



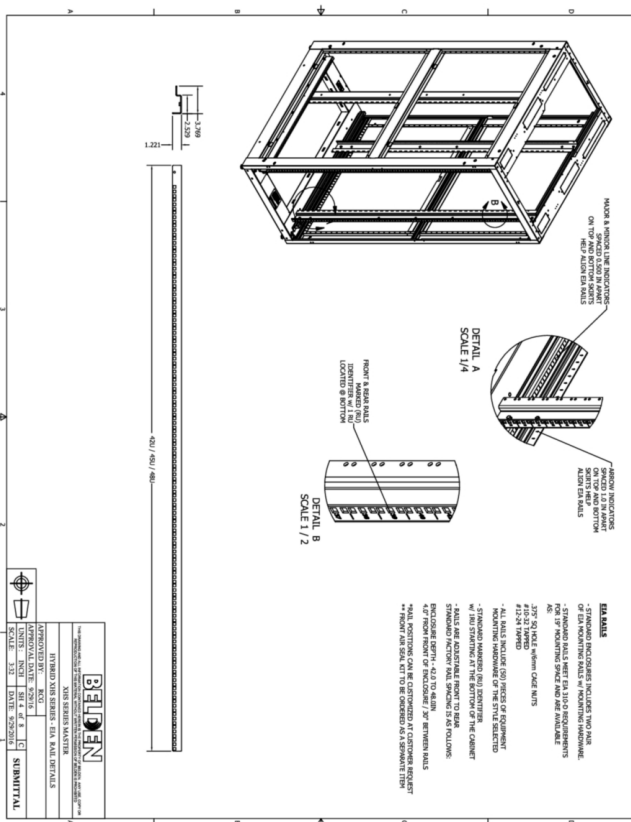
**Product:** [XHS Series EIA Mounting Rails](#)

**XHS Series EIA Mounting Rails**

**Product Description**

XHS Series EIA Mounting Rails Individual Components Ordering Options

**Technical Drawing**



**Technical Specifications**

**Application**

Product Overview:	These individual component ordering options are available as an ala carte option for customers that have existing XH Series Belden Cabinets and would like to replace an item, or want to add an additional item. These component selections are not meant to serve as an individual item selection to create a complete cabinet. If you would like to configure a cabinet for a BOM, please go to the cabinet configurator section of the online catalog that is titled "Need a custom configured product?" or do a search in the search bar for the cabinet series you are looking for to see the selection of compatible items available.
Features:	EIA Mounting rails are constructed of 12 ga, marked with RU markings starting 1U at the bottom. Rails are EIA 310 Compliant with 19" mounting as the standard. Default hardware for cage nut style rails is M6., Default front rail position is 3.0" from cabinet face and 24" between rails for 30" and 36" deep, 30" between rails for 42" and 48" deep cabinets
Environmental Space:	Indoor

**Mechanical Characteristics**

Mounting:	Vertical
-----------	----------

## Environmental and Overall Characteristics

Finish:	Medium Texture Black Powder coat finish
Material:	Steel
Color:	Black

## Related Part Numbers

Packaging:	If ordered with a cabinet, EIA rails will be installed. If ordered separately, product will be packaged and shipped.
------------	--

## Variants

Cabinet Frame Height	Cabinet Frame Width	Rail Tapping	Ordering Part #
42U	30.0 in	10-32	HS423042RLS1032
42U	30.0 in	10-32	HS423048RLS1032
45U	30.0 in	10-32	HS453042RLS1032
45U	30.0 in	10-32	HS453048RLS1032
48U	30.0 in	10-32	HS483042RLS1032
48U	30.0 in	10-32	HS483048RLS1032
42U	30.0 in	12-24	HS423042RLS1224
42U	30.0 in	12-24	HS423048RLS1224
45U	30.0 in	12-24	HS453042RLS1224
45U	30.0 in	12-24	HS453048RLS1224
48U	30.0 in	12-24	HS483042RLS1224
48U	30.0 in	12-24	HS483048RLS1224
42U	30.0 in	M6	HS423042RLSCN6
42U	30.0 in	M6	HS423048RLSCN6
45U	30.0 in	M6	HS453042RLSCN6
45U	30.0 in	M6	HS453048RLSCN6
48U	30.0 in	M6	HS483042RLSCN6
48U	30.0 in	M6	HS483048RLSCN6
42U	40.0 in	10-32	HS424042RLS1032
42U	40.0 in	10-32	HS424048RLS1032
45U	40.0 in	10-32	HS454042RLS1032
45U	40.0 in	10-32	HS454048RLS1032
48U	40.0 in	10-32	HS484042RLS1032
48U	40.0 in	10-32	HS484048RLS1032
42U	40.0 in	12-24	HS424042RLS1224
42U	40.0 in	12-24	HS424048RLS1224
45U	40.0 in	12-24	HS454042RLS1224
45U	40.0 in	12-24	HS454048RLS1224
48U	40.0 in	12-24	HS484042RLS1224
48U	40.0 in	12-24	HS484048RLS1224
42U	40.0 in	M6	HS424042RLSCN6
42U	40.0 in	M6	HS424048RLSCN6
45U	40.0 in	M6	HS454042RLSCN6
45U	40.0 in	M6	HS454048RLSCN6
48U	40.0 in	M6	HS484042RLSCN6
48U	40.0 in	M6	HS484048RLSCN6

Update and Revision:	Revision Number: 0.45 Revision Date: 11-09-2022
----------------------	---

© 2024 Belden, Inc

All Rights Reserved.

Although Belden makes every reasonable effort to ensure their accuracy at the time of this publication, information and specifications described here in are subject to error or omission and to change without notice, and the listing of such information and specifications does not ensure product availability.

Belden provides the information and specifications herein on an "ASIS" basis, with no representations or warranties, whether express, statutory or implied. In no event will Belden be liable for any damages (including consequential, indirect, incidental, special, punitive, or exemplary damages) whatsoever, even if Belden has been advised of the possibility of such damages, whether in an action under contract, negligence or any other theory, arising out of or in connection with the use, or inability to use, the information or specifications described herein.

All sales of Belden products are subject to Belden's standard terms and conditions of sale.

Belden believes this product to be in compliance with all applicable environmental programs as listed in the data sheet. The information provided is correct to the best of Belden's knowledge, information and belief at the date of its publication. This information is designed only as a general guide for the safe handling, storage, and any other operation of the product itself or the one that it becomes a part of. The Product Disclosure is not to be considered a warranty or quality specification. Regulatory information is for guidance purposes only. Product users are responsible for determining the applicability of legislation and regulations based on their individual usage of the product.