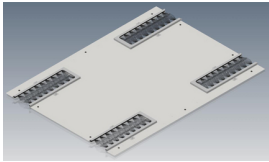




Product: [XHM Solid Top Panel W/Brushed Openings](#) 

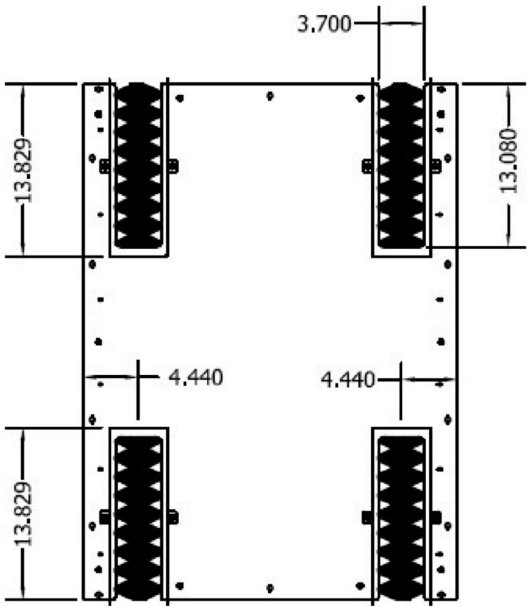


XHM Solid Top Panel W/Brushed Openings

Product Description

XHM Solid Top Panel W/Brushed Openings

Technical Drawing



Technical Specifications

Application

Product Overview:	These individual component ordering options are available as an ala carte option for customers that have existing XH Series Belden Cabinets and would like to replace an item, or want to add an additional item. These component selections are not meant to serve as an individual item selection to create a complete cabinet. If you would like to configure a cabinet for a BOM, please go to the cabinet configurator section of the online catalog that is titled "Need a custom configured product?" or do a search in the search bar for the cabinet series you are looking for to see the selection of compatible items available.
Environmental Space:	Indoor

Construction and Dimensions

Construction:	Steel
---------------	-------

Environmental and Overall Characteristics

Finish:	Medium Texture Powder Coat
Material:	Steel

Related Part Numbers

Packaging:	If ordered with a cabinet, Top Panel will be installed. If ordered separately, product will be packaged and shipped.
------------	--

Variants

Cabinet Frame Width	Cabinet Frame Depth	Panel Color	Ordering Part #
24.0 in	30.0 in	Black	HM2430TP201
24.0 in	36.0 in	Black	HM2436TP201
24.0 in	42.0 in	Black	HM2442TP201
24.0 in	48.0 in	Black	HM2448TP201
30.0 in	30.0 in	Black	HM3030TP201
30.0 in	36.0 in	Black	HM3036TP201
30.0 in	42.0 in	Black	HM3042TP201
30.0 in	48.0 in	Black	HM3048TP201
24.0 in	30.0 in	White	HM2430TP202
24.0 in	36.0 in	White	HM2436TP202
24.0 in	42.0 in	White	HM2442TP202
24.0 in	48.0 in	White	HM2448TP202
30.0 in	30.0 in	White	HM3030TP202
30.0 in	36.0 in	White	HM3036TP202
30.0 in	42.0 in	White	HM3042TP202
30.0 in	48.0 in	White	HM3048TP202

Update and Revision:	Revision Number: 0.47 Revision Date: 11-09-2022
----------------------	---

© 2025 Belden, Inc
 All Rights Reserved.

Although Belden makes every reasonable effort to ensure their accuracy at the time of this publication, information and specifications described here in are subject to error or omission and to change without notice, and the listing of such information and specifications does not ensure product availability.

Belden provides the information and specifications herein on an "ASIS" basis, with no representations or warranties, whether express, statutory or implied. In no event will Belden be liable for any damages (including consequential, indirect, incidental, special, punitive, or exemplary damages) whatsoever, even if Belden has been advised of the possibility of such damages, whether in an action under contract, negligence or any other theory, arising out of or in connection with the use, or inability to use, the information or specifications described herein.

All sales of Belden products are subject to Belden's standard terms and conditions of sale.

Belden believes this product to be in compliance with all applicable environmental programs as listed in the data sheet. The information provided is correct to the best of Belden's knowledge, information and belief at the date of its publication. This information is designed only as a general guide for the safe handling, storage, and any other operation of the product itself or the one that it becomes a part of. The Product Disclosure is not to be considered a warranty or quality specification. Regulatory information is for guidance purposes only. Product users are responsible for determining the applicability of legislation and regulations based on their individual usage of the product.