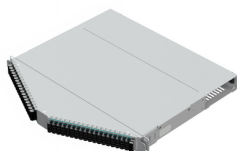


Product: [XHD1AUW076T4AA](#) 



XHD 1U ANGLED PATCH PANEL 76P PRE-TERM OM4 (WHITE)

Product Description

XHD 1U ANGLED PATCH PANEL 76P 1 TRAY PRE-TERM BASE-12 OM4 AQUA, TYPE-A, WHITE FINISH (BLACK LC ADAPTERS)

Technical Specifications

Product Overview

Environmental Space:	Indoor
Suitable Applications:	FiberExpress Solutions, Backbone, Telecommunications Room, Main Distribution Room, Data Centers

Material

Fiber Cable Construction

Fiber Type	Fiber Count
OM4	12

Weight:	7.6 lbs
Overall Height:	1.72 in
Overall Width:	19 in
Overall Length:	18.3 in

Physical Specifications

Max Capacity:	144 Terminations (LC), 8 Terminations (SN)
---------------	--

Mechanical Characteristics

Termination Type:	Front Sliding Drawer
-------------------	----------------------

Temperature Range

Operating Temperature Range:	-10°C To +60°C
Storage Temperature Range:	-40°C To +70°C

Product Material

Materials

Description	Material	Color	Type
Patch Panel	Aluminum		
Cable Tray Assy	Steel/Aluminum		
Rear Connector Body	Plastic - UL94V-0	Aqua	MPO Female (Max IL: 0.20 dB) (Min RL: -25 dB)
Adapter Sleeve	Zirconia-Ceramic		
Front Connector Body	Plastic - UL94V-0	Aqua	LC Duplex (Max IL: 0.15 dB) (Min RL: -25 dB) - SN Duplex

Transmission-Characteristics

Polarity Identification:	Type-A
--------------------------	--------

Standards

EU Directive 2011/65/EU (RoHS 2):	Yes
MII Order #39 (China RoHS):	EUP 50

Related Part Numbers

Included Parts:	Screws (12-24), Screws (10-32), Velcro Cable Tie, Installation Guide
-----------------	--

Product Notes

Packaging:	Individually packaged in a cardboard box.
Notes:	For more information, please refer to our web site at http://www.belden.com .

History

Update and Revision:	Revision Number: 0.19 Revision Date: 05-05-2026
----------------------	---

© 2026 Belden, Inc

All Rights Reserved.

Although Belden makes every reasonable effort to ensure their accuracy at the time of this publication, information and specifications described here in are subject to error or omission and to change without notice, and the listing of such information and specifications does not ensure product availability.

Belden provides the information and specifications herein on an "ASIS" basis, with no representations or warranties, whether express, statutory or implied. In no event will Belden be liable for any damages (including consequential, indirect, incidental, special, punitive, or exemplary damages) whatsoever, even if Belden has been advised of the possibility of such damages, whether in an action under contract, negligence or any other theory, arising out of or in connection with the use, or inability to use, the information or specifications described herein.

All sales of Belden products are subject to Belden's standard terms and conditions of sale.

Belden believes this product to be in compliance with all applicable environmental programs as listed in the data sheet. The information provided is correct to the best of Belden's knowledge, information and belief at the date of its publication. This information is designed only as a general guide for the safe handling, storage, and any other operation of the product itself or the one that it becomes a part of. The Product Disclosure is not to be considered a warranty or quality specification. Regulatory information is for guidance purposes only. Product users are responsible for determining the applicability of legislation and regulations based on their individual usage of the product.