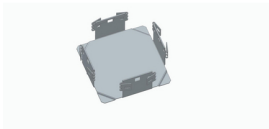




Product: [WireMesh Tray Cross-Section](#)

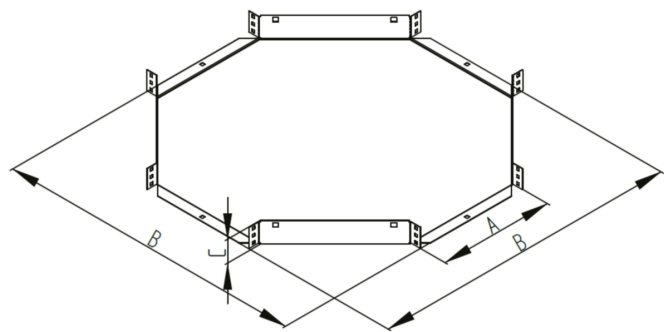


CWT-CROSS-xx - Series

Product Description

WireMesh Tray Cross-section

Technical Drawing



Technical Specifications

Application

Environmental Space:	Indoor
----------------------	--------

Mechanical Characteristics

Mechanical Characteristics Note:	For assembling to Wire Mesh Tray, Screw & Bolt Set CWT-S-xx can be used
----------------------------------	---

Environmental and Overall Characteristics

Finish:	Galvanized
Material:	Steel
Color:	Metal

Related Part Numbers

Variants

Part #	[A] Tray Width	[B]	[C]
CWT-CROSS-05	50 mm	165 mm	50 mm
CWT-CROSS-10	100 mm	290 mm	50 mm
CWT-CROSS-20	200 mm	535 mm	50 mm
CWT-CROSS-30	300 mm	775 mm	50 mm

Update and Revision:	Revision Number: 0.98 Revision Date: 01-15-2025
----------------------	---

Belden believes this product to be in compliance with all applicable environmental programs as listed in the data sheet. The information provided is correct to the best of Belden's knowledge, information and belief at the date of its publication. This information is designed only as a general guide for the safe handling, storage, and any other operation of the product itself or the one that it becomes a part of. The Product Disclosure is not to be considered a warranty or quality specification. Regulatory information is for guidance purposes only. Product users are responsible for determining the applicability of legislation and regulations based on their individual usage of the product.