



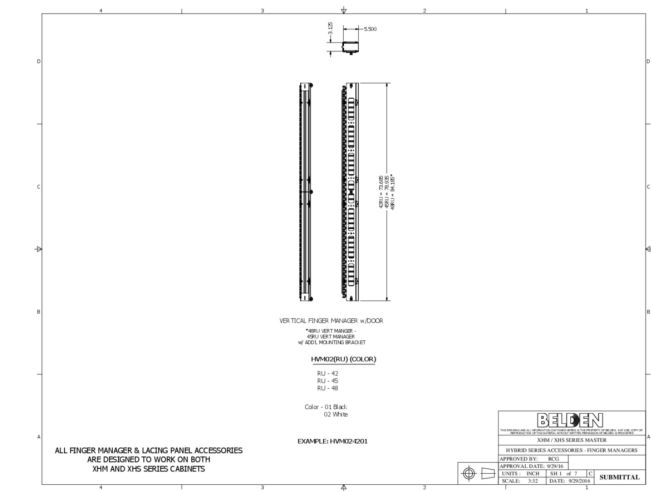
Product: [Vertical Mgr Finger Style with Door](#)

Finger Style Manager with Cover

Product Description

Belden Cabinet Line Finger Style Vertical Managers with Cover

Technical Drawing



Technical Specifications

Application

Product Overview:	Mounts on rail struts for depth adjustability Compatible with 30"W cabinets Can be used in cabinet front and rear Includes doors to hide cables and provide an organized look Vertical manager can be oriented two different ways to optimize cabling
Features:	4" wide x 6" deep for 24 sq. in. of cross-sectional area, For medium- and high-density applications, Management fingers align with mounting rail RU, Finger allows for cable support and bend radius control, Oblong opening allows cable routing into the manager
Environmental Space:	Indoor

Construction and Dimensions

Width:	4.0 in
Depth:	6.0 in

Mechanical Characteristics

Mounting:	Vertical
-----------	----------

Environmental and Overall Characteristics

Material:	Steel and molded plastic fingers
-----------	----------------------------------

Related Part Numbers

Variants

Item Part #	Description	Color	Depth	Width
HVM024201	Finger Style Manager with Cover, 42U	Black	6.0 in	4.0 in

HVM024202	Finger Style Manager with Cover, 42U	White	6.0 in	4.0 in
HVM024501	Finger Style Manager with Cover, 45U	Black	6.0 in	4.0 in
HVM024502	Finger Style Manager with Cover, 45U	White	6.0 in	4.0 in
HVM024801	Finger Style Manager with Cover, 48U	Black	6.0 in	4.0 in
HVM024802	Finger Style Manager with Cover, 48U	White	6.0 in	4.0 in

Update and Revision:	Revision Number: 0.22 Revision Date: 04-08-2022
----------------------	---

© 2024 Belden, Inc

All Rights Reserved.

Although Belden makes every reasonable effort to ensure their accuracy at the time of this publication, information and specifications described here in are subject to error or omission and to change without notice, and the listing of such information and specifications does not ensure product availability.

Belden provides the information and specifications herein on an "ASIS" basis, with no representations or warranties, whether express, statutory or implied. In no event will Belden be liable for any damages (including consequential, indirect, incidental, special, punitive, or exemplary damages) whatsoever, even if Belden has been advised of the possibility of such damages, whether in an action under contract, negligence or any other theory, arising out of or in connection with the use, or inability to use, the information or specifications described herein.

All sales of Belden products are subject to Belden's standard terms and conditions of sale.

Belden believes this product to be in compliance with all applicable environmental programs as listed in the data sheet. The information provided is correct to the best of Belden's knowledge, information and belief at the date of its publication. This information is designed only as a general guide for the safe handling, storage, and any other operation of the product itself or the one that it becomes a part of. The Product Disclosure is not to be considered a warranty or quality specification. Regulatory information is for guidance purposes only. Product users are responsible for determining the applicability of legislation and regulations based on their individual usage of the product.