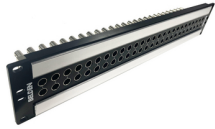




Product: [VPNSW2026](#)



2RU, 2x26 Standard WECO Video Patch Panel, 75Ohm (Self-terminating)

Product Description

2RU Height Video Patch Panel pre-installed with 2x26 standard WECO, HD-SDI, Self-terminating Patch Jacks.

Technical Specifications

Product Overview

Suitable Applications:	Mobile video news vans. Analog video. TV station. Multimedia video system, control room etc.
------------------------	--

Connectors

Materials

Description	Material
Jack Description	75Ohm High Frequency Dual Coaxial, Self-terminating WECO Patch Jack
Front Jack Receptacle	WECO Receptacle
Rear Jack Receptacle	BNC Receptacle
Panel Components	Components of the panel including Jack, housing, PVC article, label paper

Construction and Dimensions

Max Capacity:	26 Jacks (52 Holes)
---------------	---------------------

Electrical Characteristics

Electrical Characteristics Notes:	Return Loss: Better than -15dB, DC up to 2.4GHz in Normal-through mode, Better than -10dB, DC up to 3.5GHz in Normal-through mode; Nom. Impedance: 75 Ohms; Electrical bandwidth: DC~3.5GHz; Terminated version: Self-terminating (inserting a plug into source side automatically terminates the load side. Insertion into the local side automatically terminates the source side. Either provides a resistive load to the unused side.
-----------------------------------	---

Temperature Range

Operating Temperature Range:	-20°C To +80°C
------------------------------	----------------

Standards

Other Standards:	SMPTE 424M
------------------	------------

Applicable Environmental and Other Programs

EU Directive 2011/65/EU (RoHS 2):	Yes
-----------------------------------	-----

Suitability

Suitability - Indoor:	Yes
-----------------------	-----

Related Part Numbers

Related Parts:	RG59 coaxial cable terminated with WECO plug
----------------	--

History

Update and Revision:	Revision Number: 0.8 Revision Date: 12-24-2024
----------------------	--

© 2025 Belden, Inc

All Rights Reserved.

Although Belden makes every reasonable effort to ensure their accuracy at the time of this publication, information and specifications described here in are subject to error or omission and to change without notice, and the listing of such information and specifications does not ensure product availability.

Belden provides the information and specifications herein on an "ASIS" basis, with no representations or warranties, whether express, statutory or implied. In no event will Belden be liable for any damages (including consequential, indirect, incidental, special, punitive, or exemplary damages) whatsoever, even if Belden has been advised of the possibility of such damages, whether in an action under contract, negligence or any other theory, arising out of or in connection with the use, or inability to use, the information or specifications described herein.

All sales of Belden products are subject to Belden's standard terms and conditions of sale.

Belden believes this product to be in compliance with all applicable environmental programs as listed in the data sheet. The information provided is correct to the best of Belden's knowledge, information and belief at the date of its publication. This information is designed only as a general guide for the safe handling, storage, and any other operation of the product itself or the one that it becomes a part of. The Product Disclosure is not to be considered a warranty or quality specification. Regulatory information is for guidance purposes only. Product users are responsible for determining the applicability of legislation and regulations based on their individual usage of the product.