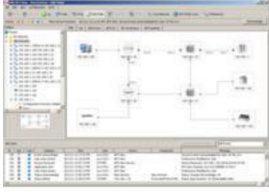


Product: [Upgrade AFS View 25 Nodes](#)



Upgrade of network management software for monitoring of industrial networks with up to 25 nodes

Product Description

no longer available Upgrade of network management software for monitoring of industrial networks with up to 25 nodes (IP addresses). Valid to upgrade v4.x to the current version.

Technical Specifications

Product description

Type:	Upgrade AFS View 25 Nodes
Part Number:	1KHW027848R0025
Version + Nodes:	Upgrade version - 25 nodes
Node extension:	To increase the amount of supervised nodes, licenses can be combined.
License:	License enables supervision of up to 25 nodes (IP addresses).

Configuration features

Configuration functions:	Individual device configuration. Configuration of multiple devices simultaneously. Configuration of identical parameters across multiple device types simultaneously. Firmware update of multiple devices.
--------------------------	--

Diagnostics features

Alarm and event actions:	Alarm and event logging. Alarm actions such as message window, email, Push notifications, SMS and start executable. Event forwarding to Syslog server. Audible alarm.
Event generation:	polling and SNMPv1 trap support
Modules and components:	AFS660, AFS665, AFS670 V2.0, AFF660, AFF665, AFS650, AFS655, AFS670, AFS675, AFS677, AFR677, AFF650, Meinberg LANTIME GPS, Meinberg LANTIME M300, Meinberg LANTIME M600, Epson FX-2190, Epson AcuLaser C1100N, any third-party SNMP capable device, any ICMP(Ping) capable device.
Monitoring:	Graphical status representation for devices, links, power supplies, fans, and any other device sub-component. Status displays for third-party products. All statuses are configurable. Supports multiple topology windows and a network hierarchy view. User configurable event log. Customisable event actions. Reporting tool. Project setup wizard. Hierarchical supervision structure. Task scheduler.
Topology recognition:	Topology recognition is based on LLDP (Link Layer Discovery Protocol, IEEE802.1AB) and Learned Address Tables. Switches, routers, WLAN devices, unmanaged switches/hubs, and end devices are supported. Can also map networks behind a router. Path Availability Calculation.

Software

Operating system:	Windows 7 (64 Bit), Windows 8.1 (64 Bit), Windows 10 Version 1803 (64 Bit); Windows Server 2008 R2, Windows Server 2012 R2, Windows Server 2016, Windows Server 2019; PC Linux:64 Bit: Kernel 3.10, libc 6 (approved for Debian and Red Hat); Debian 8/9/10, Red Hat 7/8
Browser:	Internet Explorer 4.0 or higher, Java runtime environment 1.5.0 is also installed

Hardware

Processor:	x86 compatible CPU, min. 1 GHz
Hard disk space:	2 GB free
RAM:	1 GB, 2 GB recommended
Network:	Ethernet network with TCP/IP protocol stack. Supports multiple network cards.

SCADA /Process visualisation

ActiveX Control:	Graphical User Interface can be reused inside SCADA systems via an ActiveX control
OPC Server:	Map device and connection states as well as device properties. Can be used inside SCADA systems via the OPC Data Access 2.0/3.0 interface.

IIT.Protocols

Supported protocols:	AFS Finder, ICMP (Ping), SNMPv1, SNMPv3, OPC DA 2.0/3.0
----------------------	---

Language Support

Manual and help texts:	Chinese, English, French, German, Italian, Spanish
Menus and dialogs:	Chinese, English, French, German, Greek, Indonesian, Italian, Japanese, Korean, Portuguese, Russian, Spanish

Scope of delivery and accessories

Modules and components:	AFS660, AFS665, AFS670 V2.0, AFF660, AFF665, AFS650, AFS655, AFS670, AFS675, AFS677, AFR677, AFF650, Meinberg LANTIME GPS, Meinberg LANTIME M300, Meinberg LANTIME M600, Epson FX-2190, Epson AcuLaser C1100N, any third-party SNMP capable device, any ICMP(Ping) capable device.
-------------------------	--

Further Instructions

Variants

Part Number	Type
942 071-025	Upgrade AFS View 25 Nodes

© 2023 Belden, Inc

All Rights Reserved.

Although Belden makes every reasonable effort to ensure their accuracy at the time of this publication, information and specifications described here in are subject to error or omission and to change without notice, and the listing of such information and specifications does not ensure product availability.

Belden provides the information and specifications herein on an "ASIS" basis, with no representations or warranties, whether express, statutory or implied. In no event will Belden be liable for any damages (including consequential, indirect, incidental, special, punitive, or exemplary damages) whatsoever, even if Belden has been advised of the possibility of such damages, whether in an action under contract, negligence or any other theory, arising out of or in connection with the use, or inability to use, the information or specifications described herein.

All sales of Belden products are subject to Belden's standard terms and conditions of sale.

Belden believes this product to be in compliance with all applicable environmental programs as listed in the data sheet. The information provided is correct to the best of Belden's knowledge, information and belief at the date of its publication. This information is designed only as a general guide for the safe handling, storage, and any other operation of the product itself or the one that it becomes a part of. The Product Disclosure is not to be considered a warranty or quality specification. Regulatory information is for guidance purposes only. Product users are responsible for determining the applicability of legislation and regulations based on their individual usage of the product.