



Product: [Universal Style Cable Runway](#)

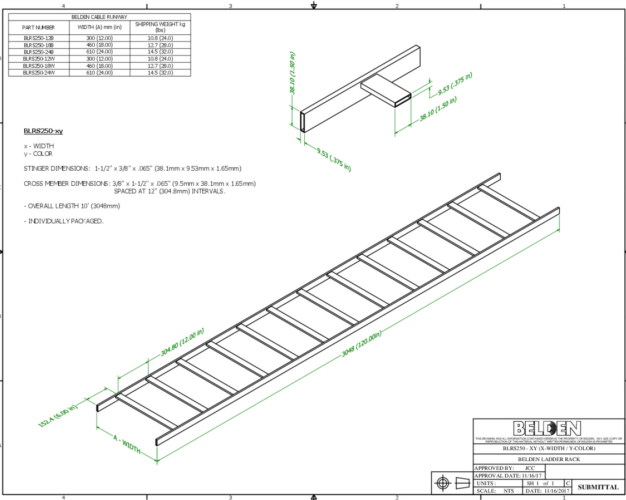
Universal Style Cable Runway



Product Description

Universal Style Cable Runway

Technical Drawing



Technical Specifications

Application

Product Overview:	Maximum load capacity when supported every 5' with minimal deflection is 132 lb/ft. Welded steel tubing construction.
Features:	Overall length - 10', side stringer = 1.5" x .375" x .065", cross member = 1.5" x .375" x .065" welded at 12" intervals
Environmental Space:	Indoor

Environmental and Overall Characteristics

Finish:	Powdercoat Finish
Material:	Steel

Related Part Numbers

Packaging:	Individually Boxed
------------	--------------------

Variants

Part #	Description	Color	Lead time	Shipping Weight
BLRS250-12B	Universal-Style 250 cable runway/UL Classified - 12"W x 10'L	Black	Black lead time (14 day ARO)	24 lb
BLRS250-18B	Universal-Style 250 cable runway/UL Classified - 18"W x 10'L	Black	Black lead time (14 day ARO)	28 lb
BLRS250-24B	Universal-Style 250 cable runway/UL Classified - 24"W x 10'L	Black	Black lead time (14 day ARO)	32 lb
BLRS250-12W	Universal-Style 250 cable runway/UL Classified - 12"W x 10'L	White	White extended lead time will be (6-8 weeks ARO)	24 lb

BLRS250-18W	Universal-Style 250 cable runway/UL Classified - 18"W x 10"L	White	White extended lead time will be (6-8 weeks ARO)	28 lb
BLRS250-24W	Universal-Style 250 cable runway/UL Classified - 24"W x 10"L	White	White extended lead time will be (6-8 weeks ARO)	32 lb
Update and Revision:		Revision Number: 0.155 Revision Date: 02-03-2025		

© 2025 Belden, Inc
All Rights Reserved.

Although Belden makes every reasonable effort to ensure their accuracy at the time of this publication, information and specifications described here in are subject to error or omission and to change without notice, and the listing of such information and specifications does not ensure product availability.

Belden provides the information and specifications herein on an "ASIS" basis, with no representations or warranties, whether express, statutory or implied. In no event will Belden be liable for any damages (including consequential, indirect, incidental, special, punitive, or exemplary damages) whatsoever, even if Belden has been advised of the possibility of such damages, whether in an action under contract, negligence or any other theory, arising out of or in connection with the use, or inability to use, the information or specifications described herein.

All sales of Belden products are subject to Belden's standard terms and conditions of sale.

Belden believes this product to be in compliance with all applicable environmental programs as listed in the data sheet. The information provided is correct to the best of Belden's knowledge, information and belief at the date of its publication. This information is designed only as a general guide for the safe handling, storage, and any other operation of the product itself or the one that it becomes a part of. The Product Disclosure is not to be considered a warranty or quality specification. Regulatory information is for guidance purposes only. Product users are responsible for determining the applicability of legislation and regulations based on their individual usage of the product.