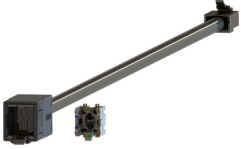


Part Number: REVConnect CAT6+ Flex Plug



REVConnect CAT6+ Flex Plug, Single Packaging (incl. 1 core), Bonded-Pair, 4 Pair, 23 AWG Solid, T568A/B-T568A/B

Product Description

REVConnect CAT6+ Flex Plug, Single Packaging (incl. 1 core), Bonded-Pair, 4 Pair, 23 AWG Solid, T568A/B-T568A/B

Technical Specifications

Product Overview

Suitable Applications:	IBDN System 4800, IBDN System 3600, IBDN System 2400, TIA Category 6, ISO Class E, 1000BASE-T
Suitable Applications:	IBDN System 4800, IBDN System 3600, IBDN System 2400, TIA Category 6, ISO Class E, 1000BASE-T

Physical Characteristics (Overall)

Conductor

AWG	Stranding	Material	No. of Pairs
23	Solid	Bare Copper	4

Conductor

AWG	Stranding	Material	No. of Pairs
23	Solid	Bare Copper	4

Insulation

Material
PO - Polyolefin

Insulation

Material
PO - Polyolefin

Outer Jacket Material

Material
PVC - Polyvinyl Chloride

Outer Jacket Material

Material
PVC - Polyvinyl Chloride

Overall Nominal Diameter:	0.23 in.
Overall Nominal Diameter:	0.23 in.
Wiring Scheme:	T568A/B-T568A/B
Wiring Scheme:	T568A/B-T568A/B
Packaging:	Individually packaged in a clear plastic bag.
Packaging:	Individually packaged in a clear plastic bag.
Weight:	0.060 lbs
Weight:	0.060 lbs

Connectors

Materials

Description	Material	Type
Cable End 1, Plug	Polycarbonate	RJ45
Cable End 1, Connection	Phosphor Bronze with 50u inch Gold over Nickel Plating	RJ45 Blades
Cable End 2, Connection	50uin Gold plated contacts	REVConnect

Materials

Description	Material	Type
Cable End 1, Plug	Polycarbonate	RJ45
Cable End 1, Connection	Phosphor Bronze with 50u inch Gold over Nickel Plating	RJ45 Blades
Cable End 2, Connection	50uin Gold plated contacts	REVConnect

Electrical Characteristics

Dielectric Strength:	1,000 V RMS @ 60 Hz
Dielectric Strength:	1,000 V RMS @ 60 Hz
Current Rating:	1.500 A
Current Rating:	1.500 A
Insulation Resistance:	500 M-Ohm Minimum
Insulation Resistance:	500 M-Ohm Minimum
Max Contact Resistance:	20 mOhm
Max Contact Resistance:	20 mOhm

High Freq

Frequency [MHz]	Min. NEXT [dB]	Min. RL (Return Loss) [dB]
1 MHz	65 dB	19.8 dB
4 MHz	65 dB	21.6 dB
8 MHz	65 dB	22.5 dB
10 MHz	65 dB	22.8 dB
16 MHz	62.6 dB	23.4 dB
20 MHz	60.7 dB	23.7 dB
25 MHz	58.8 dB	24 dB
31.25 MHz	56.9 dB	23 dB
62.5 MHz	51 dB	20 dB
100 MHz	47 dB	18 dB
200 MHz	41.1 dB	15 dB
250 MHz	39.3 dB	14 dB
300 MHz	37 dB	12.8 dB
400 MHz	33.6 dB	10.9 dB
500 MHz	31 dB	9.5 dB
625 MHz	28.3 dB	8 dB

High Freq

Frequency [MHz]	Min. NEXT [dB]	Min. RL (Return Loss) [dB]
1 MHz	65 dB	19.8 dB
4 MHz	65 dB	21.6 dB
8 MHz	65 dB	22.5 dB
10 MHz	65 dB	22.8 dB
16 MHz	62.6 dB	23.4 dB
20 MHz	60.7 dB	23.7 dB
25 MHz	58.8 dB	24 dB
31.25 MHz	56.9 dB	23 dB
62.5 MHz	51 dB	20 dB
100 MHz	47 dB	18 dB
200 MHz	41.1 dB	15 dB
250 MHz	39.3 dB	14 dB
300 MHz	37 dB	12.8 dB
400 MHz	33.6 dB	10.9 dB
500 MHz	31 dB	9.5 dB
625 MHz	28.3 dB	8 dB

Temperature Range

Installation Temp Range:	-10°C To +60°C
--------------------------	----------------

Installation Temp Range:	-10°C To +60°C
Storage Temp Range:	-40°C To +70°C
Storage Temp Range:	-40°C To +70°C
Operating Temp Range:	-10°C To +60°C
Operating Temp Range:	-10°C To +60°C

Mechanical Characteristics

Min Bend Radius (Overall Cable):	1.040 in.
Min Bend Radius (Overall Cable):	1.040 in.
Plug /Jack Compatibility:	RJ45, REVConnect Core
Plug /Jack Compatibility:	RJ45, REVConnect Core

Termination Interface

Termination	Connection	Durabilities
Cable End 1 - RJ46	Mated Connection	750 Cycles
Cable End 2 - RevConnect	Mated Connection	20 Cycles

Termination Interface

Termination	Connection	Durabilities
Cable End 1 - RJ46	Mated Connection	750 Cycles
Cable End 2 - RevConnect	Mated Connection	20 Cycles

Standards

UL Rating:	UL94 V-0, UL1863, UL2043
UL Rating:	UL94 V-0, UL1863, UL2043
Telecommunications Standards:	Category 6 - TIA 568.C.2, ISO/IEC 11801:2002 Ed.2
Telecommunications Standards:	Category 6 - TIA 568.C.2, ISO/IEC 11801:2002 Ed.2
IEEE Specification:	Power Over Ethernet (PoE) IEEE 802.3at type 1 and 2 (up to 30W), IEEE802.3bt/D1.7 type 3 and 4 (up to 100W), CISCO UPOE (up to 60W), Power over HDBaseTTM (up to 100W)
IEEE Specification:	Power Over Ethernet (PoE) IEEE 802.3at type 1 and 2 (up to 30W), IEEE802.3bt/D1.7 type 3 and 4 (up to 100W), CISCO UPOE (up to 60W), Power over HDBaseTTM (up to 100W)
Other Specification:	IEC 60603-7, FCC PART 68, SUB PART F
Other Specification:	IEC 60603-7, FCC PART 68, SUB PART F
Other Standards:	FCC Part 68, Subpart F, IEC 60603-7
Other Standards:	FCC Part 68, Subpart F, IEC 60603-7

Applicable Environmental and Other Programs

EU Directive 2002/95/EC (RoHS):	Yes
EU Directive 2002/95/EC (RoHS):	Yes
EU RoHS Compliance Date (yyyy-mm-dd):	2006-07-01
EU RoHS Compliance Date (yyyy-mm-dd):	2006-07-01
MII Order #39 (China RoHS):	EUP 50
MII Order #39 (China RoHS):	EUP 50

Suitability

Suitability - Indoor:	Yes
Suitability - Indoor:	Yes

Flammability, LS0H, Toxicity Testing

Safety Listing:	c(UL)us Listed
Safety Listing:	c(UL)us Listed

Part Number

Related Parts:	REVConnect
Related Parts:	REVConnect

Variants

Item #	Color
RV6FFPUBK18-S1	Black
RV6FFPUEW18-S1	Electric White

Variants

Item #	Color
RV6FFPUBK18-S1	Black
RV6FFPUEW18-S1	Electric White

© 2019 Belden, Inc

All Rights Reserved.

Although Belden makes every reasonable effort to ensure their accuracy at the time of this publication, information and specifications described here in are subject to error or omission and to change without notice, and the listing of such information and specifications does not ensure product availability.

Belden provides the information and specifications herein on an "ASIS" basis, with no representations or warranties, whether express, statutory or implied. In no event will Belden be liable for any damages (including consequential, indirect, incidental, special, punitive, or exemplary damages) whatsoever, even if Belden has been advised of the possibility of such damages, whether in an action under contract, negligence or any other theory, arising out of or in connection with the use, or inability to use, the information or specifications described herein.

All sales of Belden products are subject to Belden's standard terms and conditions of sale.

Belden believes this product to be in compliance with all applicable environmental programs as listed in the data sheet. The information provided is correct to the best of Belden's knowledge, information and belief at the date of its publication. This information is designed only as a general guide for the safe handling, storage, and any other operation of the product itself or the one that it becomes a part of. The Product Disclosure is not to be considered a warranty or quality specification. Regulatory information is for guidance purposes only. Product users are responsible for determining the applicability of legislation and regulations based on their individual usage of the product.