



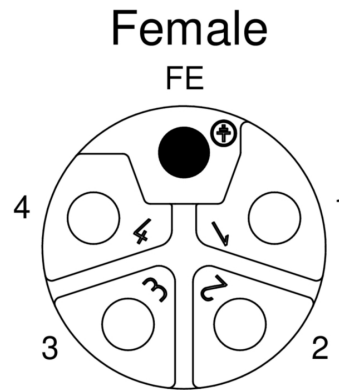
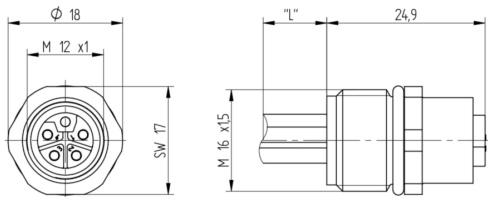
Product: [RKF6S 5L-033](#)

M12 Power | Receptacle | Female Front Mount → Open End, 5-pin L-code, (1.50 mm²) 16 AWG, 63 V / 16 A

Product Description

M12 Power | Receptacle | M12 Female Front Mount, #Contacts: 5 (4+FE), l-code → Open End | Hookup Wire(s): mPPE; 1.50 mm² (16 AWG) | 63 V / 16 A

Technical Drawing



Technical Specifications

Face View

Pin 1	Pin 2	Pin 3	Pin 4	FE
brown	white	blue	black	pink

Technical Data

Product Family:	Power Connector
Side 1 Product Sub Family:	M12 Power
Brand:	Lumberg Automation
Connector Type:	Receptacle
Side 1 Type of Contact/Gender:	Socket Contact / Female
Connector Design:	Receptacle M12 Female Front Mount
Number of Pins:	5 (4+FE)
Coding, Side 1:	L
Shielding Type:	Shielded
Attachment Type:	Coupling Nut
Voltage Rating:	63 V
Rated Voltage (UL):	63 V
Rated Impulse Voltage:	1.5 kV
Operating Voltage:	60 V AC/DC
Current Rating:	16 A
Rated Current (UL)*:	16 A

Side 1 Contact Resistance:	≤ 10 mOhm
Insulation Resistance:	> 10 ⁹ Ohm
Mating Cycles:	≤ 100
Ambient Temperature (Operation)*:	-40 °C to +125 °C, notice derating
Protection Degree / IP Rating**:	IP65, IP67, IP69K
Side 1 Design Standard:	IEC 61076-2-111
Side 1 Pollution Degree:	3 acc. to IEC 60664-1
Clearance / Creepage Distance:	IEC 60664-1 (2020-05)
Overvoltage Category:	III acc. to IEC 60664-1

Materials

Contact Base Material:	Copper Alloy (CuNi)
Side 1 Contact Plating:	Gold over Copper (Cu/Au)
Contact Bearer Material:	Glass-filled Polybutylene Terephthalate (PBT GF)
Contact Bearer Color:	Grey
Flammability Class (Contact Bearer):	UL 94 V-2
Housing Material:	Copper Alloy (CuZn)
Housing Plating:	Nickel (Ni)
Housing Color:	Silver
Attachment Material:	Copper Alloy (CuZn)
Attachment Plating:	Nickel (Ni)
Shielding Material:	CuZn, plating: Ni
O-Ring Material:	Fluoroelastomer (FKM)
Gasket Material:	Fluoroelastomer (FKM) Panel Gasket, Included with packaging

Additional Technical Data

Mount Type:	M16x1,5
Accessories to Order Separately:	Panel Nut: ID: 25049 Name: RSKFM 16

Cable Data

Cable Number:	033
Conductor Size:	1.50 mm ²
Number of Wires:	5
Conductor Material:	Cu
Wire Insulation Material:	Modified Polyphenylene Ether (mPPE)
Insulated Wire Diameter:	Ø 2.25 mm 0.089"
UL Cable Type:	AWM Style 11028
Flammability Class (Cable Jacket):	UL 1581 VW-1

Approvals

UL-File:	E497237
UL:	UL 2237; cULus

Safety & Environmental Compliance

RoHS Compliant:	Yes
-----------------	-----

Resistances

Halogenfree:	DIN VDE 0472 T.815
Oil Resistance:	Yes

Notes

Note Derating:	* Notice derating
Protection Degree / IP Rating Note:	IP Rating tested according to IEC standard using combination of a Hirschmann or Lumberg Automation connector mounted and locked
Note:	1. Do not connect or disconnect under load.
Product Characteristics:	To ensure ingress protection, please check the O-ring's position before connecting. Improperly positioned O-ring leads to ingress protection potential failure.

Variants

Item #	Item Description	Cable Length
24452	RKF6S 5L-033/1 M	

22472	RKF6S 5L-033/2 M	
934980402	RKF6S 5L-033/0,2 M	0.2 m
934980406	RKF6S 5L-033/0,5 M	0.5 m
6X0022472	RKF6S 5L-033/2 M	2 m

© 2026 Belden, Inc

All Rights Reserved.

Although Belden makes every reasonable effort to ensure their accuracy at the time of this publication, information and specifications described here in are subject to error or omission and to change without notice, and the listing of such information and specifications does not ensure product availability.

Belden provides the information and specifications herein on an "ASIS" basis, with no representations or warranties, whether express, statutory or implied. In no event will Belden be liable for any damages (including consequential, indirect, incidental, special, punitive, or exemplary damages) whatsoever, even if Belden has been advised of the possibility of such damages, whether in an action under contract, negligence or any other theory, arising out of or in connection with the use, or inability to use, the information or specifications described herein.

All sales of Belden products are subject to Belden's standard terms and conditions of sale.

Belden believes this product to be in compliance with all applicable environmental programs as listed in the data sheet. The information provided is correct to the best of Belden's knowledge, information and belief at the date of its publication. This information is designed only as a general guide for the safe handling, storage, and any other operation of the product itself or the one that it becomes a part of. The Product Disclosure is not to be considered a warranty or quality specification. Regulatory information is for guidance purposes only. Product users are responsible for determining the applicability of legislation and regulations based on their individual usage of the product.