




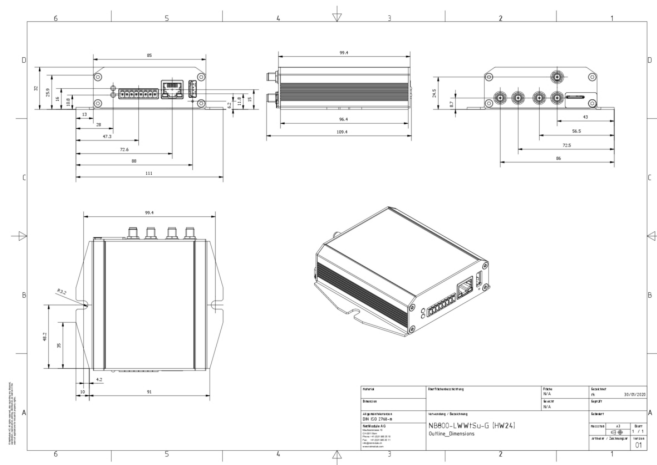
Product: [NB800-WWtScSu-G](#) 

IIoT-Router with ETH, WLAN, BT/BLE, GNSS, Serial, DI/O

Product Description

Compact Wireless Router in a small form factor for simple connectivity tasks. With: , WLAN, Bluetooth and Bluetooth Low Energy (LE), Global Positioning (GNSS, GPS), Serial Port, Digital Input/Output

Technical Drawing



Technical Specifications

Product Overview

| | |
|-------|---|
| Name: | NB800-WWtScSu-G |
| WAN: | IPv4; IPv6; IP Passthrough; DynDNS Client; PPPoE; |

Product Life Cycle

| | |
|-------------|-------------------------------|
| Life Cycle: | Active - Product is available |
|-------------|-------------------------------|

General Information

| | |
|--------------------|--|
| Scope of delivery: | Device, General safety instructions, 1x Terminal block 3.5mm |
|--------------------|--|

More Interfaces

| | |
|--|--|
| Local Management and Device Replacement: | Management via Web (HTTPs); Command Line Interface (CLI) over SSH/Serial/Web; SNMP v1/v2c/v3; Discovery via LLDP, CDP, FDP, SONMP, EDP, IRDP |
| Digital Input: | 1x Digital Input, 1x Digital Output |
| Ethernet: | 1x Fast Ethernet (100 Base-TX, Auto MDIX, 10/100 Mbps, RJ45) |
| Power Supply: | 8-pin terminal block |
| Serial: | 1x RS-232/485 combo (software switchable); Signals TX, RX / A, B; Up to 115kBit/s, 120 Ω for RS-485 configurable by software |
| GPS (global positioning system): | Multi-GNSS, Receiver BeiDou, Galileo, GLONASS, GPS/QZSS, Antennas: active or passive, Sensitivity: Down to -167 dBm, CEP (Circular Error Probability) ≤2.5m, Services: Standalone, GNSS Stream NMEA or JSON, 1x SMA female |
| I/O Connection: | On terminal block header 3.5mm |
| I/O Port Functionality: | Input Level: Low 0-3 VDC, High 9-32 VDC; Isolation 1500 VDC; Output Level: 0-32 VDC/1A |
| CPU: | 1 GHz single core |

| | |
|--------------------|---|
| Memory: | 512 MB RAM |
| Storage: | 4 GB flash |
| Signaling contact: | 1x Digital Input; Low 0-3 VDC; High 9-32 VDC; Isolation 1'500 VDC |
| LEDs: | STAT, MOB/USR, ETH Speed, ETH Activity |
| Reset Function: | Pin-hole push button for reboot and factory reset |

Radio technology

Modules

| Description | MIMO | Antenna Connector | Radio Protocol | Frequency Band | Access Point Functionality | Client / STA Functionality |
|-------------|----------|-------------------|---|-------------------|----------------------------|----------------------------|
| Module 4 | 2x2 MIMO | 2x SMA female | 802.11 a/b/g/n (Wi-Fi 4), Bluetooth 4.2, Bluetooth Low Energy (BLE) | WLAN 2.4 or 5 GHz | Yes (up to 10 clients) | Yes |

| | |
|---------------|---|
| Load Balance: | Link Prioritizatoin and Aggregation; Load Balancing; Diffserv; SFQ; HTB; Priority based Queuing |
|---------------|---|

Power requirements

| | |
|--------------------|---------------------------|
| Operating Voltage: | 12-24 VDC (±20%) |
| Power consumption: | 5 W average, 10 W maximum |

Diagnostics features

| | |
|--------------------------|---|
| Alarm and event actions: | Email; SMS |
| Monitoring: | Watchdogs (Hard- and Software); Link Supervision; MQTT Broker |

Security features

| | |
|-----------------|---|
| Multipoint VPN: | VXLAN, CSD dial-in, OpenVPN, IPSec, GRE, L2TP, PPTP, IKEv1/v2 |
|-----------------|---|

Service

| | |
|-----------------|------------|
| Other services: | DNS Cache; |
|-----------------|------------|

Software

| | |
|-----------------------|---|
| Firmware Storage: | Fail-safe update (FOTA); Software Update via USB, HTTP(s) (push), FTP (pull), SFTP (pull), TFTP (pull) |
| Radius Server: | External Radius Server Management User Authentication |
| Software features: | Software Development Kit (SDK); |
| Software Version: | 5.0 (updates free of charge) |
| Operating system: | NRSW (NetModule Router Software) |
| Switching: | VLAN (802.1Q) |
| Redundancy: | Multipath TCP, VRRP (Virtual Router Redundancy Protocol), RSTP (Rapid Spanning Tree Protocol) |
| Diagnostics: | Netflow (Softflow), Ping, Traceroute, Tcpdump, Speed Test |
| Configuration: | DHCP Client and Server |
| Security: | Certificate Management (SCEP Client, Signing Requests), Certificate formats: PKCS12, PKCS7, PEM/DER, RSA/Ed25519 (OpenSSH/Dropbear), "Let's encrypt" support, Elliptic Curve Certificates (ECC), 802.1x for LAN, Stateful Firewall, Connection Tracking, Bridge Filtering |
| Time synchronisation: | NTP Client and Server, SNTP Server |
| Routing: | Destination, Policy, Multipath, OSPF, BGP, Multicast, TCP-MSS Clamping, NAT, NAPT, Masquerading |
| Management Software: | Compatible with "Connectivity Suite" |
| Cellular Functions: | Signal Strength Monitoring |

Ambient conditions

| | |
|--------------------------------------|-----------------------------|
| Air Pressure (Operation): | Up to 4000m above sea level |
| Degree of Protection when Installed: | IP40 |
| Operating temperature: | -40-+70 °C |
| Relative humidity (non-condensing): | 0-95 % |

Mechanical construction

| | |
|---------------------|---------------------------|
| Dimensions (WxHxD): | 85/11 mm x 32 mm x 110 mm |
| Weight: | 220 g |
| Housing Material: | brushed aluminium |
| Mount Type: | Flat surface mounting |
| Labeling: | Type label on bottom |

Approvals

| | |
|---|---|
| Basis Standard: | CE according to 2014/53/EU (RED), UKCA (RER), FCC |
| Safety of industrial control equipment: | EN 62368-1, IEC 62368-1, UL 62368-1 |
| Transportation: | E-Mark, ECE R10, Fire Safety ECE R118 |
| UK Regulation Compliance: | UKCA Mark |
| Suitability - Indoor: | Yes |

Reliability

| | |
|------------|---------|
| Guarantee: | 5 years |
|------------|---------|

Accessories

| | |
|----------------------------------|------------------------------------|
| Accessories to Order Separately: | DIN-Rail-Mounting-Clip (942998042) |
|----------------------------------|------------------------------------|

History

| | |
|----------------------|--|
| Update and Revision: | Revision Number: 0.6 Revision Date: 12-15-2025 |
|----------------------|--|

Variants

| Item # | Type |
|-----------|-----------------|
| 942998651 | NB800-WWtScSu-G |

© 2025 Belden, Inc

All Rights Reserved.

Although Belden makes every reasonable effort to ensure their accuracy at the time of this publication, information and specifications described here in are subject to error or omission and to change without notice, and the listing of such information and specifications does not ensure product availability.

Belden provides the information and specifications herein on an "ASIS" basis, with no representations or warranties, whether express, statutory or implied. In no event will Belden be liable for any damages (including consequential, indirect, incidental, special, punitive, or exemplary damages) whatsoever, even if Belden has been advised of the possibility of such damages, whether in an action under contract, negligence or any other theory, arising out of or in connection with the use, or inability to use, the information or specifications described herein.

All sales of Belden products are subject to Belden's standard terms and conditions of sale.

Belden believes this product to be in compliance with all applicable environmental programs as listed in the data sheet. The information provided is correct to the best of Belden's knowledge, information and belief at the date of its publication. This information is designed only as a general guide for the safe handling, storage, and any other operation of the product itself or the one that it becomes a part of. The Product Disclosure is not to be considered a warranty or quality specification. Regulatory information is for guidance purposes only. Product users are responsible for determining the applicability of legislation and regulations based on their individual usage of the product.