



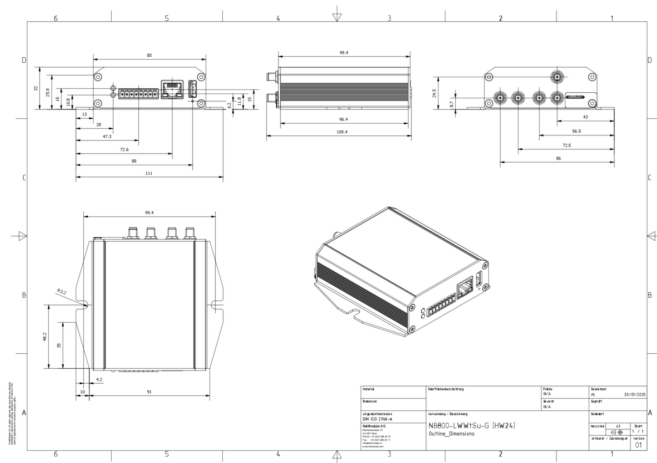
Product: [NB800-LWWtSu2Cn-GEF1x](#) 

IIoT-Router with ETH, LTE, WLAN, BT/BLE, GNSS, USB, 2x CAN active, E-Mark

Product Description

Compact Wireless Router in a small form factor for simple connectivity tasks. With: LTE, WLAN, Bluetooth and Bluetooth Low Energy (LE), Global Positioning (GNSS, GPS), USB Port, 2x CAN active connection, E-Mark vehicle approval

Technical Drawing



Technical Specifications

Product Overview

Name:	NB800-LWWtSu2Cn-GEF1x
WAN:	IPv4; IPv6; IP Passthrough; DynDNS Client; PPPoE;

Product Life Cycle

Life Cycle:	Active - Product is available
-------------	-------------------------------

General Information

Scope of delivery:	Device, General safety instructions, 1x Terminal block 3.5mm
--------------------	--

More Interfaces

USB interface:	1 x USB 2.0 socket to connect an approved USB storage device, USB Type A socket
SIM Cards:	1x Micro SIM (3FF) slot
Local Management and Device Replacement:	Management via Web (HTTPs); Command Line Interface (CLI) over SSH/Serial/Web; SNMP v1/v2c/v3; Discovery via LLDP, CDP, FDP, SONMP, EDP, IRDP
Digital Input:	1x Digital Input, 1x Digital Output
Ethernet Connector Type:	1x Fast Ethernet (100 Base-TX, Auto MDIX, 10/100 Mbps, RJ45)
Power Supply:	8-pin terminal block
CAN Bus:	2x CAN active; Protocol v2.0B (ISO 11898); Signals CANH, CANL; High ≥ 2.75 V; Low ≤ 2.0 V; Up to 1 Mbps; Termination 120 Ohm configurable by software
GPS (global positioning system):	Multi-GNSS, Receiver BeiDou, Galileo, GLONASS, GPS/QZSS, Antennas: active or passive, Sensitivity: Down to -167 dBm, CEP (Circular Error Probability) ≤ 2.5 m, Services: Standalone, GNSS Stream NMEA or JSON, 1x SMA female
I/O Connection:	On terminal block header 3.5mm

I/O Port Functionality:	Input Level: Low 0-3 VDC, High 9-32 VDC; Isolation 1500 VDC; Output Level: 0-32 VDC/1A
CPU:	1 GHz single core
Memory:	512 MB RAM
Storage:	4 GB flash
LEDs:	STAT, MOB/USR, ETH Speed, ETH Activity
Reset Function:	Pin-hole push button for reboot and factory reset

Radio technology

Modules

Description	2G	3G	4G	MIMO	Antenna Connector	Additional Radio Features	Radio Protocol	Frequency Band	Access Point Functionality	Client / STA Functionality
Module 1	GSM/GPRS/EDGE Bands: B2 (1900), B3 (1800), B5 (850), B8 (900)	DC-HSPA+/UMTS Bands: B1 (2100), B2 (1900), B5 (850), B8 (900)	LTE Cat. 4 Bands B1 (2100), B3 (1800), B5 (850), B7 (2600), B8 (900), B20 (800)	2x2 MIMO	2x SMA female	Voice: CSFB				
Module 4				2x2 MIMO	2x SMA female		802.11 a/b/g/n (Wi-Fi 4), Bluetooth 4.2, Bluetooth Low Energy (BLE)	WLAN 2.4 or 5 GHz	Yes (up to 10 clients)	Yes
Load Balance:	Link Prioritization and Aggregation; Load Balancing; Diffserv; SFQ; HTB; Priority based Queuing									

Power requirements

Operating Voltage:	12-24 VDC (±20%)
Power Consumption:	5 W average, 10 W maximum

Diagnostics features

Alarm and event actions:	Email; SMS
Monitoring:	Watchdogs (Hard- and Software); Link Supervision; MQTT Broker

Security features

Multipoint VPN:	VLAN, CSD dial-in, OpenVPN, IPSec, GRE, L2TP, PPTP, IKEv1/v2
-----------------	--

Service

Other services:	DNS Cache;
-----------------	------------

Software

Firmware Storage:	Fail-safe update (FOTA); Software Update via USB, HTTP(s) (push), FTP (pull), SFTP (pull), TFTP (pull)
Radius Server:	External Radius Server Management User Authentication
Software features:	Software Development Kit (SDK);
Software Version:	5.0 (updates free of charge)
Operating system:	NRSW (NetModule Router Software)
Switching:	VLAN (802.1Q)
Redundancy:	Multipath TCP, VRRP (Virtual Router Redundancy Protocol), RSTP (Rapid Spanning Tree Protocol)
Diagnostics:	Netflow (Softflow), Ping, Traceroute, Tcpdump, Speed Test
Configuration:	DHCP Client and Server
Security:	Certificate Management (SCEP Client, Signing Requests), Certificate formats: PKCS12, PKCS7, PEM/DER, RSA/Ed25519 (OpenSSH/Dropbear), "Let's encrypt" support, Elliptic Curve Certificates (ECC), 802.1x for LAN, Stateful Firewall, Connection Tracking, Bridge Filtering
Time synchronisation:	NTP Client and Server, SNTP Server
Routing:	Destination, Policy, Multipath, OSPF, BGP, Multicast, TCP-MSS Clamping, NAT, NAT, Masquerading
Management Software:	Compatible with "Connectivity Suite"
Cellular Functions:	Signal Strength Monitoring

Ambient conditions

Air Pressure (Operation):	Up to 4000m above sea level
Degree of Protection when Installed:	IP40
Operating temperature:	-40-+70 °C
Relative humidity (non-condensing):	0-95 %

Mechanical construction

Dimensions (WxHxD):	85/11 mm x 32 mm x 110 mm
Weight:	220 g
Housing Material:	brushed aluminium
Mount Type:	Flat surface mounting
Mating Side:	from both ends
Labeling:	Type label on bottom

Approvals

Basis Standard:	CE according to 2014/53/EU (RED), UKCA (RER), FCC
Safety of industrial control equipment:	EN 62368-1, IEC 62368-1, UL 62368-1
Transportation:	E-Mark, ECE R10, Fire Safety ECE R118
UK Regulation Compliance:	UKCA Mark
Suitability - Indoor:	Yes

Reliability

Guarantee:	5 years
------------	---------

Accessories

Accessories to Order Separately:	DIN-Rail-Mounting-Clip (942998042)
----------------------------------	------------------------------------

History

Update and Revision:	Revision Number: 0.10 Revision Date: 12-16-2025
----------------------	---

Variants

Item #	Type
942998469	NB800-LWWtSu2Ch-GEFix

© 2026 Belden, Inc

All Rights Reserved.

Although Belden makes every reasonable effort to ensure their accuracy at the time of this publication, information and specifications described here in are subject to error or omission and to change without notice, and the listing of such information and specifications does not ensure product availability.

Belden provides the information and specifications herein on an "ASIS" basis, with no representations or warranties, whether express, statutory or implied. In no event will Belden be liable for any damages (including consequential, indirect, incidental, special, punitive, or exemplary damages) whatsoever, even if Belden has been advised of the possibility of such damages, whether in an action under contract, negligence or any other theory, arising out of or in connection with the use, or inability to use, the information or specifications described herein.

All sales of Belden products are subject to Belden's standard terms and conditions of sale.

Belden believes this product to be in compliance with all applicable environmental programs as listed in the data sheet. The information provided is correct to the best of Belden's knowledge, information and belief at the date of its publication. This information is designed only as a general guide for the safe handling, storage, and any other operation of the product itself or the one that it becomes a part of. The Product Disclosure is not to be considered a warranty or quality specification. Regulatory information is for guidance purposes only. Product users are responsible for determining the applicability of legislation and regulations based on their individual usage of the product.