



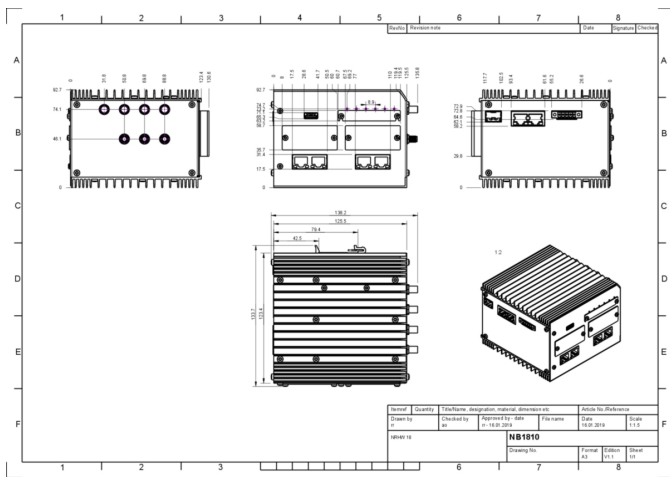
Product: [NB1810-Wac4E](#) 

High-Performance Router with GbE, GbE/SFP Combo, WLAN-ac, 4xGbE

Product Description

High-Performance Router with 1x Gigabit Ethernet, 1x Gigabit / SFP Combo, WLAN 802.11ac (Wi-Fi 5), 4x Gigabit Ethernet Switch

Technical Drawing



Technical Specifications

Product Overview

Name:	NB1810-Wac4E
WAN:	IPv4; IPv6; IP Passthrough; DynDNS Client; PPPoE;

Product Life Cycle

Life Cycle:	Active - Product is available
-------------	-------------------------------

General Information

Scope of delivery:	Device, General safety instructions, 1x Terminal block 3.5mm
--------------------	--

More Interfaces

USB interface:	1 x USB 2.0 socket to connect an approved USB storage device, USB Type A socket
Local Management and Device Replacement:	Management via Web (HTTPS); Command Line Interface (CLI) over SSH/Serial/Web; SNMP v1/v2c/v3; Discovery via LLDP, CDP, FDP, SONMP, EDP, IRDP
Ethernet Connector Type:	Gigabit Ethernet: Auto MDIX, 1000/100/10 Mbps; 1x RJ45; 1x Combo RJ45 or SFP (SFF-8472, max. Class 1 module, 1.25 GbD ±100 ppm, 3.3 VDC ± 10%); 4-Port RJ45 Gbit Ethernet Switch
Power Supply:	5-pin terminal block (connector included)
Serial:	1x RS-232, RS-485; Signals GND, TX, RX; Up to 115kBit/s
CPU:	1.3 GHz dual-core
Memory:	1 GB RAM
Storage:	4 GB flash
LEDs:	6 LEDs + Ethernet LEDs (Speed, Activity)
Reset Function:	Pin-hole push button for reboot and factory reset

Radio technology

Modules

Description	MIMO	Antenna Connector	Additional Radio Features	Radio Protocol	Frequency Band	Access Point Functionality	Client / STA Functionality
Module 4	2x2 MIMO; Max. 866 Mbps	2x SMA female	WLAN FCC ID: TK4WLE600VX	802.11 a/b/g/n/ac (Wi-Fi 5)	WLAN 2.4 or 5 GHz	Yes (up to 100 clients)	Yes

Load Balance: Link Prioritization and Aggregation; Load Balancing; Diffserv; SFQ; HTB; Priority based Queuing

Power requirements

Operating Voltage: 12-48 VDC (-25% .. +10%)

Power Consumption: 15 W average, 25 W maximum

Diagnostics features

Alarm and event actions: Email; SMS

Monitoring: Watchdogs (Hard- and Software); Link Supervision; MQTT Broker

Security features

Multipoint VPN: VXLAN, CSD dial-in, OpenVPN, IPSec, GRE, L2TP, PPTP, IKEv1/v2

Service

Other services: DNS Cache;

Software

Firmware Storage: Fail-safe update (FOTA); Software Update via USB, HTTP(s) (push), FTP (pull), SFTP (pull), TFTP (pull)

Radius Server: External Radius Server Management User Authentication

Software features: Software Development Kit (SDK);

Software Version: 5.0 (updates free of charge)

Operating system: NRSW (NetModule Router Software)

Switching: VLAN (802.1Q)

Redundancy: Multipath TCP, VRRP (Virtual Router Redundancy Protocol), RSTP (Rapid Spanning Tree Protocol)

Diagnostics: Netflow (Softflow), Ping, Traceroute, Topdump, Speed Test

Configuration: DHCP Client and Server

Security: Certificate Management (SCEP Client, Signing Requests), Certificate formats: PKCS12, PKCS7, PEM/DER, RSA/Ed25519 (OpenSSH/Dropbear), "Let's encrypt" support, Elliptic Curve Certificates (ECC), 802.1x for LAN, Stateful Firewall, Connection Tracking, Bridge Filtering

Time synchronisation: NTP Client and Server, SNTP Server

Routing: Destination, Policy, Multipath, OSPF, BGP, Multicast, TCP-MSS Clamping, NAT, NAPT, Masquerading

Management Software: Compatible with "Connectivity Suite"

Cellular Functions: Signal Strength Monitoring

Ambient conditions

Air Pressure (Operation): Up to 4000m above sea level

Degree of Protection when Installed: IP40

Operating temperature: -40-+70 °C

Relative humidity (non-condensing): 0-95 %

Mechanical construction

Dimensions (WxHxD): 95 mm x 128/140 mm x 121 mm

Weight: 1100 g

Housing Material: brushed aluminium

Mount Type: DIN Rail 35 mm

Mating Side: from the front, top and bottom

Labeling: Type label on bottom

Approvals

Basis Standard: CE according to 2014/53/EU (RED), UKCA (RER), FCC

UK Regulation Compliance: UKCA Mark

Suitability - Indoor: Yes

Further Instructions

History

Update and Revision: Revision Number: 0.4 Revision Date: 12-15-2025

Variants

Item #	Type
942998285	NB1810-Wac4E

© 2026 Belden, Inc

All Rights Reserved.

Although Belden makes every reasonable effort to ensure their accuracy at the time of this publication, information and specifications described here in are subject to error or omission and to change without notice, and the listing of such information and specifications does not ensure product availability.

Belden provides the information and specifications herein on an "ASIS" basis, with no representations or warranties, whether express, statutory or implied. In no event will Belden be liable for any damages (including consequential, indirect, incidental, special, punitive, or exemplary damages) whatsoever, even if Belden has been advised of the possibility of such damages, whether in an action under contract, negligence or any other theory, arising out of or in connection with the use, or inability to use, the information or specifications described herein.

All sales of Belden products are subject to Belden's standard terms and conditions of sale.

Belden believes this product to be in compliance with all applicable environmental programs as listed in the data sheet. The information provided is correct to the best of Belden's knowledge, information and belief at the date of its publication. This information is designed only as a general guide for the safe handling, storage, and any other operation of the product itself or the one that it becomes a part of. The Product Disclosure is not to be considered a warranty or quality specification. Regulatory information is for guidance purposes only. Product users are responsible for determining the applicability of legislation and regulations based on their individual usage of the product.