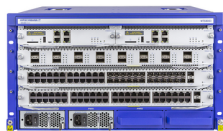


**Product:** [MTS8003-Chassis](#) 



**MAMMUTHUS Layer3 Modular Core Switch - MTS8000 Series Switch**

**Product Description**

6U rack mount, dual engine, 3 × media modules, 4 × modular PSUs, 2 × fan trays

**Technical Specifications**

**Product description**

Type:	MTS8003-Chassis
Description:	6U rack mount, dual engine, 3 × media modules, 4 × modular PSUs, 2 × fan trays
Part Number:	942999801
Port type and quantity:	2 × engine slots, 3 × media module slots
Engine Redundancy:	Yes
Heat Radiation Type:	2 × modular redundant fan trays, hot swappable, 2 × fan trays are mandatory for MTS8003-Chassis

**More Interfaces**

Power Supply:	4 × modular redundant PSUs, hot swappable, Min. 1 × PSU, Max. 4 × PSUs
---------------	--

**Power requirements**

Operating Voltage:	100-240VAC, 50-60HZ
--------------------	---------------------

**Ambient conditions**

Permissible Humidity (Storage/Transport):	5% to 95%
Operating temperature:	0-+55 °C
Storage/transport temperature:	-40-+70 °C
Relative humidity (non-condensing):	10-90 %

**Mechanical construction**

Width:	440 mm
Height:	266 mm
Depth:	430 mm
Weight:	16.2 kg
Mounting:	Rack mount

**Mechanical stability**

IEC 60068-2-6 vibration:	1 mm, 2 Hz-13.2 Hz, 90 min.; 0.7 g, 13.2 Hz-100 Hz, 90 min.; 3.5 mm, 3 Hz-9 Hz, 10 cycles, 1 octave/min.; 1 g, 9 Hz-150 Hz, 10 cycles, 1 octave/min
IEC 60068-2-27 shock:	15 g, 11 ms duration, 18 shocks

**EMC interference immunity**

EN 61000-4-2 electrostatic discharge (ESD):	4 kV contact discharge, 8 kV air discharge
EN 61000-4-3 electromagnetic field:	10V/m (80-1000MHz), 3V/m (1000-6000MHz)
EN 61000-4-4 fast transients (burst):	2 kV power line, 1 kV data line
EN 61000-4-5 surge voltage:	power line: 2 kV (line/earth), 1 kV (line/line), 1 kV data line
EN 61000-4-6 Conducted Immunity:	10 V (150 kHz-80 MHz)
EN 61000-4-8 power freq magnetic field:	30A/m
EN 61000-4-11 voltage dips, short interrupt:	0%(20ms), 40%(300ms), 70%(500ms), 0%(5s)

## EMC emitted immunity

EN 55032:	EN 55032 Class A
EN 61000-3-2:	EN 61000-3-2 Class A
EN 61000-3-3:	EN 61000-3-3
FCC CFR47 Part 15:	FCC 47CFR Part 15, Class A

## Approvals

FCC:	CE/FCC Compliant
China Network Access Certificate:	Compliant
Common Criteria:	EAL 2+
RoHS Compliant:	RoHS ((EU) 2015/863) and RoHS (GB/T26572-2011) compliant

## Scope of delivery and accessories

Accessories to Order Separately:	Engine, media module, switch fabric, hybrid card, PSU, fan tray, SFP, Network Management Industrial HiVision
Scope of delivery:	Device, console cable, installation package, **Power cord does not included in the package

## History

Update and Revision:	Revision Number: 0.59 Revision Date: 02-03-2025
----------------------	---

## Variants

Item #	Type
942999801	MTS8003-Chassis

© 2025 Belden, Inc

All Rights Reserved.

Although Belden makes every reasonable effort to ensure their accuracy at the time of this publication, information and specifications described here in are subject to error or omission and to change without notice, and the listing of such information and specifications does not ensure product availability.

Belden provides the information and specifications herein on an "ASIS" basis, with no representations or warranties, whether express, statutory or implied. In no event will Belden be liable for any damages (including consequential, indirect, incidental, special, punitive, or exemplary damages) whatsoever, even if Belden has been advised of the possibility of such damages, whether in an action under contract, negligence or any other theory, arising out of or in connection with the use, or inability to use, the information or specifications described herein.

All sales of Belden products are subject to Belden's standard terms and conditions of sale.

Belden believes this product to be in compliance with all applicable environmental programs as listed in the data sheet. The information provided is correct to the best of Belden's knowledge, information and belief at the date of its publication. This information is designed only as a general guide for the safe handling, storage, and any other operation of the product itself or the one that it becomes a part of. The Product Disclosure is not to be considered a warranty or quality specification. Regulatory information is for guidance purposes only. Product users are responsible for determining the applicability of legislation and regulations based on their individual usage of the product.