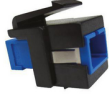




Product: [KEYCONNECT SC SIMPLEX MODULES](#)



KeyConnect Fiber Module SC Simplex

Product Description

KeyConnect Fiber Module SC Simplex. Available in several colors and fiber types.

Technical Specifications

Product Overview

Suitable Applications:	FiberExpress Solutions, Backbone, Telecommunications Room, Main Distribution Room
------------------------	---

Physical Characteristics (Overall)

Height:	0.917 m
Width:	0.685
Depth:	1.31
Front Connection:	Flush
Packaging:	10 units packaged in a plastic bag.
Weight:	0.013 lbs

Connectors

Materials

Description	Material	Type
Front Connection	Plastic - UL94V-0	SC-Simplex
Rear Connection	Plastic - UL94V-0	SC-Simplex

Temperature Range

Installation Temperature Range:	-10°C To +60°C
Storage Temperature Range:	-40°C To +70°C
Operating Temperature Range:	-10°C To +60°C

Mechanical Characteristics

Footprint/Type:	KeyConnect
Connector/Hardware Retention:	20 lbs

Standards

TIA/EIA Compliance:	TIA 568.C.3
---------------------	-------------

Applicable Environmental and Other Programs

Environmental Space:	Indoor
EU Directive 2002/95/EC (RoHS):	Yes
MII Order #39 (China RoHS):	EUP 50

Flammability, LS0H, Toxicity Testing

Safety Listing:	c(UL)us Listed
-----------------	----------------

Related Part Numbers

Related Parts:	Compatible KeyConnect-style Faceplate and Patch Panel, SC Fiber Patch Cord
----------------	--

Variants

Item #	Color	UPC
AX102683	Almond	611589005470
AX102686	Almond	611589005500
AX105374-AL	Almond	611589152969
AX105643-AL	Almond	611589152952
AX102685	Black	611589005494
AX102688	Black	611589005524
AX105374-BK	Black	611589152976
AX105643-BK	Black	611589152983
AX102686-GY	Dark Gray	611589156226
AX102684	Electric White	611589005487
AX102687	Electric White	611589005517
AX105374-EW	Electric White	611589108140
AX105643-EW	Electric White	611589152990

Product Notes

Included Parts:	Dust Caps
Notes:	For additional information about this product, visit our web site at http://www.belden.com

History

Update and Revision:	Revision Number: 0.180 Revision Date: 03-04-2023
----------------------	--

© 2024 Belden, Inc
All Rights Reserved.

Although Belden makes every reasonable effort to ensure their accuracy at the time of this publication, information and specifications described here in are subject to error or omission and to change without notice, and the listing of such information and specifications does not ensure product availability.

Belden provides the information and specifications herein on an "ASIS" basis, with no representations or warranties, whether express, statutory or implied. In no event will Belden be liable for any damages (including consequential, indirect, incidental, special, punitive, or exemplary damages) whatsoever, even if Belden has been advised of the possibility of such damages, whether in an action under contract, negligence or any other theory, arising out of or in connection with the use, or inability to use, the information or specifications described herein.

All sales of Belden products are subject to Belden's standard terms and conditions of sale.

Belden believes this product to be in compliance with all applicable environmental programs as listed in the data sheet. The information provided is correct to the best of Belden's knowledge, information and belief at the date of its publication. This information is designed only as a general guide for the safe handling, storage, and any other operation of the product itself or the one that it becomes a part of. The Product Disclosure is not to be considered a warranty or quality specification. Regulatory information is for guidance purposes only. Product users are responsible for determining the applicability of legislation and regulations based on their individual usage of the product.