

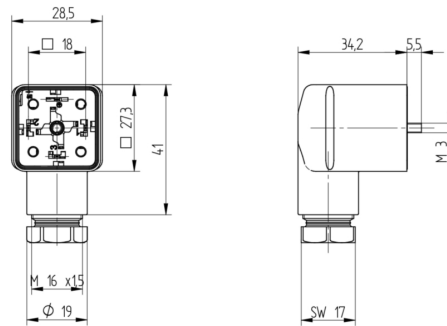
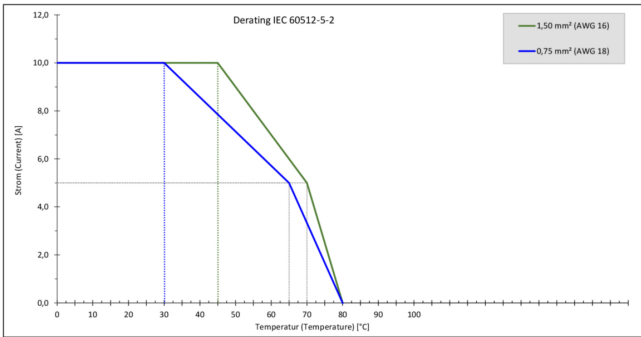
GDM Standard DIN Standard Field Attachable Connector: Form A, 4-pin



Product Description

GDM Standard DIN Standard Field Attachable Connector: Form A, 4-pin (3+1PE; PE across cable outlet), transparent housing, screw type, M16; with suppressor diode and yellow LED, 24 V AC/DC, 10 A

Technical Drawing



Montageanleitung Ventilatorleuchtebringer

GDM

ON EN 157302-001

PSL 017

Abmessungen:
Kabeldurchmesser: 6,0 bis 8,0 mm / 6 bis 30 mm
Leuchtmittelgröße: AEGE 14

Achtung!
Steckender Niederspannung Netz Last oder Spannung steuern / brechen

Bei korrekter Montage ist der Druckverlust von Überspannungen und der durch Überstrom verursachten Wärmeentwicklung durch die Schutzfunktion des Ventilatorleuchtebringers begrenzt. Bei falscher Montage kann es zu einer Überhitzung des Ventilatorleuchtebringers kommen, was zu einer Beschädigung des Ventilatorleuchtebringers und zu einer Beschädigung des Leuchtmittels führen kann. Bei falscher Montage kann es zu einer Beschädigung des Ventilatorleuchtebringers kommen, was zu einer Beschädigung des Ventilatorleuchtebringers und zu einer Beschädigung des Leuchtmittels führen kann.

Einbau:
Der Ventilatorleuchtebringer ist so zu montieren, dass er an der Wand befestigt werden kann. Die Montageanleitung des Ventilatorleuchtebringers beachten. Die Montageanleitung des Ventilatorleuchtebringers beachten. Die Montageanleitung des Ventilatorleuchtebringers beachten.

Einbau:
Der Ventilatorleuchtebringer ist so zu montieren, dass er an der Wand befestigt werden kann. Die Montageanleitung des Ventilatorleuchtebringers beachten. Die Montageanleitung des Ventilatorleuchtebringers beachten. Die Montageanleitung des Ventilatorleuchtebringers beachten.

Bedienungsanleitung Ventilatorleuchtebringer

Die Ventilatorleuchtebringer sind so zu montieren, dass sie an der Wand befestigt werden können. Die Montageanleitung des Ventilatorleuchtebringers beachten. Die Montageanleitung des Ventilatorleuchtebringers beachten. Die Montageanleitung des Ventilatorleuchtebringers beachten.

Einbau:
Der Ventilatorleuchtebringer ist so zu montieren, dass er an der Wand befestigt werden kann. Die Montageanleitung des Ventilatorleuchtebringers beachten. Die Montageanleitung des Ventilatorleuchtebringers beachten. Die Montageanleitung des Ventilatorleuchtebringers beachten.

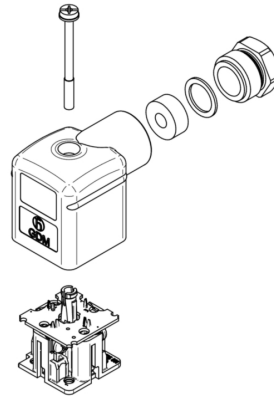
Einbau:
Der Ventilatorleuchtebringer ist so zu montieren, dass er an der Wand befestigt werden kann. Die Montageanleitung des Ventilatorleuchtebringers beachten. Die Montageanleitung des Ventilatorleuchtebringers beachten. Die Montageanleitung des Ventilatorleuchtebringers beachten.

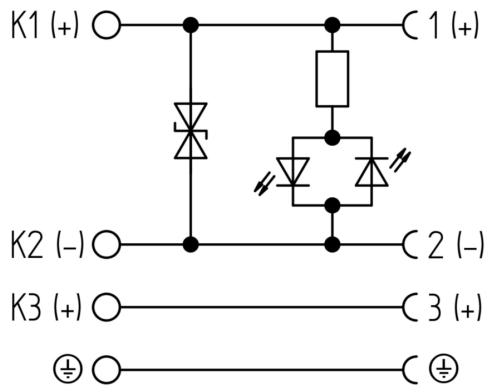
Einbau:
Der Ventilatorleuchtebringer ist so zu montieren, dass er an der Wand befestigt werden kann. Die Montageanleitung des Ventilatorleuchtebringers beachten. Die Montageanleitung des Ventilatorleuchtebringers beachten. Die Montageanleitung des Ventilatorleuchtebringers beachten.

Montage

1. Schraubenbohrung, Röhrendurchmesser / Anzeigenummer

ØNenn	ØBohrung	ØEinbauloch	ØEinbauloch
ØNenn 16	16,0 - 8,0 mm	150 mm	150 mm
ØNenn 18	18,0 - 8,0 mm	150 mm	150 mm
ØNenn 20	20,0 - 8,0 mm	150 mm	150 mm
ØNenn 22	22,0 - 8,0 mm	150 mm	150 mm
ØNenn 24	24,0 - 8,0 mm	150 mm	150 mm
ØNenn 26	26,0 - 8,0 mm	150 mm	150 mm
ØNenn 28	28,0 - 8,0 mm	150 mm	150 mm
ØNenn 30	30,0 - 8,0 mm	150 mm	150 mm
ØNenn 32	32,0 - 8,0 mm	150 mm	150 mm
ØNenn 34	34,0 - 8,0 mm	150 mm	150 mm
ØNenn 36	36,0 - 8,0 mm	150 mm	150 mm
ØNenn 38	38,0 - 8,0 mm	150 mm	150 mm
ØNenn 40	40,0 - 8,0 mm	150 mm	150 mm
ØNenn 42	42,0 - 8,0 mm	150 mm	150 mm
ØNenn 44	44,0 - 8,0 mm	150 mm	150 mm
ØNenn 46	46,0 - 8,0 mm	150 mm	150 mm
ØNenn 48	48,0 - 8,0 mm	150 mm	150 mm
ØNenn 50	50,0 - 8,0 mm	150 mm	150 mm
ØNenn 52	52,0 - 8,0 mm	150 mm	150 mm
ØNenn 54	54,0 - 8,0 mm	150 mm	150 mm
ØNenn 56	56,0 - 8,0 mm	150 mm	150 mm
ØNenn 58	58,0 - 8,0 mm	150 mm	150 mm
ØNenn 60	60,0 - 8,0 mm	150 mm	150 mm
ØNenn 62	62,0 - 8,0 mm	150 mm	150 mm
ØNenn 64	64,0 - 8,0 mm	150 mm	150 mm
ØNenn 66	66,0 - 8,0 mm	150 mm	150 mm
ØNenn 68	68,0 - 8,0 mm	150 mm	150 mm
ØNenn 70	70,0 - 8,0 mm	150 mm	150 mm
ØNenn 72	72,0 - 8,0 mm	150 mm	150 mm
ØNenn 74	74,0 - 8,0 mm	150 mm	150 mm
ØNenn 76	76,0 - 8,0 mm	150 mm	150 mm
ØNenn 78	78,0 - 8,0 mm	150 mm	150 mm
ØNenn 80	80,0 - 8,0 mm	150 mm	150 mm
ØNenn 82	82,0 - 8,0 mm	150 mm	150 mm
ØNenn 84	84,0 - 8,0 mm	150 mm	150 mm
ØNenn 86	86,0 - 8,0 mm	150 mm	150 mm
ØNenn 88	88,0 - 8,0 mm	150 mm	150 mm
ØNenn 90	90,0 - 8,0 mm	150 mm	150 mm
ØNenn 92	92,0 - 8,0 mm	150 mm	150 mm
ØNenn 94	94,0 - 8,0 mm	150 mm	150 mm
ØNenn 96	96,0 - 8,0 mm	150 mm	150 mm
ØNenn 98	98,0 - 8,0 mm	150 mm	150 mm
ØNenn 100	100,0 - 8,0 mm	150 mm	150 mm
ØNenn 102	102,0 - 8,0 mm	150 mm	150 mm
ØNenn 104	104,0 - 8,0 mm	150 mm	150 mm
ØNenn 106	106,0 - 8,0 mm	150 mm	150 mm
ØNenn 108	108,0 - 8,0 mm	150 mm	150 mm
ØNenn 110	110,0 - 8,0 mm	150 mm	150 mm
ØNenn 112	112,0 - 8,0 mm	150 mm	150 mm
ØNenn 114	114,0 - 8,0 mm	150 mm	150 mm
ØNenn 116	116,0 - 8,0 mm	150 mm	150 mm
ØNenn 118	118,0 - 8,0 mm	150 mm	150 mm
ØNenn 120	120,0 - 8,0 mm	150 mm	150 mm
ØNenn 122	122,0 - 8,0 mm	150 mm	150 mm
ØNenn 124	124,0 - 8,0 mm	150 mm	150 mm
ØNenn 126	126,0 - 8,0 mm	150 mm	150 mm
ØN			





Technical Specifications

Technical Data

Product Family:	Valve Connectors
Product Sub Family:	GDM Standard
Brand:	Hirschmann
Connector Type:	Field attachable
Type of Contact / Gender:	Female
Connector Design:	Angled
Number of Pins:	3+PE (PE across cable outlet)
Coding:	A
Shielding:	Unshielded
Attachment Type:	Central Screw
Rated Impulse Voltage:	4.0 kV (PCBA 2.0 kV)
Operating Voltage:	24 V AC/DC
Rated Current*:	10 A
Contact Resistance:	≤ 10 mOhm
Insulation Resistance:	> 10 ⁹ Ohm
Mating Cycles:	≤ 50
Type of Connection:	Screw
Cable Gland:	M16
Conductor Cross Section:	0.25 - 1.5 mm²
Suitable Cables:	Ø 4.5 - 9 mm
Ambient Temperature (Operation)*:	-25°C to +80°C
Protection Degree / IP Rating**:	IP65
Design Standard:	DIN EN 175301-803-A, ISO 4400
Pollution Degree:	3 acc. to DIN EN 60664-1 (VDE 0110-1)
Clearance / Creepage Distance:	DIN EN 60664-1 (2008/01); VDE 0110-1
Overvoltage Category:	III acc. to DIN EN 60664-1 (VDE 0110-1)

Materials

Contact Base Material:	CuZn
Contact Plating:	Cu/Sn
Contact Bearer Material:	PA GF
Contact Bearer Color:	black
Flammability Class (Contact Bearer):	UL 94 HB
Housing Material:	PA GF
Housing Color:	Translucent
Flammability Class (Housing):	UL 94 HB
Cable Gland Material:	PA GF
Cable Gland Gasket:	NBR
Cable Gland Color:	Black

Attachment Material:	Steel, Philips combi slot
Gasket Material:	Sold separately

Protection Circuitry

Function Indicator:	Yellow LED
Protective Circuit:	Supressor diode

Additional Technical Data

Fastening Torque (Contact Screw):	M3: (25-30) Ncm
Fastening Torque (Cable Gland):	(150-200) Ncm
Fastening Torque (Attachment):	(50-60) Ncm

Approvals

VDE:	yes
SEV:	yes

Safety & Environmental Compliance

RoHS Compliant:	yes
-----------------	-----

Notes

Note Derating:	Notice derating
Protection Degree / IP Rating Note:	** only if mounted and locked in combination with Hirschmann / Lumberg Automation connector.
Note:	Do not connect or disconnect under load.

Variants

Item #	Item Description
16253	GDM31F6-S24-10D

© 2025 Belden, Inc
All Rights Reserved.

Although Belden makes every reasonable effort to ensure their accuracy at the time of this publication, information and specifications described here in are subject to error or omission and to change without notice, and the listing of such information and specifications does not ensure product availability.

Belden provides the information and specifications herein on an "ASIS" basis, with no representations or warranties, whether express, statutory or implied. In no event will Belden be liable for any damages (including consequential, indirect, incidental, special, punitive, or exemplary damages) whatsoever, even if Belden has been advised of the possibility of such damages, whether in an action under contract, negligence or any other theory, arising out of or in connection with the use, or inability to use, the information or specifications described herein.

All sales of Belden products are subject to Belden's standard terms and conditions of sale.

Belden believes this product to be in compliance with all applicable environmental programs as listed in the data sheet. The information provided is correct to the best of Belden's knowledge, information and belief at the date of its publication. This information is designed only as a general guide for the safe handling, storage, and any other operation of the product itself or the one that it becomes a part of. The Product Disclosure is not to be considered a warranty or quality specification. Regulatory information is for guidance purposes only. Product users are responsible for determining the applicability of legislation and regulations based on their individual usage of the product.