

Product: [GDM31AL-AOU-1KD](#)

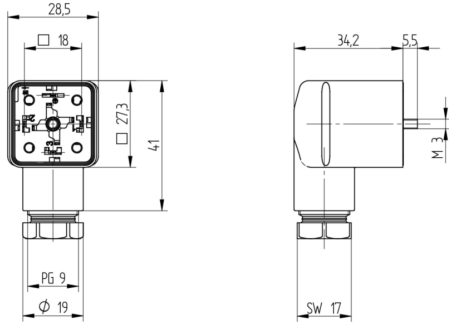


GDM Standard DIN Standard Field Attachable Connector: Form A, 4-pin (3+1PE; PE across cable outlet), UL 2238, black housing, screw type, PG9 with strain relief; without circuitry, 230 V AC/DC, 10 A

Product Description

GDM Standard DIN Standard Field Attachable Connector: Form A, 4-pin (3+1PE; PE across cable outlet), UL 2238, black housing, screw type, PG9 with strain relief, without circuitry, 230 V AC/DC, 10 A

Technical Drawing



Montageanleitung Ventilluftventilator

GDM

DIN EN 175305-803

PHS, 4/17

Kabelspezifikation

Kabeldurchmesser: 0,5 bis 0,8 mm (SD) bis 30,0 mm
 Leiterquerschnitt: AWG 20 - AWG 14

Achtung!
Steckerhübscher nicht unter Last oder Spannung stecken / connect!

Wir haben den Kontakt für Ihre Rückmeldung und Übermittlung der Beschreibungen bereit und können Ihnen bei Bedarf weitere Informationen über das Produkt, die Handhabung des Produkts oder auf andere Weise bereitstellen. In besonderen Fällen werden wir Sie bei Bedarf kontaktieren, um weitere Informationen zu erhalten.
 Bitte beachten Sie, dass die Produktbeschreibung nur eine Zusammenfassung der Informationen ist und nicht die vollständige Beschreibung des Produkts darstellt. Bitte lesen Sie die vollständige Beschreibung des Produkts, die unter [www.hirschmann.com](#) zu finden ist.
 © 2015 Hirschmann GmbH

Warnung!
Dieses Produkt ist ein elektrisches Bauteil, das bei unsachgemäßer Handhabung zu Verletzungen oder Schäden führen kann. Bitte lesen Sie die Bedienungsanleitung des Produkts, bevor Sie es verwenden.

Wartung
Dieses Produkt ist ein elektrisches Bauteil, das bei unsachgemäßer Handhabung zu Verletzungen oder Schäden führen kann. Bitte lesen Sie die Bedienungsanleitung des Produkts, bevor Sie es verwenden.

Technische Merkmale

Technische Merkmale sind Merkmale, die für die bestimmungsgemäße Verwendung des Produkts erforderlich sind. Diese Merkmale sind in der Beschreibung des Produkts aufgeführt. Bitte lesen Sie die Beschreibung des Produkts, um die technischen Merkmale des Produkts zu erfahren.

Material
Das Produkt ist aus einem Material gefertigt, das für die bestimmungsgemäße Verwendung des Produkts geeignet ist. Bitte lesen Sie die Beschreibung des Produkts, um die technischen Merkmale des Produkts zu erfahren.

Abstand
Der Abstand zwischen den Kontaktpunkten des Produkts beträgt 2,54 mm. Bitte lesen Sie die Beschreibung des Produkts, um die technischen Merkmale des Produkts zu erfahren.

Optionen
Das Produkt ist mit verschiedenen Optionen ausgestattet. Bitte lesen Sie die Beschreibung des Produkts, um die technischen Merkmale des Produkts zu erfahren.

Abbildung des Produkts
Das Produkt wird in der Abbildung dargestellt. Bitte lesen Sie die Beschreibung des Produkts, um die technischen Merkmale des Produkts zu erfahren.

Warnung
Dieses Produkt ist ein elektrisches Bauteil, das bei unsachgemäßer Handhabung zu Verletzungen oder Schäden führen kann. Bitte lesen Sie die Bedienungsanleitung des Produkts, bevor Sie es verwenden.

Wartung
Dieses Produkt ist ein elektrisches Bauteil, das bei unsachgemäßer Handhabung zu Verletzungen oder Schäden führen kann. Bitte lesen Sie die Bedienungsanleitung des Produkts, bevor Sie es verwenden.

Montage

1. Leitungsanforderung, Kabelkonformität / Anpreisung

GDM-Mat.	Ø	Ø ₁ - Ø ₂ mm	10A/16A
GDM-Mat. 1	5,0	5,0 - 5,5	10A/16A
GDM-Mat. 2	6,0	6,0 - 6,5	10A/16A
GDM-Mat. 3	7,0	7,0 - 7,5	10A/16A
GDM-Mat. 4	8,0	8,0 - 8,5	10A/16A
GDM-Mat. 5	9,0	9,0 - 9,5	10A/16A
GDM-Mat. 6	10,0	10,0 - 10,5	10A/16A
GDM-Mat. 7	11,0	11,0 - 11,5	10A/16A

2. Schutzkategorie

Überspannung / Anpreisung / Elektr. Werte

Überspannung	Elektr. Werte
600 V	400 V
600 V	60 / 300 V AC/DC
600 V	500 / 500 V AC/DC
600 V	1000 / 300 V AC/DC
600 V	1500 / 300 V AC/DC

3. Betriebskategorie

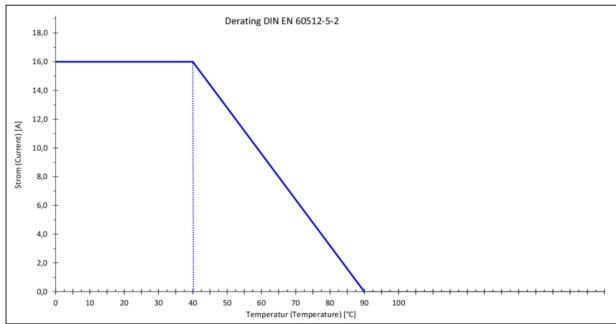
Überspannung	Elektr. Werte
600 V	400 V
600 V	60 / 300 V AC/DC
600 V	500 / 500 V AC/DC
600 V	1000 / 300 V AC/DC
600 V	1500 / 300 V AC/DC

4. Leitung Adren. Abkürzung

Überspannung	Elektr. Werte
600 V	400 V
600 V	60 / 300 V AC/DC
600 V	500 / 500 V AC/DC
600 V	1000 / 300 V AC/DC
600 V	1500 / 300 V AC/DC

5. C-Plug Standard für Leitungsbauweise GDM A01 aus

Typ: IEC 60320, IEC 60321, IEC 60322, IEC 60323, IEC 60324, IEC 60325, IEC 60326, IEC 60327, IEC 60328, IEC 60329, IEC 60330, IEC 60331, IEC 60332, IEC 60333, IEC 60334, IEC 60335, IEC 60336, IEC 60337, IEC 60338, IEC 60339, IEC 60340, IEC 60341, IEC 60342, IEC 60343, IEC 60344, IEC 60345, IEC 60346, IEC 60347, IEC 60348, IEC 60349, IEC 60350, IEC 60351, IEC 60352, IEC 60353, IEC 60354, IEC 60355, IEC 60356, IEC 60357, IEC 60358, IEC 60359, IEC 60360, IEC 60361, IEC 60362, IEC 60363, IEC 60364, IEC 60365, IEC 60366, IEC 60367, IEC 60368, IEC 60369, IEC 60370, IEC 60371, IEC 60372, IEC 60373, IEC 60374, IEC 60375, IEC 60376, IEC 60377, IEC 60378, IEC 60379, IEC 60380, IEC 60381, IEC 60382, IEC 60383, IEC 60384, IEC 60385, IEC 60386, IEC 60387, IEC 60388, IEC 60389, IEC 60390, IEC 60391, IEC 60392, IEC 60393, IEC 60394, IEC 60395, IEC 60396, IEC 60397, IEC 60398, IEC 60399, IEC 60400, IEC 60401, IEC 60402, IEC 60403, IEC 60404, IEC 60405, IEC 60406, IEC 60407, IEC 60408, IEC 60409, IEC 60410, IEC 60411, IEC 60412, IEC 60413, IEC 60414, IEC 60415, IEC 60416, IEC 60417, IEC 60418, IEC 60419, IEC 60420, IEC 60421, IEC 60422, IEC 60423, IEC 60424, IEC 60425, IEC 60426, IEC 60427, IEC 60428, IEC 60429, IEC 60430, IEC 60431, IEC 60432, IEC 60433, IEC 60434, IEC 60435, IEC 60436, IEC 60437, IEC 60438, IEC 60439, IEC 60440, IEC 60441, IEC 60442, IEC 60443, IEC 60444, IEC 60445, IEC 60446, IEC 60447, IEC 60448, IEC 60449, IEC 60450, IEC 60451, IEC 60452, IEC 60453, IEC 60454, IEC 60455, IEC 60456, IEC 60457, IEC 60458, IEC 60459, IEC 60460, IEC 60461, IEC 60462, IEC 60463, IEC 60464, IEC 60465, IEC 60466, IEC 60467, IEC 60468, IEC 60469, IEC 60470, IEC 60471, IEC 60472, IEC 60473, IEC 60474, IEC 60475, IEC 60476, IEC 60477, IEC 60478, IEC 60479, IEC 60480, IEC 60481, IEC 60482, IEC 60483, IEC 60484, IEC 60485, IEC 60486, IEC 60487, IEC 60488, IEC 60489, IEC 60490, IEC 60491, IEC 60492, IEC 60493, IEC 60494, IEC 60495, IEC 60496, IEC 60497, IEC 60498, IEC 60499, IEC 60500, IEC 60501, IEC 60502, IEC 60503, IEC 60504, IEC 60505, IEC 60506, IEC 60507, IEC 60508, IEC 60509, IEC 60510, IEC 60511, IEC 60512, IEC 60513, IEC 60514, IEC 60515, IEC 60516, IEC 60517, IEC 60518, IEC 60519, IEC 60520, IEC 60521, IEC 60522, IEC 60523, IEC 60524, IEC 60525, IEC 60526, IEC 60527, IEC 60528, IEC 60529, IEC 60530, IEC 60531, IEC 60532, IEC 60533, IEC 60534, IEC 60535, IEC 60536, IEC 60537, IEC 60538, IEC 60539, IEC 60540, IEC 60541, IEC 60542, IEC 60543, IEC 60544, IEC 60545, IEC 60546, IEC 60547, IEC 60548, IEC 60549, IEC 60550, IEC 60551, IEC 60552, IEC 60553, IEC 60554, IEC 60555, IEC 60556, IEC 60557, IEC 60558, IEC 60559, IEC 60560, IEC 60561, IEC 60562, IEC 60563, IEC 60564, IEC 60565, IEC 60566, IEC 60567, IEC 60568, IEC 60569, IEC 60570, IEC 60571, IEC 60572, IEC 60573, IEC 60574, IEC 60575, IEC 60576, IEC 60577, IEC 60578, IEC 60579, IEC 60580, IEC 60581, IEC 60582, IEC 60583, IEC 60584, IEC 60585, IEC 60586, IEC 60587, IEC 60588, IEC 60589, IEC 60590, IEC 60591, IEC 60592, IEC 60593, IEC 60594, IEC 60595, IEC 60596, IEC 60597, IEC 60598, IEC 60599, IEC 60600, IEC 60601, IEC 60602, IEC 60603, IEC 60604, IEC 60605, IEC 60606, IEC 60607, IEC 60608, IEC 60609, IEC 60610, IEC 60611, IEC 60612, IEC 60613, IEC 60614, IEC 60615, IEC 60616, IEC 60617, IEC 60618, IEC 60619, IEC 60620, IEC 60621, IEC 60622, IEC 60623, IEC 60624, IEC 60625, IEC 60626, IEC 60627, IEC 60628, IEC 60629, IEC 60630, IEC 60631, IEC 60632, IEC 60633, IEC 60634, IEC 60635, IEC 60636, IEC 60637, IEC 60638, IEC 60639, IEC 60640, IEC 60641, IEC 60642, IEC 60643, IEC 60644, IEC 60645, IEC 60646, IEC 60647, IEC 60648, IEC 60649, IEC 60650, IEC 60651, IEC 60652, IEC 60653, IEC 60654, IEC 60655, IEC 60656, IEC 60657, IEC 60658, IEC 60659, IEC 60660, IEC 60661, IEC 60662, IEC 60663, IEC 60664, IEC 60665, IEC 60666, IEC 60667, IEC 60668, IEC 60669, IEC 60670, IEC 60671, IEC 60672, IEC 60673, IEC 60674, IEC 60675, IEC 60676, IEC 60677, IEC 60678, IEC 60679, IEC 60680, IEC 60681, IEC 60682, IEC 60683, IEC 60684, IEC 60685, IEC 60686, IEC 60687, IEC 60688, IEC 60689, IEC 60690, IEC 60691, IEC 60692, IEC 60693, IEC 60694, IEC 60695, IEC 60696, IEC 60697, IEC 60698, IEC 60699, IEC 60700, IEC 60701, IEC 60702, IEC 60703, IEC 60704, IEC 60705, IEC 60706, IEC 60707, IEC 60708, IEC 60709, IEC 60710, IEC 60711, IEC 60712, IEC 60713, IEC 60714, IEC 60715, IEC 60716, IEC 60717, IEC 60718, IEC 60719, IEC 60720, IEC 60721, IEC 60722, IEC 60723, IEC 60724, IEC 60725, IEC 60726, IEC 60727, IEC 60728, IEC 60729, IEC 60730, IEC 60731, IEC 60732, IEC 60733, IEC 60734, IEC 60735, IEC 60736, IEC 60737, IEC 60738, IEC 60739, IEC 60740, IEC 60741, IEC 60742, IEC 60743, IEC 60744, IEC 60745, IEC 60746, IEC 60747, IEC 60748, IEC 60749, IEC 60750, IEC 60751, IEC 60752, IEC 60753, IEC 60754, IEC 60755, IEC 60756, IEC 60757, IEC 60758, IEC 60759, IEC 60760, IEC 60761, IEC 60762, IEC 60763, IEC 60764, IEC 60765, IEC 60766, IEC 60767, IEC 60768, IEC 60769, IEC 60770, IEC 60771, IEC 60772, IEC 60773, IEC 60774, IEC 60775, IEC 60776, IEC 60777, IEC 60778, IEC 60779, IEC 60780, IEC 60781, IEC 60782, IEC 60783, IEC 60784, IEC 60785, IEC 60786, IEC 60787, IEC 60788, IEC 60789, IEC 60790, IEC 60791, IEC 60792, IEC 60793, IEC 60794, IEC 60795, IEC 60796, IEC 60797, IEC 60798, IEC 60799, IEC 60800, IEC 60801, IEC 60802, IEC 60803, IEC 60804, IEC 60805, IEC 60806, IEC 60807, IEC 60808, IEC 60809, IEC 60810, IEC 60811, IEC 60812, IEC 60813, IEC 60814, IEC 60815, IEC 60816, IEC 60817, IEC 60818, IEC 60819, IEC 60820, IEC 60821, IEC 60822, IEC 60823, IEC 60824, IEC 60825, IEC 60826, IEC 60827, IEC 60828, IEC 60829, IEC 60830, IEC 60831, IEC 60832, IEC 60833, IEC 60834, IEC 60835, IEC 60836, IEC 60837, IEC 60838, IEC 60839, IEC 60840, IEC 60841, IEC 60842, IEC 60843, IEC 60844, IEC 60845, IEC 60846, IEC 60847, IEC 60848, IEC 60849, IEC 60850, IEC 60851, IEC 60852, IEC 60853, IEC 60854, IEC 60855, IEC 60856, IEC 60857, IEC 60858, IEC 60859, IEC 60860, IEC 60861, IEC 60862, IEC 60863, IEC 60864, IEC 60865, IEC 60866, IEC 60867, IEC 60868, IEC 60869, IEC 60870, IEC 60871, IEC 60872, IEC 60873, IEC 60874, IEC 60875, IEC 60876, IEC 60877, IEC 60878, IEC 60879, IEC 60880, IEC 60881, IEC 60882, IEC 60883, IEC 60884, IEC 60885, IEC 60886, IEC 60887, IEC 60888, IEC 60889, IEC 60890, IEC 60891, IEC 60892, IEC 60893, IEC 60894, IEC 60895, IEC 60896, IEC 60897, IEC 60898, IEC 60899, IEC 60900, IEC 60901, IEC 60902, IEC 60903, IEC 60904, IEC 60905, IEC 60906, IEC 60907, IEC 60908, IEC 60909, IEC 60910, IEC 60911, IEC 60912, IEC 60913, IEC 60914, IEC 60915, IEC 60916, IEC 60917, IEC 60918, IEC 60919, IEC 60920, IEC 60921, IEC 60922, IEC 60923, IEC 60924, IEC 60925, IEC 60926, IEC 60927, IEC 60928, IEC 60929, IEC 60930, IEC 60931, IEC 60932, IEC 60933, IEC 60934, IEC 60935, IEC 60936, IEC 60937, IEC 60938, IEC 60939, IEC 60940, IEC 60941, IEC 60942, IEC 60943, IEC 60944, IEC 60945, IEC 60946, IEC 60947, IEC 60948, IEC 60949, IEC 60950, IEC 60951, IEC 60952, IEC 60953, IEC 60954, IEC 60955, IEC 60956, IEC 60957, IEC 60958, IEC 60959, IEC 60960, IEC 60961, IEC 60962, IEC 60963, IEC 60964, IEC 60965, IEC 60966, IEC 60967, IEC 60968, IEC 60969, IEC 60970, IEC 60971, IEC 60972, IEC 60973, IEC 60974, IEC 60975, IEC 60976, IEC 60977, IEC 60978, IEC 60979, IEC 60980, IEC 60981, IEC 60982, IEC 60983, IEC 60984, IEC 60985, IEC 60986, IEC 60987, IEC 60988, IEC 60989, IEC 60990, IEC 60991, IEC 60992, IEC 60993, IEC 60994, IEC 60995, IEC 60996, IEC 60997, IEC 60998, IEC 60999, IEC 61000, IEC 61001, IEC 61002, IEC 61003, IEC 61004, IEC 61005, IEC 61006, IEC 61007, IEC 61008, IEC 61009, IEC 61010, IEC 61011, IEC 61012, IEC 61013, IEC 61014, IEC 61015, IEC 61016, IEC 61017, IEC 61018, IEC 61019, IEC 61020, IEC 61021, IEC 61022, IEC 61023, IEC 61024, IEC 61025, IEC 61026, IEC 61027, IEC 61028, IEC 61029, IEC 61030, IEC 61031, IEC 61032, IEC 61033, IEC 61034, IEC 61035, IEC 61036, IEC 61037, IEC 61038, IEC 61039, IEC 61040, IEC 61041, IEC 61042, IEC 61043, IEC 61044, IEC 61045, IEC 61046, IEC 61047, IEC 61048, IEC 61049, IEC 61050, IEC 61051, IEC 61052, IEC 61053, IEC 61054, IEC 61055, IEC 61056, IEC 61057, IEC 61058, IEC 61059, IEC 61060, IEC 61061, IEC 61062, IEC 61063, IEC 61064, IEC 61065, IEC 61066, IEC 61067, IEC 61068, IEC 61069, IEC 61070, IEC 61071, IEC 61072, IEC 61073, IEC 61074, IEC 61075, IEC 61076, IEC 61077, IEC 61078, IEC 61079, IEC 61080, IEC 61081, IEC 61082, IEC 61083, IEC 61084, IEC 61085, IEC 61086, IEC 61087, IEC 61088, IEC 61089, IEC 61090, IEC 61091, IEC 61092, IEC 61093, IEC 61094, IEC 61095, IEC 61096, IEC 61097, IEC 61098, IEC 61099, IEC 61100, IEC 61101, IEC 61102, IEC 61103, IEC 61104, IEC 61105, IEC 61106, IEC 61107, IEC 61108, IEC 61109, IEC 61110, IEC 61111, IEC 61112, IEC 61113, IEC 61114, IEC 61115, IEC 61116, IEC 61117, IEC 61118, IEC 61119, IEC 61120, IEC 61121, IEC 61122, IEC 61123, IEC 61124, IEC 61125, IEC 61126, IEC 61127, IEC 61128, IEC 61129, IEC 61130, IEC 61131, IEC 61132, IEC 61133, IEC 61134, IEC 61135, IEC 61136, IEC 61137, IEC 61138, IEC 61139, IEC 61140, IEC 61141, IEC 61142, IEC 61143, IEC 61144, IEC 61145, IEC 61146, IEC 61147, IEC 61148, IEC 61149, IEC 61150, IEC 61151, IEC 61152, IEC 61153, IEC 61154, IEC 61155, IEC 61156, IEC 61157, IEC 61158, IEC 61159, IEC 61160, IEC 61161, IEC 61162, IEC 61163, IEC 61164, IEC 61165, IEC 61166, IEC 61167, IEC 61168, IEC 61169, IEC 61170, IEC 61171, IEC 61172, IEC 61173, IEC 61174, IEC 61175, IEC 61176, IEC 61177, IEC 61178, IEC 61179, IEC 61180, IEC 61181, IEC 61182, IEC 61183, IEC 61184, IEC 61185, IEC 61186, IEC 61187, IEC 61188, IEC 61189, IEC 61190, IEC 61191, IEC 61192, IEC 61193, IEC 61194, IEC 61195, IEC 61196, IEC 61197, IEC 61198, IEC 61199, IEC 61200, IEC 61201, IEC 61202, IEC 61203, IEC 61204, IEC 61205, IEC 61206, IEC 61207, IEC 61208, IEC 61209, IEC 61210, IEC 61211, IEC 61212, IEC 61213, IEC 61214, IEC 61215, IEC 61216, IEC 61217, IEC 61218, IEC 61219, IEC 61220, IEC 61221, IEC 61222, IEC 61223, IEC 61224, IEC 61225, IEC 61226, IEC 61227, IEC 61228, IEC 61229, IEC 61230, IEC 61231, IEC 61232, IEC 61233, IEC 61234, IEC 61235, IEC 61236, IEC 61237, IEC 61238, IEC 61239, IEC 61240, IEC 61241, IEC 61242, IEC 61243, IEC 61244, IEC 61245, IEC 61246, IEC 61247, IEC 61248, IEC 61249, IEC 61250, IEC 61251, IEC 61252, IEC 61253, IEC 61254, IEC 61255, IEC 61256, IEC 61257, IEC 61258, IEC 61259, IEC 61260, IEC 61261, IEC 61262, IEC 61263, IEC 61264, IEC 61265, IEC 61266, IEC 61267, IEC 61268, IEC 61269, IEC 61270, IEC 61271, IEC 61272, IEC 61273, IEC 61274, IEC 61275, IEC 61276, IEC 61277, IEC 61278, IEC 61279, IEC 61280, IEC 61281, IEC 61282, IEC 61283, IEC 61284, IEC 61285, IEC 61286, IEC 61287, IEC 61288, IEC 61289, IEC 61290, IEC 61291, IEC 61292, IEC 61293, IEC 61294, IEC 61295, IEC 61296, IEC 61297, IEC 61298, IEC 61299, IEC 61300, IEC 61301, IEC 61302, IEC 61303, IEC 61304, IEC 61305, IEC 61306, IEC 61307, IEC 61308, IEC 61309, IEC 61310, IEC 61311, IEC 61312, IEC 61313, IEC 61314, IEC 61315, IEC 61316, IEC 61317, IEC 61318, IEC 61319, IEC 61320, IEC 61321, IEC 61322, IEC 61323, IEC 61324, IEC 61325, IEC 61326, IEC 61327, IEC 61328, IEC 61329, IEC 61330, IEC 61331, IEC 61332, IEC 61333, IEC 61334, IEC 61335, IEC 61336, IEC 61337, IEC 61338, IEC 61339, IEC 61340, IEC 61341, IEC 61342, IEC 61343, IEC 61344, IEC 61345, IEC 61346, IEC 61347, IEC 61348, IEC 61349, IEC 61350, IEC 61351, IEC 61352, IEC 61353, IEC 61354, IEC 61355, IEC 61356, IEC 61357, IEC 61358, IEC 61359, IEC 61360, IEC 61361, IEC 61362, IEC 61363, IEC 61364, IEC 61365, IEC 61366, IEC 61367, IEC 61368, IEC 61369, IEC 61370, IEC 61371, IEC 61372, IEC 61373, IEC 61374, IEC 61375, IEC 61376, IEC 61377, IEC 61378, IEC 61379, IEC 61380, IEC 61381, IEC 61382, IEC 61383, IEC 61384, IEC 61385, IEC 61386, IEC 61387, IEC 61388, IEC 6



Technical Specifications

Technical Data

Product Family:	Valve Connectors
Product Sub Family:	GDM Standard
Brand:	Hirschmann
Connector Type:	Field attachable
Type of Contact / Gender:	Female
Connector Design:	Angled
Number of Pins:	3+PE (PE across cable outlet)
Coding:	A
Shielding:	Unshielded
Attachment Type:	Central Screw
Rated Voltage (UL):	300 V
Rated Voltage (CSA):	300 V
Rated Impulse Voltage:	4.0 kV
Operating Voltage:	230 V AC/DC
Rated Current*:	10 A
Rated Current (UL)*:	10 A
Rated Current (CSA)*:	8 A
Contact Resistance:	≤ 10 mOhm
Insulation Resistance:	> 10 ⁹ Ohm
Mating Cycles:	≤ 50
Type of Connection:	Screw
Cable Gland:	PG9 with strain relief
Conductor Cross Section:	0.25 - 1.5 mm ²
Strain-Relief:	Clamping Cage
Suitable Cables:	Ø 6 - 8 mm
Ambient Temperature (Operation)*:	-40 °C - +125 °C
Operating Temperature (UL):	max. + 75 °C
Operating Temperature (CSA):	max. + 75 °C
Protection Degree / IP Rating**:	IP65, IP67
Design Standard:	DIN EN 175301-803-A, ISO 4400
Pollution Degree:	3 acc. to DIN EN 60664-1 (VDE 0110-1)
Clearance / Creepage Distance:	DIN EN 60664-1 (2008/01); VDE 0110-1
Overvoltage Category:	III acc. to DIN EN 60664-1 (VDE 0110-1)

Materials

Contact Base Material:	CuZn
Contact Plating:	Cu/Sn
Contact Bearer Material:	PA GF
Contact Bearer Color:	black

Flammability Class (Contact Bearer):	UL 94 HB
Housing Material:	PA GF
Housing Color:	Black (cURus)
Flammability Class (Housing):	UL 94 5VA
Cable Gland Material:	PA GF
Cable Gland Gasket:	NBR
Cable Gland Color:	Black
Strain-Relief Material:	PA GF
Attachment Material:	Steel, Phillips combi slot
Gasket Material:	NBR Captive

Additional Technical Data

Fastening Torque (Contact Screw):	M3: (25-30) Ncm
Fastening Torque (Cable Gland):	(150-200) Ncm
Fastening Torque (Attachment):	(50-60) Ncm

Approvals

UL-File:	E315587
UL:	UL 2238; cURus
VDE:	yes
SEV:	yes

Safety & Environmental Compliance

RoHS Compliant:	yes
-----------------	-----

Notes

Note Derating:	Notice derating
Protection Degree / IP Rating Note:	** only if mounted and locked in combination with Hirschmann / Lumberg Automation connector.
Note:	Do not connect or disconnect under load.

Variants

Item #	Item Description
18060	GDM31AL-A0U-1KD

© 2025 Belden, Inc

All Rights Reserved.

Although Belden makes every reasonable effort to ensure their accuracy at the time of this publication, information and specifications described here in are subject to error or omission and to change without notice, and the listing of such information and specifications does not ensure product availability.

Belden provides the information and specifications herein on an "ASIS" basis, with no representations or warranties, whether express, statutory or implied. In no event will Belden be liable for any damages (including consequential, indirect, incidental, special, punitive, or exemplary damages) whatsoever, even if Belden has been advised of the possibility of such damages, whether in an action under contract, negligence or any other theory, arising out of or in connection with the use, or inability to use, the information or specifications described herein.

All sales of Belden products are subject to Belden's standard terms and conditions of sale.

Belden believes this product to be in compliance with all applicable environmental programs as listed in the data sheet. The information provided is correct to the best of Belden's knowledge, information and belief at the date of its publication. This information is designed only as a general guide for the safe handling, storage, and any other operation of the product itself or the one that it becomes a part of. The Product Disclosure is not to be considered a warranty or quality specification. Regulatory information is for guidance purposes only. Product users are responsible for determining the applicability of legislation and regulations based on their individual usage of the product.