

Product: [GDM21F6-L14-10D](#)

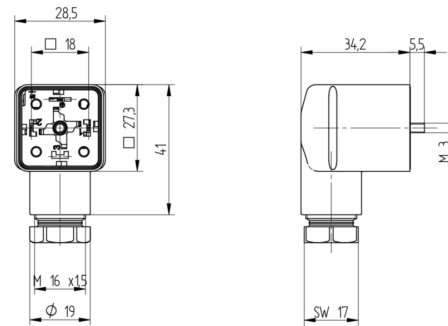
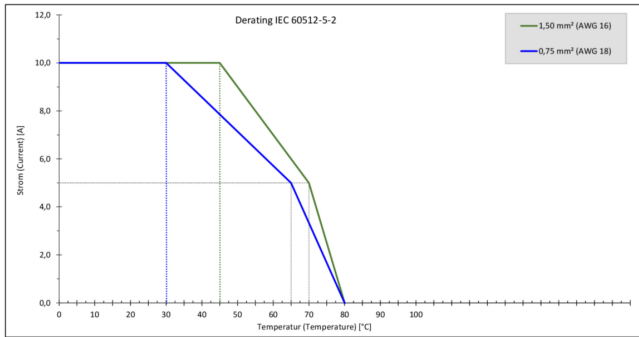


GDM Standard DIN Standard Field Attachable Connector: Form A, 3-pin (2+1PE; PE across cable outlet), transparent housing, screw type, M16; with yellow LED, 24 V AC/DC, 10 A

Product Description

GDM Standard DIN Standard Field Attachable Connector: Form A, 3-pin (2+1PE; PE across cable outlet), transparent housing, screw type, M16; with yellow LED, 24 V AC/DC, 10 A

Technical Drawing



Montageanleitung

Ventilsteckverbinder

GDM

DIN EN 175305-403

PEL, IP 67

Kabelquerschnitt: 6,0 bis 8,0 mm² / 8,0 bis 30,0 mm²
Leitungsquerschnitt: AWG 22 – AWG 14

Achtung!
Steckverbinder nicht unter Last oder Spannung stecken / werten!

Bei Vorhandensein des Druckluft- oder Vakuumanschlusses ist die Installation nicht zulässig. Bei Vorhandensein des Druckluft- oder Vakuumanschlusses ist die Installation nicht zulässig. Bei Vorhandensein des Druckluft- oder Vakuumanschlusses ist die Installation nicht zulässig.

Wissen:
Bei Vorhandensein des Druckluft- oder Vakuumanschlusses ist die Installation nicht zulässig. Bei Vorhandensein des Druckluft- oder Vakuumanschlusses ist die Installation nicht zulässig.

Technische Merkmale

Dieser Ventilstückverbinder ist ein einseitig zu montierendes Bauteil, das an einem Ventilstückverbinder montiert werden kann. Das Bauteil ist aus Kunststoff gefertigt und ist für die Verwendung in der Luft- und Raumfahrt geeignet. Das Bauteil ist für die Verwendung in der Luft- und Raumfahrt geeignet.

Material: Kunststoff (PEL, IP 67)

Lebensdauer: 10 Jahre

Temperaturbereich: -40 °C bis +125 °C

Druckbereich: 0 bis 10 bar

Vakuumbereich: 0 bis 10 mbar

Lebensdauer: 10 Jahre

Temperaturbereich: -40 °C bis +125 °C

Druckbereich: 0 bis 10 bar

Vakuumbereich: 0 bis 10 mbar

Montage

1. Lebensdauerprüfung, Lebensdauerprüfung / Anweisung

GDM-Modell	Stückzahl	Lebensdauer [h]	Anweisung
GDM21F6-L14-10D	10	1000	1000 h
GDM21F6-L14-10D	10	1000	1000 h
GDM21F6-L14-10D	10	1000	1000 h
GDM21F6-L14-10D	10	1000	1000 h
GDM21F6-L14-10D	10	1000	1000 h
GDM21F6-L14-10D	10	1000	1000 h

2. Lebensdauerprüfung, Lebensdauerprüfung / Anweisung

GDM-Modell	Stückzahl	Lebensdauer [h]	Anweisung
GDM21F6-L14-10D	10	1000	1000 h
GDM21F6-L14-10D	10	1000	1000 h
GDM21F6-L14-10D	10	1000	1000 h
GDM21F6-L14-10D	10	1000	1000 h
GDM21F6-L14-10D	10	1000	1000 h
GDM21F6-L14-10D	10	1000	1000 h

3. Lebensdauerprüfung, Lebensdauerprüfung / Anweisung

GDM-Modell	Stückzahl	Lebensdauer [h]	Anweisung
GDM21F6-L14-10D	10	1000	1000 h
GDM21F6-L14-10D	10	1000	1000 h
GDM21F6-L14-10D	10	1000	1000 h
GDM21F6-L14-10D	10	1000	1000 h
GDM21F6-L14-10D	10	1000	1000 h
GDM21F6-L14-10D	10	1000	1000 h

4. Lebensdauerprüfung, Lebensdauerprüfung / Anweisung

GDM-Modell	Stückzahl	Lebensdauer [h]	Anweisung
GDM21F6-L14-10D	10	1000	1000 h
GDM21F6-L14-10D	10	1000	1000 h
GDM21F6-L14-10D	10	1000	1000 h
GDM21F6-L14-10D	10	1000	1000 h
GDM21F6-L14-10D	10	1000	1000 h
GDM21F6-L14-10D	10	1000	1000 h

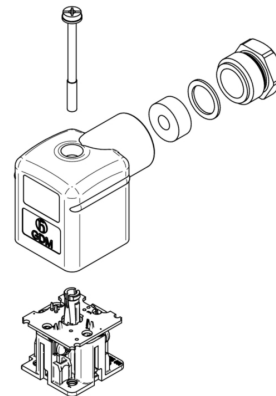
5. Crimp Kontakte für Lebensdauerprüfung: Druckluft- und Vakuumanschlüsse

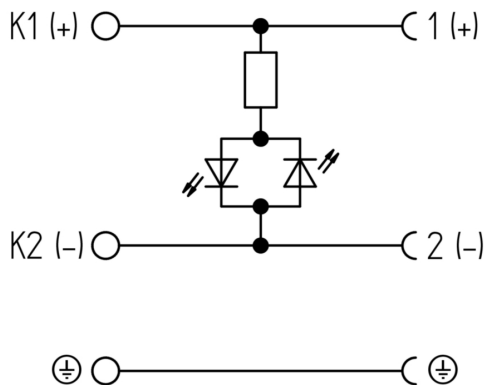
Typ	Lebensdauer [h]	Anweisung
Typ 1 <td>1000</td> <td>1000 h</td>	1000	1000 h
Typ 2 <td>1000</td> <td>1000 h</td>	1000	1000 h
Typ 3 <td>1000</td> <td>1000 h</td>	1000	1000 h
Typ 4 <td>1000</td> <td>1000 h</td>	1000	1000 h
Typ 5 <td>1000</td> <td>1000 h</td>	1000	1000 h
Typ 6 <td>1000</td> <td>1000 h</td>	1000	1000 h

400-400-000-00-000000

400-400-000-00-000000

400-400-000-00-000000





Technical Specifications

Product Life Cycle

Availability:	Active
---------------	--------

Technical Data

Product Family:	Valve Connectors
Product Sub Family:	GDM Standard
Brand:	Hirschmann
Connector Type:	Field attachable
Type of Contact / Gender:	Female
Connector Design:	Angled
Number of Pins:	2+PE (PE across cable outlet)
Coding:	A
Shielding:	Unshielded
Attachment Type:	Central Screw
Replacement for:	ID: 934412003 Name: GDML 2016 LED 24 grau (Yellow LED instead of Red LED)
Rated Voltage:	24 V
Rated Impulse Voltage:	4.0 kV (PCBA 2.0 kV)
Operating Voltage:	24 V AC/DC
Rated Current*:	10 A
Contact Resistance:	≤ 10 mOhm
Insulation Resistance:	> 10 ⁹ Ohm
Mating Cycles:	≤ 50
Type of Connection:	Screw
Cable Gland:	M16
Conductor Cross Section:	0.25 - 1.5 mm ²
Suitable Cables:	Ø 4.5 - 9 mm
Ambient Temperature (Operation)*:	-25°C to +80°C
Protection Degree / IP Rating**:	IP65
Design Standard:	DIN EN 175301-803-A, ISO 4400
Pollution Degree:	3 acc. to DIN EN 60664-1 (VDE 0110-1)
Clearance / Creepage Distance:	DIN EN 60664-1 (2008/01); VDE 0110-1
Overvoltage Category:	III acc. to DIN EN 60664-1 (VDE 0110-1)

Materials

Contact Base Material:	CuZn
Contact Plating:	Cu/Sn
Contact Bearer Material:	PA GF
Contact Bearer Color:	Black
Flammability Class (Contact Bearer):	UL 94 HB
Housing Material:	PA GF

Housing Color:	Translucent
Flammability Class (Housing):	UL 94 HB
Cable Gland Material:	PA GF
Cable Gland Gasket:	NBR
Cable Gland Color:	Black
Attachment Material:	Steel, Phillips combi slot
Gasket Material:	Sold separately

Protection Circuitry

Function Indicator:	Yellow LED
---------------------	------------

Additional Technical Data

Fastening Torque (Contact Screw):	(40-50) Ncm for conductor size 0.5 - 1.5 mm²; (30-40) Ncm for conductor size 0.34 mm²; (25-30) Ncm for conductor size 0.25 mm²
Fastening Torque (Cable Gland):	(250-375) Ncm
Fastening Torque (Attachment):	(50-60) Ncm

Approvals

VDE:	Yes
SEV:	Yes

Safety & Environmental Compliance

RoHS Compliant:	Yes
-----------------	-----

Notes

Note Derating:	Notice derating
Protection Degree / IP Rating Note:	Protection Degree and IP Rating per test standard IEC 60529 using a Hirschmann / Lumberg Automation mating product
Note:	Do not connect or disconnect under load.

Variants

Item #	Item Description	Central Screw	Gasket	Packaging	Replacement For
934888017	GDM21F6-L14-10D	1- Steel Screw, Combi Head	0 - Sold Separately	D - Collect packaging 50 pieces, assembled	ID: 934413002 Name: GDML 2016 LED 24 YE bk

© 2025 Belden, Inc
All Rights Reserved.

Although Belden makes every reasonable effort to ensure their accuracy at the time of this publication, information and specifications described here in are subject to error or omission and to change without notice, and the listing of such information and specifications does not ensure product availability.

Belden provides the information and specifications herein on an "ASIS" basis, with no representations or warranties, whether express, statutory or implied. In no event will Belden be liable for any damages (including consequential, indirect, incidental, special, punitive, or exemplary damages) whatsoever, even if Belden has been advised of the possibility of such damages, whether in an action under contract, negligence or any other theory, arising out of or in connection with the use, or inability to use, the information or specifications described herein.

All sales of Belden products are subject to Belden's standard terms and conditions of sale.

Belden believes this product to be in compliance with all applicable environmental programs as listed in the data sheet. The information provided is correct to the best of Belden's knowledge, information and belief at the date of its publication. This information is designed only as a general guide for the safe handling, storage, and any other operation of the product itself or the one that it becomes a part of. The Product Disclosure is not to be considered a warranty or quality specification. Regulatory information is for guidance purposes only. Product users are responsible for determining the applicability of legislation and regulations based on their individual usage of the product.