

Product: [GDM21AL-AOU-10E](#)

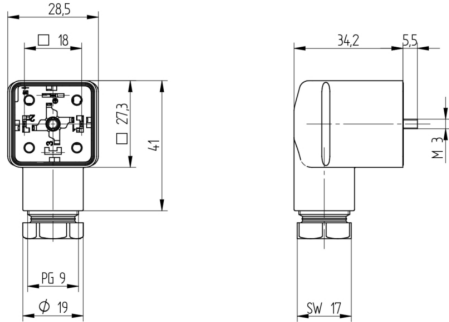


GDM Standard DIN Standard Field Attachable Connector: Form A, 3-pin (2+1PE; PE across cable outlet), UL 2238, black housing, screw type, PG9 with strain relief; without circuitry, 230 V AC/DC, 10 A

Product Description

GDM Standard DIN Standard Field Attachable Connector: Form A, 3-pin (2+1PE; PE across cable outlet), UL 2238, black housing, screw type, PG9 with strain relief, without circuitry, 230 V AC/DC, 10 A

Technical Drawing



Montageanleitung Ventillösventilrührer

BELDEN

GDM

DIN EN 175305-803

PG9, 10/7

Kabelspezifikation
Kabeldurchmesser: 0,5 bis 0,8 mm (SD) bis 30,0 mm
Leitungsquerschnitt: AWG 20 – AWG 14

Achtung!
Steckerbinder nicht unter Last oder Spannung stecken / remove!

Einbauhinweise

Wichtig

1. Leitungsbezeichnung, Kabelkennzeichnung / Anzeigensystem

2. Schutzkategorie
Überspannung / Anzeigensystem / Elektr. Werte

3. Betriebskategorie-Angebot

4. Leitung Adress, Adressierung

Optionen für die Verwendung einer Adressierbar-Lösung

5. Comp. Standard für Leitungsbezeichnung GDM A01

6. Kabelkennung / Falschmeldung der Adress

7. Einbauhinweise

8. Einbauhinweise

9. Einbauhinweise

10. Einbauhinweise

11. Einbauhinweise

12. Einbauhinweise

13. Einbauhinweise

14. Einbauhinweise

15. Einbauhinweise

16. Einbauhinweise

17. Einbauhinweise

18. Einbauhinweise

19. Einbauhinweise

20. Einbauhinweise

21. Einbauhinweise

22. Einbauhinweise

23. Einbauhinweise

24. Einbauhinweise

25. Einbauhinweise

26. Einbauhinweise

27. Einbauhinweise

28. Einbauhinweise

29. Einbauhinweise

30. Einbauhinweise

31. Einbauhinweise

32. Einbauhinweise

33. Einbauhinweise

34. Einbauhinweise

35. Einbauhinweise

36. Einbauhinweise

37. Einbauhinweise

38. Einbauhinweise

39. Einbauhinweise

40. Einbauhinweise

41. Einbauhinweise

42. Einbauhinweise

43. Einbauhinweise

44. Einbauhinweise

45. Einbauhinweise

46. Einbauhinweise

47. Einbauhinweise

48. Einbauhinweise

49. Einbauhinweise

50. Einbauhinweise

51. Einbauhinweise

52. Einbauhinweise

53. Einbauhinweise

54. Einbauhinweise

55. Einbauhinweise

56. Einbauhinweise

57. Einbauhinweise

58. Einbauhinweise

59. Einbauhinweise

60. Einbauhinweise

61. Einbauhinweise

62. Einbauhinweise

63. Einbauhinweise

64. Einbauhinweise

65. Einbauhinweise

66. Einbauhinweise

67. Einbauhinweise

68. Einbauhinweise

69. Einbauhinweise

70. Einbauhinweise

71. Einbauhinweise

72. Einbauhinweise

73. Einbauhinweise

74. Einbauhinweise

75. Einbauhinweise

76. Einbauhinweise

77. Einbauhinweise

78. Einbauhinweise

79. Einbauhinweise

80. Einbauhinweise

81. Einbauhinweise

82. Einbauhinweise

83. Einbauhinweise

84. Einbauhinweise

85. Einbauhinweise

86. Einbauhinweise

87. Einbauhinweise

88. Einbauhinweise

89. Einbauhinweise

90. Einbauhinweise

91. Einbauhinweise

92. Einbauhinweise

93. Einbauhinweise

94. Einbauhinweise

95. Einbauhinweise

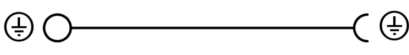
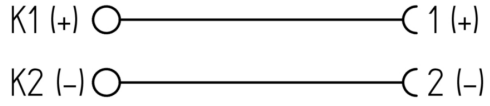
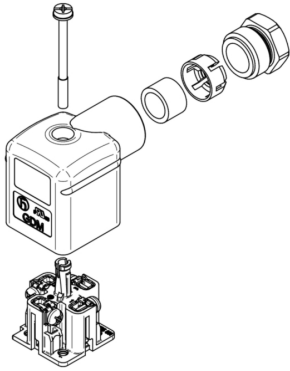
96. Einbauhinweise

97. Einbauhinweise

98. Einbauhinweise

99. Einbauhinweise

100. Einbauhinweise





Technical Specifications

Technical Data

Product Family:	Valve Connectors
Product Sub Family:	GDM Standard
Brand:	Hirschmann
Connector Type:	Field attachable
Type of Contact / Gender:	Female
Connector Design:	Angled
Number of Pins:	2+PE (PE across cable outlet)
Coding:	A
Shielding:	Unshielded
Attachment Type:	Central Screw
Replacement for:	ID: 931236106 Name: GDM 2009 J GRAU (Black Housing instead of Grey)
Rated Voltage (UL):	300 V
Rated Voltage (CSA):	300 V
Rated Impulse Voltage:	4.0 kV
Operating Voltage:	230 V AC/DC
Rated Current*:	10 A
Rated Current (UL)*:	10 A
Rated Current (CSA)*:	8 A
Contact Resistance:	≤ 10 mOhm
Insulation Resistance:	> 10 ⁹ Ohm
Mating Cycles:	≤ 50
Type of Connection:	Screw
Cable Gland:	PG9 with strain relief
Conductor Cross Section:	0.25 - 1.5 mm ²
Strain-Relief:	Clamping Cage
Suitable Cables:	Ø 6 - 8 mm
Ambient Temperature (Operation)*:	-40 °C - +125 °C
Operating Temperature (UL):	max. + 75 °C
Operating Temperature (CSA):	max. + 75 °C
Protection Degree / IP Rating**:	IP65, IP67
Design Standard:	DIN EN 175301-803-A, ISO 4400
Pollution Degree:	3 acc. to DIN EN 60664-1 (VDE 0110-1)
Clearance / Creepage Distance:	DIN EN 60664-1 (2008/01); VDE 0110-1
Overvoltage Category:	III acc. to DIN EN 60664-1 (VDE 0110-1)

Materials

Contact Base Material:	CuZn
Contact Plating:	Cu/Sn
Contact Bearer Material:	PA GF
Contact Bearer Color:	black
Flammability Class (Contact Bearer):	UL 94 HB
Housing Material:	PA GF
Housing Color:	Black (cURus)
Flammability Class (Housing):	UL 94 5VA

Cable Gland Material:	PA GF
Cable Gland Gasket:	NBR
Cable Gland Color:	Black
Strain-Relief Material:	PA GF
Attachment Material:	Steel, Philips combi slot
Gasket Material:	Sold separately

Additional Technical Data

Fastening Torque (Contact Screw):	M3: (25-30) Ncm
Fastening Torque (Cable Gland):	(150-200) Ncm
Fastening Torque (Attachment):	(50-60) Ncm

Approvals

UL-File:	E315587
UL:	UL 2238; cURus
VDE:	yes
SEV:	yes

Safety & Environmental Compliance

RoHS Compliant:	yes
-----------------	-----

Notes

Note Derating:	Notice derating
Protection Degree / IP Rating Note:	** only if mounted and locked in combination with Hirschmann / Lumberg Automation connector.
Note:	Do not connect or disconnect under load.

Variants

Item #	Item Description	Replacement For
934888112	GDM21AL-A0U-10F	ID: 931236106 Name: GDM 2009 J GRAU (Black Housing instead of Grey)

© 2024 Belden, Inc

All Rights Reserved.

Although Belden makes every reasonable effort to ensure their accuracy at the time of this publication, information and specifications described here in are subject to error or omission and to change without notice, and the listing of such information and specifications does not ensure product availability.

Belden provides the information and specifications herein on an "ASIS" basis, with no representations or warranties, whether express, statutory or implied. In no event will Belden be liable for any damages (including consequential, indirect, incidental, special, punitive, or exemplary damages) whatsoever, even if Belden has been advised of the possibility of such damages, whether in an action under contract, negligence or any other theory, arising out of or in connection with the use, or inability to use, the information or specifications described herein.

All sales of Belden products are subject to Belden's standard terms and conditions of sale.

Belden believes this product to be in compliance with all applicable environmental programs as listed in the data sheet. The information provided is correct to the best of Belden's knowledge, information and belief at the date of its publication. This information is designed only as a general guide for the safe handling, storage, and any other operation of the product itself or the one that it becomes a part of. The Product Disclosure is not to be considered a warranty or quality specification. Regulatory information is for guidance purposes only. Product users are responsible for determining the applicability of legislation and regulations based on their individual usage of the product.