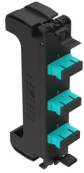




**Product:** [FX ECX Frame OM3 SD](#)

FX ECX Frame OM3 SC Duplex



### Product Description

FX ECX Frame OM3 SC Duplex. Available in several port counts.

### Technical Specifications

#### Product Overview

Environmental Space:	Indoor
Suitable Applications:	FiberExpress Solutions, Backbone, Telecommunications Room, Main Distribution Room, Data Centers

#### Construction

##### Fiber Cable Construction

Fiber Type	OM3
Weight:	0.2 lbs
Height:	1.3 in
Width:	6.34 in
Length:	2.890 in
Depth:	1.39 in

#### Physical Specifications

##### Max Capacity Table

	Quantity of Frames/Cassettes	Quantity of LC Duplex Connectors
FX UHD Frames/Cassettes	6 Fibers	3 SC Duplex Ports

#### Mechanical Characteristics

Front Connection:	Static
-------------------	--------

#### Temperature Range

Operating Temperature Range:	-10 to 60°C
Storage Temperature Range:	-10 to 75°C

#### Product Material

##### Materials

Description	Material	Color	Type
Adapter Sleeve	Zirconia-Ceramic		
Front Connector Body	Plastic - UL94V-0	Aqua	SC-Duplex
Frame	Plastic - UL94V-0	Black	
Frame Brace Support	Plastic - UL94V-0	Black	

#### Standards

MII Order #39 (China RoHS):	EUP 50
-----------------------------	--------

## Related Part Numbers

Included Parts:	Dust Caps
Related Parts:	FX ECX Panels, FX Pigtailed, FX Brilliance

## Variants

Item #	Color	Connector Type	Port Count
FF3X03SD	Aqua	SC Duplex	3 Port
FF3X06SD	Aqua	SC Duplex	6 Port
FF3X08SD	Aqua	SC Duplex	8 Port

## Product Notes

Packaging:	Individually packaged in a plastic shell. Shipped in cardboard box (12/box)
Notes:	For additional information about this product, please contact our Technical Support group (ibdn.ts@belden.com) or your local sales representative.

## History

Update and Revision:	Revision Number: 0.49 Revision Date: 08-16-2023
----------------------	---

© 2024 Belden, Inc

All Rights Reserved.

Although Belden makes every reasonable effort to ensure their accuracy at the time of this publication, information and specifications described here in are subject to error or omission and to change without notice, and the listing of such information and specifications does not ensure product availability.

Belden provides the information and specifications herein on an "ASIS" basis, with no representations or warranties, whether express, statutory or implied. In no event will Belden be liable for any damages (including consequential, indirect, incidental, special, punitive, or exemplary damages) whatsoever, even if Belden has been advised of the possibility of such damages, whether in an action under contract, negligence or any other theory, arising out of or in connection with the use, or inability to use, the information or specifications described herein.

All sales of Belden products are subject to Belden's standard terms and conditions of sale.

Belden believes this product to be in compliance with all applicable environmental programs as listed in the data sheet. The information provided is correct to the best of Belden's knowledge, information and belief at the date of its publication. This information is designed only as a general guide for the safe handling, storage, and any other operation of the product itself or the one that it becomes a part of. The Product Disclosure is not to be considered a warranty or quality specification. Regulatory information is for guidance purposes only. Product users are responsible for determining the applicability of legislation and regulations based on their individual usage of the product.