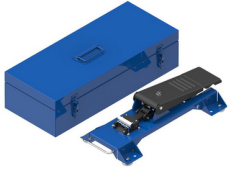




Product: [FRTS3](#)



Fiber Raceway Slotting Tool - Foot Operated with Case

Product Description

Fiber Raceway Slotting Tool - Foot Operated Tool with Carrying Case

Technical Specifications

Product Overview

Environmental Space:	Indoor
----------------------	--------

Construction

Weight:	30.864 lbs
Height:	8.464 in (214.986 mm)
Width:	12.204 in
Length:	24.015 in

Product Material

Materials

Material
Steel

Related Part Numbers

Variants

Item #	Color	Length
FRTS3	Metallic	24.015 in

Product Notes

Notes:	The foot operated duct slotting tool is a means of making duct end slots, easily, accurately and quickly i.e. less than 1 minute to slot one end of a duct. By using a foot operated system a small effort is required to exert the large force necessary to make a slot. Both hands are free to hold the duct. The jaws are made of hardened carbon steel, for a long service life. To operate, place duct side or end, within the tools cutting guides, hold duct down flush with top face of tool, and press foot operated lever, until a slot is made. Release the slotting punch, using the foot operated release pedal. Remove and reposition duct for next slot. The slotting tool cuts a slot in the duct end to suit a standard joiner; available separately. The kit includes one foot operated slotting tool and a metal tool box, for storage and transport, c/w a foam insert.
--------	---

History

Update and Revision:	Revision Number: 0.31 Revision Date: 03-28-2024
----------------------	---

© 2025 Belden, Inc

All Rights Reserved.

Although Belden makes every reasonable effort to ensure their accuracy at the time of this publication, information and specifications described here in are subject to error or omission and to change without notice, and the listing of such information and specifications does not ensure product availability.

Belden provides the information and specifications herein on an "ASIS" basis, with no representations or warranties, whether express, statutory or implied. In no event will Belden be liable for any damages (including consequential, indirect, incidental, special, punitive, or exemplary damages) whatsoever, even if Belden has been advised of the possibility of such damages, whether in an action under contract, negligence or any other theory, arising out of or in connection with the use, or inability to use, the information or specifications described herein.

All sales of Belden products are subject to Belden's standard terms and conditions of sale.

Belden believes this product to be in compliance with all applicable environmental programs as listed in the data sheet. The information provided is correct to the best of Belden's knowledge, information and belief at the date of its publication. This information is designed only as a general guide for the safe handling, storage, and any other operation of the product itself or the one that it becomes a part of. The Product Disclosure is not to be considered a warranty or quality specification. Regulatory information is for guidance purposes only. Product users are responsible for determining the applicability of legislation and regulations based on their individual usage of the product.