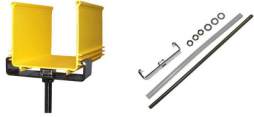




Product: [FRMS2](#)



Fiber Raceway Mounting Stand Off Kit, 100mm

Product Description

Fiber Raceway Mounting Stand Off Kit, Suits 100mm Duct

Technical Specifications

Product Overview

Environmental Space:	Indoor
----------------------	--------

Construction

Weight:	1.322 lbs
Height:	1.181 in (29.997 mm)
Width:	1.574 in
Length:	4.960 in

Product Material

Materials

Material
Mild steel

Related Part Numbers

Variants

Item #	Color	Length
FRMS2	Metallic	4.960 in

Product Notes

Notes:	The mounting bracket provides an adjustable mounting mechanism for the 220 mm plastic ducting system. It is basically an M12 threaded metal rod and support bracket that connects straight duct to existing building steel - work. A plastic protection tube is included to prevent optical fibres catching in the rod thread.
--------	--

History

Update and Revision:	Revision Number: 0.72 Revision Date: 03-28-2024
----------------------	---

© 2025 Belden, Inc

All Rights Reserved.

Although Belden makes every reasonable effort to ensure their accuracy at the time of this publication, information and specifications described here in are subject to error or omission and to change without notice, and the listing of such information and specifications does not ensure product availability.

Belden provides the information and specifications herein on an "ASIS" basis, with no representations or warranties, whether express, statutory or implied. In no event will Belden be liable for any damages (including consequential, indirect, incidental, special, punitive, or exemplary damages) whatsoever, even if Belden has been advised of the possibility of such damages, whether in an action under contract, negligence or any other theory, arising out of or in connection with the use, or inability to use, the information or specifications described herein.

All sales of Belden products are subject to Belden's standard terms and conditions of sale.

Belden believes this product to be in compliance with all applicable environmental programs as listed in the data sheet. The information provided is correct to the best of Belden's knowledge, information and belief at the date of its publication. This information is designed only as a general guide for the safe handling, storage, and any other operation of the product itself or the one that it becomes a part of. The Product Disclosure is not to be considered a warranty or quality specification. Regulatory information is for guidance purposes only. Product users are responsible for determining the applicability of legislation and regulations based on their individual usage of the product.