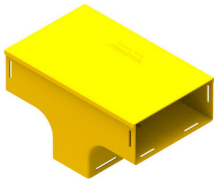




Product: [FRCV4YLN](#)



Fiber Raceway Vertical Tee, 4x8, Lid, Standard

Product Description

Fiber Raceway Vertical Tee, 4x8, 220mm x 100mm Drop Off, Lid, Yellow, Standard

Technical Specifications

Product Overview

Environmental Space:	Indoor
----------------------	--------

Construction

Weight:	2.061 lbs
Height:	8.070 in (204.978 mm)
Width:	14.566 in
Length:	9.133 in

Product Material

Materials

Material
Fire retardant plastic, Halogen free, UL94-VO rated

Related Part Numbers

Variants

Item #	Color	Length
FRCV4YLN	Yellow	9.133 in

Product Notes

Notes:	The entry suite is basically a 100mm vertical drop off point in a 220mm horizontal duct system. This is usually installed where a large number of optical fibre cords are to be dropped off below. eg. in optical fibre distribution frames. It provides free flow for the ongoing fibres and strain relief for those exiting down the 100mm vertical section. There are two 220mm horizontal outlets, which use standard joiners or a slotless joiner and a 100mm vertical outlet that uses a standard joiner or a slotless joiner. These are available separately.
--------	--

History

Update and Revision:	Revision Number: 0.72 Revision Date: 03-28-2024
----------------------	---

© 2024 Belden, Inc
All Rights Reserved.

Although Belden makes every reasonable effort to ensure their accuracy at the time of this publication, information and specifications described here in are subject to error or omission and to change without notice, and the listing of such information and specifications does not ensure product availability.

Belden provides the information and specifications herein on an "ASIS" basis, with no representations or warranties, whether express, statutory or implied. In no event will Belden be liable for any damages (including consequential, indirect, incidental, special, punitive, or exemplary damages) whatsoever, even if Belden has been advised of the possibility of such damages, whether in an action under contract, negligence or any other theory, arising out of or in connection with the use, or inability to use, the information or specifications described herein.

All sales of Belden products are subject to Belden's standard terms and conditions of sale.

Belden believes this product to be in compliance with all applicable environmental programs as listed in the data sheet. The information provided is correct to the best of Belden's knowledge, information and belief at the date of its publication. This information is designed only as a general guide for the safe handling, storage, and any other operation of the product itself or the one that it becomes a part of. The Product Disclosure is not to be considered a warranty or quality specification. Regulatory information is for guidance purposes only. Product users are responsible for determining the applicability of legislation and regulations based on their individual usage of the product.