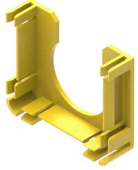




Product: [FRAE1YC](#)



Fiber Raceway End Cap, 2x2, with 38mm Slot

Product Description

Fiber Raceway End Cap, 2x2, with 38mm Slot, Yellow

Technical Specifications

Product Overview

Environmental Space:	Indoor
----------------------	--------

Construction

Weight:	0.055 lbs
Height:	1.850 in (46.990 mm)
Width:	0.551 in
Length:	2.362 in

Product Material

Materials

Material
Fire retardant plastic, Halogen free, UL94-VO rated

Related Part Numbers

Variants

Item #	Color	Length
FRAE1YC	Yellow	2.362 in

Product Notes

Notes:	The duct end cover is provided with a 38mm dia cut out, that allows fitting of a convoluted, flexible tube 32mm ID/38mm OD. This convoluted tube allows optical fibre cords to be dropped off from the duct to lower transmission equipment. The end cover is also used for sealing the open end of a standard 50mm straight duct. It snaps simply into the duct slots and can be removed with a screwdriver should the system need Extending.
--------	--

History

Update and Revision:	Revision Number: 0.135 Revision Date: 03-28-2024
----------------------	--

© 2025 Belden, Inc

All Rights Reserved.

Although Belden makes every reasonable effort to ensure their accuracy at the time of this publication, information and specifications described here in are subject to error or omission and to change without notice, and the listing of such information and specifications does not ensure product availability.

Belden provides the information and specifications herein on an "ASIS" basis, with no representations or warranties, whether express, statutory or implied. In no event will Belden be liable for any damages (including consequential, indirect, incidental, special, punitive, or exemplary damages) whatsoever, even if Belden has been advised of the possibility of such damages, whether in an action under contract, negligence or any other theory, arising out of or in connection with the use, or inability to use, the information or specifications described herein.

All sales of Belden products are subject to Belden's standard terms and conditions of sale.

Belden believes this product to be in compliance with all applicable environmental programs as listed in the data sheet. The information provided is correct to the best of Belden's knowledge, information and belief at the date of its publication. This information is designed only as a general guide for the safe handling, storage, and any other operation of the product itself or the one that it becomes a part of. The Product Disclosure is not to be considered a warranty or quality specification. Regulatory information is for guidance purposes only. Product users are responsible for determining the applicability of legislation and regulations based on their individual usage of the product.