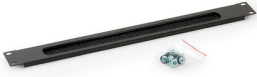




Product: [FILLER PANEL BRUSH E-SERIES](#)

EDAP33xx - Series



Product Description

Metal Filler panel with brush for E-Series.

Technical Specifications

Application

Suitable Applications:	Filler panel for 19" mounting with brushes for cable entry. Installation by using standard cage nuts (included). Installing the filler panel in the rack makes the installation look neat and tidy. Also the filler panel prevents airflow escaping to the back without passing through the active equipment.
Environmental Space:	Indoor

Environmental and Overall Characteristics

Finish:	Powder Coated
Material:	1.0 mm steel

Standards

EU Directive 2011/65/EU (RoHS 2):	Yes
MII Order #39 (China RoHS):	EUP 50

Related Part Numbers

Part Number:	EDAP3
Included Parts:	Filler panel + brush with set of 4 cage nuts
Packaging:	Individually packed.

Variants

Item #	Height	Color	Application
EDAP3312	1U	Black	E-Series Cabinets
EDAP3311	1U	Gray	E-Series Cabinets

Update and Revision:	Revision Number: 0.109 Revision Date: 10-02-2024
----------------------	--

© 2025 Belden, Inc

All Rights Reserved.

Although Belden makes every reasonable effort to ensure their accuracy at the time of this publication, information and specifications described here in are subject to error or omission and to change without notice, and the listing of such information and specifications does not ensure product availability.

Belden provides the information and specifications herein on an "ASIS" basis, with no representations or warranties, whether express, statutory or implied. In no event will Belden be liable for any damages (including consequential, indirect, incidental, special, punitive, or exemplary damages) whatsoever, even if Belden has been advised of the possibility of such damages, whether in an action under contract, negligence or any other theory, arising out of or in connection with the use, or inability to use, the information or specifications described herein.

All sales of Belden products are subject to Belden's standard terms and conditions of sale.

Belden believes this product to be in compliance with all applicable environmental programs as listed in the data sheet. The information provided is correct to the best of Belden's knowledge, information and belief at the date of its publication. This information is designed only as a general guide for the safe handling, storage, and any other operation of the product itself or the one that it becomes a part of. The Product Disclosure is not to be considered a warranty or quality specification. Regulatory information is for guidance purposes only. Product users are responsible for determining the applicability of legislation and regulations based on their individual usage of the product.