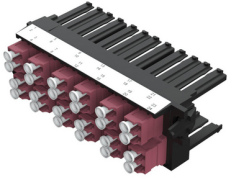




Product: [FFSU12LK](#)

FiberExpress Ultra Frame OS2 12 Ports



Product Description

FIBEREXPRESS ULTRA FRAME OS2 06 PORTS, LC DUPLEX KEYED

Technical Specifications

Product Overview

Environmental Space:	Indoor
Suitable Applications:	FiberExpress Solutions, Backbone, Telecommunications Room, Main Distribution Room, Data Centers

Construction

Weight:	0.25 lbs
Height:	1.5 in
Width:	4.46 in
Depth:	2.2 in

Mechanical Characteristics

Durabilities@Termination1:	500 Cycles
----------------------------	------------

Temperature Range

Operating Temperature Range:	-10 to 60°C
Storage Temperature Range:	-10 to 75°C

Product Material

Materials

Description	Material	Color	Type
Frame	Plastic-UL94V-0	Black	
Front Connector Body	Plastic-UL94V-0	Red	LC-Keyed Duplex
Adapter Sleeve	Zirconia Ceramic		

Standards

TIA/EIA Compliance:	TIA.568.C.3
MII Order #39 (China RoHS):	EUP 50

Related Part Numbers

Included Parts:	Dust Caps
Related Parts:	FiberExpress Ultra Patch panels, Pre-terminated MPO low loss cable assemblies

Variants

Item #	Connector Type
FFSU12LKR	LC Keyed Red
FFSU12LKG	LC Keyed Green
FFSU12LKY	LC Keyed Yellow
FFSU12LKN	LC Keyed Black
FFSU12LKO	LC Keyed Orange

FFSU12LKB	LC Keyed Blue
FFSU12LKV	LC Keyed Violet
FFSU12LKP	LC Keyed Rose
FFSU12LKA	LC Keyed Aqua
FFSU12LKM	LC Keyed Brown
FFSU12LKS	LC Keyed Gray
FFSU12LKW	LC Keyed White

Product Notes

Packaging:	Individually packaged in a plastic shell, Shipped in cardboard box (60/box)
------------	---

History

Update and Revision:	Revision Number: 0.12 Revision Date: 11-29-2023
----------------------	---

© 2024 Belden, Inc

All Rights Reserved.

Although Belden makes every reasonable effort to ensure their accuracy at the time of this publication, information and specifications described here in are subject to error or omission and to change without notice, and the listing of such information and specifications does not ensure product availability.

Belden provides the information and specifications herein on an "ASIS" basis, with no representations or warranties, whether express, statutory or implied. In no event will Belden be liable for any damages (including consequential, indirect, incidental, special, punitive, or exemplary damages) whatsoever, even if Belden has been advised of the possibility of such damages, whether in an action under contract, negligence or any other theory, arising out of or in connection with the use, or inability to use, the information or specifications described herein.

All sales of Belden products are subject to Belden's standard terms and conditions of sale.

Belden believes this product to be in compliance with all applicable environmental programs as listed in the data sheet. The information provided is correct to the best of Belden's knowledge, information and belief at the date of its publication. This information is designed only as a general guide for the safe handling, storage, and any other operation of the product itself or the one that it becomes a part of. The Product Disclosure is not to be considered a warranty or quality specification. Regulatory information is for guidance purposes only. Product users are responsible for determining the applicability of legislation and regulations based on their individual usage of the product.