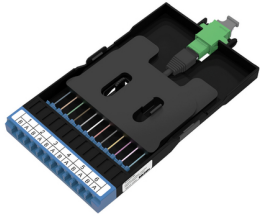




Product: [FFSD06LDMFAB](#)



FX DCX FRAME OS2 06P MPO12(F)LC_DX TYPE-A NON-FLIP BL_ADP

Product Description

FX DCX FRAME, OS2, 06 PORTS, LC DUPLEX, MPO-12 (FEMALE),TYPE-A, NON-FLIP,BLUE ADAPTERS

Technical Specifications

Product Overview

Suitable Applications:	DCX, Data Centers, Central Equipment Room
------------------------	---

Construction

Fiber Cable Construction

Fiber Type	
OS2	
Weight:	0.156 lbs
Height:	0.500 in
Width:	3.400 in
Depth:	6.800 in

Physical Specifications

Max Capacity:	12 Fibers
---------------	-----------

Temperature Range

Operating Temperature Range:	-10°C to +60°C
Storage Temperature Range:	-10°C to +75°C

Product Material

Materials

Description	Material	Color	Type
Adapter Frame Assembly	Plastic - UL94V-0	Black	
Front Connector Body	Plastic - UL94V-0	Blue	LC Duplex
Adapter Sleeve	Zirconia-Ceramic		

Transmission-Characteristics

Fiber Connector Performance

Description	Max. Insertion Loss	Min. Return Loss
LC- Keyed	0.25 dB	-65 dB
MPO-Female	0.35 dB	-60 dB

Standards

MII Order #39 (China RoHS):	EUP 50
-----------------------------	--------

Related Part Numbers

Related Parts:	DCX Frames, Modules, and Patch Panels
----------------	---------------------------------------

Product Notes

Packaging:	Individually packaged in a plastic shell, Shipped in cardboard box
------------	--

History

Update and Revision:	Revision Number: 0.61 Revision Date: 10-03-2024
----------------------	---

© 2024 Belden, Inc

All Rights Reserved.

Although Belden makes every reasonable effort to ensure their accuracy at the time of this publication, information and specifications described here in are subject to error or omission and to change without notice, and the listing of such information and specifications does not ensure product availability.

Belden provides the information and specifications herein on an "ASIS" basis, with no representations or warranties, whether express, statutory or implied. In no event will Belden be liable for any damages (including consequential, indirect, incidental, special, punitive, or exemplary damages) whatsoever, even if Belden has been advised of the possibility of such damages, whether in an action under contract, negligence or any other theory, arising out of or in connection with the use, or inability to use, the information or specifications described herein.

All sales of Belden products are subject to Belden's standard terms and conditions of sale.

Belden believes this product to be in compliance with all applicable environmental programs as listed in the data sheet. The information provided is correct to the best of Belden's knowledge, information and belief at the date of its publication. This information is designed only as a general guide for the safe handling, storage, and any other operation of the product itself or the one that it becomes a part of. The Product Disclosure is not to be considered a warranty or quality specification. Regulatory information is for guidance purposes only. Product users are responsible for determining the applicability of legislation and regulations based on their individual usage of the product.