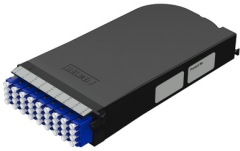




Product: [FCSH18LDFM](#)



FX UHD CASS OS2 18P W/250-R-PT, LC_DX BL_ADP

Product Description

FX UHD CASSETTE, OS2, 18 PORTS, WITH 250um RIBBON PT, LC DUPLEX, BLUE ADAPTERS

Technical Specifications

Product Overview

Environmental Space:	Indoor
Suitable Applications:	FiberExpress Solutions, Backbone, Telecommunications Room, Main Distribution Room, Data Centers

Construction

Fiber Cable Construction

Fiber Type	
OS2	
Weight:	0.500 lbs
Height:	1.500 in
Width:	4.500 in
Length:	9.080 in

Physical Specifications

Max Capacity:	36 Fibers
---------------	-----------

Mechanical Characteristics

Front Connection:	Static
-------------------	--------

Temperature Range

Operating Temperature Range:	-10°C To +60°C
Storage Temperature Range:	-10°C To +75°C

Product Material

Materials

Description	Material	Color	Type
Adapter Sleeve	Zirconia-Ceramic		
Front Connector Body	Plastic - UL94V-0	Blue	LC Duplex
Cassette Assembly	Plastic - UL94V-0	Black	

Transmission-Characteristics

Fiber Connector Performance

Connector Type	Max. Insertion Loss	Min. Return Loss
LC Duplex	0.25 dB	-55 dB

Standards

EU Directive 2011/65/EU (RoHS 2):	Yes
MII Order #39 (China RoHS):	EUP 50

Related Part Numbers

Included Parts:	250µm mass fusion pigtails, splice protection sleeve, rubber strip, and cable ties
Related Parts:	FX UHD & FXU Patch Panels

Product Notes

Packaging:	Individually packaged in a plastic shell. Shipped in cardboard box (14/box)
Notes:	Splice holders (for a total of 36 splices), 250um ribbon pigtail and splice protector are included. For additional information about this product, please contact our Technical Support group or your local sales representative.

History

Update and Revision:	Revision Number: 0.22 Revision Date: 08-07-2024
----------------------	-------------------------------------------------

© 2024 Belden, Inc

All Rights Reserved.

Although Belden makes every reasonable effort to ensure their accuracy at the time of this publication, information and specifications described here in are subject to error or omission and to change without notice, and the listing of such information and specifications does not ensure product availability.

Belden provides the information and specifications herein on an "ASIS" basis, with no representations or warranties, whether express, statutory or implied. In no event will Belden be liable for any damages (including consequential, indirect, incidental, special, punitive, or exemplary damages) whatsoever, even if Belden has been advised of the possibility of such damages, whether in an action under contract, negligence or any other theory, arising out of or in connection with the use, or inability to use, the information or specifications described herein.

All sales of Belden products are subject to Belden's standard terms and conditions of sale.

Belden believes this product to be in compliance with all applicable environmental programs as listed in the data sheet. The information provided is correct to the best of Belden's knowledge, information and belief at the date of its publication. This information is designed only as a general guide for the safe handling, storage, and any other operation of the product itself or the one that it becomes a part of. The Product Disclosure is not to be considered a warranty or quality specification. Regulatory information is for guidance purposes only. Product users are responsible for determining the applicability of legislation and regulations based on their individual usage of the product.