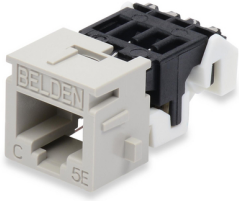




**Product:** [EZ-MDVO JACKS](#)



EZ-MDVO Modular Jack

## Product Description

EZ-MDVO Jacks are available in several colors and wiring schemes.

## Technical Specifications

### Product Overview

|                        |  |
|------------------------|--|
| Suitable Applications: | IBDN System 1200, TIA Category 5e, ISO Class D, 1000BASE-T |
|------------------------|--|

### Physical Characteristics (Overall)

|                |  |
|----------------|--|
| Height:        | 0.71 in  |
| Width:         | 0.75 in  |
| Depth:         | 1.25 in  |
| Wiring Scheme: | T568A/B  |
| Packaging:     | Individually packaged in a plastic bag. Standard pack of 50 units. |
| Weight:        | 0.013 lbs  |

### Connectors

#### Materials

| Description      | Material   | Type       |
|------------------|--|------------|
| Front Connection | Copper Alloy with 50 $\mu$ inch Gold over Nickel | Lead Frame |
| Rear Connection  | Copper Alloy with Nickel Plating                 | IDC        |
| Connector Body   | Plastic - UL940V-0                               |            |

### Electrical Characteristics

|                         |                                  |
|-------------------------|----------------------------------|
| Dielectric Strength:    | 1,000 V RMS @ 60 Hz for 1 minute |
| Current Rating:         | 1.500 A                          |
| Insulation Resistance:  | 500 M-Ohm Minimum                |
| Max Contact Resistance: | 20 mOhm                          |
| Termination Resistance: | 2.5 mOhm                         |

### Temperature Range

|                                 |                |
|---------------------------------|----------------|
| Installation Temperature Range: | -10°C To +60°C |
| Storage Temperature Range:      | -40°C To +70°C |
| Operating Temperature Range:    | -10°C To +60°C |

### Mechanical Characteristics

|  |                          |
|--|--------------------------|
| Footprint/Type:                          | MDVO                     |
| Plug /Jack Compatibility:                | RJ45, RJ11               |
| Termination Front Connection:            | Mated Connection         |
| Termination Front Connection Durability: | 1,000 cycles             |
| Termination Rear Connection:             | Gas Tight IDC Connection |
| Termination Rear Connection Durability:  | 20 terminations          |

|                               |            |
|-------------------------------|------------|
| Connector/Hardware Retention: | 20 lbs     |
| Plug/Connector Retention:     | 11.250 lbs |

#### Termination Interface

|                     |
|---------------------|
| <b>Durabilities</b> |
| 1,000 cycles        |

#### Dimensions (WxHxD)

|              |               |              |
|--------------|---------------|--------------|
| <b>Width</b> | <b>Height</b> | <b>Depth</b> |
| 0.75         | 0.71          | 1.25         |

#### Standards

|                     |   |
|---------------------|---|
| Data Category:      | Category 5e   |
| TIA/EIA Compliance: | Category 5e - TIA 568.C.2, Category 5 - ISO/IEC 11801:2002 Ed.2 |
| Other Standards:    | FCC Part 68, Subpart F, IEC 60603-7                             |

#### Applicable Environmental and Other Programs

|                                 |        |
|---------------------------------|--------|
| Environmental Space:            | Indoor |
| EU Directive 2002/95/EC (RoHS): | Yes    |
| MII Order #39 (China RoHS):     | EUP 50 |

#### Suitability

|                       |     |
|-----------------------|-----|
| Suitability - Indoor: | Yes |
|-----------------------|-----|

#### Flammability, LS0H, Toxicity Testing

|                 |                     |
|-----------------|---------------------|
| Safety Listing: | ACA, c(UL)us Listed |
|-----------------|---------------------|

#### Related Part Numbers

|                |   |
|----------------|---|
| Related Parts: | Compatible with Interface and MDVO Style Faceplates, Adapters, Boxes and Patch Panels |
|----------------|---|

#### Variants

| Item #   | Color      | Packaging   |
|----------|------------|-------------|
| AX100172 | Almond     | Single Pack |
| AX100578 | Almond     | Single Pack |
| AX100589 | Almond     | Single Pack |
| AX100646 | Almond     | Single Pack |
| AX100174 | Black      | Single Pack |
| AX100580 | Black      | Single Pack |
| AX100591 | Black      | Single Pack |
| AX100648 | Black      | Single Pack |
| AX100171 | Gray       | Single Pack |
| AX100577 | Gray       | Single Pack |
| AX100588 | Gray       | Single Pack |
| AX100645 | Gray       | Single Pack |
| AX100179 | TIA Blue   | Single Pack |
| AX100585 | TIA Blue   | Single Pack |
| AX100596 | TIA Blue   | Single Pack |
| AX100653 | TIA Blue   | Single Pack |
| AX100181 | TIA Brown  | Single Pack |
| AX100587 | TIA Brown  | Single Pack |
| AX100598 | TIA Brown  | Single Pack |
| AX100655 | TIA Brown  | Single Pack |
| AX100178 | TIA Green  | Single Pack |
| AX100584 | TIA Green  | Single Pack |
| AX100595 | TIA Green  | Single Pack |
| AX100652 | TIA Green  | Single Pack |
| AX100175 | TIA Orange | Single Pack |
| AX100581 | TIA Orange | Single Pack |
| AX100592 | TIA Orange | Single Pack |
| AX100649 | TIA Orange | Single Pack |
| AX100180 | TIA Purple | Single Pack |

|          |            |             |
|----------|------------|-------------|
| AX100586 | TIA Purple | Single Pack |
| AX100597 | TIA Purple | Single Pack |
| AX100654 | TIA Purple | Single Pack |
| AX100176 | TIA Red    | Single Pack |
| AX100582 | TIA Red    | Single Pack |
| AX100593 | TIA Red    | Single Pack |
| AX100650 | TIA Red    | Single Pack |
| AX100177 | TIA Yellow | Single Pack |
| AX100583 | TIA Yellow | Single Pack |
| AX100594 | TIA Yellow | Single Pack |
| AX100651 | TIA Yellow | Single Pack |
| AX100173 | White      | Single Pack |
| AX100579 | White      | Single Pack |
| AX100590 | White      | Single Pack |
| AX100647 | White      | Single Pack |

## Product Notes

|                 |  |
|-----------------|--|
| Included Parts: | Center Stuffercap Coded A/B            |
| Notes:          | Please See Installation Guide PX102753 |

## History

|                      |  |
|----------------------|--|
| Update and Revision: | Revision Number: 0.243 Revision Date: 05-10-2023 |
|----------------------|--|

© 2024 Belden, Inc

All Rights Reserved.

Although Belden makes every reasonable effort to ensure their accuracy at the time of this publication, information and specifications described here in are subject to error or omission and to change without notice, and the listing of such information and specifications does not ensure product availability.

Belden provides the information and specifications herein on an "ASIS" basis, with no representations or warranties, whether express, statutory or implied. In no event will Belden be liable for any damages (including consequential, indirect, incidental, special, punitive, or exemplary damages) whatsoever, even if Belden has been advised of the possibility of such damages, whether in an action under contract, negligence or any other theory, arising out of or in connection with the use, or inability to use, the information or specifications described herein.

All sales of Belden products are subject to Belden's standard terms and conditions of sale.

Belden believes this product to be in compliance with all applicable environmental programs as listed in the data sheet. The information provided is correct to the best of Belden's knowledge, information and belief at the date of its publication. This information is designed only as a general guide for the safe handling, storage, and any other operation of the product itself or the one that it becomes a part of. The Product Disclosure is not to be considered a warranty or quality specification. Regulatory information is for guidance purposes only. Product users are responsible for determining the applicability of legislation and regulations based on their individual usage of the product.