



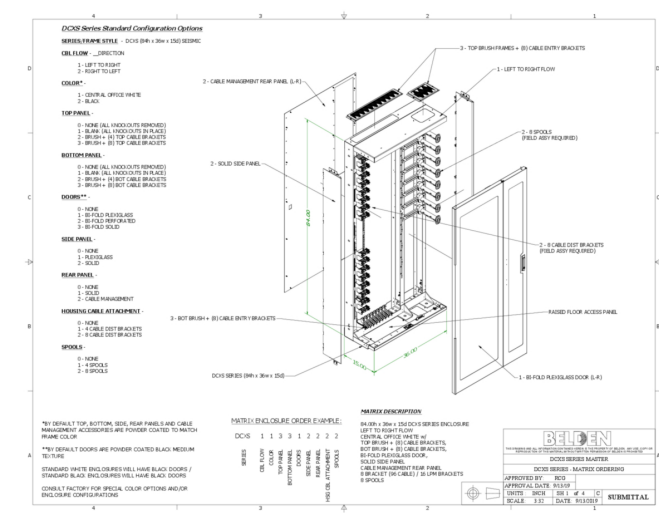
Product: [DCXS21-22101-22](#)

DCX Cabinet RL

Product Description

DCX CABINET SEISMIC 84x36x15, RIGHT-LEFT, WHITE, BRUSH + 4 TOP CBL ENTRY BRKT, BRUSH + 4 BOT CBL ENTRY BRKT, BIFOLD PLEXI DOOR, NO SIDE PNL, FULL REAR PNL, 8 CBL DIST BRKT, 8 PATCH CORD SPOOLS

Technical Drawing



Technical Specifications

Product Overview

Environmental Space:	Indoor
Suitable Applications:	Optical Distribution Frame, Data Centers , Central Equipment Room (Broadcast)

Construction

Weight:	275.41
Height:	84
Width:	36
Depth:	15

Temperature Range

Operating Temperature Range:	-10°C To +60°C
Storage Temperature Range:	-40°C To +70°C

Product Material

Materials

Description	Material
Frame Unit	Steel/Aluminum
Front Doors	Steel/Aluminum/Polycarbonate

Standards

EU Directive 2011/65/EU (RoHS 2):	Yes
MII Order #39 (China RoHS):	EUP 50
Other Specification:	Seismic Rating (Zone 4)

Related Part Numbers

Included Parts:	Front Doors (2x), Rear Panel, Top (4x) & Bottom (4x) Cable Entry Brackets, Cable Distribution Brackets (8x), Patch Cord Spools (8x)
-----------------	-------------------------------------------------------------------------------------------------------------------------------------

History

Update and Revision:	Revision Number: 0.48 Revision Date: 03-27-2024
----------------------	-------------------------------------------------

© 2024 Belden, Inc

All Rights Reserved.

Although Belden makes every reasonable effort to ensure their accuracy at the time of this publication, information and specifications described here in are subject to error or omission and to change without notice, and the listing of such information and specifications does not ensure product availability.

Belden provides the information and specifications herein on an "ASIS" basis, with no representations or warranties, whether express, statutory or implied. In no event will Belden be liable for any damages (including consequential, indirect, incidental, special, punitive, or exemplary damages) whatsoever, even if Belden has been advised of the possibility of such damages, whether in an action under contract, negligence or any other theory, arising out of or in connection with the use, or inability to use, the information or specifications described herein.

All sales of Belden products are subject to Belden's standard terms and conditions of sale.

Belden believes this product to be in compliance with all applicable environmental programs as listed in the data sheet. The information provided is correct to the best of Belden's knowledge, information and belief at the date of its publication. This information is designed only as a general guide for the safe handling, storage, and any other operation of the product itself or the one that it becomes a part of. The Product Disclosure is not to be considered a warranty or quality specification. Regulatory information is for guidance purposes only. Product users are responsible for determining the applicability of legislation and regulations based on their individual usage of the product.