

Product: [DAP647-RW](#)

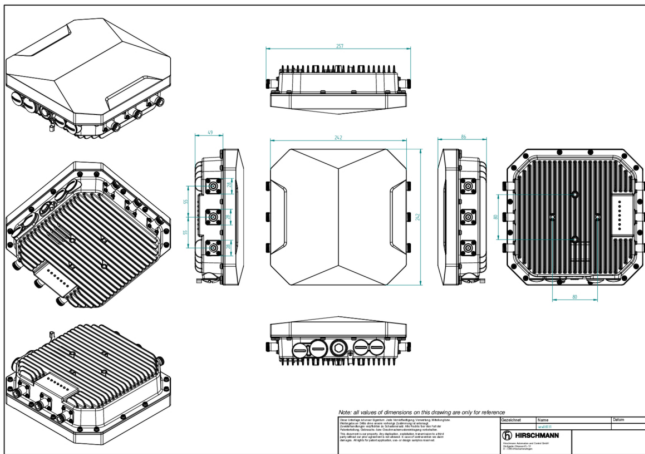
Dragonfly Outdoor Wi-Fi 6 (802.11ax) Access Point



Product Description

Dragonfly Outdoor, dual radio, 5 GHz 802.11ax 4x4:4 and 2.4 GHz 802.11ax 2x2:2, external antenna; integrated BLE/Zigbee, scanning and security function

Technical Drawing



Technical Specifications

Product description

Type:	DAP647
Name:	DAP647-RW
Part Number:	942999316
Port type and quantity:	1 × 10/100/1000/2500Mbps RJ45 port, Eth0, PoE PD (IEEE 802.3bt); 1 × 10/100/1000Mbps RJ45 port, Eth1, PoE PSE (IEEE 802.3at); 1 × SFP slot 1Gbps; 1 × Reset button
Radio protocol:	IEEE 802.11b; 802.11a/g/n/ac; 802.11ax; up to 2.975Gbps (2.402Gbps in 5GHz and 573Mbps in 2.4GHz) data rate; BLE5/Zigbee (802.15.4), scanning and security function

Radio technology

Antenna connector:	External antennas, 2x2:2 @ 2.4GHz, 4x4:4 @ 5GHz, 6 × N female connectors; ANT0-ANT3 are 5GHz band, ANT4-ANT5 support 2.4GHz band; Integrated BLE antenna
Frequency band:	2.400 to 2.4835 GHz; 5.150 to 5.250 GHz; 5.250 to 5.350 GHz; 5.470 to 5.725 GHz; 5.725 to 5.850 GHz *available channels: Dependent on configured regulatory domain
Modulation:	802.11b: BPSK, QPSK, CCK; 802.11a/g/n/ac: BPSK, QPSK, 16-QAM, 64-QAM, 256-QAM; 802.11ax: BPSK, QPSK, CCK, 16-QAM, 64-QAM, 256-QAM, 1024-QAM
RF Optimization:	Receive sensitivity (per chain): 1Mb/s@2.4GHz=-99; 11Mb/s@2.4GHz=-89; 6Mb/s@2.4GHz=-93 & @5GHz=-91; 54Mb/s@2.4GHz=-76 & @5GHz=-74; HT20 (MCS0/8)@2.4GHz=-92 & @5GHz=-90; HT20 (MCS7/15)@2.4GHz=-74 & @5GHz=-72; HT40 (MCS0/8)@2.4GHz=-91 & @5GHz=-88; HT40 (MCS7/15)@2.4GHz=-74 & @5GHz=-70; VHT20 (MCS0)@2.4GHz=-92 & @5GHz=-90; VHT20 (MCS8)@2.4GHz=-70 & @5GHz=-68; VHT40 (MCS0)@2.4GHz=-91 & @5GHz=-88; VHT40 (MCS9)@2.4GHz=-68 & @5GHz=-64; VHT80 (MCS0)@5GHz=-86; VHT80 (MCS9)@5GHz=-61; HE20 (MCS0)@2.4GHz=-94 & @5GHz=-92; HE20 (MCS11)@2.4GHz=-63 & @5GHz=-62; HE40 (MCS0)@2.4GHz=-91 & @5GHz=-89; HE40 (MCS11)@2.4GHz=-62 & @5GHz=-60; HE80 (MCS0)@5GHz=-87; HE80 (MCS11)@5GHz=-58 Maximum transmit power (per chain)*: 1Mb/s@2.4GHz=22 dBm; 11Mb/s@2.4GHz=22 dBm; 6Mb/s@2.4GHz=22 dBm & @5GHz=21 dBm; 54Mb/s@2.4GHz=21 dBm & @5GHz=20 dBm; HT20 (MCS0/8)@2.4GHz=22 dBm & @5GHz=21 dBm; HT20 (MCS7/15)@2.4GHz=21 dBm & @5GHz=19 dBm; HT40 (MCS0/8)@2.4GHz=22 dBm & @5GHz=21 dBm; HT40 (MCS7/15)@2.4GHz=21 dBm & @5GHz=18 dBm; VHT20 (MCS0)@2.4GHz=22 dBm & @5GHz=21 dBm; VHT20 (MCS8)@2.4GHz=20 dBm & @5GHz=18 dBm; VHT40 (MCS0)@2.4GHz=22 dBm & @5GHz=21 dBm; VHT40 (MCS9)@2.4GHz=20 dBm & @5GHz=18 dBm; VHT80 (MCS0)@5GHz=21 dBm; VHT80 (MCS9)@5GHz=18 dBm; HE20 (MCS0)@2.4GHz=22 dBm & @5GHz=21 dBm; HE20 (MCS11)@2.4GHz=20 dBm & @5GHz=17 dBm; HE40 (MCS0)@2.4GHz=22 dBm & @5GHz=21 dBm; HE40 (MCS11)@2.4GHz=20 dBm & @5GHz=17 dBm; HE80 (MCS0)@5GHz=21 dBm; HE80 (MCS11)@5GHz=17 dBm *Note: Maximum capability of the hardware provided (excluding antenna gain). Maximum transmit power is limited by local regulatory setting

Power requirements

Operating Voltage:	Support Power over Ethernet (IEEE 802.3bt, 802.3at)
Power consumption:	24W (802.3at POE in, Eth1 PSE disabled); 46W (802.3bt Type3 POE in, Eth1 supports 802.3af PSE); 64W (802.3bt Type4 PoE in, full functions, Eth1 supports 802.3at PSE)

Security features

Authentication:	802.11i, Wi-Fi Protected Access 2 (WPA2), WPA, WPA3 (WPA3-Personal WPA3-Enterprise); 802.1X; Portal page authentication; Advanced Encryption Standard (AES), Temporal Key Integrity Protocol (TKIP)
-----------------	---

Software

Management:	Internal User Database, Zero-touch provisioning (ZTP), System log report, SNMP Trap Notification with DAC software, Floor plan and heat map with DAC software, Industrial HiVision
Security:	Captive Portal, Radius Client, Wireless QoS, Client sticky avoidance, User behavior tracking, White / black list, ACL, Rogue AP location and containment, Wireless Attack Detection
Software features:	Auto channel selection; Auto transmit power control; Bandwidth control per SSID; L2 roaming; L3 roaming with DAC software; Band steering; Client smart load balance; NTP server client; Wireless MESH P2P/P2MP

Ambient conditions

Operating temperature:	-40-65 °C
Storage/transport temperature:	-40°C to +85 °C
Relative humidity (non-condensing):	0 - 100 %
Wind load:	up to 100MPH sustained winds; up to 165MPH wind gusts

Mechanical construction

Width:	243 mm
Height:	85 mm
Depth:	243 mm
Weight:	2.7 kg
Mounting:	Pole/Wall Mount
Protection class:	IP67

Approvals

Safety of industrial control equipment:	EN 61131-2, EN 62368-1, EN 60950-22
FCC:	Yes
UL/cUL:	Yes
CE:	Yes
RoHS Compliant:	RoHS ((EU) 2015/863) and RoHS (GB/T26572-2011) compliant
Radio:	EN 300 328 (2.4 GHz), EN 301 893 (5 GHz), EN 302 502 (5.8 GHz), EN 301 489-1, EN 301 489-17

Scope of delivery and accessories

Accessories to Order Separately:	Mounting kit (AP-MNT-OUT); External antennas; PoE injector, SFP module (only support HIT SFP module); SFP Gland; Cables 2m, 5m, 15m
Scope of delivery:	Safety instruction, Ethernet cable gland

History

Update and Revision:	Revision Number: 0.10 Revision Date: 09-07-2023
----------------------	---

© 2023 Belden, Inc

All Rights Reserved.

Although Belden makes every reasonable effort to ensure their accuracy at the time of this publication, information and specifications described here in are subject to error or omission and to change without notice, and the listing of such information and specifications does not ensure product availability.

Belden provides the information and specifications herein on an "ASIS" basis, with no representations or warranties, whether express, statutory or implied. In no event will Belden be liable for any damages (including consequential, indirect, incidental, special, punitive, or exemplary damages) whatsoever, even if Belden has been advised of the possibility of such damages, whether in an action under contract, negligence or any other theory, arising out of or in connection with the use, or inability to use, the information or specifications described herein.

All sales of Belden products are subject to Belden's standard terms and conditions of sale.

Belden believes this product to be in compliance with all applicable environmental programs as listed in the data sheet. The information provided is correct to the best of Belden's knowledge, information and belief at the date of its publication. This information is designed only as a general guide for the safe handling, storage, and any other operation of the product itself or the one that it becomes a part of. The Product Disclosure is not to be considered a warranty or quality specification. Regulatory information is for guidance purposes only. Product users are responsible for determining the applicability of legislation and regulations based on their individual usage of the product.