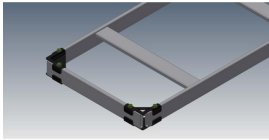




## Product: [Cable Runway Closing Kit](#)



### Cable Runway Closing Kit - UL Classified

#### Product Description

Cable Runway Closing Kit

#### Technical Specifications

##### Application

Product Overview:	Cable runway closing kit is used to close the end of a runway. Compatible with all Belden cable runways.
Benefits:	Cable runway closing kit is used to close the end of a runway., Compatible with all Belden cable runways.
Environmental Space:	Indoor

##### Environmental and Overall Characteristics

Finish:	Black Powdercoat Finish
Material:	Steel
Color:	Black

##### Related Part Numbers

Included Parts:	Kit consists of: (1) end closing bar black powdercoat finish, (4) corner clamp plates black zinc, (4) 1/4-20 x 1/2" grounding screws, (2) 3/8"-16 x 1.25" trimmed head bolts, (2) 3/8"-16 hex nuts, (2) 3/8" split lock washers
Packaging:	Individually Boxed

##### Variants

Part #	Description	Color	Lead time	Included Parts	Shipping Weight
BLCKE700-12B	12"W Cable Runway Closing Kit - UL Classified	Black	Black lead time (14 day ARO)	Kit consists of: (1) end closing bar black powdercoat finish, (4) corner clamp plates black zinc, (4) 1/4-20 x 1/2" grounding screws, (2) 3/8"-16 x 1.25" trimmed head bolts, (2) 3/8"-16 hex nuts, (2) 3/8" split lock washers	3.0 lb
BLCKE700-18B	18"W Cable Runway Closing Kit - UL Classified	Black	Black lead time (14 day ARO)	Kit consists of: (1) end closing bar black powdercoat finish, (4) corner clamp plates black zinc, (4) 1/4-20 x 1/2" grounding screws, (2) 3/8"-16 x 1.25" trimmed head bolts, (2) 3/8"-16 hex nuts, (2) 3/8" split lock washers	4.0 lb
BLCKE700-24B	24"W Cable Runway Closing Kit - UL Classified	Black	Black lead time (14 day ARO)	Kit consists of: (1) end closing bar black powdercoat finish, (4) corner clamp plates black zinc, (4) 1/4-20 x 1/2" grounding screws, (2) 3/8"-16 x 1.25" trimmed head bolts, (2) 3/8"-16 hex nuts, (2) 3/8" split lock washers	5.0 lb
BLCKE700-12W	12"W Cable Runway Closing Kit - UL Classified	White	White extended lead time will be (6-8 weeks ARO)	Kit consists of: (1) end closing bar black powdercoat finish, (4) corner clamp plates black zinc, (4) 1/4-20 x 1/2" grounding screws, (2) 3/8"-16 x 1.25" trimmed head bolts, (2) 3/8"-16 hex nuts, (2) 3/8" split lock washers	3.0 lb
BLCKE700-18W	18"W Cable Runway Closing Kit - UL Classified	White	White extended lead time will be (6-8 weeks ARO)	Kit consists of: (1) end closing bar black powdercoat finish, (4) corner clamp plates black zinc, (4) 1/4-20 x 1/2" grounding screws, (2) 3/8"-16 x 1.25" trimmed head bolts, (2) 3/8"-16 hex nuts, (2) 3/8" split lock washers	4.0 lb
BLCKE700-24W	24"W Cable Runway Closing Kit - UL Classified	White	White extended lead time will be (6-8 weeks ARO)	Kit consists of: (1) end closing bar black powdercoat finish, (4) corner clamp plates black zinc, (4) 1/4-20 x 1/2" grounding screws, (2) 3/8"-16 x 1.25" trimmed head bolts, (2) 3/8"-16 hex nuts, (2) 3/8" split lock washers	5.0 lb

Update and Revision: Revision Number: 0.146 Revision Date: 11-09-2022

© 2023 Belden, Inc  
All Rights Reserved.

Although Belden makes every reasonable effort to ensure their accuracy at the time of this publication, information and specifications described here in are subject to error or omission and to change without notice, and the listing of such information and specifications does not ensure product availability.

Belden provides the information and specifications herein on an "ASIS" basis, with no representations or warranties, whether express, statutory or implied. In no event will Belden be liable for any damages (including consequential, indirect, incidental, special, punitive, or exemplary damages) whatsoever, even if Belden has been advised of the possibility of such damages, whether in an action under contract, negligence or any other theory, arising out of or in connection with the use, or inability to use, the information or specifications described herein.

All sales of Belden products are subject to Belden's standard terms and conditions of sale.

Belden believes this product to be in compliance with all applicable environmental programs as listed in the data sheet. The information provided is correct to the best of Belden's knowledge, information and belief at the date of its publication. This information is designed only as a general guide for the safe handling, storage, and any other operation of the product itself or the one that it becomes a part of. The Product Disclosure is not to be considered a warranty or quality specification. Regulatory information is for guidance purposes only. Product users are responsible for determining the applicability of legislation and

regulations based on their individual usage of the product.