



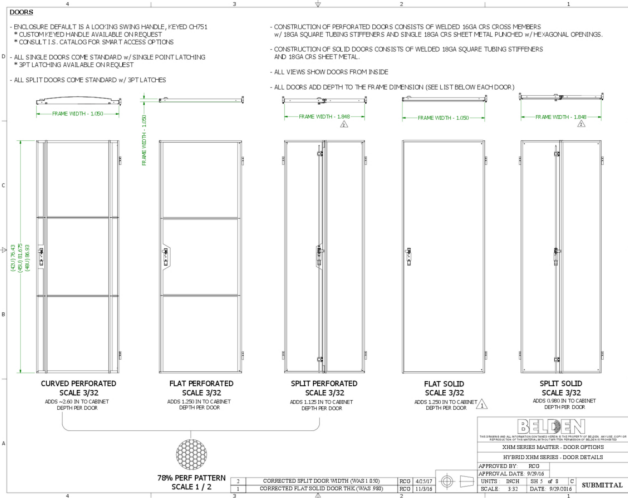
**Product:** [Cabinet Series Split Perf Door Options](#)

**XH Cabinet Series Split Perf Door Options**

**Product Description**

XH Cabinet Series Split Perf Door Options

**Technical Drawing**



**Technical Specifications**

**Application**

<b>Product Overview:</b>	These individual component ordering options are available as an ala carte option for customers that have existing XH Series Belden Cabinets and would like to replace an item, or want to add an additional item. These component selections are not meant to serve as an individual item selection to create a complete cabinet. If you would like to configure a cabinet for a BOM, please go to the cabinet configurator section of the online catalog that is titled "Need a custom configured product?" or do a search in the search bar for the cabinet series you are looking for to see the selection of compatible items available.
<b>Features:</b>	Integrated punched hexagonal pattern is 78% open for low-resistance airflow through doors, Belden offers an array of door options that are available with the XH Cabinet Series., Split perforated doors come standard with 3 Pt. latches with Swing Handle keyed CH751.
<b>Environmental Space:</b>	Indoor

**Environmental and Overall Characteristics**

<b>Finish:</b>	Medium Texture Powder Coat
<b>Material:</b>	Steel

**Related Part Numbers**

<b>Packaging:</b>	If ordered with a cabinet, door will be installed. If ordered separately, product will be packaged and shipped. *Note a crate packing charge will apply to protect doors in transit
-------------------	---

**Variants**

Cabinet Frame Height	Cabinet Frame Width	Color	Cabinet Application	Ordering Part #
42U	24.0 in	Black	XHM Series	H4224SPD01
42U	30.0 in	Black	XHM Series XHS Series XHSN Series	H4230SPD01
42U	40.0 in	Black	XHS Series XHSN Series	H4240SPD01
45U	24.0 in	Black	XHM Series	H4524SPD01

45U	30.0 in	Black	XHM Series XHS Series XHSN Series	H4530SPD01
45U	40.0 in	Black	XHS Series XHSN Series	H4540SPD01
48U	24.0 in	Black	XHM Series	H4824SPD01
48U	30.0 in	Black	XHM Series XHS Series XHSN Series	H4830SPD01
48U	40.0 in	Black	XHS Series XHSN Series	H4840SPD01
42U	24.0 in	White	XHM Series	H4224SPD02
42U	30.0 in	White	XHM Series XHS Series XHSN Series	H4230SPD02
42U	40.0 in	White	XHS Series XHSN Series	H4240SPD02
45U	24.0 in	White	XHM Series	H4524SPD02
45U	30.0 in	White	XHM Series XHS Series XHSN Series	H4530SPD02
45U	40.0 in	White	XHS Series XHSN Series	H4540SPD02
48U	24.0 in	White	XHM Series	H4824SPD02
48U	30.0 in	White	XHM Series XHS Series XHSN Series	H4830SPD02
48U	40.0 in	White	XHS Series XHSN Series	H4840SPD02

Update and Revision:	Revision Number: 0.40 Revision Date: 05-31-2024
----------------------	---

© 2024 Belden, Inc

All Rights Reserved.

Although Belden makes every reasonable effort to ensure their accuracy at the time of this publication, information and specifications described here in are subject to error or omission and to change without notice, and the listing of such information and specifications does not ensure product availability.

Belden provides the information and specifications herein on an "ASIS" basis, with no representations or warranties, whether express, statutory or implied. In no event will Belden be liable for any damages (including consequential, indirect, incidental, special, punitive, or exemplary damages) whatsoever, even if Belden has been advised of the possibility of such damages, whether in an action under contract, negligence or any other theory, arising out of or in connection with the use, or inability to use, the information or specifications described herein.

All sales of Belden products are subject to Belden's standard terms and conditions of sale.

Belden believes this product to be in compliance with all applicable environmental programs as listed in the data sheet. The information provided is correct to the best of Belden's knowledge, information and belief at the date of its publication. This information is designed only as a general guide for the safe handling, storage, and any other operation of the product itself or the one that it becomes a part of. The Product Disclosure is not to be considered a warranty or quality specification. Regulatory information is for guidance purposes only. Product users are responsible for determining the applicability of legislation and regulations based on their individual usage of the product.