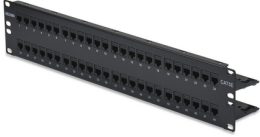




Product: [CAT5e DataConnect Panel 48P](#)

CAT5e DataConnect Patch Panel, UTP, 48 Port



Product Description

CAT5e DataConnect Patch Panel, UTP, Flat, 48-Port, 2U (Preloaded)

Technical Specifications

Product Overview

Suitable Applications:	Ethernet 10/ 100/ 1000BASE-T, 2.5GBASE-T
------------------------	--

Physical Characteristics (Overall)

Height:	2.96 in
Width:	19.000 in
Depth:	2.960 in
Port Count:	48 Port
Front Connection:	Flush
Packaging:	Individually packaged in a cardboard box.
Weight:	3.400 lbs

Connectors

Materials

Description	Material	Color
Panel	Steel	Black
Management Bar	Steel/Plastic	Black

Construction and Dimensions

Max Capacity:	48 connectors (preloaded)
---------------	---------------------------

Electrical Characteristics

Dielectric Strength:	1,000 V RMS @ 60 Hz for 1 minute
Current Rating:	1.500 A
Insulation Resistance:	500 M-Ohm Minimum
Termination Resistance:	2.5 mOhm

Temperature Range

Installation Temperature Range:	-10°C To +60°C
Storage Temperature Range:	-40°C To +70°C
Operating Temperature Range:	-10°C To +60°C

Mechanical Characteristics

Footprint/Type:	DataConnect
Tool Compatibility:	Belden 110 Connecting Tool (AX100749), MediaFlex Termination Station (AX101852), Belden Rapid TerminationTool (AX105566)
Plug /Jack Compatibility:	RJ45
Cable/Connector Retention:	11.25 lbs
Connector/Hardware Retention:	20 lbs

Plug/Connector Retention:	11.250 lbs
---------------------------	------------

Standards

UL Rating:	UL94V-0
ISO/IEC Compliance:	IEC 60603-7
Data Category:	Category 5e
TIA/EIA Compliance:	ANSI/TIA 1096-A (formerly FCC Part 68-F)
IEEE Compliance:	IEEE 802.3at type 1 and 2 (PoE) up to 30W, IEEE 802.3bt type 3 and 4 (PoE) up to 100W, CISCO (UPOE) up to 60W, Power over HDBaseTTM (POH) up to 100W

Applicable Environmental and Other Programs

Environmental Space:	Indoor
EU Directive 2011/65/EU (RoHS 2):	Yes
MII Order #39 (China RoHS):	EUP 50

Flammability, LSOH, Toxicity Testing

Safety Listing:	c(UL)us Listed, UL 1863, UL File E77103
-----------------	---

Related Part Numbers

Related Parts:	DataConnect CAT5E Modular Jacks, DataConnect CAT5E Modular cord
----------------	---

Variants

Item #	Color	Put-Up Type	UPC
DC5PPF2U48BK	Black	2U	611589249225

Product Notes

Included Parts:	8 Screws (12x24); 2 Printable Label Half-Sheets; 4 Velcro Straps; 2 Rear Cable Support Bars; 1 Installation Guide; 48 Protective Caps
Notes:	For proper installation refer to Installation Guide PX106898 included with the product

History

Update and Revision:	Revision Number: 0.31 Revision Date: 06-01-2023
----------------------	---

© 2024 Belden, Inc

All Rights Reserved.

Although Belden makes every reasonable effort to ensure their accuracy at the time of this publication, information and specifications described here in are subject to error or omission and to change without notice, and the listing of such information and specifications does not ensure product availability.

Belden provides the information and specifications herein on an "ASIS" basis, with no representations or warranties, whether express, statutory or implied. In no event will Belden be liable for any damages (including consequential, indirect, incidental, special, punitive, or exemplary damages) whatsoever, even if Belden has been advised of the possibility of such damages, whether in an action under contract, negligence or any other theory, arising out of or in connection with the use, or inability to use, the information or specifications described herein.

All sales of Belden products are subject to Belden's standard terms and conditions of sale.

Belden believes this product to be in compliance with all applicable environmental programs as listed in the data sheet. The information provided is correct to the best of Belden's knowledge, information and belief at the date of its publication. This information is designed only as a general guide for the safe handling, storage, and any other operation of the product itself or the one that it becomes a part of. The Product Disclosure is not to be considered a warranty or quality specification. Regulatory information is for guidance purposes only. Product users are responsible for determining the applicability of legislation and regulations based on their individual usage of the product.