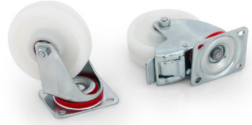




Product: [CASTERS ESN and ESH E-Series](#)

EDAB4160



Product Description

Casters for Free Standing E-Series ESN and ESH Cabinets. Set of 4 Casters, including two with brake.

Technical Specifications

Application

Suitable Applications:	Set of four casters to be installed on the bottom plate of ESN and ESH cabinets.
Environmental Space:	Indoor

Construction and Dimensions

Height:	115 mm
---------	--------

Mechanical Characteristics

Mechanical Characteristics Note:	Using the casters, the cabinet's height increases by 155 mm
Load Capacity:	500 kg for 600 mm wide, 600 kg for 800 mm wide cabinets. (including weight of the cabinet)
Load Capacity - Dynamic:	the load capacity of the castors is applicable for travel speed up to 4 km/h on level ground and smooth surface at ambient temperature in the range of 10-30 deg. C.

Environmental and Overall Characteristics

Color:	Metallic
--------	----------

Standards

EU Directive 2011/65/EU (RoHS 2):	Compliant
-----------------------------------	-----------

Related Part Numbers

Included Parts:	- 2x casters with break, - 2x caster without brake, 16 pcs M5xT25 screws, 16pcs enlarged washer 5.3
Packaging:	packed per 4 pieces

Variants

Item #	Colour
EDAB4160	Metallic

Update and Revision:	Revision Number: 0.78 Revision Date: 04-04-2024
----------------------	---

© 2024 Belden, Inc

All Rights Reserved.

Although Belden makes every reasonable effort to ensure their accuracy at the time of this publication, information and specifications described here in are subject to error or omission and to change without notice, and the listing of such information and specifications does not ensure product availability.

Belden provides the information and specifications herein on an "ASIS" basis, with no representations or warranties, whether express, statutory or implied. In no event will Belden be liable for any damages (including consequential, indirect, incidental, special, punitive, or exemplary damages) whatsoever, even if Belden has been advised of the possibility of such damages, whether in an action under contract, negligence or any other theory, arising out of or in connection with the use, or inability to use, the information or specifications described herein.

All sales of Belden products are subject to Belden's standard terms and conditions of sale.

Belden believes this product to be in compliance with all applicable environmental programs as listed in the data sheet. The information provided is correct to the best of Belden's knowledge, information and belief at the date of its publication. This information is designed only as a general guide for the safe handling, storage, and any other operation of the product itself or the one that it becomes a part of. The Product Disclosure is not to be considered a warranty or quality specification. Regulatory information is for guidance purposes only. Product users are responsible for determining the applicability of legislation and regulations based on their individual usage of the product.