



Product: [CAD1108001](#)

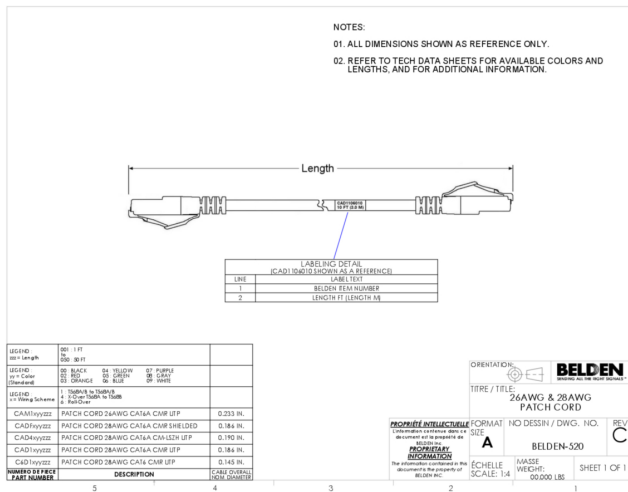
Cable Assemblies - CAT6A Performance Modular Cord, 1 ft. (0.3 m)



Product Description

CAT6A Performance Patch Cord UTP, 4-Pair, 28 AWG Stranded, CMR, T568A/B-T568A/B, Gray, 1 ft. (0.3 m)

Technical Drawing



Materials

Description	Material	Type
Plug	Polycarbonate - UL94V-0	RJ45
Boot	Polycarbonate - UL94V-0	
Front Connection	Phosphor Bronze with 50u inch Gold over Nickel Plating	Blades

Electrical Characteristics

Dielectric Strength:	1,000 V RMS @ 60 Hz for 1 minute
Current Rating:	1.500 A
Insulation Resistance:	500 M-Ohm Minimum
Max Contact Resistance:	20 mOhm

Voltage

UL Voltage Rating
300 V RMS

Temperature Range

Installation Temperature Range:	-10°C To +60°C
Storage Temperature Range:	-40°C To +70°C
Operating Temperature Range:	-10°C To +60°C

Mechanical Characteristics

Maximum Recommended Pulling Tension:	11.250 lbs
Min Bend Radius (Overall Cable):	0.744 in
Plug /Jack Compatibility:	RJ45

Termination Interface

Termination	Connection	Durabilities
RJ45	Mated Connection	750 Cycles

Standards

UL Rating:	Riser
TIA/EIA Compliance:	Category 6A - TIA-568.2-D ISO/IEC 11801-1
Other Standards:	IEC 60603-7, ANSI/TIA 1096-A (formerly FCC Part 68-F)

Applicable Environmental and Other Programs

Environmental Space:	Indoor
EU Directive 2002/95/EC (RoHS):	Yes
MII Order #39 (China RoHS):	EUP 50

Suitability

Suitability - Indoor:	Yes
-----------------------	-----

Flammability, LSOH, Toxicity Testing

UL voltage rating:	300 V RMS
Safety Listing:	c(UL)us Listed

Related Part Numbers

Related Parts:	10GX Modular Jacks, 10GX RJ45 Couplers, 10GX Patch Panels
----------------	---

Product Notes

Notes:	Insulation Material: High Density Polyethylene Cable Weight: 0.0152 lbs/ft. This product may be protected by one or more patents. For further information, please visit: https://www.belden.com/patents .
Labeling:	Labeling: Belden Part Number and Cord Length

History

Update and Revision:	Revision Number: 0.14 Revision Date: 10-24-2025
----------------------	---

© 2026 Belden, Inc

All Rights Reserved.

Although Belden makes every reasonable effort to ensure their accuracy at the time of this publication, information and specifications described here in are subject to error or omission and to change without notice, and the listing of such information and specifications does not ensure product availability.

Belden provides the information and specifications herein on an "ASIS" basis, with no representations or warranties, whether express, statutory or implied. In no event will Belden be liable for any damages (including consequential, indirect, incidental, special, punitive, or exemplary damages) whatsoever, even if Belden has been advised of the possibility of such damages, whether in an action under contract, negligence or any other theory, arising out of or in connection with the use, or inability to use, the information or specifications described herein.

All sales of Belden products are subject to Belden's standard terms and conditions of sale.

Belden believes this product to be in compliance with all applicable environmental programs as listed in the data sheet. The information provided is correct to the best of Belden's knowledge, information and belief at the date of its publication. This information is designed only as a general guide for the safe handling, storage, and any other operation of the product itself or the one that it becomes a part of. The Product Disclosure is not to be considered a warranty or quality specification. Regulatory information is for guidance purposes only. Product users are responsible for determining the applicability of legislation and regulations based on their individual usage of the product.