



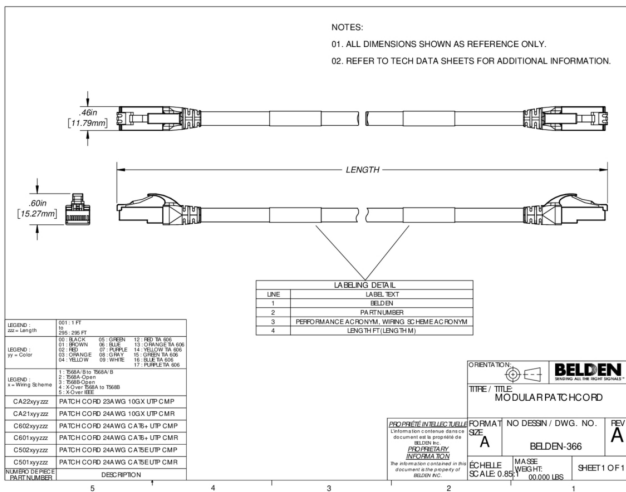
**Product:** [CA21108025](#)

**Cable Assemblies - 10GX Modular Cord, 25 ft. (7.6 m)**

**Product Description**

10GX Patch Cord UTP, Bonded-Pair, 4-Pair, 24 AWG Solid, CMR, T568A/B-T568A/B, Gray, 25 ft. (7.6 m)

**Technical Drawing**



**Technical Specifications**

**Product Overview**

|                        |   |
|------------------------|---|
| Suitable Applications: | IBDN System 10GX, TIA Category 6A, ISO Class EA, 10GBASE-T, Support Power over Ethernet (up to 100W), Cisco UPOE (up to 60W) and Power over HDBase-T (up to 100W) |
|------------------------|---|

**Physical Characteristics (Overall)**

**Conductor**

| AWG | Stranding | Material         | No. of Pairs |
|-----|-----------|------------------|--------------|
| 24  | Solid     | BC - Bare Copper | 4            |

**Insulation**

| Material        |
|-----------------|
| PO - Polyolefin |

**Outer Jacket**

| Material                 |
|--------------------------|
| PVC - Polyvinyl Chloride |

|                           |   |
|---------------------------|---|
| Overall Nominal Diameter: | 0.265 in                                      |
| Wiring Scheme:            | T568A/B-T568A/B                               |
| Packaging:                | Individually packaged in a clear plastic bag. |

**Connectors**

## Materials

| Description      | Material   | Type   |
|------------------|--|--------|
| Plug             | Polycarbonate  | RJ45   |
| Boot             | Elastomer  |        |
| Front Connection | Phosphor Bronze with 50u inch Gold over Nickel Plating | Blades |

## Electrical Characteristics

|                             |  |
|-----------------------------|--|
| Dielectric Strength:        | 1,000 V RMS @ 60 Hz for 1 minute                                       |
| Current Rating:             | 1.500 A  |
| Insulation Resistance:      | 500 M-Ohm Minimum  |
| Max Contact Resistance:     | 20 mOhm  |
| High Frequency Table Notes: | 100 meter Cable Specifications - * TIA/EIA-568.2-D Category 6 Standard |

## Voltage

| UL Voltage Rating |
|-------------------|
| 300 V RMS         |

## Mated Connection

| Frequency (MHz) | Max. Insertion Loss Belden** (dB) | Min. Return Loss Belden** (dB) | Min. PSANEXT TIA* (dB) | Min. PSANEXT Belden** (dB) | Min. PSAACRF TIA* (dB) | Min. PSAACRF Belden** (dB) | Min. Balanced TCL TIA* (dB) | Min. Balanced TCL Belden** (dB) |
|-----------------|-----------------------------------|--------------------------------|------------------------|----------------------------|------------------------|----------------------------|-----------------------------|---------------------------------|
| 1 MHz           | 2.4 dB                            | 20 dB                          | 67 dB                  | 87 dB                      | 67 dB                  | 75 dB                      | 40 dB                       | 48 dB                           |
| 4 MHz           | 4.5 dB                            | 23 dB                          | 67 dB                  | 87 dB                      | 66.2 dB                | 75 dB                      | 40 dB                       | 48 dB                           |
| 8 MHz           | 6.3 dB                            | 24.5 dB                        | 67 dB                  | 87 dB                      | 60.1 dB                | 75 dB                      | 40 dB                       | 48 dB                           |
| 10 MHz          | 7 dB                              | 25 dB                          | 67 dB                  | 87 dB                      | 58.2 dB                | 75 dB                      | 40 dB                       | 48 dB                           |
| 16 MHz          | 8.9 dB                            | 25 dB                          | 67 dB                  | 87 dB                      | 54.1 dB                | 70.9 dB                    | 38 dB                       | 46 dB                           |
| 20 MHz          | 10 dB                             | 25 dB                          | 67 dB                  | 87 dB                      | 52.2 dB                | 69 dB                      | 37 dB                       | 45 dB                           |
| 25 MHz          | 11.1 dB                           | 25 dB                          | 67 dB                  | 87 dB                      | 50.2 dB                | 67 dB                      | 36 dB                       | 44 dB                           |
| 31.25 MHz       | 12.5 dB                           | 25 dB                          | 67 dB                  | 87 dB                      | 48.3 dB                | 65.1 dB                    | 35.1 dB                     | 43.1 dB                         |
| 62.5 MHz        | 17.9 dB                           | 25 dB                          | 65.6 dB                | 85.6 dB                    | 42.3 dB                | 59.1 dB                    | 32 dB                       | 40 dB                           |
| 100 MHz         | 22.8 dB                           | 25 dB                          | 62.5 dB                | 82.5 dB                    | 38.2 dB                | 55 dB                      | 30 dB                       | 38 dB                           |
| 200 MHz         | 33 dB                             | 21 dB                          | 58 dB                  | 78 dB                      | 32.2 dB                | 49 dB                      | 27 dB                       | 35 dB                           |
| 250 MHz         | 37.2 dB                           | 20.5 dB                        | 56.5 dB                | 76.5 dB                    | 30.2 dB                | 47 dB                      | 26 dB                       | 34 dB                           |
| 300 MHz         | 41 dB                             | 20.1 dB                        | 55.3 dB                | 75.3 dB                    | 28.7 dB                | 43.8 dB                    | 25.2 dB                     | 33.2 dB                         |
| 400 MHz         | 48 dB                             | 19.5 dB                        | 53.5 dB                | 73.5 dB                    | 26.2 dB                | 38.8 dB                    | 24 dB                       | 32 dB                           |
| 500 MHz         | 54.3 dB                           | 18.4 dB                        | 52 dB                  | 72 dB                      | 24.2 dB                | 35 dB                      | 23 dB                       | 31 dB                           |
| 625 MHz         | 61.5 dB                           | 17.4 dB                        |                        | 65 dB                      |                        | 31.1 dB                    |                             |                                 |

## Temperature Range

|                                 |                |
|---------------------------------|----------------|
| Installation Temperature Range: | -10°C To +60°C |
| Storage Temperature Range:      | -40°C To +70°C |
| Operating Temperature Range:    | -10°C To +60°C |

## Mechanical Characteristics

|                                      |            |
|--------------------------------------|------------|
| Maximum Recommended Pulling Tension: | 11.250 lbs |
| Min Bend Radius (Overall Cable):     | 1.040 in   |
| Plug /Jack Compatibility:            | RJ45       |

## Termination Interface

| Termination | Connection       | Durabilities |
|-------------|------------------|--------------|
| RJ45        | Mated Connection | 750 Cycles   |

## Standards

|                     |  |
|---------------------|--|
| UL Rating:          | Riser  |
| TIA/EIA Compliance: | Category 6A - ISO/IEC 11801-1, TIA 568.2-D   |
| IEEE Compliance:    | IEEE 802.3at type 1 and 2 (PoE) up to 30W, IEEE 802.3bt type 3 and 4 (PoE) up to 100W, CISCO (UPOE) up to 60W, Power over HDBaseTTM (POH) up to 100W |
| Other Standards:    | IEC 60603-7, ANSI/TIA 1096-A (formerly FCC Part 68-F)  |

## Applicable Environmental and Other Programs

|                                 |        |
|---------------------------------|--------|
| Environmental Space:            | Indoor |
| EU Directive 2002/95/EC (RoHS): | Yes    |

|                             |        |
|-----------------------------|--------|
| MII Order #39 (China RoHS): | EUP 50 |
|-----------------------------|--------|

## Suitability

|                       |     |
|-----------------------|-----|
| Suitability - Indoor: | Yes |
|-----------------------|-----|

## Flammability, LSOH, Toxicity Testing

|                    |                |
|--------------------|----------------|
| UL voltage rating: | 300 V RMS      |
| Safety Listing:    | c(UL)us Listed |

## Related Part Numbers

|                |                                       |
|----------------|---------------------------------------|
| Related Parts: | 10GX Modular Jacks, 10GX Patch Panels |
|----------------|---------------------------------------|

## Product Notes

|           |  |
|-----------|--|
| Notes:    | Weight: 0.029 lbs/ft. Cable with EquiBlock™ Barrier Technology                   |
| Labeling: | Labeling: Belden Part Number, Performance Acronym, Wiring Scheme and Cord Length |

## History

|                      |   |
|----------------------|---|
| Update and Revision: | Revision Number: 0.13 Revision Date: 01-14-2026 |
|----------------------|---|

© 2026 Belden, Inc

All Rights Reserved.

Although Belden makes every reasonable effort to ensure their accuracy at the time of this publication, information and specifications described here in are subject to error or omission and to change without notice, and the listing of such information and specifications does not ensure product availability.

Belden provides the information and specifications herein on an "ASIS" basis, with no representations or warranties, whether express, statutory or implied. In no event will Belden be liable for any damages (including consequential, indirect, incidental, special, punitive, or exemplary damages) whatsoever, even if Belden has been advised of the possibility of such damages, whether in an action under contract, negligence or any other theory, arising out of or in connection with the use, or inability to use, the information or specifications described herein.

All sales of Belden products are subject to Belden's standard terms and conditions of sale.

Belden believes this product to be in compliance with all applicable environmental programs as listed in the data sheet. The information provided is correct to the best of Belden's knowledge, information and belief at the date of its publication. This information is designed only as a general guide for the safe handling, storage, and any other operation of the product itself or the one that it becomes a part of. The Product Disclosure is not to be considered a warranty or quality specification. Regulatory information is for guidance purposes only. Product users are responsible for determining the applicability of legislation and regulations based on their individual usage of the product.