



Product: [C6D1108010](#)

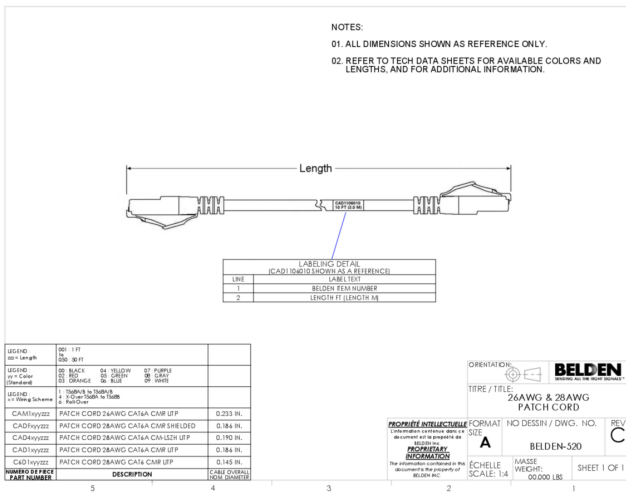
Cable Assemblies - CAT6 Performance Modular Cord, 10 ft. (3.0 m)



Product Description

CAT6 Performance Patch Cord UTP, 4 Pair, 28 AWG Stranded, CMR, T568A/B-T568A/B, Gray, 10 ft. (3.0 m)

Technical Drawing



Materials

Description	Material	Type
Plug	Polycarbonate - UL94V-0	RJ45
Boot	Polycarbonate - UL94V-0	
Front Connection	Phosphor Bronze with 50u inch Gold over Nickel Plating	Blades

Electrical Characteristics

Dielectric Strength:	1,000 V RMS @ 60 Hz for 1 minute
Current Rating:	1.500 A
Insulation Resistance:	500 M-Ohm Minimum
Max Contact Resistance:	20 mOhm

Voltage

UL Voltage Rating
300 V RMS

Temperature Range

Installation Temperature Range:	-10°C To +60°C
Storage Temperature Range:	-40°C To +70°C
Operating Temperature Range:	-10°C To +60°C

Mechanical Characteristics

Maximum Recommended Pulling Tension:	11.250 lbs
Min Bend Radius (Overall Cable):	0.580 in
Plug /Jack Compatibility:	RJ45

Termination Interface

Termination	Connection	Durabilities
RJ45	Mated Connection	750 Cycles

Standards

UL Rating:	Riser
TIA/EIA Compliance:	Category 6 - TIA-568.2-D ISO/IEC 11801-1
IEEE Compliance:	IEEE 802.3at type 1 and 2 (PoE) up to 30W, IEEE 802.3bt type 3 and 4 (PoE) up to 100W, CISCO (UPOE) up to 60W, Power over HDBaseTTM (POH) up to 100W
Other Standards:	IEC 60603-7, ANSI/TIA 1096-A (formerly FCC Part 68-F)

Applicable Environmental and Other Programs

Environmental Space:	Indoor
EU Directive 2002/95/EC (RoHS):	Yes
MII Order #39 (China RoHS):	EUP 50

Suitability

Suitability - Indoor:	Yes
-----------------------	-----

Flammability, LSOH, Toxicity Testing

UL voltage rating:	300 V RMS
Safety Listing:	c(UL)us Listed

Related Part Numbers

Related Parts:	CAT6+ Modular Jacks, CAT6+ RJ45 Couplers, CAT6+ Patch Panels
----------------	--

Product Notes

Notes:	Belden 28 AWG cords meet TIA performance standards at reduced lengths with an attenuation de-rating value of 1.95. For guidelines and limitations on using 28 AWG cord for power delivery, see TIA-TSB-184-A-1. Cable weight: 0.012 Lbs/ft. This product may be protected by one or more patents. For further information, please visit: https://www.belden.com/patents .
Labeling:	Labeling: Belden Part Number and Cord Length

History

Update and Revision:	Revision Number: 0.211 Revision Date: 10-24-2025
----------------------	--

© 2026 Belden, Inc

All Rights Reserved.

Although Belden makes every reasonable effort to ensure their accuracy at the time of this publication, information and specifications described here in are subject to error or omission and to change without notice, and the listing of such information and specifications does not ensure product availability.

Belden provides the information and specifications herein on an "ASIS" basis, with no representations or warranties, whether express, statutory or implied. In no event will Belden be liable for any damages (including consequential, indirect, incidental, special, punitive, or exemplary damages) whatsoever, even if Belden has been advised of the possibility of such damages, whether in an action under contract, negligence or any other theory, arising out of or in connection with the use, or inability to use, the information or specifications described herein.

All sales of Belden products are subject to Belden's standard terms and conditions of sale.

Belden believes this product to be in compliance with all applicable environmental programs as listed in the data sheet. The information provided is correct to the best of Belden's knowledge, information and belief at the date of its publication. This information is designed only as a general guide for the safe handling, storage, and any other operation of the product itself or the one that it becomes a part of. The Product Disclosure is not to be considered a warranty or quality specification. Regulatory information is for guidance purposes only. Product users are responsible for determining the applicability of legislation and regulations based on their individual usage of the product.