



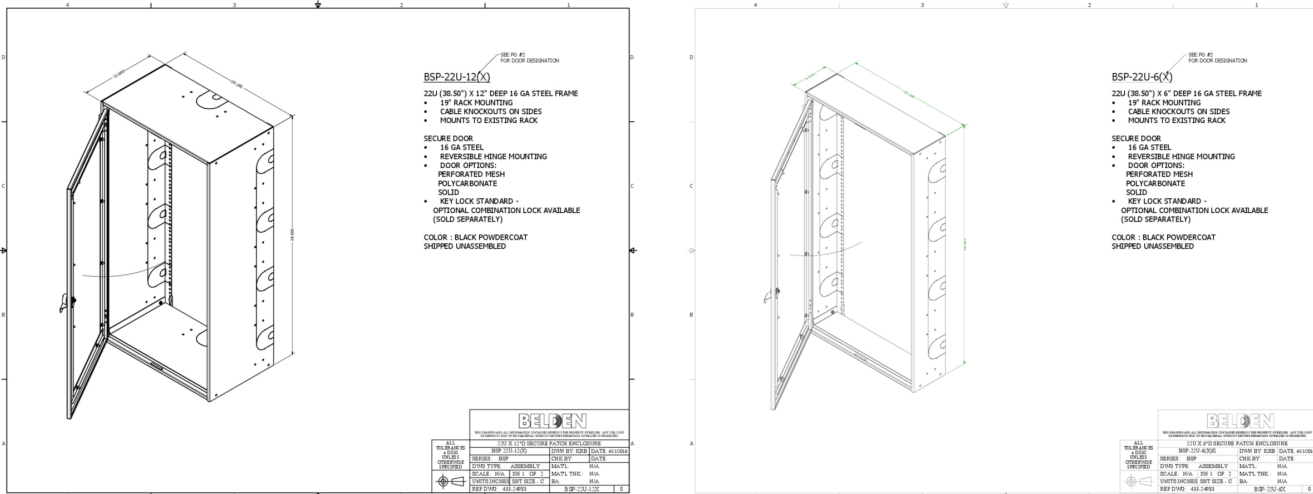
**Product:** [BSP-22U Secure Patch](#)

## Belden SecurePatch Open Rack Security Door

### Product Description

SecurePatch Open Rack Security Door

### Technical Drawing



### Technical Specifications

#### Application

Product Overview:	SecurePatch provides security for new and existing network components in an open 19" equipment rack. The SecurePatch cover provides a security solution to only the section of the rack space you need. Safeguard against unauthorized patch cord movement by retrofitting loaded equipment racks with the added security of a lockable door.
Benefits:	Adds security without network downtime
Benefits:	Controls rack access
Benefits:	Provides second-level lock security
Benefits:	Clamshell design allow back to back mounting of SecurePatch for securing front and rear
Benefits:	No need to re-terminate
Benefits:	Mounting flange allows one person to install each unit
Features:	Can be rack or Wall-Mounted on a backboard
Features:	Slotted mounting flange allows for single person install
Features:	Multiple side knockout options allow for low-high-capacity cable feed through
Features:	Connecting bracket enables 11U/22U units to be connected in any combination while allowing patch cord pass through from one unit to another
Product Specification:	16 gauge cold rolled steel 19" Rack-Mounting per EIA-310-D Finish black powdercoat Door option: steel, mesh or plexiglass Keyed locks standard on door Combination locks available (sold separately as BSP-LOCK-C1) Ships unassembled Easy to follow assembly instructions
Environmental Space:	Indoor

#### Mechanical Characteristics

Mounting:	Rack Mount 19" Horizontal
-----------	---------------------------

## Part Number

Packaging: Packaged in a cardboard box

### Variants

Part #	Height	Depth	Door Type
BSP-22U-6MK	38.5 in	6.0 in	Mesh Door
BSP-22U-12MK	38.5 in	12.0 in	Mesh Door
BSP-22U-12PK	38.5 in	12.0 in	Plexiglas Door
BSP-22U-12SK	38.5 in	12.0 in	Solid Steel Door
BSP-22U-6PK	38.5 in	6.0 in	Plexiglas Door
BSP-22U-6SK	38.5 in	6.0 in	Solid Steel Door

Update and Revision: Revision Number: 0.32 Revision Date: 04-16-2020

© 2020 Belden, Inc

All Rights Reserved.

Although Belden makes every reasonable effort to ensure their accuracy at the time of this publication, information and specifications described here in are subject to error or omission and to change without notice, and the listing of such information and specifications does not ensure product availability.

Belden provides the information and specifications herein on an "ASIS" basis, with no representations or warranties, whether express, statutory or implied. In no event will Belden be liable for any damages (including consequential, indirect, incidental, special, punitive, or exemplary damages) whatsoever, even if Belden has been advised of the possibility of such damages, whether in an action under contract, negligence or any other theory, arising out of or in connection with the use, or inability to use, the information or specifications described herein.

All sales of Belden products are subject to Belden's standard terms and conditions of sale.

Belden believes this product to be in compliance with all applicable environmental programs as listed in the data sheet. The information provided is correct to the best of Belden's knowledge, information and belief at the date of its publication. This information is designed only as a general guide for the safe handling, storage, and any other operation of the product itself or the one that it becomes a part of. The Product Disclosure is not to be considered a warranty or quality specification. Regulatory information is for guidance purposes only. Product users are responsible for determining the applicability of legislation and regulations based on their individual usage of the product.