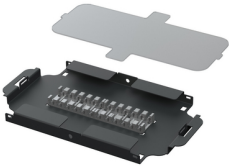




Product: [AX103912](#)



FiberExpress Ultra Splice Tray 8 inches

Product Description

FiberExpress Ultra Splice Tray 8 inches

Technical Specifications

Product Overview

Environmental Space:	Indoor
Suitable Applications:	FiberExpress Solutions, Backbone, Telecommunications Room, Main Distribution Room, Data Centers

Construction

Weight:	0.700 lbs
Height:	0.550 in
Width:	4.50 in
Length:	8.0 in

Physical Specifications

Max Capacity:	24 F
---------------	------

Mechanical Characteristics

Termination Type:	Front Sliding Drawer
-------------------	----------------------

Temperature Range

Operating Temperature Range:	-10°C To +60°C
Storage Temperature Range:	-40°C To +70°C

Product Material

Materials

Description	Material	Color
Splice Tray	Aluminum	Black
Splice Holder	Polypropylene	Gray
Cover	Plastic	Clear

Standards

EU Directive 2011/65/EU (RoHS 2):	Yes
MII Order #39 (China RoHS):	EUP 50

Related Part Numbers

Included Parts:	1 x Splice Tray with Adhesive Holder, 1x Splice Tray Cover
-----------------	--

Product Notes

Packaging:	Individually packaged in a plastic bag.
Notes:	For more information, please refer to our web site at http://www.belden.com .

History

Update and Revision:	Revision Number: 0.227 Revision Date: 03-06-2025
----------------------	--

© 2025 Belden, Inc
All Rights Reserved.

Although Belden makes every reasonable effort to ensure their accuracy at the time of this publication, information and specifications described here in are subject to error or omission and to change without notice, and the listing of such information and specifications does not ensure product availability.

Belden provides the information and specifications herein on an "ASIS" basis, with no representations or warranties, whether express, statutory or implied. In no event will Belden be liable for any damages (including consequential, indirect, incidental, special, punitive, or exemplary damages) whatsoever, even if Belden has been advised of the possibility of such damages, whether in an action under contract, negligence or any other theory, arising out of or in connection with the use, or inability to use, the information or specifications described herein.

All sales of Belden products are subject to Belden's standard terms and conditions of sale.

Belden believes this product to be in compliance with all applicable environmental programs as listed in the data sheet. The information provided is correct to the best of Belden's knowledge, information and belief at the date of its publication. This information is designed only as a general guide for the safe handling, storage, and any other operation of the product itself or the one that it becomes a part of. The Product Disclosure is not to be considered a warranty or quality specification. Regulatory information is for guidance purposes only. Product users are responsible for determining the applicability of legislation and regulations based on their individual usage of the product.