



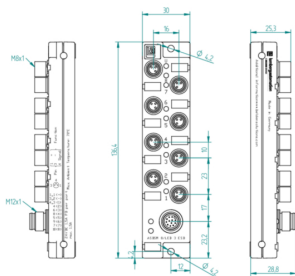
**Product:** [ASBSM 8/LED 3 ESD](#)

LiON-S passive, 8 ports, LED, M12 connector, ESD-capable material

**Product Description**

LiON-S passive, 8 ports, LED, M12 connector, ESD-capable material

**Technical Drawing**



ASBSM 8/LED 3 ESD

**Technical Specifications**

**Product Description**

Brand:	Belden
Product Sub Family:	LiON-S passive
Item Description:	ASBSM 8/LED 3 ESD
I/O Connection:	M8, 3-poles, A-coded
Number of Ports:	8
I/O Wiring Configuration:	single I/O per port
Control Cable Interface:	M12, 12-poles, A-coded

**General Data**

Housing Material:	PBT + ASA
Housing Color:	Black
Protection Degree / IP Rating**:	IP67
Potted:	No
Dimensions (W x H x D):	30 mm x 28,8 mm x 137 mm
Ambient Temperature (Operation)*:	-25 °C to 70 °C
Pollution Degree:	3 acc. to EN 60664-1, VDE 0110-1
Contact Base Material:	M8, CuSn   M12, CuZn
Contact Bearer Material:	PA
O-Ring Material:	FKM
Fastening Torque (I/O Connection):	M8: 0.3 Nm

## Power Supply

Status Indicator (System Supply):	LED green
Actuator Supply Voltage (Nominal):	24 V DC (SELV/PELV)
Actuator Supply Voltage (Range):	10 V DC to 30 V DC

## Digital Input Channels

Input Wiring:	2-, 3-, 4-wire
Sensor Type:	PNP

## Digital Output Channels

Output Wiring:	2-, 3-wire
Galvanically Isolated:	No

## Port Channels

Current per Connector:	max. 1,5 A
Current per Module:	max. 1,5 A
Status Indicator (Port):	Status Indicator (Port)

## Safety & Environmental Compliance

CE:	Yes
RoHS Compliant:	Yes
China RoHS-Compliant:	Yes

## Notes

Protection Degree / IP Rating Note:	** only if mounted and locked in combination with Hirschmann / Lumberg Automation connector.
System Power Supply Connection Note:	*do not connect / disconnect under voltage!

## Variants

Item #	Item Description
106561	ASBSM 8/LED 3 ESD

Update and Revision:	Revision Number: 0.27 Revision Date: 03-04-2023
----------------------	-------------------------------------------------

© 2024 Belden, Inc

All Rights Reserved.

Although Belden makes every reasonable effort to ensure their accuracy at the time of this publication, information and specifications described here in are subject to error or omission and to change without notice, and the listing of such information and specifications does not ensure product availability.

Belden provides the information and specifications herein on an "ASIS" basis, with no representations or warranties, whether express, statutory or implied. In no event will Belden be liable for any damages (including consequential, indirect, incidental, special, punitive, or exemplary damages) whatsoever, even if Belden has been advised of the possibility of such damages, whether in an action under contract, negligence or any other theory, arising out of or in connection with the use, or inability to use, the information or specifications described herein.

All sales of Belden products are subject to Belden's standard terms and conditions of sale.

Belden believes this product to be in compliance with all applicable environmental programs as listed in the data sheet. The information provided is correct to the best of Belden's knowledge, information and belief at the date of its publication. This information is designed only as a general guide for the safe handling, storage, and any other operation of the product itself or the one that it becomes a part of. The Product Disclosure is not to be considered a warranty or quality specification. Regulatory information is for guidance purposes only. Product users are responsible for determining the applicability of legislation and regulations based on their individual usage of the product.