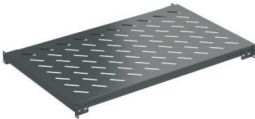




Product: [AP900022](#)

Fixed Shelf



Product Description

Regular Fixed Shelf with perforation 19" for AP900020. Mounted on each corner to the frame for maximum stability

Technical Specifications

Application

Product Overview:	*Cabinet accessory need to be purchased separately
Features:	Regular 19" Fixed Shelf for supporting equipment up to 50 kg
Environmental Space:	Indoor

Construction and Dimensions

Width:	440 mm
Depth:	410 mm

Mechanical Characteristics

Load Capacity - Static:	50 kg
-------------------------	-------

Environmental and Overall Characteristics

Finish:	Powder Coated
Material:	Cold rolled powder coated steel

Related Part Numbers

Part Number:	AP900022
Packaging:	Individually packaged
Update and Revision:	Revision Number: 0.24 Revision Date: 04-08-2022

© 2025 Belden, Inc
All Rights Reserved.

Although Belden makes every reasonable effort to ensure their accuracy at the time of this publication, information and specifications described here in are subject to error or omission and to change without notice, and the listing of such information and specifications does not ensure product availability.

Belden provides the information and specifications herein on an "ASIS" basis, with no representations or warranties, whether express, statutory or implied. In no event will Belden be liable for any damages (including consequential, indirect, incidental, special, punitive, or exemplary damages) whatsoever, even if Belden has been advised of the possibility of such damages, whether in an action under contract, negligence or any other theory, arising out of or in connection with the use, or inability to use, the information or specifications described herein.

All sales of Belden products are subject to Belden's standard terms and conditions of sale.

Belden believes this product to be in compliance with all applicable environmental programs as listed in the data sheet. The information provided is correct to the best of Belden's knowledge, information and belief at the date of its publication. This information is designed only as a general guide for the safe handling, storage, and any other operation of the product itself or the one that it becomes a part of. The Product Disclosure is not to be considered a warranty or quality specification. Regulatory information is for guidance purposes only. Product users are responsible for determining the applicability of legislation and regulations based on their individual usage of the product.