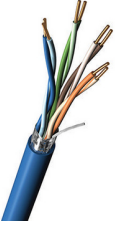


Part Number: 7903A

DataTuff® 5e, 4 Pr #22 Sol BC, PO Ins, OS, PVC Jkt, PLTC CMR



Product Description

Industrial Ethernet Cat 5e, 4 Pair 22AWG (Solid) Bare Copper, PO Insulation, Overall Beldfoil® Shield, PVC Outer Jacket, PLTC CMR

Technical Specifications

Product Overview

Suitable Applications:	Industrial Ethernet Cable, Harsh Environments, EtherNet/IP™, 350MHz Enhanced Category 5e, Gigabit Ethernet, 100BaseTX, 100BaseVG ANYLAN, 155ATM, 622ATM, NTSC/PAL Component or Composite Video, AES/EBU Digital Audio, AES51, RS-422, CMX - Outdoor, RJ-45 Compatible, Flexible Applications
------------------------	--

Physical Characteristics (Overall)

Conductor

AWG	Material	No. of Pairs
22	BC - Bare Copper	4

Conductor Count:	8
Total Number of Pairs:	4

Insulation

Material	PO - Polyolefin
Bonded-Pair:	Yes

Color Chart

Number	Color
1	White/Blue Stripe & Blue
2	White/Orange Stripe & Orange
3	White/Green Stripe & Green
4	White/Brown Stripe & Brown

Outer Shield Material

Type	Material	Material Trade Name	Coverage [%]	Drainwire Material	Drainwire AWG
Tape	Aluminum Foil-Polyester Tape	Beldfoil®	100.0 %	TC - Tinned Copper	22

Outer Jacket Material

Material	Nominal Diameter	Ripcord
Industrial Grade PVC - Polyvinyl Chloride	0.335 in	No

Electrical Characteristics

Conductor DCR

Max. Conductor DCR	Max. DCR Unbalance
9 Ohm/1000ft	3.0 %

Capacitance

Max. Capacitance Unbalance	Nom. Mutual Capacitance
66 pF/ft	15 pF/ft

Delay

Max. Delay	Max. Delay Skew	Nominal Velocity of Propagation (VP) [%]
510 ns/100m	25 ns/100m	70.0 %

High Freq

Frequency [MHz]	Max. Insertion Loss (Attenuation)	Min. NEXT [dB]	Min. PSNEXT [dB]	Min. ACR [dB]	Min. PSACR [dB]	Min. ACRF (ELFEXT) [dB]	Min. PSACRF (PSELFEXT) [dB]	Min. RL (Return Loss) [dB]	Max./Min. Input Impedance (unFitted)	Max./Min. Fitted Impedance
1 MHz	2 dB/100m	65.3 dB	62.3 dB	63 dB	60 dB	63.8 dB	60.8 dB	20 dB	100 ± 15 Ohm	100 ± 15
4 MHz	4.1 dB/100m	56.3 dB	53.3 dB	51 dB	49 dB	51.7 dB	48.7 dB	23 dB	100 ± 15 Ohm	100 ± 15
8 MHz	5.8 dB/100m	51.8 dB	48.8 dB	46 dB	43 dB	45.7 dB	42.7 dB	24.5 dB	100 ± 15 Ohm	100 ± 15
10 MHz	6.5 dB/100m	50.3 dB	47.3 dB	43 dB	41 dB	43.8 dB	40.8 dB	25 dB	100 ± 15 Ohm	100 ± 15
16 MHz	8.2 dB/100m	47.3 dB	44.3 dB	39 dB	36 dB	39.7 dB	36.7 dB	25 dB	100 ± 15 Ohm	100 ± 15
20 MHz	9.3 dB/100m	45.8 dB	42.8 dB	36.5 dB	33.5 dB	37.7 dB	34.7 dB	25 dB	100 ± 15 Ohm	100 ± 15
25 MHz	10.4 dB/100m	44.3 dB	41.3 dB	33.9 dB	30.9 dB	35.8 dB	32.8 dB	24.3 dB	100 ± 15 Ohm	100 ± 15
31.25 MHz	11.7 dB/100m	42.9 dB	39.9 dB	31 dB	28 dB	33.9 dB	30.9 dB	23.6 dB	100 ± 15 Ohm	100 ± 15
62.5 MHz	17 dB/100m	38.4 dB	35.4 dB	22 dB	19 dB	27.8 dB	24.8 dB	21.5 dB	100 ± 15 Ohm	100 ± 15
100 MHz	22 dB/100m	35.3 dB	32.3 dB	14 dB	11 dB	23.8 dB	20.8 dB	20.1 dB	100 ± 15 Ohm	
155 MHz	28.1 dB/100m	32.5 dB	29.5 dB	4.4 dB	1.4 dB	19.9 dB	16.9 dB	18.8 dB	100 ± 25 Ohm	
200 MHz	32 dB/100m	30.8 dB	27.8 dB	4 dB	1 dB	17.7 dB	14.7 dB	18.0 dB	100 ± 25 Ohm	
250 MHz	36.9 dB/100m	29.3 dB	26.3 dB			15.8 dB	12.8 dB	18 dB	100 ± 25 Ohm	
300 MHz	41.0 dB/100m	28.2 dB	25.1 dB			14.2 dB	11.2 dB	17.3 dB	100 ± 25 Ohm	
310 MHz	41.8 dB/100m	27.9 dB	24.9 dB			13.9 dB	10.9 dB	16.8 dB	100 ± 25 Ohm	
350 MHz	44.9 dB/100m	27.2 dB	24.1 dB			12.9 dB	9.9 dB	16.3 dB	100 ± 25 Ohm	

Voltage

UL Voltage Rating
300 V RMS

Temperature Range

Installation Temp Range:	-25°C To +75°C
UL Temp Rating:	75°C
Storage Temp Range:	-25°C To +75°C
Operating Temp Range:	-40°C To +75°C

Mechanical Characteristics

Max Recommended Pulling Tension:	40 lbs
Min Bend Radius/Minor Axis:	3.38 in

Standards

NEC/(UL) Specification:	CMR, PLTC
CEC/C(UL) Specification:	CMR
ISO/IEC Compliance:	ISO/IEC 11801 Cat 5e
Telecommunications Standards:	TIA 568-C.2 Category 5e

Suitability

Suitability - Indoor:	Yes
Suitability - Oil Resistance:	Yes
Suitability - Outdoor:	Yes
Suitability - Sunlight Resistance:	Yes

Flammability, LSOH, Toxicity Testing

UL Flammability:	UL1666 Riser
CSA Flammability:	FT4

Part Number

Variants

Item #	Color	UPC	Length
7903A 0101000	Black	612825421917	1,000 ft
7903A 0105000	Black	612825421931	5,000 ft

History

Update and Revision: Revision Number: 0.16 Revision Date: 08-22-2019

© 2019 Belden, Inc

All Rights Reserved.

Although Belden makes every reasonable effort to ensure their accuracy at the time of this publication, information and specifications described here in are subject to error or omission and to change without notice, and the listing of such information and specifications does not ensure product availability.

Belden provides the information and specifications herein on an "ASIS" basis, with no representations or warranties, whether express, statutory or implied. In no event will Belden be liable for any damages (including consequential, indirect, incidental, special, punitive, or exemplary damages) whatsoever, even if Belden has been advised of the possibility of such damages, whether in an action under contract, negligence or any other theory, arising out of or in connection with the use, or inability to use, the information or specifications described herein.

All sales of Belden products are subject to Belden's standard terms and conditions of sale.

Belden believes this product to be in compliance with all applicable environmental programs as listed in the data sheet. The information provided is correct to the best of Belden's knowledge, information and belief at the date of its publication. This information is designed only as a general guide for the safe handling, storage, and any other operation of the product itself or the one that it becomes a part of. The Product Disclosure is not to be considered a warranty or quality specification. Regulatory information is for guidance purposes only. Product users are responsible for determining the applicability of legislation and regulations based on their individual usage of the product.