

XCPE244812-S02:
8U PASSIVE CEILING ENCLOSURE WITH
4 ACCESS PORTS 24"W X 48"H X 12"D

ALUMINUM CONSTRUCTION WITH RIVETS FROM THE OUTSIDE

4U ENCLOSURE MOUNTED EQUIPMENT MOUNTING BRACKETS
4U DOOR MOUNTED EQUIPMENT MOUNTING BRACKETS

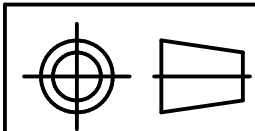
DOOR WITH CONTINOUS HINGE, 1/4 TURN LATCHES,
GAS SHOCKS ON LEFT AND RIGHT, AND FOAM GASKET AROUND
PERIMETER

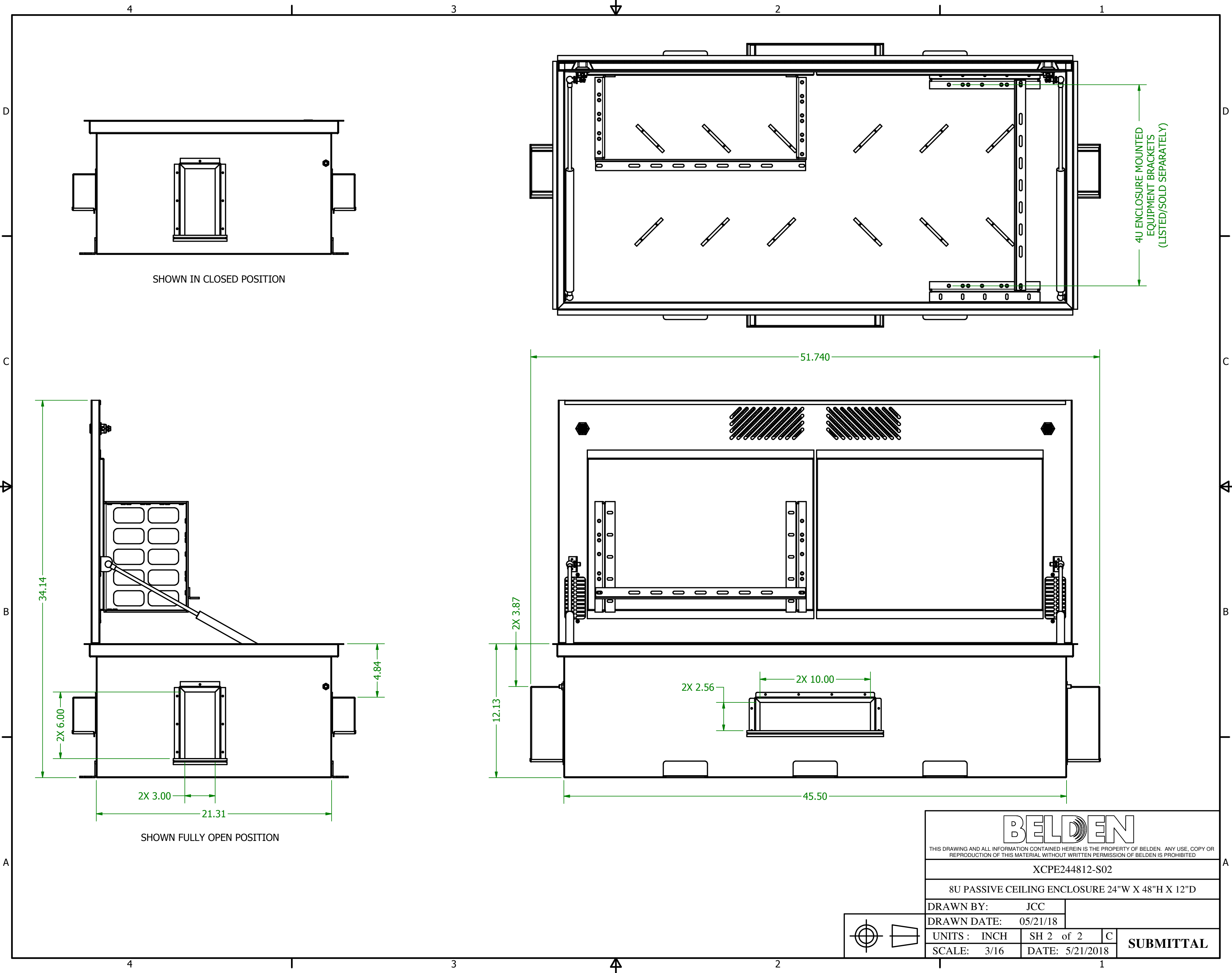
CABLE ACCESS ON ALL 4 FACES WITH COVER BRACKETS
AND EDGE GUARD TO PROTECT CABLE. FOAM SEAL KIT INCLUDED

FINISH: FLAT EPOXY WHITE POWDERCOAT

EIA-310-D compliant
UL listed UL 2043

<div>BELDEN</div> <div>THIS DRAWING AND ALL INFORMATION CONTAINED HEREIN IS THE PROPERTY OF BELDEN. ANY USE, COPY OR REPRODUCTION OF THIS MATERIAL WITHOUT WRITTEN PERMISSION OF BELDEN IS PROHIBITED</div>			
XCPE244812-S02			
8U PASSIVE CEILING ENCLOSURE 24"W X 48"H X 12"D			
DRAWN BY: JCC			
DRAWN DATE: 05/21/18			
UNITS: INCH	SH 1 of 2	C	SUBMITTAL
SCALE: 3/16	DATE: 5/21/2018		





BELDEN			
THIS DRAWING AND ALL INFORMATION CONTAINED HEREIN IS THE PROPERTY OF BELDEN. ANY USE, COPY OR REPRODUCTION OF THIS MATERIAL WITHOUT WRITTEN PERMISSION OF BELDEN IS PROHIBITED.			
XCPE244812-S02			
8U PASSIVE CEILING ENCLOSURE 24"W X 48"H X 12"D			
DRAWN BY: JCC			
DRAWN DATE: 05/21/18			
UNITS: INCH	SH 2 of 2	C	SUBMITTAL
SCALE: 3/16	DATE: 5/21/2018		