

XCPE242412-S02:
CEILING MOUNTED PASSIVE ENCLOSURE 24"W X 24"H X 12"D

ALUMINUM CONSTRUCTION WITH RIVETS FROM THE OUTSIDE.

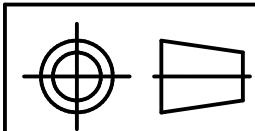
DOOR WITH CONTINOUS HINGE, 1/4 TURN LATCHES, DOOR STAY ON LEFT AND RIGHT, AND FOAM GASKET AROUND PERIMETER.

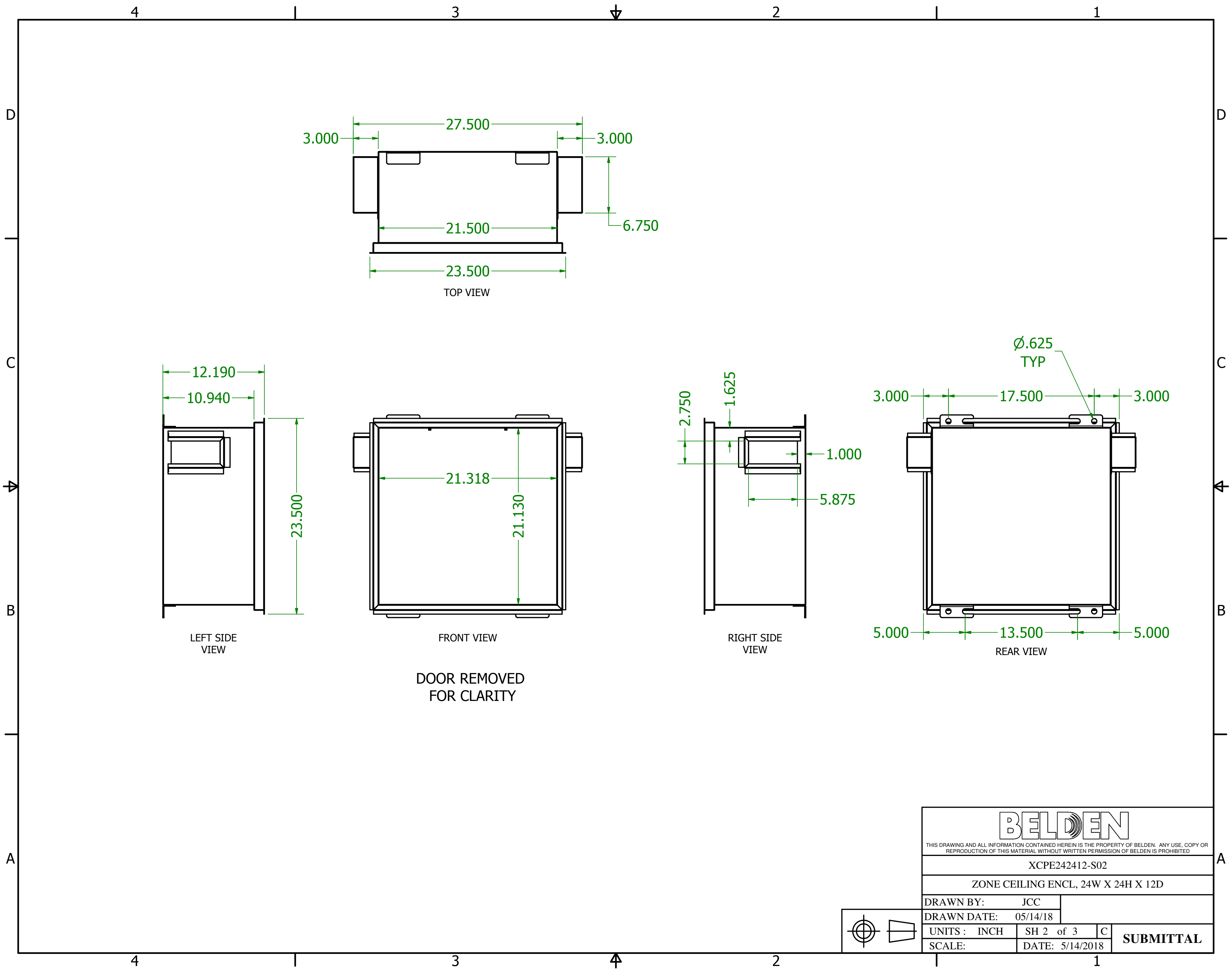
CABLE ACCESS IN THE LEFT TO RIGHT ENDS WITH COVER BRACKETS AND EDGE GUARD TO PROTECT CABLE. FOAM SEAL KIT INCLUDED

FINISH: FLAT EPOXY WHITE POWDERCOAT

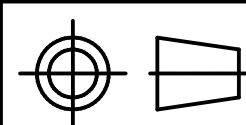
EIA-310-D compliant
UL listed UL 2043

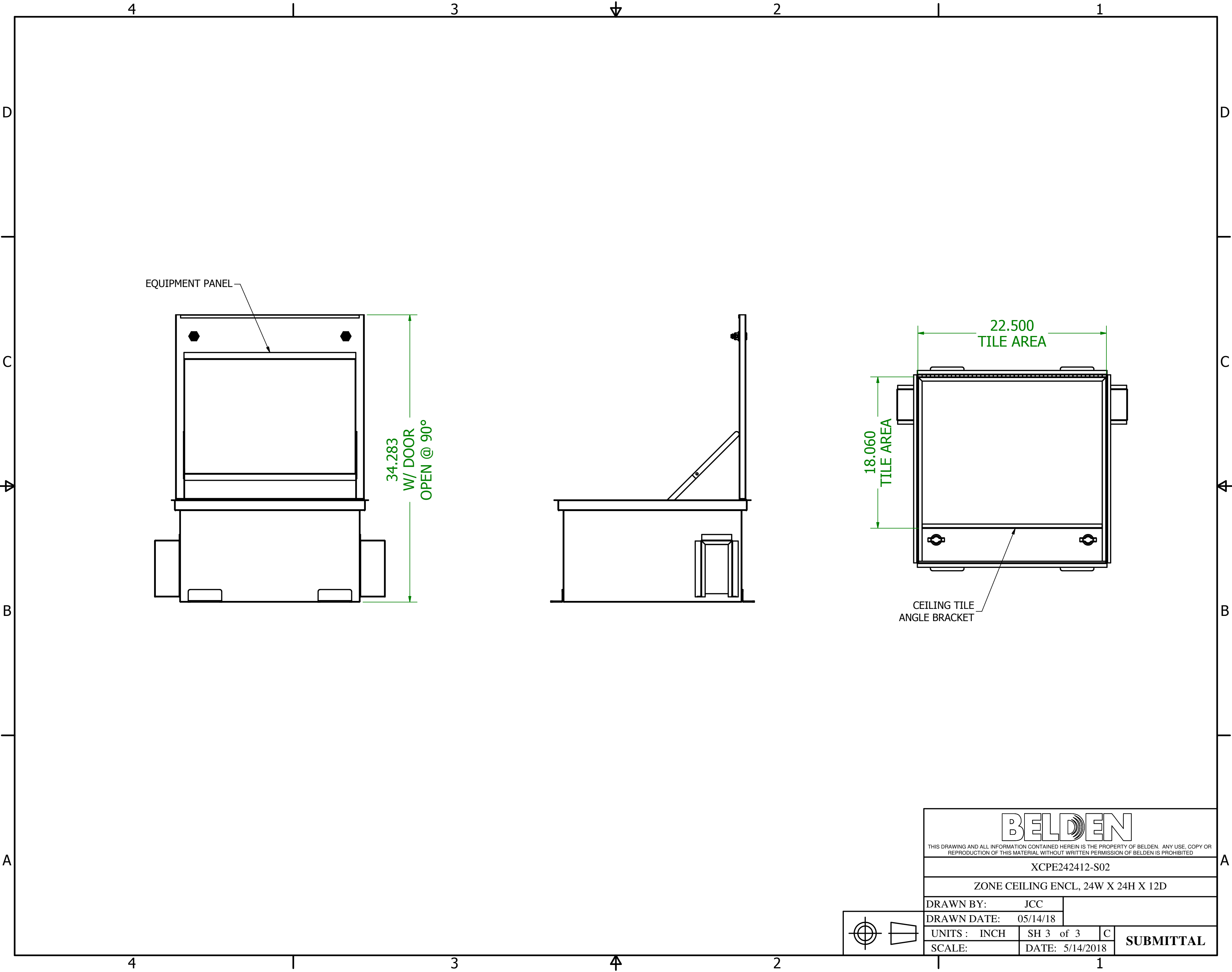
BELDEN <small>THIS DRAWING AND ALL INFORMATION CONTAINED HEREIN IS THE PROPERTY OF BELDEN. ANY USE, COPY OR REPRODUCTION OF THIS MATERIAL WITHOUT WRITTEN PERMISSION OF BELDEN IS PROHIBITED.</small>			
XCPE242412-S02			
ZONE CEILING ENCL, 24WX24HX12D			
DRAWN BY: JCC			
DRAWN DATE: 05/14/18			
UNITS: INCH	SH 1 of 3	C	SUBMITTAL
SCALE:	DATE: 5/14/2018		





BELDEN <small>THIS DRAWING AND ALL INFORMATION CONTAINED HEREIN IS THE PROPERTY OF BELDEN. ANY USE, COPY OR REPRODUCTION OF THIS MATERIAL WITHOUT WRITTEN PERMISSION OF BELDEN IS PROHIBITED.</small>			
XCPE242412-S02			
ZONE CEILING ENCL, 24W X 24H X 12D			
DRAWN BY: JCC			
DRAWN DATE: 05/14/18			
UNITS: INCH	SH 2 of 3	C	SUBMITTAL
SCALE:	DATE: 5/14/2018		





BELDEN <small>THIS DRAWING AND ALL INFORMATION CONTAINED HEREIN IS THE PROPERTY OF BELDEN. ANY USE, COPY OR REPRODUCTION OF THIS MATERIAL WITHOUT WRITTEN PERMISSION OF BELDEN IS PROHIBITED.</small>			
XCPE242412-S02			
ZONE CEILING ENCL, 24W X 24H X 12D			
DRAWN BY: JCC			
DRAWN DATE: 05/14/18			
UNITS: INCH	SH 3 of 3	C	SUBMITTAL
SCALE:	DATE: 5/14/2018		

