

**XCPE242412-S01:**  
CEILING MOUNTED PASSIVE ENCLOSURE 24"W X 24"H X 12"D

ALUMINUM CONSTRUCTION WITH RIVETS FROM THE OUTSIDE.

INCLUDES 5U EQUIPMENT BRACKETS.

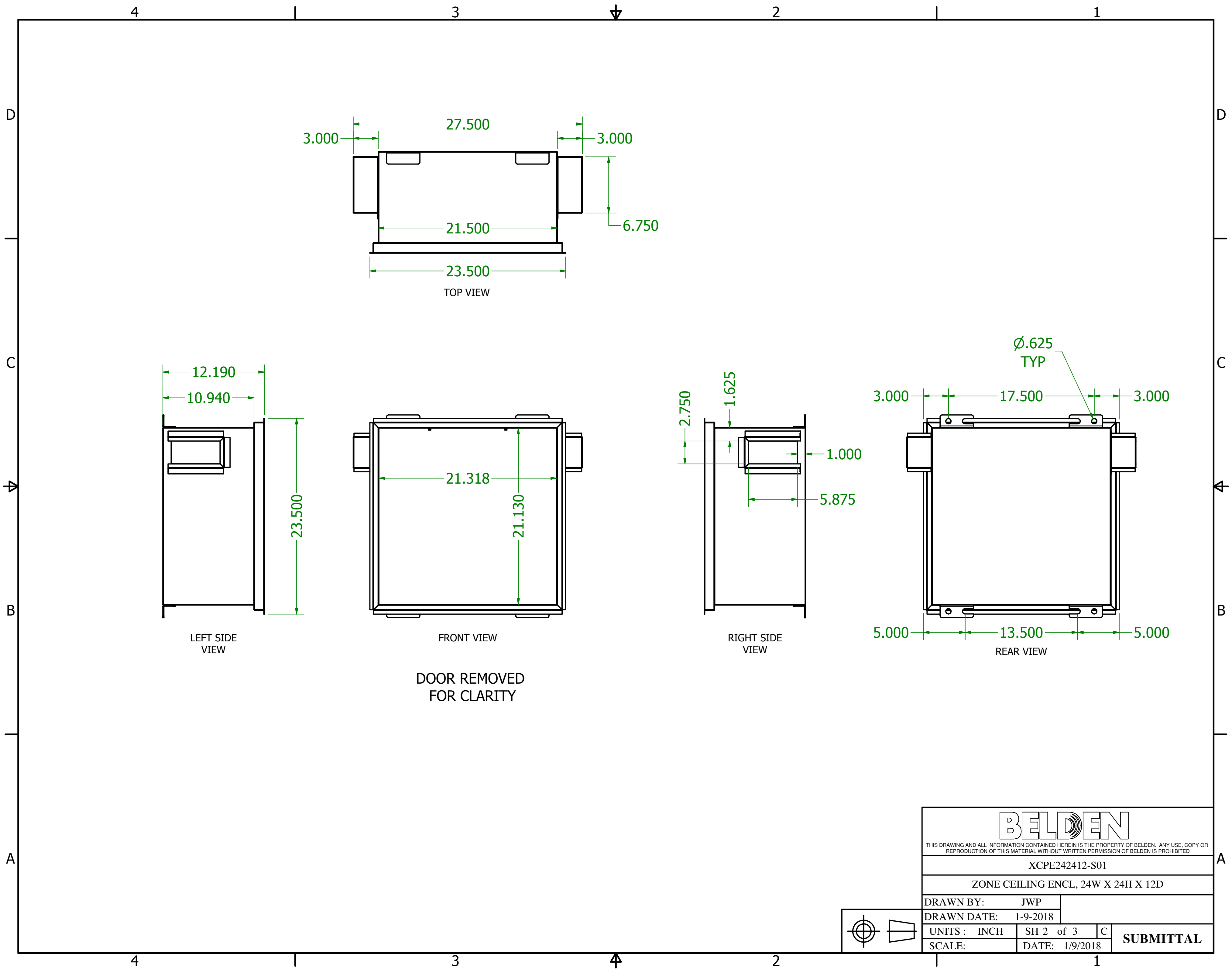
DOOR WITH CONTINUOUS HINGE, 1/4 TURN LATCHES, DOOR STAY ON LEFT AND RIGHT, AND FOAM GASKET AROUND PERIMETER.

CABLE ACCESS IN THE LEFT TO RIGHT ENDS WITH COVER BRACKETS AND EDGE GUARD TO PROTECT CABLE. FOAM SEAL KIT INCLUDED

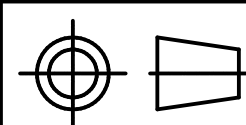
FINISH: FLAT EPOXY WHITE POWDERCOAT

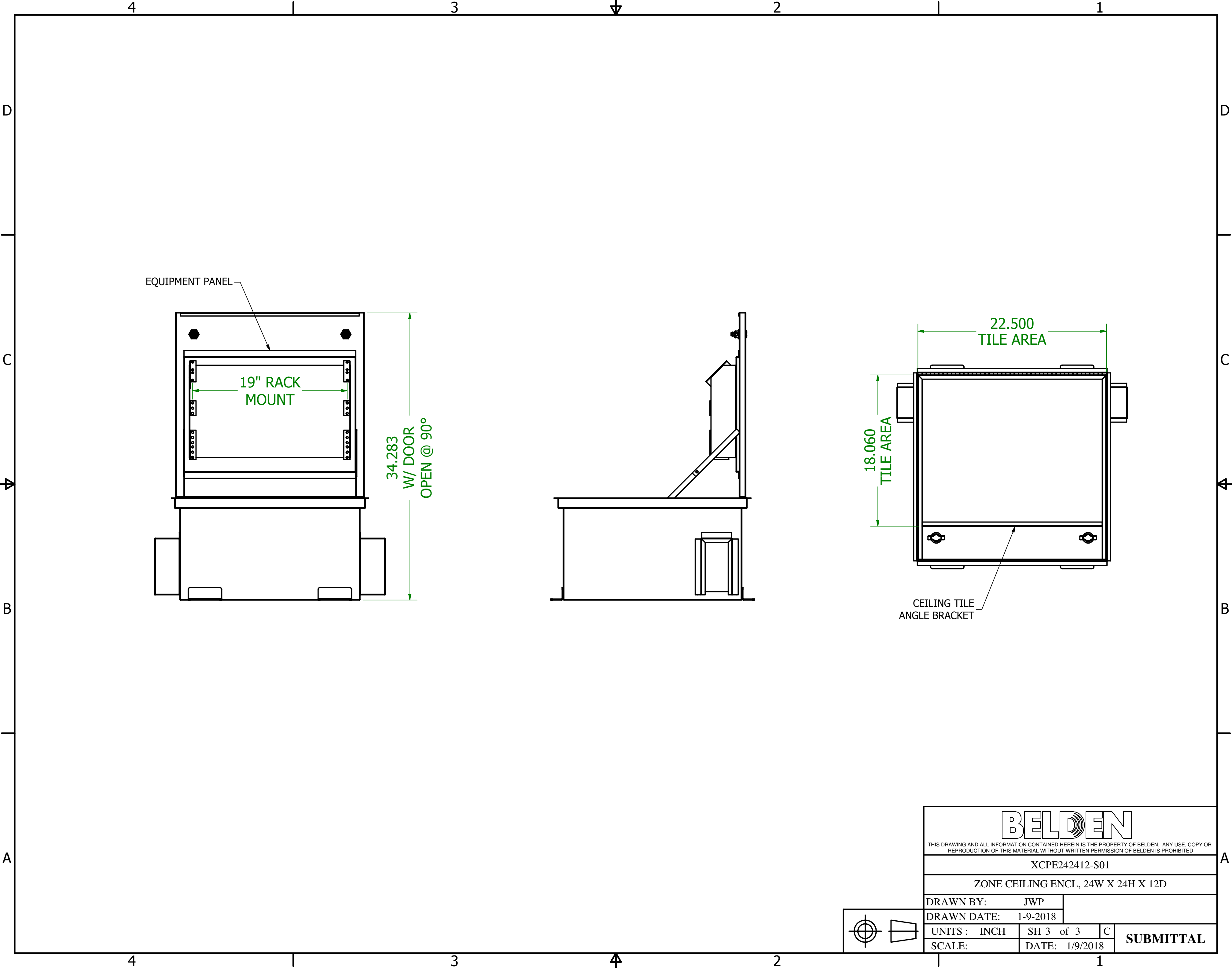
EIA-310-D compliant  
UL listed UL 2043

<b>BELDEN</b> <small>THIS DRAWING AND ALL INFORMATION CONTAINED HEREIN IS THE PROPERTY OF BELDEN. ANY USE, COPY OR REPRODUCTION OF THIS MATERIAL WITHOUT WRITTEN PERMISSION OF BELDEN IS PROHIBITED.</small>			
XCPE242412-S01			
ZONE CEILING ENCL, 24WX24HX12D			
DRAWN BY: JWP			
DRAWN DATE: 1-9-2018			
UNITS: INCH	SH 1 of 3	C	<b>SUBMITTAL</b>
SCALE:	DATE: 1/9/2018		



<b>BELDEN</b> <small>THIS DRAWING AND ALL INFORMATION CONTAINED HEREIN IS THE PROPERTY OF BELDEN. ANY USE, COPY OR REPRODUCTION OF THIS MATERIAL WITHOUT WRITTEN PERMISSION OF BELDEN IS PROHIBITED.</small>			
XCPE242412-S01			
ZONE CEILING ENCL, 24W X 24H X 12D			
DRAWN BY: JWP			
DRAWN DATE: 1-9-2018			
UNITS: INCH	SH 2 of 3	C	SUBMITTAL
SCALE:	DATE: 1/9/2018		





<b>BELDEN</b>			
THIS DRAWING AND ALL INFORMATION CONTAINED HEREIN IS THE PROPERTY OF BELDEN. ANY USE, COPY OR REPRODUCTION OF THIS MATERIAL WITHOUT WRITTEN PERMISSION OF BELDEN IS PROHIBITED.			
XCPE242412-S01			
ZONE CEILING ENCL, 24W X 24H X 12D			
DRAWN BY: JWP			
DRAWN DATE: 1-9-2018			
UNITS : INCH	SH 3 of 3	C	SUBMITTAL
SCALE:	DATE: 1/9/2018		