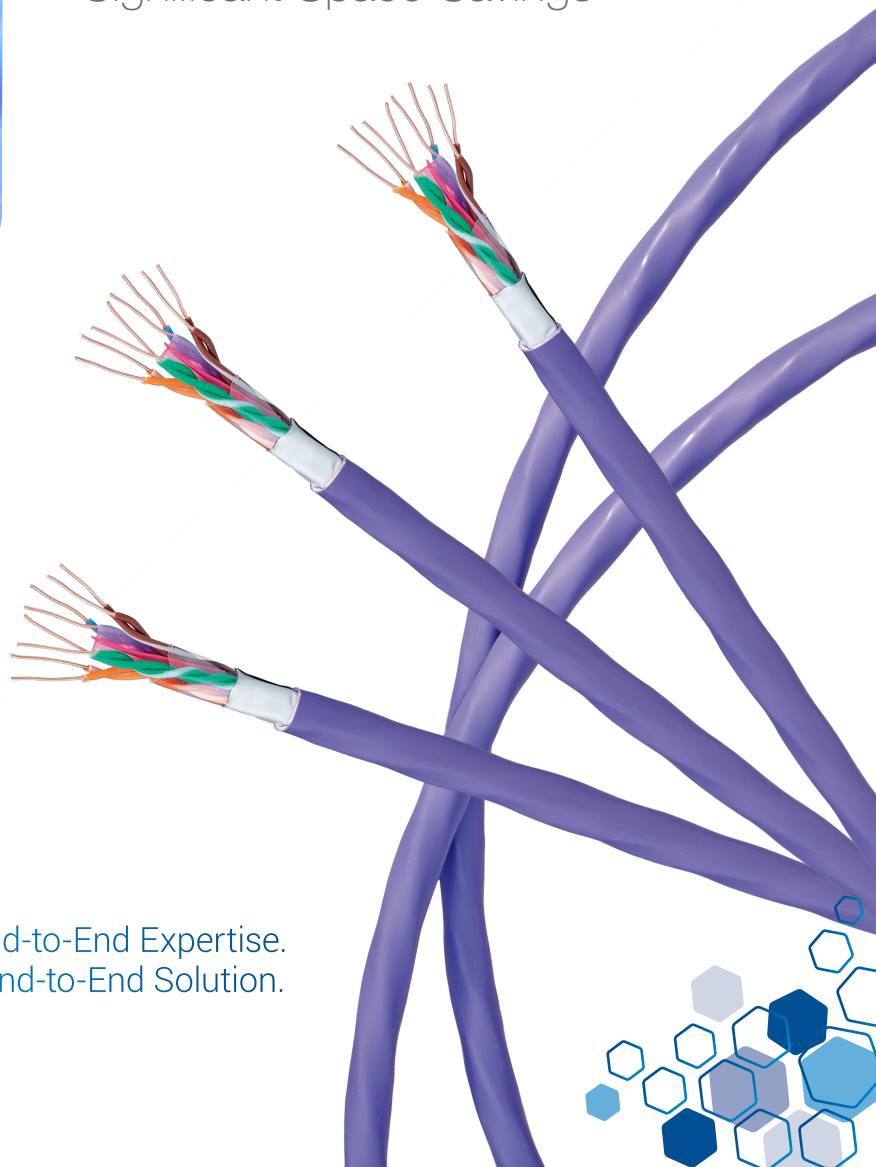


1683ENH Category 6A U/UTP Cables

Future Proof Cabling
Lowest TCO on Cat 6A U/UTP
Significant Space Savings



**Be certain.
Belden.**

Our End-to-End Expertise.
Your End-to-End Solution.

Lower Your TCO and Future Proof Your Building Network

1683ENH Category 6A U/UTP Cables

From security and life safety to lighting and building automation, IP convergence connects systems to the network – but shrinking budgets make it hard for enterprises to keep up. Reduced network performance or delayed convergence investments become acceptable in an effort to reduce upfront costs; however, total cost of ownership (TCO) expenses increase as a result.

Belden makes it possible to cost-effectively futureproof enterprise networks with its new premise horizontal cabling system for 10G Ethernet applications. Providing the best possible TCO compared to other UTP cables, Belden's 1683ENH Category 6A U/UTP cables help enterprises take advantage of IP convergence and 10 Gb/s speeds at a reasonable cost.

Benefits

- Lowest TCO expenses among Category 6A, 6 and 5e UTP cables
- Significant space savings
- No future cabling upgrades needed
- Improved building management and control via converged networks
- Accommodation of 10 Gb/s speeds

Features

- 500 MHz performance
- Smaller diameter takes up less space and weighs less
- Easy-to-separate pairs require fewer twists
- Small bend radius works well in tight spaces and workstations
- Easy-to-remove barrier tape and spline offer fast installation

Applications

- 10GBASE-T Ethernet
- Local area networks (LANs)
- 10G applications requiring cable to support devices with lifespans of 10+ years

Our End-to-End Expertise.
Your End-to-End Solution.



Technical Information

Providing affordable Category 6A performance and the lowest total cost of ownership as compared to other Category 6A, Category 6 and Category 5e cabling, Belden's 1683ENH Category 6A U/UTP cables are offered in standard blue and gray. Violet, white, orange and yellow are also available. Accommodating up to 10GB/s speeds and providing great installation benefits, this cabling offers the best possible futureproofing performance.

Ordering Information

Description	Belden Part Number
-------------	--------------------

1683ENH • Category 6A • 4-Pair, 23 AWG, LSZH

Color	Length (m)	Reel
Blue	500	1683ENH.00500
Purple	500	1683ENH.01500
Color	Length (m)	Reel-in-Box
Blue	100	1683ENH.00A100
Purple	100	1683ENH.01A100

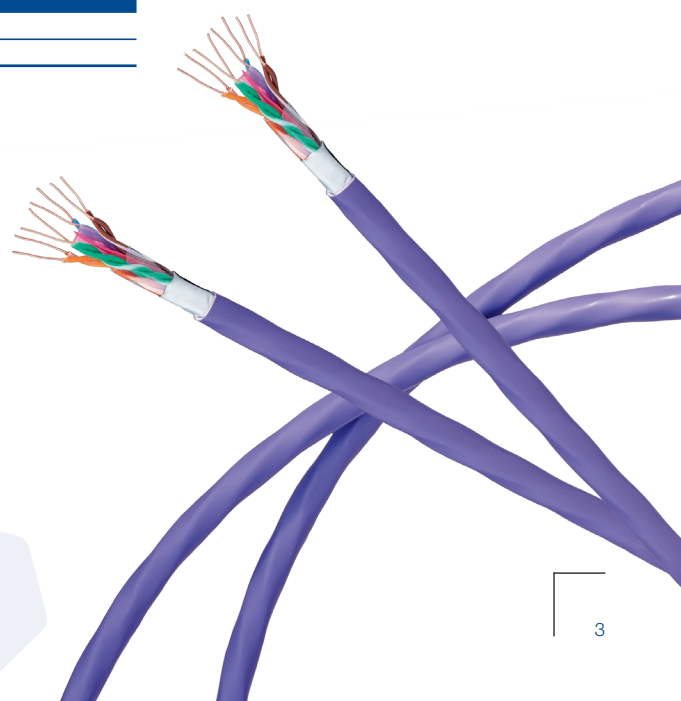
1683ENH • Category 6A • 4-Pair, 23 AWG, LSZH, IEC 60332-3-24*

Color	Length (m)	Reel
Blue	500	1683ENC.00500
Purple	500	1683ENC.01500
Color	Length (m)	Reel-in-Box
Blue	100	1683ENC.00A100
Purple	100	1683ENC.01A100

1683E • Category 6A • 4-Pair, 23 AWG, LSZH, PVC*

Color	Length (m)	Reel
Blue	500	1683E.00500
Purple	500	1683E.01500
Color	Length (m)	Reel-in-Box
Blue	100	1683E.00A100
Purple	100	1683E.01A100

* Expected to be available in Q1 2016.



Always Stay Ahead with Belden

In a highly competitive environment, it is crucial to have reliable partners who are able to add value to your business. When it comes to signal transmissions, Belden is the number one solutions provider. We understand your business and want to know your specific challenges and targets to see how effective signal transmission solutions can push you ahead of the competition. By combining the strengths of our five leading brands, Belden, GarrettCom, Hirschmann, Lumberg Automation and Tofino Security, we are able to offer the solution you need. Today it may be a single cable, a switch or a connector, thus solving a specific issue; tomorrow it can be a complex range of integrated applications, systems and solutions.

About Belden

Belden Inc., a global leader in high quality, end-to-end signal transmission solutions, delivers a comprehensive product portfolio designed to meet the mission-critical network infrastructure needs of industrial, enterprise and broadcast markets. With innovative solutions targeted at reliable and secure transmission of rapidly growing amounts of data, audio and video needed for today's applications, Belden is at the center of the global transformation to a connected world. Founded in 1902, the company is headquartered in St. Louis, USA, and has manufacturing capabilities in North and South America, Europe and Asia.

For more information, visit us at www.beldensolutions.com and follow us on Twitter [@BeldenInc](https://twitter.com/BeldenInc).



Belden, Belden Sending All The Right Signals, GarrettCom, Hirschmann, Lumberg Automation, Tofino Security and the Belden logo are trademarks or registered trademarks of Belden Inc. or its affiliated companies in the United States and other jurisdictions. Belden and other parties may also have trademark rights in other terms used herein.