

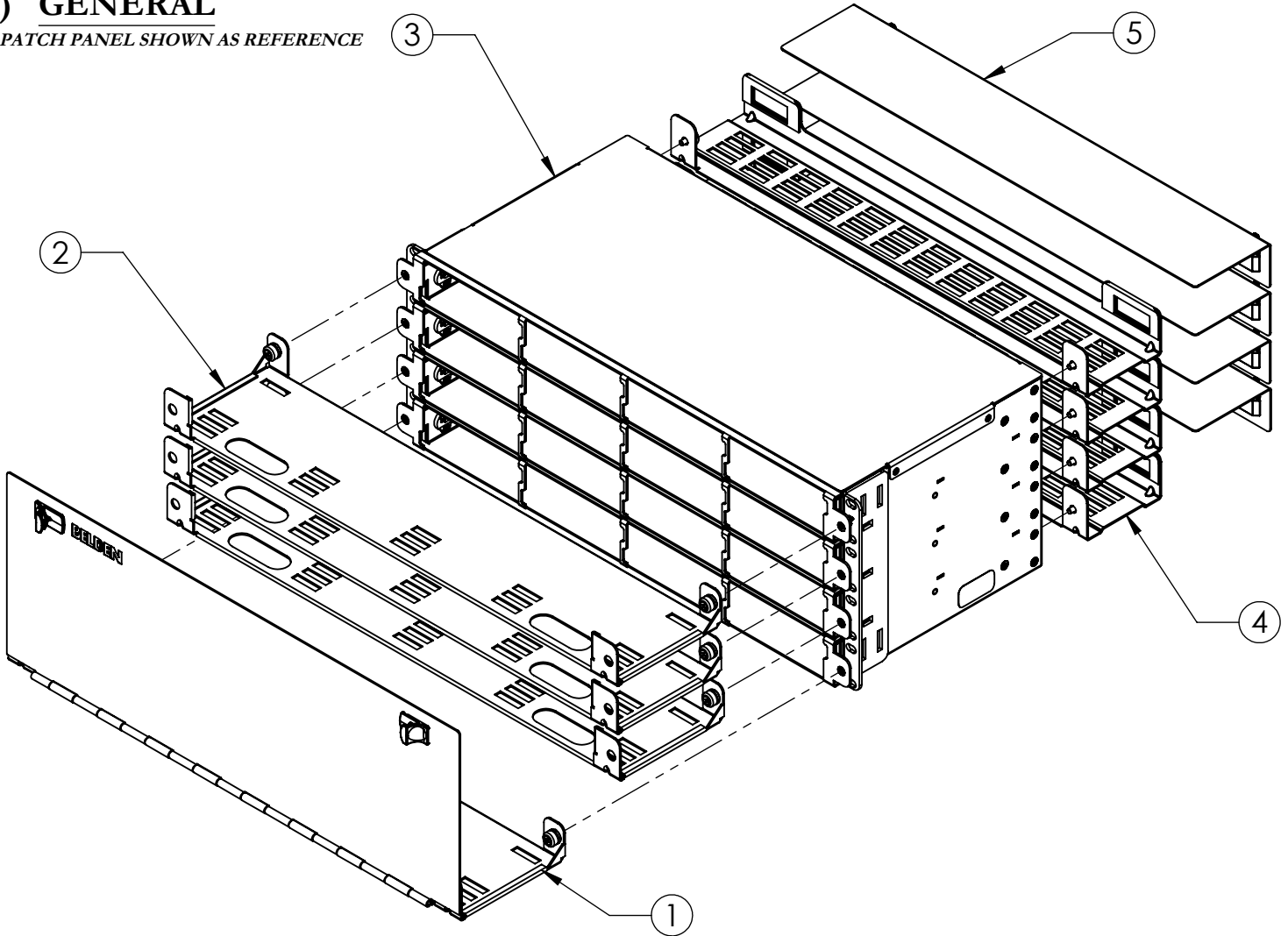
INSTALLATION GUIDE

FIBER EXPRESS ULTRA HD
PATCH PANEL HOUSING - 4U/4U-23"/2U



A) GENERAL

4U PATCH PANEL SHOWN AS REFERENCE

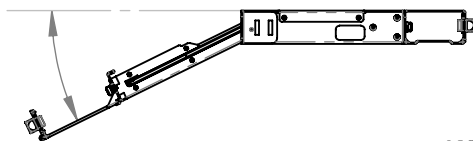


BILL OF MATERIAL				
ITEM NO.	DESCRIPTION	2U QTY.	4U QTY.	4U-23" QTY.
1	PATCH CORD TRAY ASSY.	1	1	1
2	UPPER PATCH CORD TRAY ASSY.	1	3	3
3	HOUSING	1	1	1
4	CABLE TRAY ASSY.	2	4	4
5	CABLE TRAY COVER	2	4	4
6	HARDWARE KIT (see contents)	1	1	1

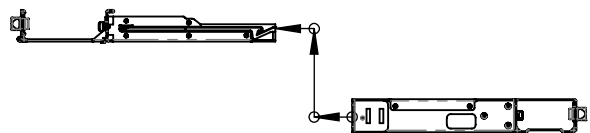
HARDWARE KIT CONTENTS			
DESCRIPTION	2U QTY.	4U QTY.	4U-23" QTY.
MX100116 SCREW (10-32)	4	4	4
MX100051 SCREW (12-24)	4	4	4
KURLY LOCK	8	16	16
WIRE MARKER (Blue)	2	4	5
NYLON CABLE TIE	12	24	24
VELCRO STRAP	4	8	10
IDENTIFICATION LABEL	2	2	2

B) PATCH PANEL FEATURES

TILTING DRAWER



REMOVABLE DRAWER



NOTE: Install and manage from top to bottom.



Laser Radiation

Optical fibers transmit laser radiation of sufficient magnitude to cause injury to personnel and caution must be exercised to avoid exposure. This caution applies to any point in the system where the laser signal can be "accessed" (for example, at the bare fiber ends).

INSTALLATION GUIDE

FIBER EXPRESS ULTRA HD
 PATCH PANEL HOUSING - 4U/4U-23"/2U



C) CABLE PREPARATION

1. For correct fiber cable preparation, refer de figure 1 and figure 2.
2. Mark outer armor (jacket) at distance "A" from end of the cable (if there is no outer armor (jacket), go to step 4) for distribution cable.
3. Remove the outer cable armor (jacket) up to mark and, if necessary, clean surface.
4. Distribution cable:
 1. Mark outer armor of distribution cable at distance "B".
 2. Remove the outer cable armor (jacket) up to mark and, if necessary, clean surface

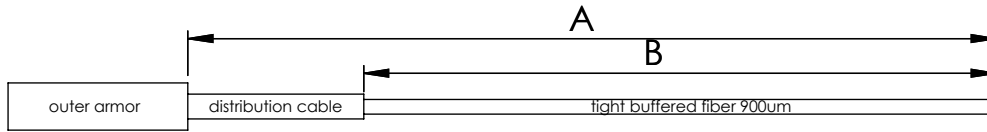


Figure 1: Cable length for Distribution cable

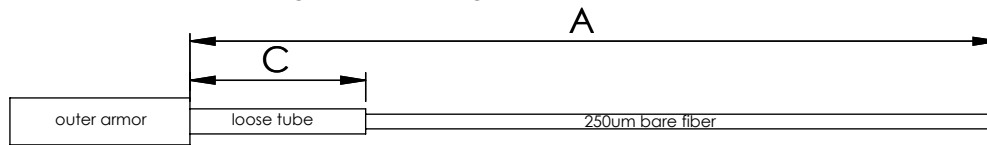
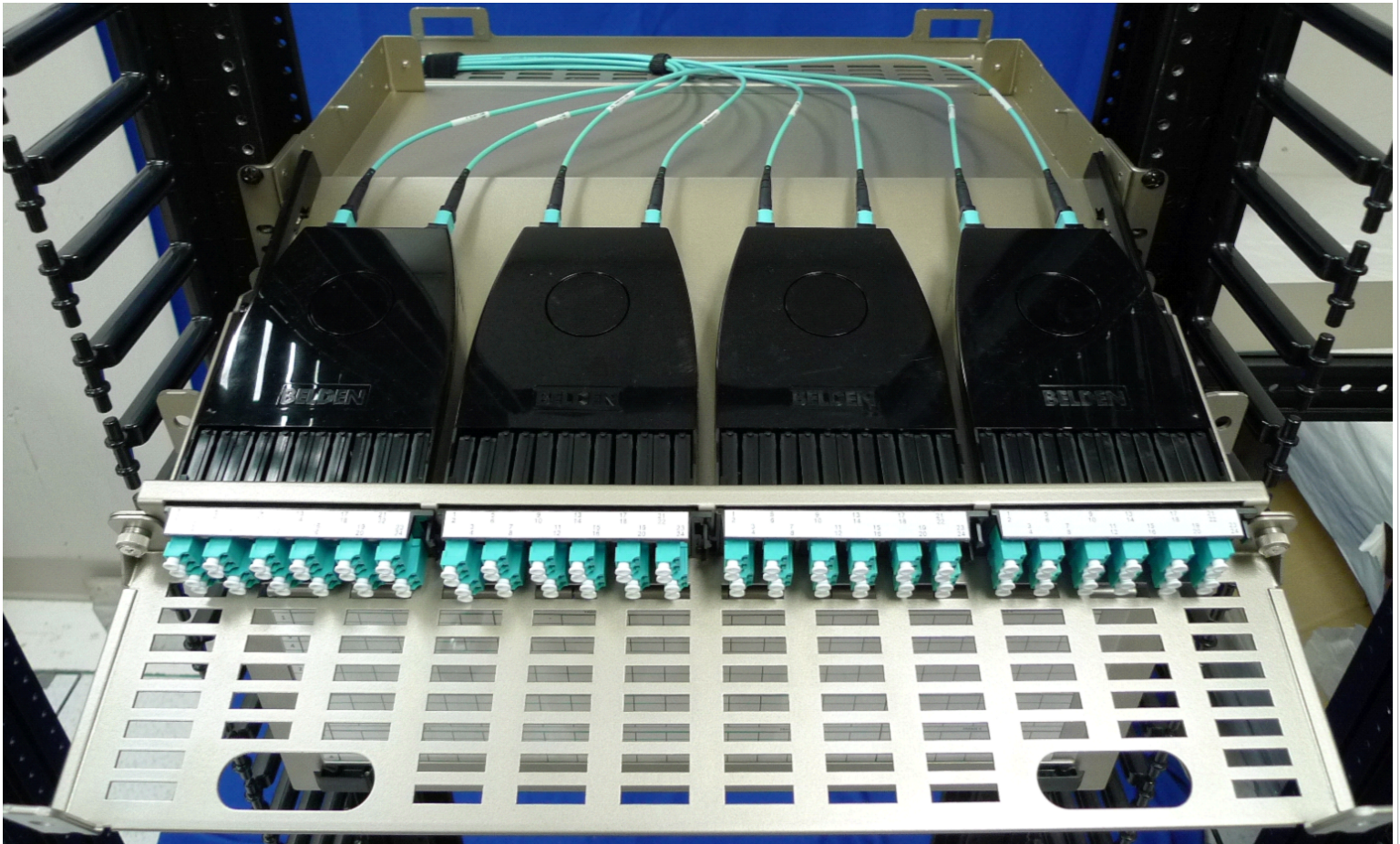


Figure 2: Cable length for Loose Tube cable

TYPE OF CABLE	A	B	C
DISTRIBUTION CABLE	1.40m (55in)	1.22m (48in)	-
LOOSE TUBE	1.27m (50in)	-	0.37m (14.5in)
TRUNK CABLE (MPO)	0.61m (24in)		

D) USING PRE-TERMINATED CASSETTES: MPO TRUNK CABLES



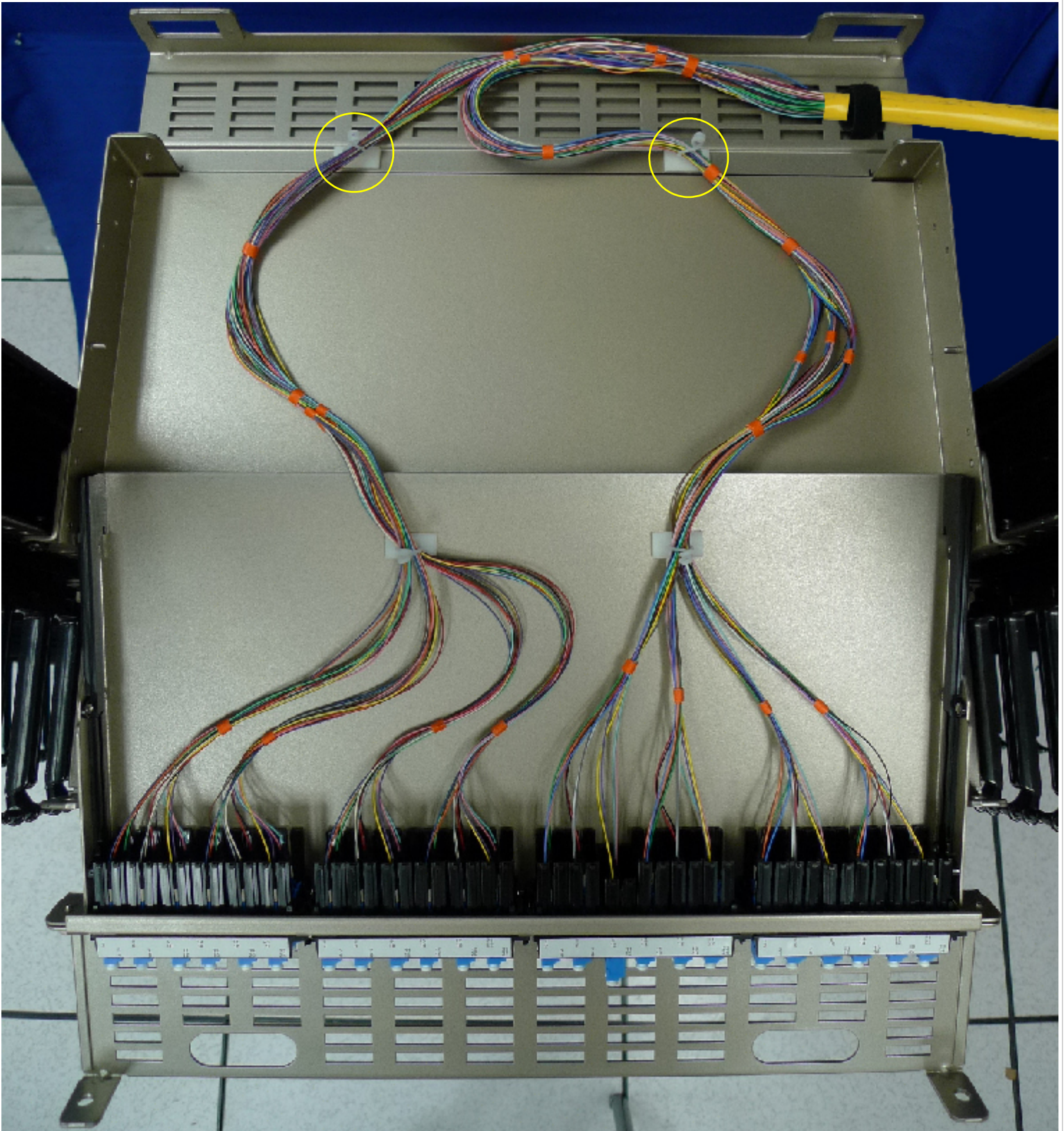
4U PATCH PANEL SHOWN AS REFERENCE

INSTALLATION GUIDE

FIBER *EXPRESS* ULTRA HD
PATCH PANEL HOUSING - 4U/4U-23"/2U

BELDEN
SENDING ALL THE RIGHT SIGNALS

E) USING TIGHT BUFFER : 900um TERMINATIONS



4U PATCH PANEL SHOWN AS REFERENCE

NOTE: Suggested management.

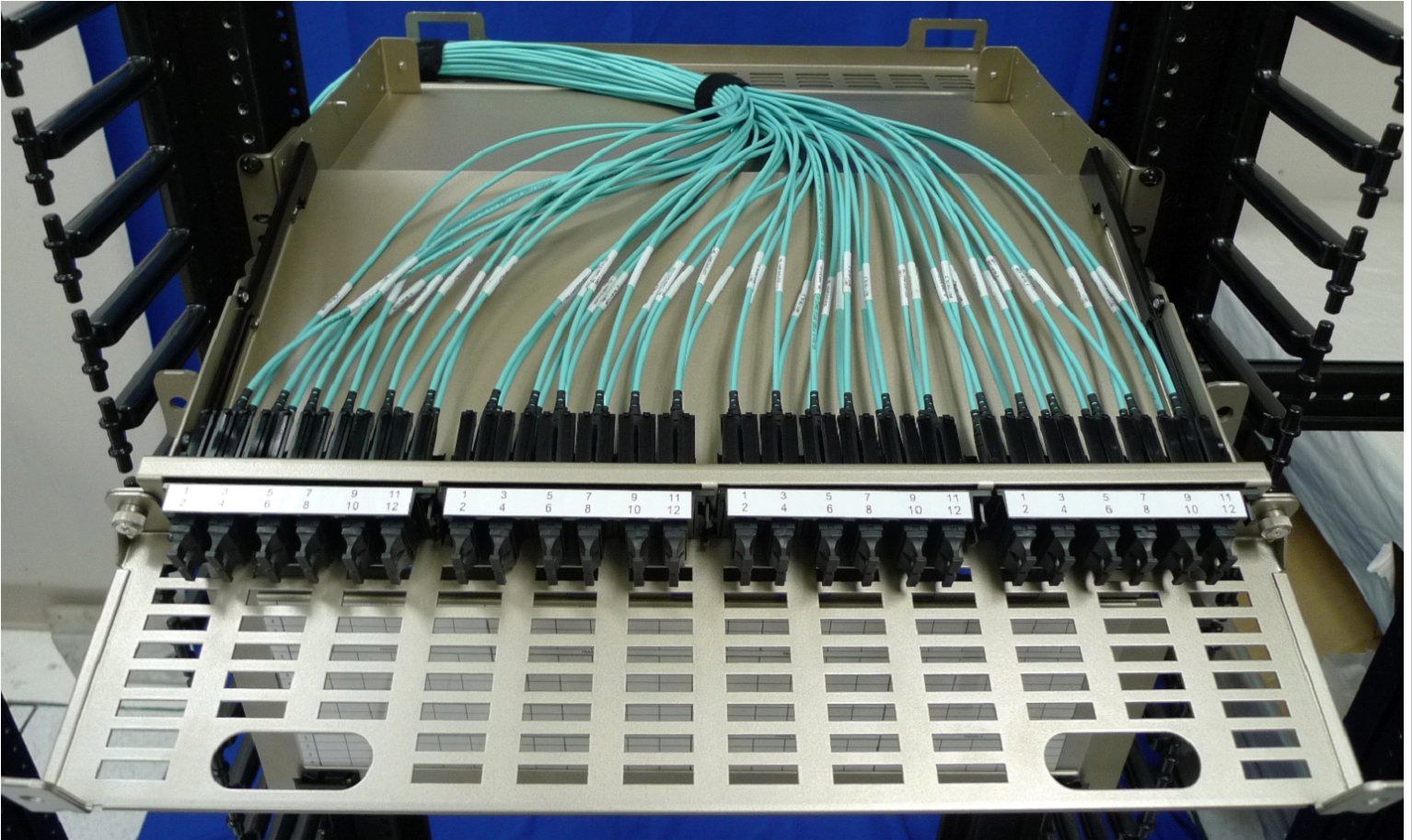
INSTALLATION GUIDE

FIBER EXPRESS ULTRA HD
PATCH PANEL HOUSING - 4U/4U-23"/2U

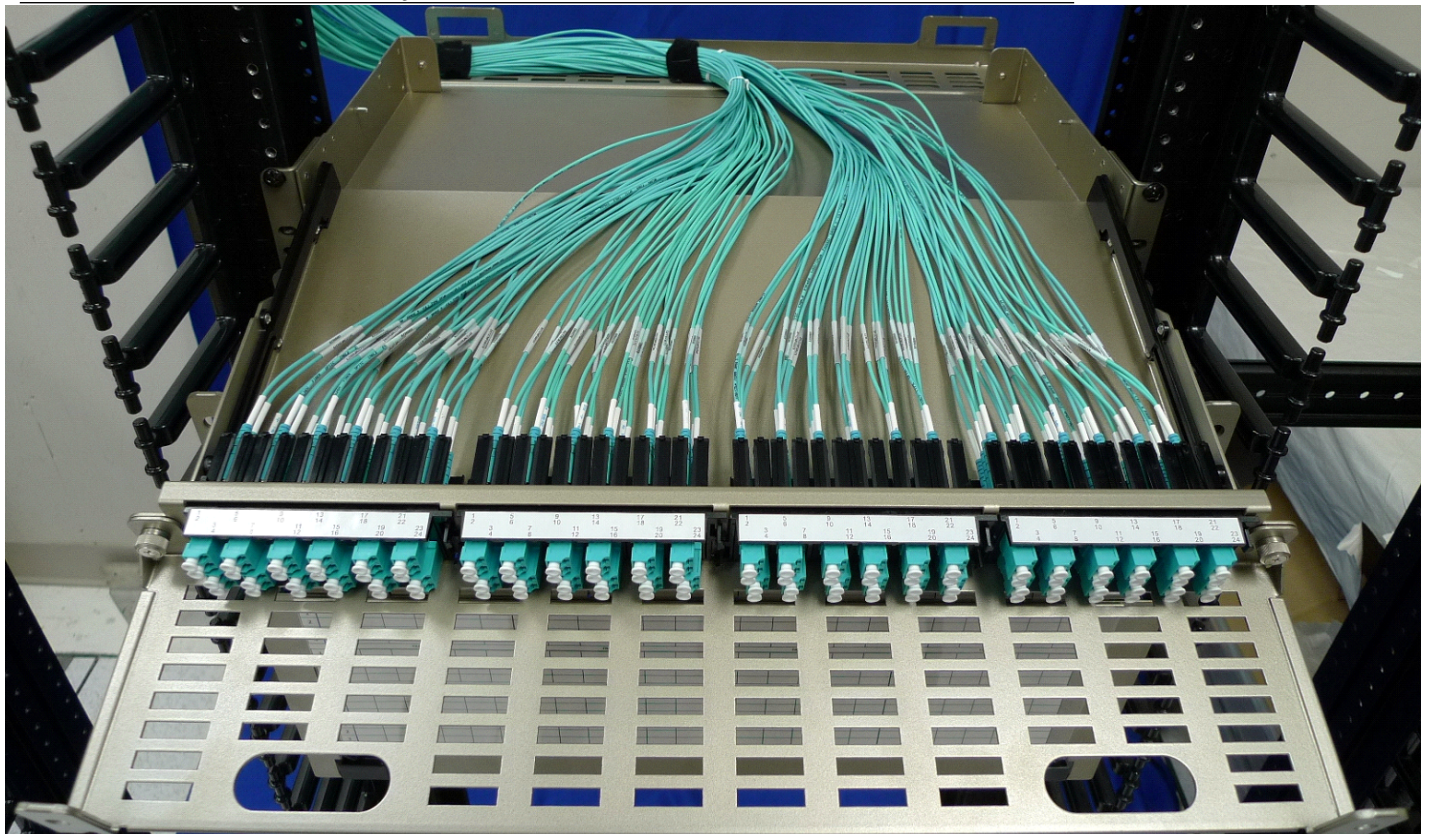
BELDEN
SENDING ALL THE RIGHT SIGNALS

F) USING MPO TRUNK CABLES

4U PATCH PANEL SHOWN AS REFERENCE



G) USING LC DUPLEX JACKETED TERMINATIONS: 2mm



4U PATCH PANEL SHOWN AS REFERENCE

PAGE 4 OF 4