

**DCXS Series Standard Configuration Options**

**SERIES/FRAME STYLE** - DCXS (84h x 36w x 15d) SEISMIC

**CBL FLOW** -      DIRECTION

- 1 - LEFT TO RIGHT
- 2 - RIGHT TO LEFT

**COLOR\*** -

- 1 - CENTRAL OFFICE WHITE
- 2 - BLACK

**TOP PANEL** -

- 0 - NONE (ALL KNOCKOUTS REMOVED)
- 1 - BLANK (ALL KNOCKOUTS IN PLACE)
- 2 - BRUSH + (4) TOP CABLE BRACKETS
- 3 - BRUSH + (8) TOP CABLE BRACKETS

**BOTTOM PANEL** -

- 0 - NONE (ALL KNOCKOUTS REMOVED)
- 1 - BLANK (ALL KNOCKOUTS IN PLACE)
- 2 - BRUSH + (4) BOT CABLE BRACKETS
- 3 - BRUSH + (8) BOT CABLE BRACKETS

**DOORS\*\*** -

- 0 - NONE
- 1 - BI-FOLD PLEXIGLASS
- 2 - BI-FOLD PERFORATED
- 3 - BI-FOLD SOLID

**SIDE PANEL** -

- 0 - NONE
- 1 - PLEXIGLASS
- 2 - SOLID

**REAR PANEL** -

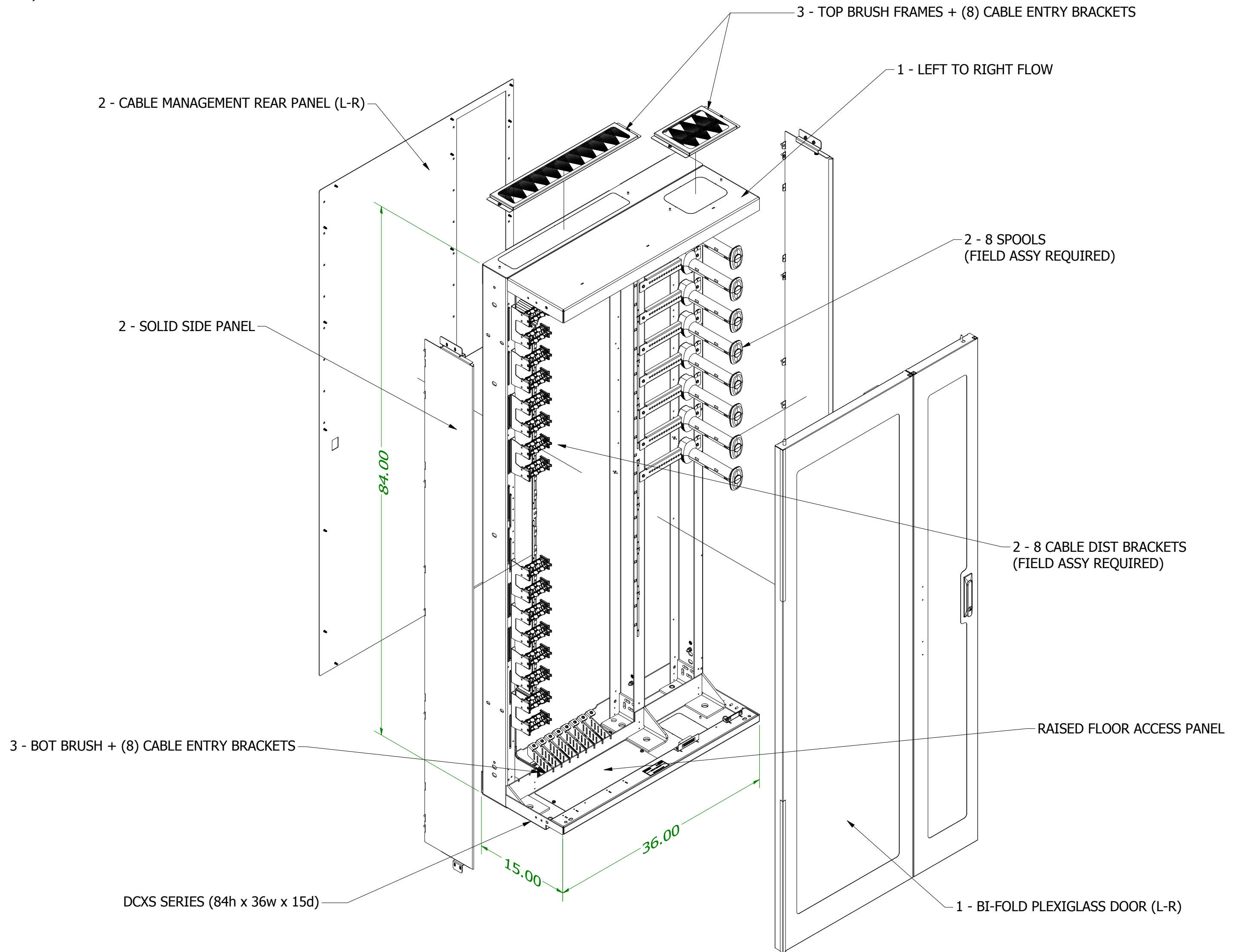
- 0 - NONE
- 1 - SOLID
- 2 - CABLE MANAGEMENT

**HOUSING CABLE ATTACHMENT** -

- 0 - NONE
- 1 - 4 CABLE DIST BRACKETS
- 2 - 8 CABLE DIST BRACKETS

**SPOOLS** -

- 0 - NONE
- 1 - 4 SPOOLS
- 2 - 8 SPOOLS



\*BY DEFAULT TOP, BOTTOM, SIDE, REAR PANELS AND CABLE MANAGEMENT ACCESSORIES ARE POWDER COATED TO MATCH FRAME COLOR

\*\*BY DEFAULT DOORS ARE POWDER COATED BLACK MEDIUM TEXTURE

STANDARD WHITE ENCLOSURES WILL HAVE BLACK DOORS / STANDARD BLACK ENCLOSURES WILL HAVE BLACK DOORS

CONSULT FACTORY FOR SPECIAL COLOR OPTIONS AND/OR ENCLOSURE CONFIGURATIONS

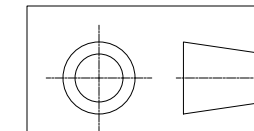
**MATRIX ENCLOSURE ORDER EXAMPLE:**

DCXS	1	1	3	3	1	2	2	2	2
SERIES	CBL FLOW	COLOR	TOP PANEL	BOTTOM PANEL	DOORS	SIDE PANEL	REAR PANEL	HSG CBL ATTACHMENT	SPOOLS

**MATRIX DESCRIPTION**

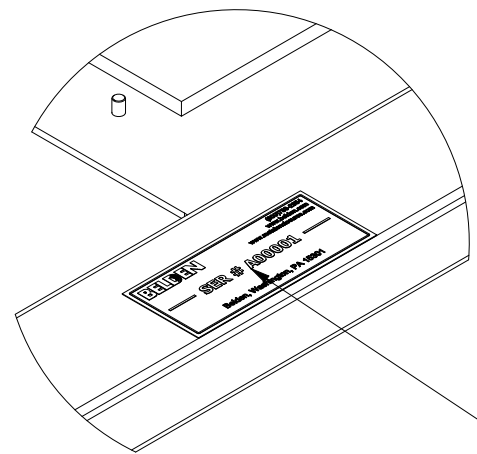
84.00h x 36w x 15d DCXS SERIES ENCLOSURE  
 LEFT TO RIGHT FLOW  
 CENTRAL OFFICE WHITE w/  
 TOP BRUSH + (8) CABLE BRACKETS,  
 BOT BRUSH + (8) CABLE BRACKETS,  
 BI-FOLD PLEXIGLASS DOOR,  
 SOLID SIDE PANEL  
 CABLE MANAGEMENT REAR PANEL  
 8 BRACKET (96 CABLE) / 16 LPM BRACKETS  
 8 SPOOLS

<b>BELDEN</b>			
THIS DRAWING AND ALL INFORMATION CONTAINED HEREIN IS THE PROPERTY OF BELDEN. ANY USE, COPY OR REPRODUCTION OF THIS MATERIAL WITHOUT WRITTEN PERMISSION OF BELDEN IS PROHIBITED.			
<b>DCXS SERIES MASTER</b>			
<b>DCXS SERIES - MATRIX ORDERING</b>			
APPROVED BY: RCG			
APPROVAL DATE: 9/13/19			
UNITS: INCH	SH 1 of 4	C	<b>SUBMITTAL</b>
SCALE: 3:32	DATE: 9/13/2019		



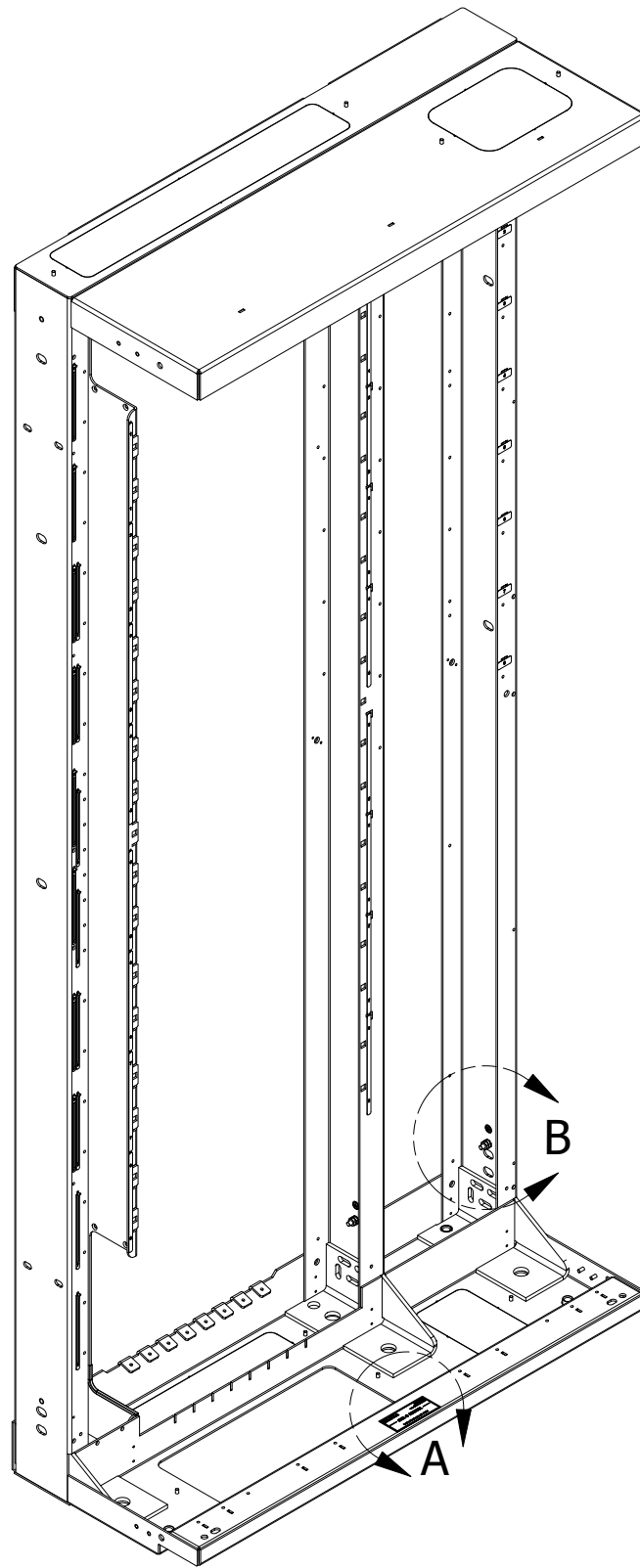
**DCX FRAME DETAILS**

- WELDED 14GA FORMED STEEL CONSTRUCTION
- ALL FRAMES SEISMICALLY RATED TO AC156 AND GR63 (CERTIFICATIONS AVAILABLE UPON REQUEST)
- RIGHT-TO-LEFT OR LEFT-TO-RIGHT CABLE FLOW DIRECTIONS
- ROOM FOR (8) 4U HOUSINGS
- EACH ENCLOSURE IS IDENTIFIED/TRACKED BY A UNIQUE SERIAL NUMBER
- ALL REMOVABLE DOORS ARE GROUNDED TO FRAME BY USE OF BONDING STRAPS AND/OR BONDING HARDWARE
- ALL ENCLOSURES INCLUDE LEVERS  
LEVERS MUST BE REMOVED FOR SEISMIC APPLICATIONS

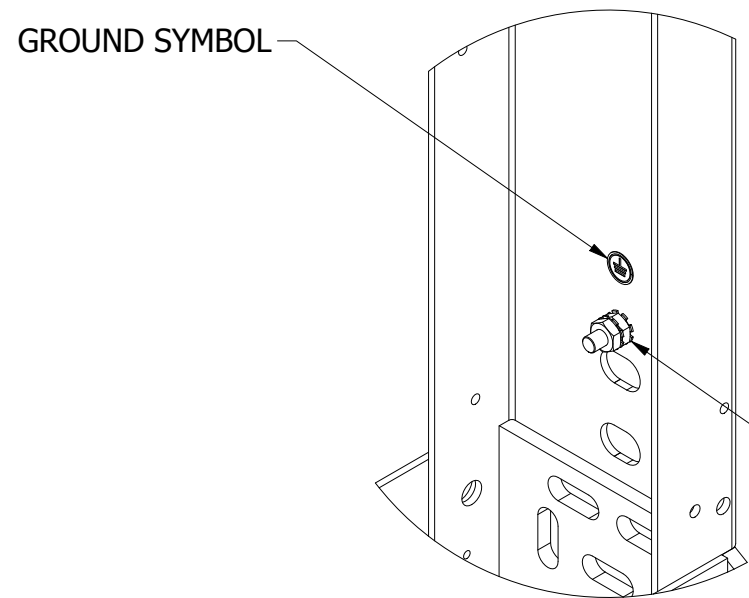
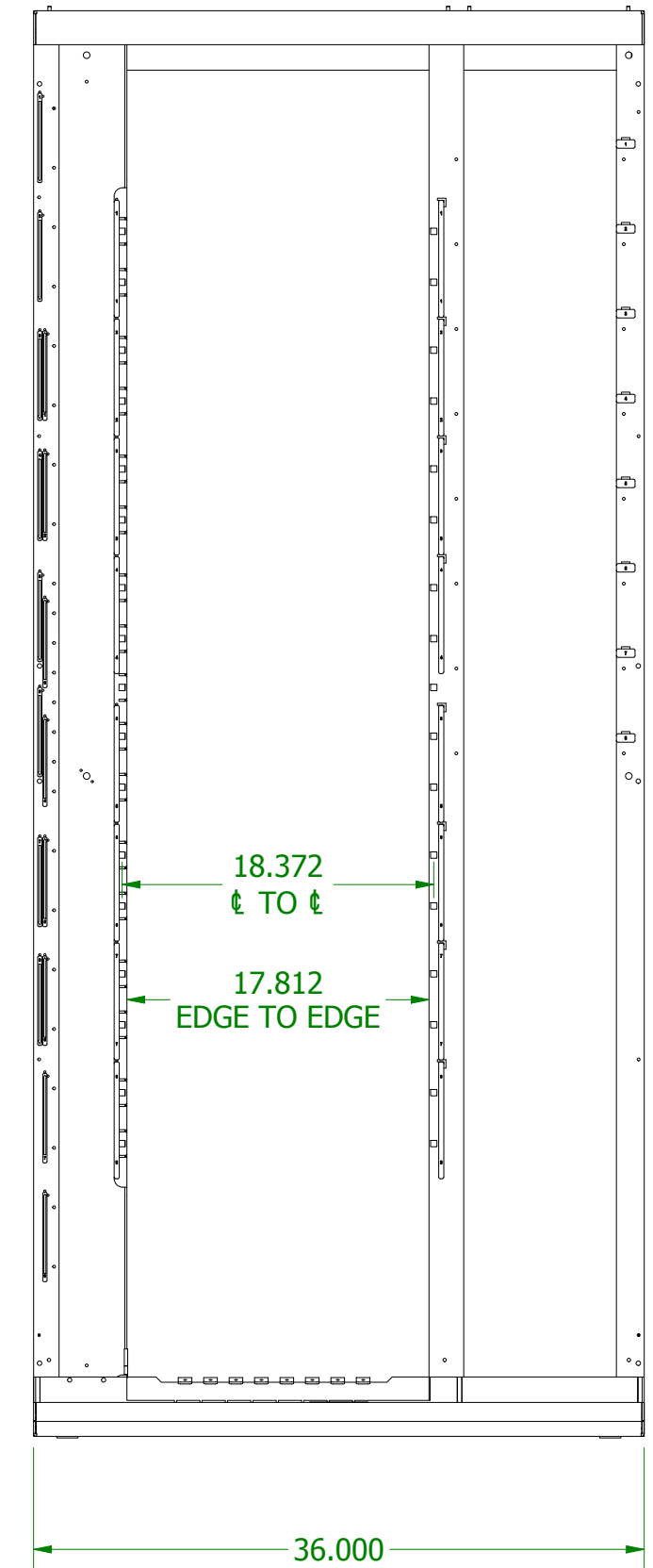
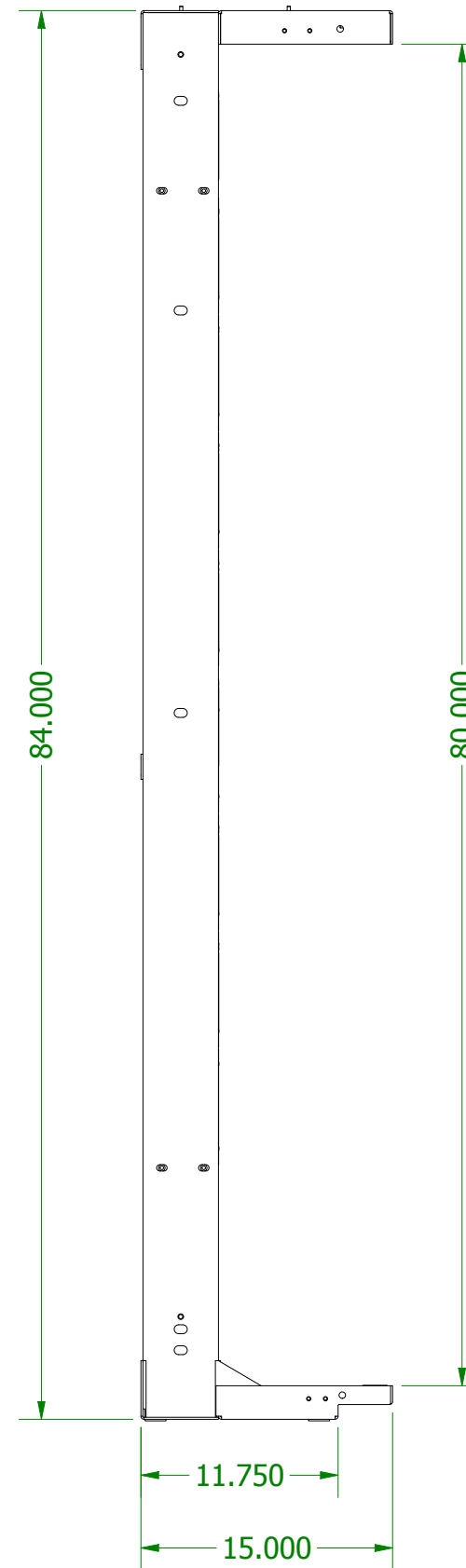


UNIQUE SERIAL NUMBER LOCATED ON BOTTOM FRONT SILL OF EACH ENCLOSURE

DETAIL A  
SCALE 3/8

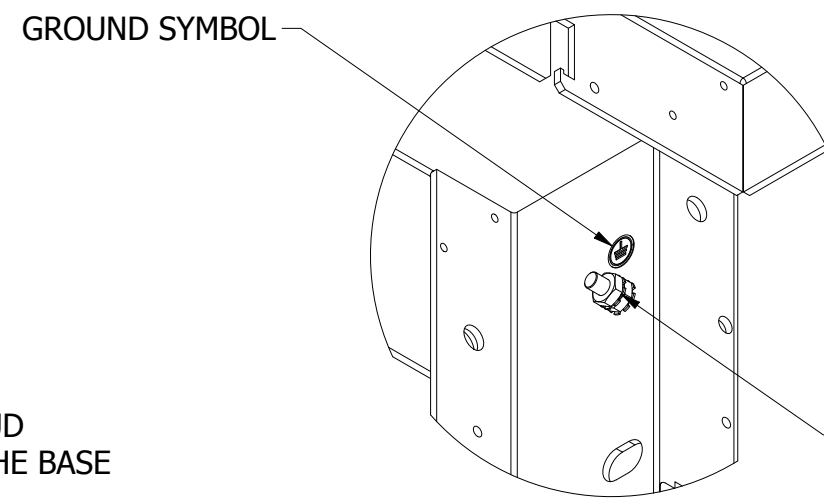


LEFT TO RIGHT  
FEED FRAME SHOWN



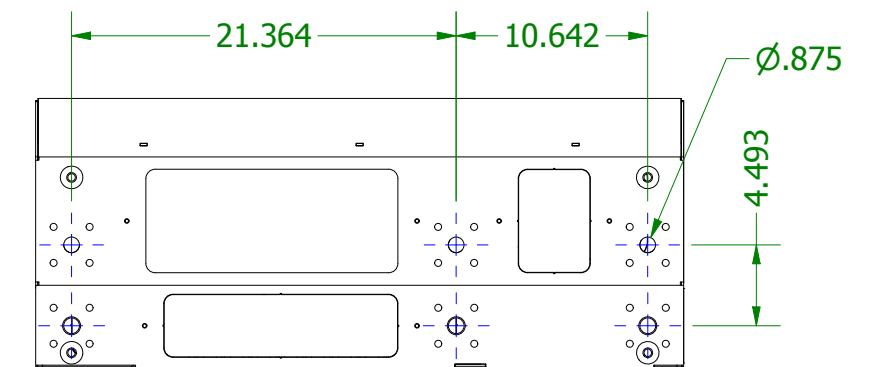
1/4-20 x 3/4  
GROUNDING STUD  
(3) PLACES AT THE BASE  
OF EACH POST

DETAIL B  
SCALE 3/8

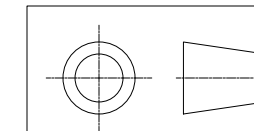


1/4-20 x 3/4  
GROUNDING STUD  
(2) PLACES AT THE TOP  
OF OUTER BASE POST

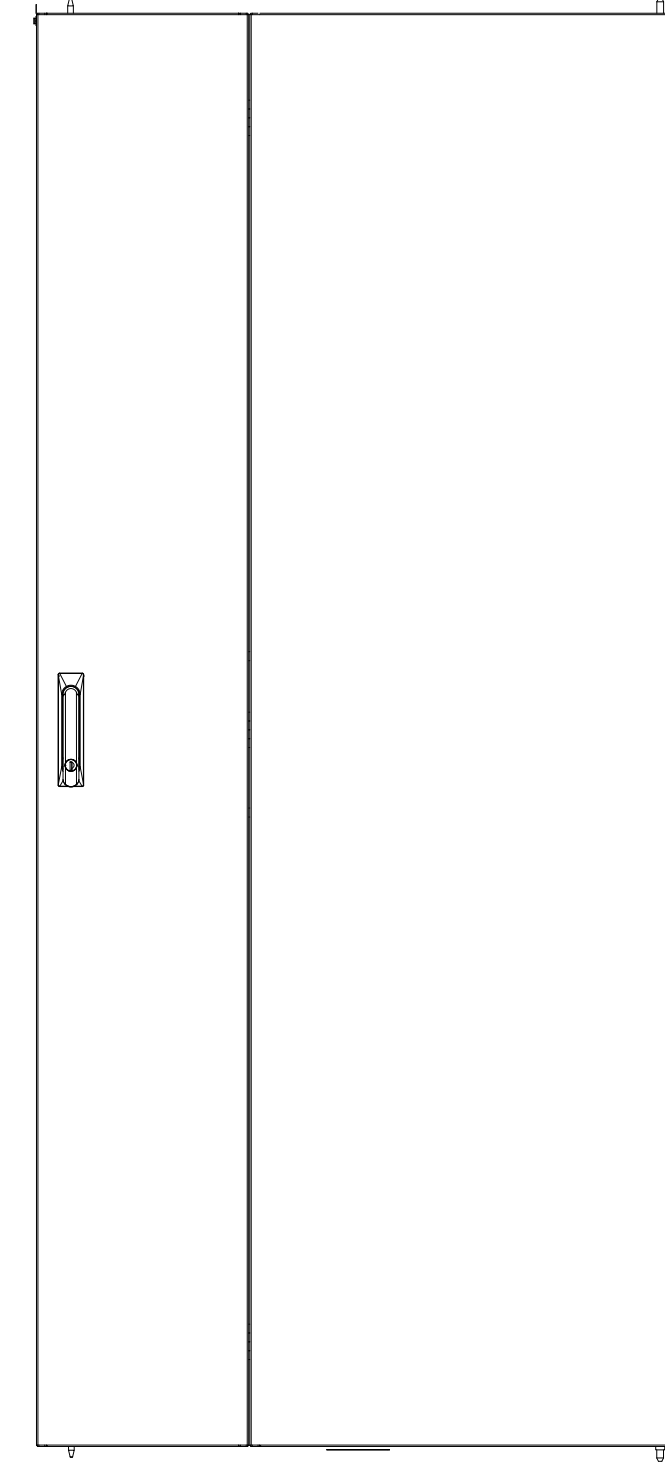
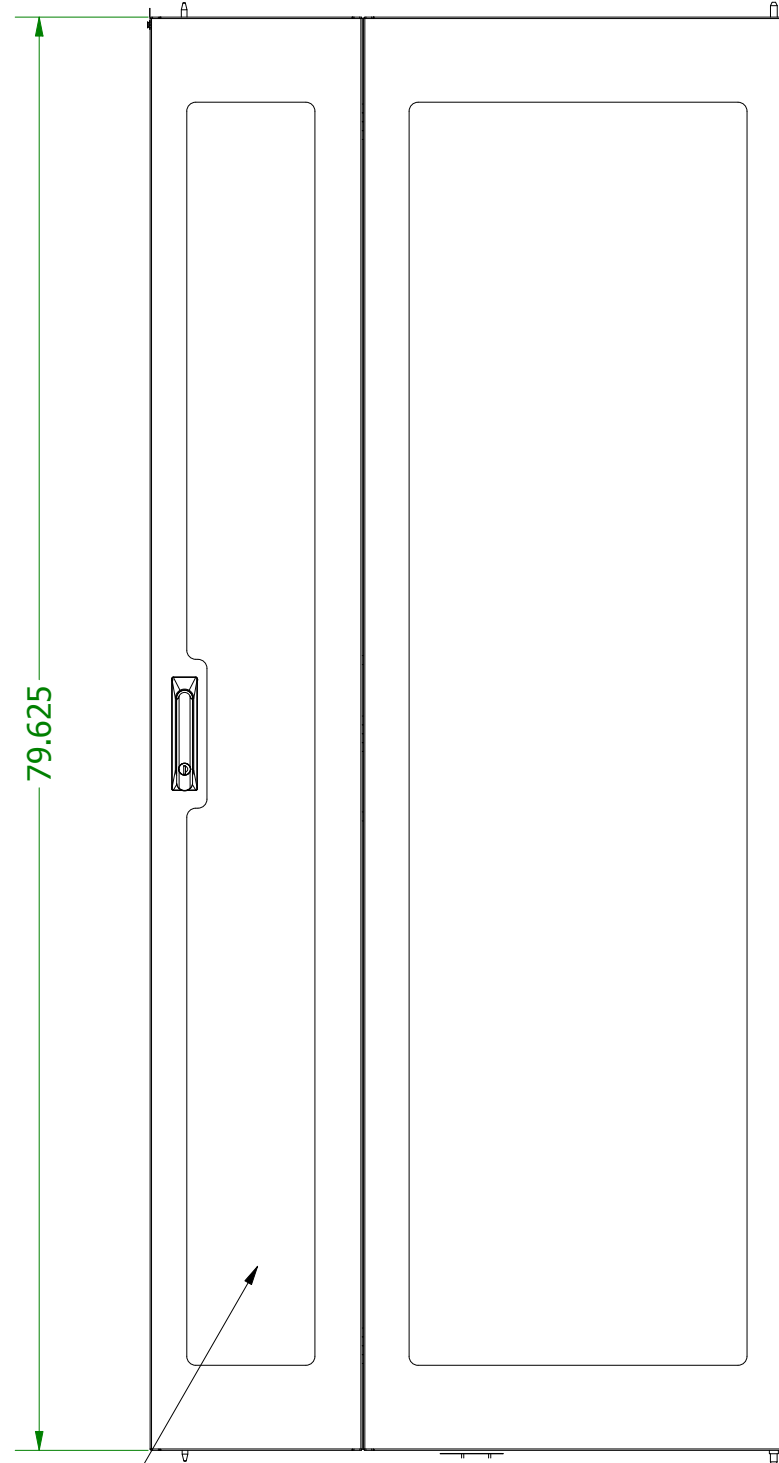
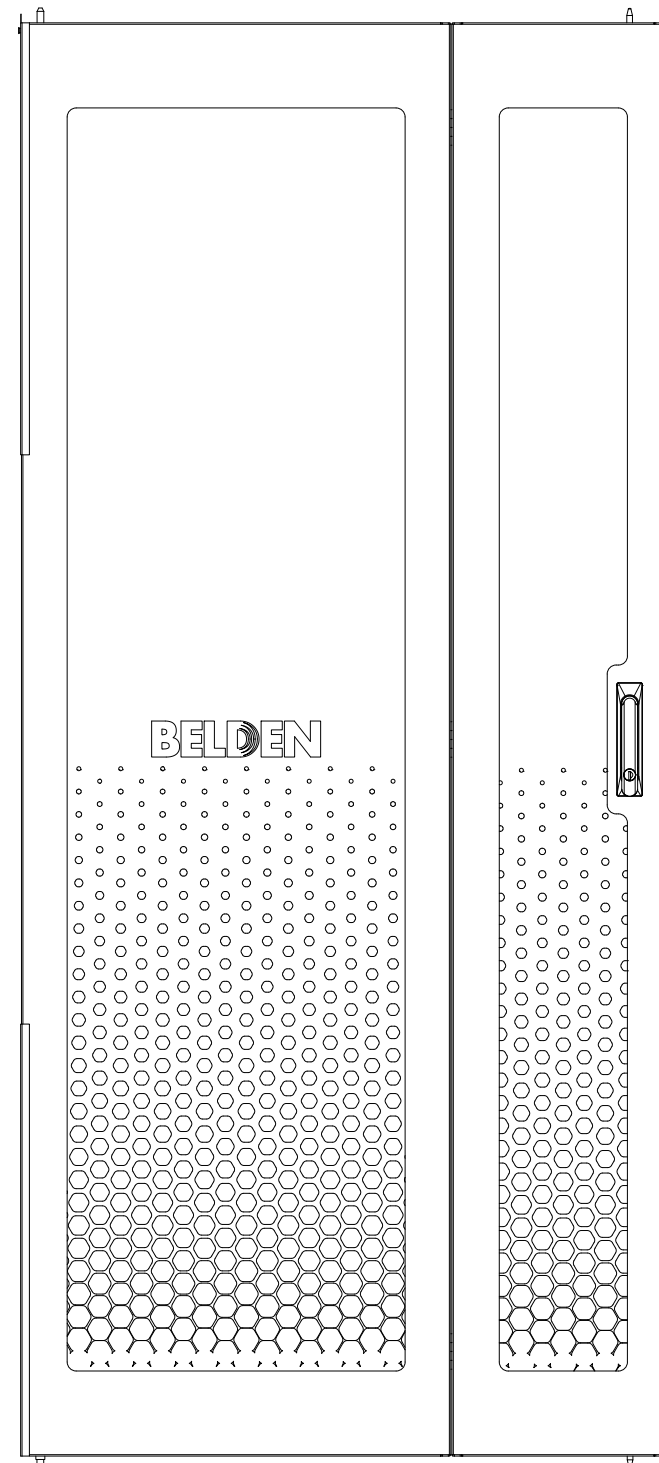
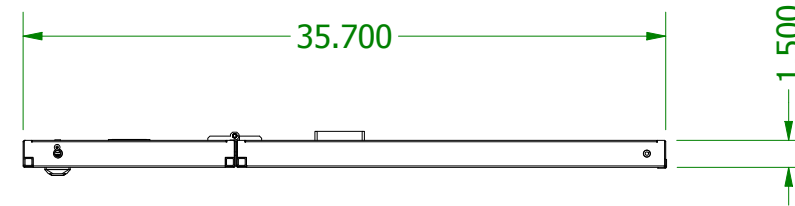
DETAIL C  
SCALE 3:8



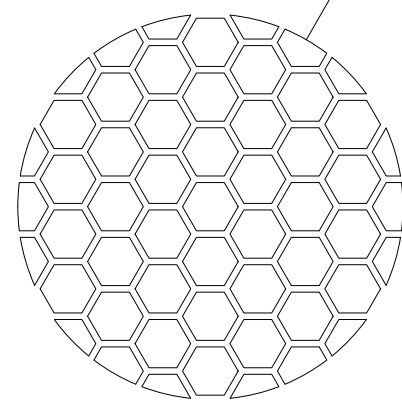
<b>BELDEN</b>			
<small>THIS DRAWING AND ALL INFORMATION CONTAINED HEREIN IS THE PROPERTY OF BELDEN. ANY USE, COPY OR REPRODUCTION OF THIS MATERIAL WITHOUT WRITTEN PERMISSION OF BELDEN IS PROHIBITED.</small>			
<b>DCXS SERIES MASTER</b>			
<b>DCXS SERIES - FRAME DETAILS</b>			
APPROVED BY: RCG			
APPROVAL DATE: 9/13/19			
UNITS: INCH	SH 2 of 4	C	<b>SUBMITTAL</b>
SCALE: 3:32	DATE: 9/13/2019		



**STANDARD DOORS**  
ALL DOORS BLACK BY DEFAULT



**DCX-DOOR-KITxyyy**  
BIFOLD PLEXIGLASS DOOR  
xx - 01 LEFT-RIGHT  
xx - 02 RIGHT-LEFT  
yy - B - BLACK  
yy - W - CENTRAL OFFICE WHITE



78% PERF PATTERN  
SCALE 1:1

**DCX-DOOR-KITxyyy**  
BIFOLD 78% PERF DOOR  
xx - 03 LEFT-RIGHT  
xx - 04 RIGHT-LEFT  
yy - B - BLACK  
yy - W - CENTRAL OFFICE WHITE

**DCX-DOOR-KITxyyy**  
BIFOLD SOLID DOOR  
xx - 05 LEFT-RIGHT  
xx - 06 RIGHT-LEFT  
yy - B - BLACK  
yy - W - CENTRAL OFFICE WHITE

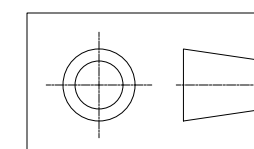


THIS DRAWING AND ALL INFORMATION CONTAINED HEREIN IS THE PROPERTY OF BELDEN. ANY USE, COPY OR REPRODUCTION OF THIS MATERIAL WITHOUT WRITTEN PERMISSION OF BELDEN IS PROHIBITED

DCXS SERIES MASTER

DCXS SERIES - DOOR DETAILS

DRAWN BY: RCG			
DRAWN DATE: 9/13/19			
UNITS: INCH	SH 3 of 4	C	<b>SUBMITTAL</b>
SCALE: 3:32	DATE: 9/13/2019		



4

3

2

1

### STANDARD REAR PANELS

D

D

C

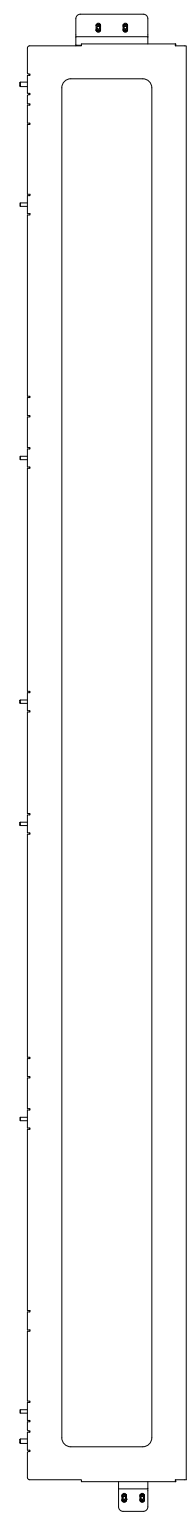
C

B

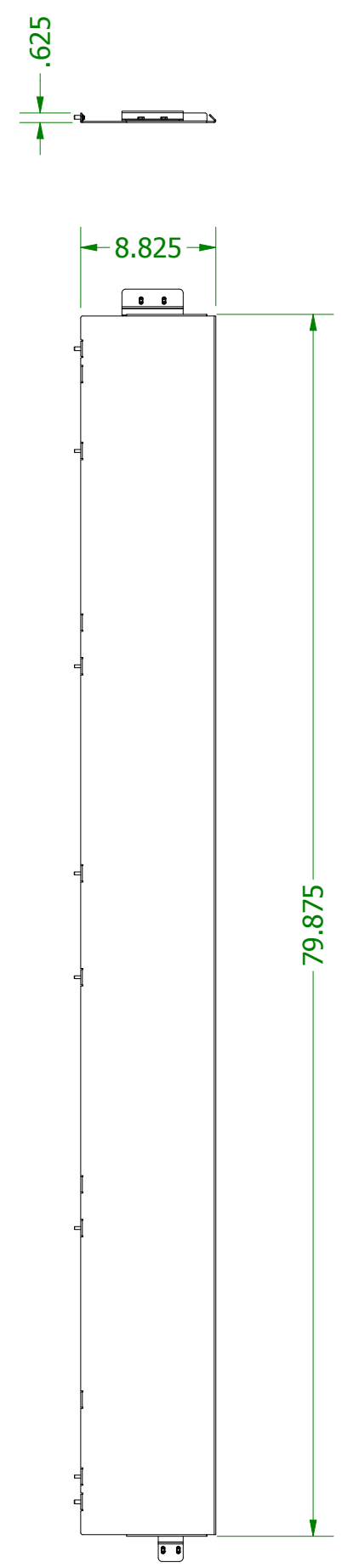
B

A

A

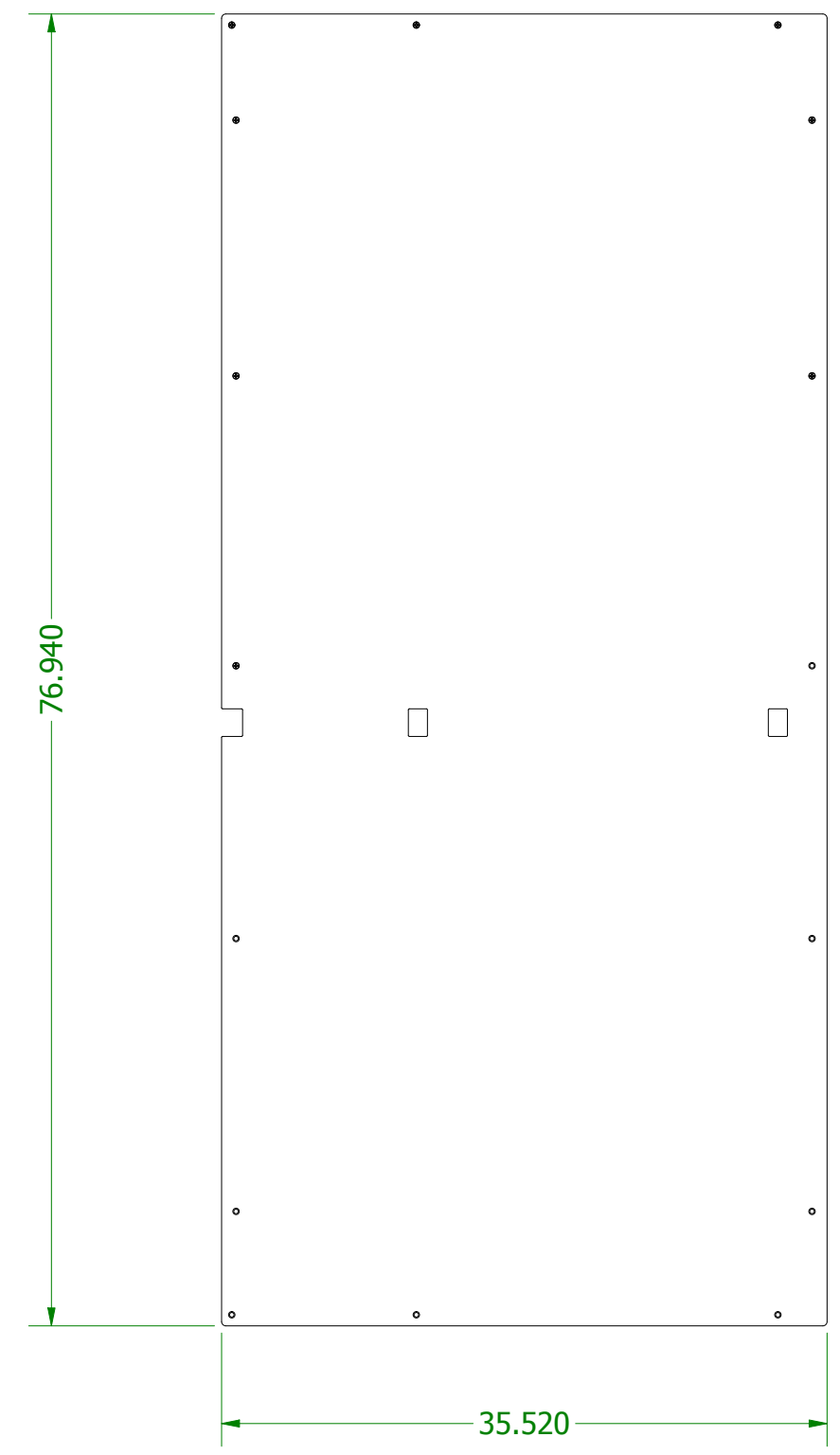
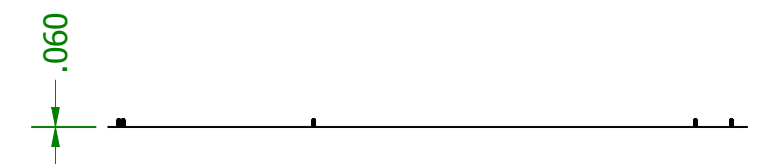


**DCX-SIDE-PNL01-yy**  
 PLEXIGLASS  
 yy - B - BLACK  
 yy - W - CENTRAL OFFICE WHITE

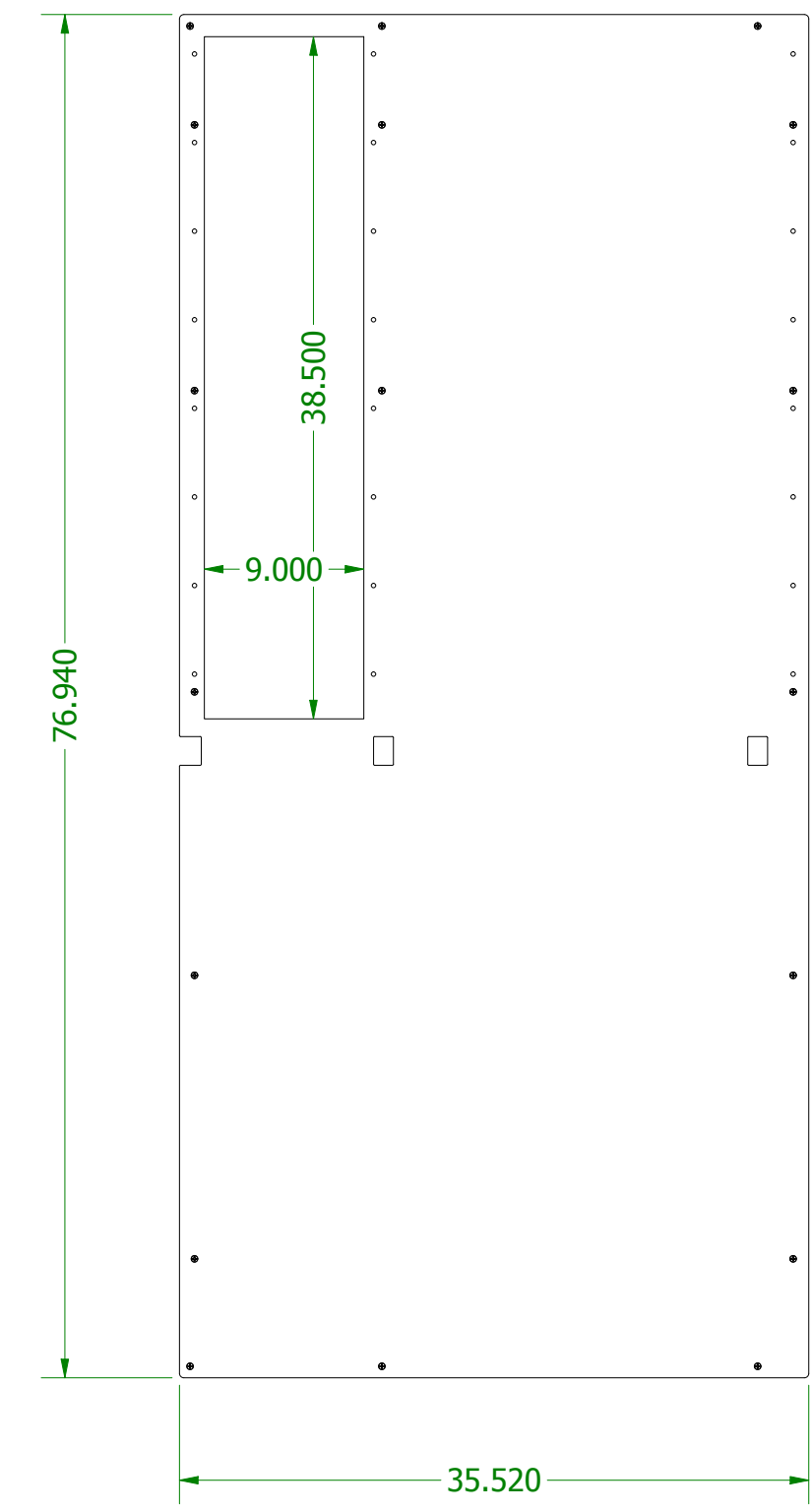


**DCX-SIDE-PNL02-yy**  
 SOLID  
 yy - B - BLACK  
 yy - W - CENTRAL OFFICE WHITE

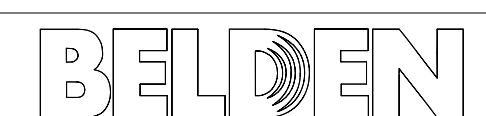
### STANDARD SIDE PANELS



**DCX-REAR-PNLxx-yy**  
 SOLID  
 xx - 01 - LEFT-RIGHT  
 xx - 02 - RIGHT-LEFT  
 yy - B - BLACK  
 yy - W - CENTRAL OFFICE WHITE



**DCX-REAR-PNL-xx-yy**  
 CABLE MANAGEMENT  
 xx - 03 - LEFT-RIGHT  
 xx - 04 - RIGHT-LEFT  
 yy - B - BLACK  
 yy - W - CENTRAL OFFICE WHITE



THIS DRAWING AND ALL INFORMATION CONTAINED HEREIN IS THE PROPERTY OF BELDEN. ANY USE, COPY OR REPRODUCTION OF THIS MATERIAL WITHOUT WRITTEN PERMISSION OF BELDEN IS PROHIBITED

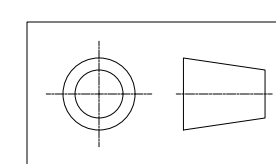
DCXS SERIES MASTER

DCXS SERIES - REAR & SIDE PANEL DETAILS

DRAWN BY: RCG  
 DRAWN DATE: 9/13/19

UNITS: INCH SH 4 of 4 C  
 SCALE: 3:32 DATE: 9/13/2019

**SUBMITTAL**



4

3

2

1