

Manual

CC-Link IE Field Basic

LioN-X IO-Link Master Multiprotocol:

- 0980 XSL 3912-121-007D-00F (8 × IO-Link Class A)
- 0980 XSL 3912-121-007D-01F (8 × IO-Link Class A)
- 0980 XSL 3912-121-027D-01F (8 × IO-Link Class A)
- 0980 XSL 3913-121-007D-01F (8 × IO-Link Class A/B Mixmodule)
- 0980 XSL 3913-121-027D-01F (8 × IO-Link Class A/B Mixmodule)

LioN-Xlight IO-Link Master CC-Link IE Field Basic:

- 0980 LSL 3411-121-0006-010 (8 × IO-Link Class A)
- 0980 LSL 3410-121-0006-010 (4 × IO-Link Class A + 8 × DI)



Contents

1 About this manual	8
1.1 General information	8
1.2 Explanation of symbols	9
1.2.1 Use of danger information	9
1.2.2 Use of general information	9
1.3 Version information	10
2 Safety instructions	12
2.1 Intended use	12
2.2 Qualified personnel	13
3 Designations and synonyms	14
4 System description	18
4.1 About LioN-X	18
4.2 Device variants	19
4.3 I/O port overview	21
5 Overview of product features	24
5.1 CC-Link IE Field Basic product features	24
5.2 I/O port features	25
5.3 Integrated Web server	26
5.4 Security features	27
5.5 Other features	28

6 Assembly and wiring	29
6.1 General information	29
6.2 Outer dimensions	30
6.2.1 LioN-X multiprotocol variants with CC-Link IE Field Basic	30
6.2.2 LioN-Xlight variants with CC-Link IE Field Basic	34
6.2.3 Notifications	36
6.3 Port assignments	37
6.3.1 Ethernet ports, M12 socket, 4-pin, D-coded	37
6.3.2 Power supply with M12 power L-coded	38
6.3.2.1 IO-Link Master with Class A ports	39
6.3.2.2 IO-Link Master with Class A/B ports	40
6.3.3 I/O ports as M12 sockets	40
6.3.3.1 IO-Link ports (Class A and Class B)	41
7 Starting operation	43
7.1 CSP+ file	43
7.2 MAC addresses	43
7.3 State on delivery	44
7.4 Setting the rotary encoding switches	45
7.4.1 CC-Link IE Field Basic	48
7.4.2 Factory reset	48
7.5 Setting network parameters	49
8 Configuration CC-Link IE Field Basic	50
8.1 General settings	51
8.1.1 Force mode lock	52
8.1.2 Web interface lock	52
8.1.3 Report U_L/U_{AUX} supply voltage fault	52
8.1.4 Report actuator fault without U_L/U_{AUX} voltage	52
8.1.5 Report U_S voltage fault	52

8.1.6 External configuration lock	52
8.2 Port configuration X1 .. X8	53
8.2.1 Port Mode	57
8.2.2 Validation and Backup	57
8.2.3 IQ Mode	61
8.2.4 Cycle Time	61
8.2.5 Vendor ID	62
8.2.6 Device ID	62
8.2.7 IOL Failsafe	62
8.2.8 IOL Failsafe values	63
8.2.9 Swapping Length	63
8.2.10 Swapping Offset	64
8.2.11 Swapping Count	64
8.2.12 Sensor Supply Disabled	64
8.2.13 Suppress all Diagnosis	64
8.2.14 DO Surveillance Timeout	64
8.2.15 DO Failsafe	64
8.2.16 DO Restart Mode	65
8.2.17 DI Logic	65
8.2.18 DI Filter	66
8.2.19 Error LED Disable	66
8.2.20 Level LED Disable	66
8.2.21 Use Push Pull	66
8.2.22 Current Limit	66
8.2.23 DI Latch	67
8.2.24 DI Extension	68

9 Process data assignment

9.1 Consuming data (output)	71
9.2 Producing data (input)	72

10 Diagnostics processing

73

10.1 Error of the system/sensor power supply	73
10.2 Error of the auxiliary/actuator power supply	74
10.3 Overload/short circuit of the digital outputs	74
10.4 Overload/short circuit of the actuator power supply P24	76
10.5 Overload/short-circuit of the I/O port sensor supply outputs	77

11 Configuration and operation with GxWorks3® 78

11.1 Integration of a CSP+ file	78
11.2 Network parameters	79
11.3 Parameter processing	81

12 IIoT functionality 84

12.1 MQTT	85
12.1.1 MQTT configuration	85
12.1.2 MQTT topics	88
12.1.2.1 Base topic	88
12.1.2.2 Publish topic	91
12.1.2.3 Command topic (MQTT Subscribe)	96
12.1.3 MQTT configuration - Quick start guide	100
12.1.3.1 MQTT configuration via JSON	100
12.2 OPC UA	102
12.2.1 OPC UA configuration	103
12.2.2 OPC UA address space	105
12.2.3 OPC UA configuration - Quick start guide	106
12.2.3.1 OPC UA configuration via JSON	106
12.3 REST API	108
12.3.1 Standard device information	110
12.3.2 Structure	111
12.3.3 Configuration and forcing	117
12.3.4 Reading and writing ISDU parameters	120
12.3.4.1 Reading ISDU	120

12.3.4.2 Writing ISDU	122
12.3.5 Upload and process an IODD file	124
12.3.6 Example: Reading ISDU	128
12.3.7 Example: Writing ISDU	128
12.4 CoAP server	129
12.4.1 CoAP configuration	129
12.4.2 REST API access via CoAP	130
12.4.3 CoAP configuration - Quick start guide	133
12.4.3.1 CoAP configuration via JSON	133
12.5 Syslog	135
12.5.1 Syslog configuration	135
12.5.2 Syslog configuration - Quick start guide	138
12.5.2.1 Syslog configuration via JSON	138
12.6 Network Time Protocol (NTP)	140
12.6.1 NTP configuration	140
12.6.2 NTP configuration - Quick start guide	142
12.6.2.1 NTP configuration via JSON	142

13 The integrated Web server 144

13.1 LioN-X 0980 XSL... variants	145
13.1.1 The Status page	145
13.1.2 The Ports page	146
13.1.2.1 IODD upload	146
13.1.3 The System page	148
13.1.3.1 License	149
13.1.3.2 Config upload/download	149
13.1.3.3 IODD	152
13.1.3.4 Restart device	153
13.1.3.5 Reset configuration to factory defaults	153
13.1.3.6 Firmware update	153
13.1.3.7 System diagnosis	154
13.1.3.8 HTTPS	155
13.1.3.9 HTTPS certificate manager	155
13.1.4 The User page	155

13.1.5 Certificate creation – example	156
13.2 LioN-Xlight 0980 LSL... variants	159
13.2.1 The System page	159

14 IODD **161**

14.1 IO-Link Device parameters and ISDU requests	161
14.2 Web GUI functionality	162
14.2.1 Port Details page	162
14.2.2 Parameters page	164
14.2.3 IODD Management page	165

15 Technical data **166**

15.1 General	167
15.2 CC-Link IE Field Basic protocol	168
15.3 Power supply of the module electronics/sensors	169
15.4 Power supply of the actuators	170
15.4.1 IO-Link Class A devices (U_L)	170
15.4.2 IO-Link Class A/B devices (U_{AUX})	170
15.5 I/O ports Channel A (Pin 4)	171
15.5.1 Configured as digital input, Ch. A (Pin 4)	171
15.5.2 Configured as digital output, Ch. A (Pin 4)	172
15.5.3 Configured as IO-Link port in COM mode, Ch. A	173
15.6 I/O ports Channel B (Pin 2)	174
15.6.1 Configured as a digital input, Ch. B (Pin 2)	174
15.6.2 Configured as a digital output, Ch. B (Pin 2)	175
15.7 LEDs	178
15.8 Data transfer times	181

16 Accessories **183**

1 About this manual

1.1 General information

Read the assembly and operating instructions on the following pages carefully before starting up the modules. Keep this information where it is accessible to all users.

The texts, figures, diagrams, and examples used in this document are exclusively used to explain how to operate and apply the modules.

Please contact us if you have any detailed questions on installing and starting up the devices.

Belden Deutschland GmbH
Lumberg Automation™
Im Gewerbepark 2
D-58579 Schalksmühle
Germany

<https://lumberg-automation-support.belden.com>

<https://belden.com>

<https://catalog.belden.com>

Belden Deutschland GmbH – Lumberg Automation™ – reserves the right to make technical changes or changes to this document at any time without notice.

1.2 Explanation of symbols

1.2.1 Use of danger information

Danger information is denoted as follows:



Danger: Means that death, serious physical injury or substantial damage to property will occur if the required safety measures are not taken.



Warning: Means that death, serious physical injury or substantial damage to property can occur if the required safety measures are not taken.



Caution: Means that minor physical injury or damage to property can occur if the required safety measures are not taken.

1.2.2 Use of general information

General information is denoted as follows:



Attention: Contains important information on the product, on how to manage the product, or on the respective section of the documentation to which your special attention is being drawn.

1.3 Version information

Index	Created	Changes
1.0	03/2022	
1.1	06/2022	Temporarily excluded device variant information for 0980 XSL 3913-121-007D-01F (shipping in 2023)
1.2	10/2022	Device variant information for 0980 XSL 3913-121-007D-01F included. Ch. 7.4: LED description
1.3	12/2022	Ch. 8.1 ("External configuration lock")
1.4	07/2023	Warning in ch. Setting the rotary encoding switches on page 45
1.5	10/2023	Added new feature HTTPS (several chapters updated). New device variants: 0980 XSL 3912-121-027D-01F 0980 XSL 3913-121-027D-01F

Index	Created	Changes
2.0	08/2024	<p>Ch. 8.2: new config info for "DI Latch" and "DI Extension"</p> <p>Chs. 9.1/9.2: new "Attention" info</p> <p>Ch. 11.2: new screenshot (in 5.)</p> <p>Ch. 12: new "Attention" info</p> <p>Ch. 12.1: new "Attention" info</p> <p>Ch. 12.2: new "Attention" info</p> <p>Ch. 12.3.3: new lines in "Port mode object"</p> <p>Ch. 13.1.2: new screenshot</p> <p>Ch. 13.1.3: new screenshot, new features (see subordinated chapters)</p> <p>New chapters:</p> <p>DI Latch on page 67</p> <p>DI Extension on page 68</p> <p>Upload and process an IODD file on page 124</p> <p>IODD upload on page 146</p>

Table 1: Overview of manual revisions

2 Safety instructions

2.1 Intended use

The products described in this manual are decentralized IO-Link Masters on an Industrial Ethernet Network.

We adhere to all safety standards when developing, producing, testing, and documenting our products. When you adhere to the handling specifications and safety instructions described for the configuration, assembly, and correct operation, there should not normally be any risks for people or equipment.

The modules fulfill the requirements of the EMC guidelines (2014/30/EU) and the low voltage guideline (2014/35/EU).

The IO-Link Masters are designed to be used in the industrial sector. The industrial environment is distinguished by the fact that the consumer is not connected directly to the public low voltage network. Additional measures are required for use in residential areas or in business and commercial sectors.



Attention: This equipment may cause radio interference in residential areas. In this case the operator may be requested to carry out appropriate measures.

The proper and safe operation of this product depends on proper transportation, storage, assembly, and installation, and careful operation.

A completely assembled device housing is required for the proper operation of the IO-Link Masters. Only connect devices that fulfill the requirements of EN 61558-2-4 and EN 61558-2-6 to the IO-Link Masters.

During the configuration, installation, start-up, maintenance, and testing of the devices, adhere to the safety and accident-prevention guidelines for the specific application.

Only install cables and accessories that fulfill the requirements and regulations for safety, electromagnetic compatibility, and, where applicable, telecommunication end devices, as well as the specification information. Information on which cables and accessories are permitted for the installation

can be obtained from Belden Deutschland GmbH – Lumberg Automation™ or is contained in this manual.

2.2 Qualified personnel

The configuration, installation, start-up, maintenance, and testing of the devices may only be performed by a qualified electrician who is familiar with the safety standards of the automation technology.

The personnel requirements are based on the requirement profiles described by ZVEI, VDMA, or equivalent organizations.

Only electricians who are familiar with the content of all provided device documentation are authorized to install and maintain the devices described. These are persons who

- ▶ based on their technical training, knowledge, and experience, and their knowledge of the pertinent standards, can evaluate the work to be carried out and identify any potential risks or
- ▶ based on working for several years in a related sector, have the same level of knowledge as they would have from the relevant technical training.

Only Belden Deutschland GmbH – Lumberg Automation™ – is permitted to make changes to the hardware or software of the products that go beyond the scope of this manual.



Warning: Making unqualified changes to the hardware or software, or non-adherence to the warning information contained in this document, can result in serious personal injury or damage to equipment.



Attention: Belden Deutschland GmbH accepts no liability for any damage caused by unqualified personnel or improper use. This automatically voids the warranty.

3 Designations and synonyms

AOI	Add-On Instruction
API	Application Programming Interface
BF	Bus Fault LED
Big Endian	Data format with High-B on first place (PROFINET and IO-Link)
BUI	Back-Up Inconsistency (EIP diagnostics)
CC	CC-Link IE Field
C/Q	I/O port pin 4 mode, IO-Link communication/switching signal
Ch. A	Channel A (Pin 4) of I/O port
Ch. B	Channel B (Pin 2) of I/O port
CIP	Common Industrial Protocol (media independent protocol)
CIP Safety™	Common Industrial Protocol for Safety applications, CIP Safety™ is a registered trademark of ODVA
Class A	IO-Link port specification (Class A)
Class B	IO-Link port specification (Class B)
CoAP	Constrained Application Protocol
CSP+	Control & Communication System Profile Plus
DAT	Device Acknowledgement Time
DCP	Discovery and Configuration Protocol
DevCom	Device Communicating (EIP diagnostics)
DevErr	Device Error (EIP diagnostics)
DI	Digital Input
DIA	Diagnostic LED
DO	Digital Output
DIO	Digital Input/Output
DTO	Device Temperature Overrun (EIP diagnostics)
DTU	Device Temperature Underrun (EIP diagnostics)
DUT	Device under test

3 Designations and synonyms

EIP	EtherNet/IP™ is a registered trademark of ODVA
ERP	Enterprise Resource Planning system
ETH	ETHERNET
FE	Functional Earth
FME	Force Mode Enabled (EIP diagnostics)
FS	Functional Safety
FSU	Fast Start-Up
GSDML	General Station Description Markup Language
High-B	High-Byte
HTTPS	Hyper Text Transfer Protocol Secure
ICE	IO-Link port COM Error (EIP diagnostics)
ICT	Invalid Cycle Time (EIP diagnostics)
IDE	IO-Link port Device Error (EIP diagnostics)
IDN	IO-Link port Device Notification (EIP diagnostics)
IDW	IO-Link port Device Warning (EIP diagnostics)
IIoT	Industrial Internet of Things
ILE	Input process data Length Error (EIP diagnostics)
IME	Internal Module Error (EIP diagnostics)
I/O	Input / Output
I/O port	X1 .. X8
I/O port pin 2	Channel B of I/O ports
I/O port pin 4 (C/Q)	Channel A of I/O ports
IODD	I/O Device Description
IOL or IO-L	IO-Link
I/Q	I/O port pin 2 mode, Digital Input/switching signal
ISDU	Indexed Service Data Unit
IVE	IO-Link port Validation Error (EIP diagnostics)
I&M	Identification & Maintenance
JSON	JavaScript Object Notation (platform independent data format)
L+	I/O port pin 1, sensor power supply

LioN-X 60	LioN-X variants with a width of 60mm
Little Endian	Data format with Low-B on first place (Ethernet/IP)
LLDP	Link Layer Discovery Protocol
Low-B	Low-Byte
LSB	Least Significant Bit
LVA	Low Voltage Actuator Supply (EIP diagnostics)
LVS	Low Voltage System/Sensor Supply (EIP diagnostics)
MIB	Management Information Base
MP	Multiprotocol: PROFINET + EtherNet/IP + EtherCAT® + Modbus TCP (+ CC-Link IE Field Basic)
MQTT	Message Queuing Telemetry Transport (open networking protocol)
MSB	Most Significant Bit
M12	Metric thread according to DIN 13-1 with 12 mm diameter
NTP	Network Time Protocol
OFDT	One Fault Delay Time
OLE	Output process data Length Error (EIP diagnostics)
OPC UA	Open Platform Communications Unified Architecture (platform independent, service-oriented architecture)
PFH	Probability of dangerous Failure per Hour [h ⁻¹]
PD	Process Data
PDCT	Port and Device Configuration Tool
PLC	Programmable Logic Controller
PN	PROFINET
PWR	Power
Qualifier	Validity on a process value. Valid = "1"
REST	REpresentational State Transfer
RFC	Request for Comments
RPI	Requested Packet Interval
RWr	Word data input as seen from the master station (CC-Link)
RWw	Word data output as seen from the master station (CC-Link)
RX	Bit data input as seen from the master station (CC-Link)

3 Designations and synonyms

RY	Bit data output as seen from the master station (CC-Link)
SCA	Short Circuit Actuator/ U_L/U_{AUX} (EIP diagnostics)
SCS	Short Circuit Sensor (EIP diagnostics)
SFRT	Safety Function Response Time
SIO mode	Standard Input Output mode
SLMP	Seamless Message Protocol
SNMP	Simple Network Management Protocol
SP	Single Protocol (PROFINET, EtherNet/IP, EtherCAT®, Modbus TCP or CC-Link IE Field Basic)
SPE	Startup Parameterization Error (EIP diagnostics)
T-B	Test Channel B
T-A	Test Channel A
U_{AUX}	$U_{Auxiliary}$, supply voltage for the load circuit (Actuator supply on Class B ports of Class A/B IO-Link Master)
UDP	User Datagram Protocol
UDT	User-Defined Data Types
UINT8	Byte in PLC (IB, QB)
UINT16	Unsigned integer with 16 bits or word in PLC (IW, QW)
U_L	U_{Load} , supply voltage for the load circuit (Actuator supply on Class A IO-Link Master)
UL	Underwriters Laboratories Inc. (certification company)
UTC	Coordinated Universal Time (Temps Universel Coordonné)
WCDT	Worst Case Delay Time

Table 2: Designations and synonyms

4 System description

The LioN modules (Lumberg Automation™ Input/Output Network) function as the interface in an industrial Ethernet system: A central controller on the management level is able to communicate with the decentralized sensors and actuators on the field level. The line or ring topologies for which LioN modules can be used ensure not only reliable data communication but also significantly reduce the number of cables required and thus also the costs for installation and maintenance. They additionally enable easy and quick extension.

4.1 About LioN-X

The LioN-X device variants convert standard input, standard output or IO-Link signals from sensors & actuators into an industrial Ethernet protocol (PROFINET, EtherNet/IP, EtherCAT®, Modbus TCP, CC-Link IE Field Basic) and/or into a cloud protocol (REST API, OPC UA, MQTT). For the first time, there is now Syslog on board. The robust 8 port housing design allows the use even in harsh environments where e.g. weld field immunity, high temperature ranges or protection class IP67 & IP69K are needed.

Use all benefits of the Lumberg Automation™ product solution by additionally downloading the configuration tool *LioN-Management Suite* from www.belden.com to enable e.g. a fast and easy parameterization of the connected IO-Link devices via the embedded IODD interpreter.

4.2 Device variants

The following variants are available in the LioN-X and the LioN-Xlight family:

Article number	Product designation	Description	I/O port functionality
935700001	0980 XSL 3912-121-007D-00F	LioN-X M12-60 mm, IO-Link Master Multiprotocol (PN, EIP, EC, MB) Security	8 x IO-Link Class A
935700002	0980 XSL 3912-121-007D-01F	LioN-X M12-60 mm, IO-Link Master Multiprotocol (PN, EIP, EC, MB, CC) Security	8 x IO-Link Class A
935710001	0980 XSL 3912-121-027D-01F	LioN-X M12-60 mm, IO-Link Master Multiprotocol (PN, EIP, EC, MB, CC) Security, HTTPS	8 x IO-Link Class A
935703001	0980 XSL 3913-121-007D-01F	LioN-X M12-60 mm, IO-Link Master Multiprotocol (PN, EIP, EC, MB, CC) Security	8 x IO-Link Class A/B Mixmodule
935711001	0980 XSL 3913-121-027D-01F	LioN-X M12-60 mm, IO-Link Master Multiprotocol (PN, EIP, EC, MB, CC) Security, HTTPS	8 x IO-Link Class A/B Mixmodule
935701001	0980 LSL 3011-121-0006-001	LioN-Xlight M12-60 mm, IO-Link Master PROFINET	8 x IO-Link Class A
935702001	0980 LSL 3010-121-0006-001	LioN-Xlight M12-60 mm, IO-Link Master PROFINET	4 x IO-Link Class A + 8 x DI

Article number	Product designation	Description	I/O port functionality
935701002	0980 LSL 3111-121-0006-002	LioN-Xlight M12-60 mm, IO-Link Master EtherNet/IP	8 x IO-Link Class A
935702002	0980 LSL 3110-121-0006-002	LioN-Xlight M12-60 mm, IO-Link Master EtherNet/IP	4 x IO-Link Class A + 8 x DI
935701003	0980 LSL 3211-121-0006-004	LioN-Xlight M12-60 mm, IO-Link Master EtherCAT®	8 x IO-Link Class A
935702003	0980 LSL 3210-121-0006-004	LioN-Xlight M12-60 mm, IO-Link Master EtherCAT®	4 x IO-Link Class A + 8 x DI
935701004	0980 LSL 3311-121-0006-008	LioN-Xlight M12-60 mm, IO-Link Master Modbus TCP	8 x IO-Link Class A
935702004	0980 LSL 3310-121-0006-008	LioN-Xlight M12-60 mm, IO-Link Master Modbus TCP	4 x IO-Link Class A + 8 x DI
935701005	0980 LSL 3411-121-0006-010	LioN-Xlight M12-60 mm, IO-Link Master CC-Link IE Field Basic	8 x IO-Link Class A
935702005	0980 LSL 3410-121-0006-010	LioN-Xlight M12-60 mm, IO-Link Master CC-Link IE Field Basic	4 x IO-Link Class A + 8 x DI

Table 3: Overview of LioN-X and LioN-Xlight variants

4.3 I/O port overview

The following tables show the main I/O port differences of the LioN-X IO-Link Master family. Pin 4 and Pin 2 of the I/O ports can be configured partly to IO-Link, Digital Input or Digital Output.

LioN-X Class A IO-Link ports

Device variant	Port	Pin 1 U _S	Pin 4 / Ch. A (C/Q)				Pin 2 / Ch. B (I/Q)	
0980 XSL 3x12...	Info:	—	Class A	Type 1	Supply by U _S ¹⁾	Supply by U _L ²⁾	Type 1	Supply by U _L ²⁾
	X8:	Out (4 A)	IOL	DI	DO (0.5 A)	DO (2 A)	DI	DO (2 A)
	X7:	Out (4 A)	IOL	DI	DO (0.5 A)	DO (2 A)	DI	DO (2 A)
	X6:	Out (4 A)	IOL	DI	DO (0.5 A)	DO (2 A)	DI	DO (2 A)
	X5:	Out (4 A)	IOL	DI	DO (0.5 A)	DO (2 A)	DI	DO (2 A)
	X4:	Out (4 A)	IOL	DI	DO (0.5 A)	DO (2 A)	DI	DO (2 A)
	X3:	Out (4 A)	IOL	DI	DO (0.5 A)	DO (2 A)	DI	DO (2 A)
	X2:	Out (4 A)	IOL	DI	DO (0.5 A)	DO (2 A)	DI	DO (2 A)
	X1:	Out (4 A)	IOL	DI	DO (0.5 A)	DO (2 A)	DI	DO (2 A)

Table 4: Port configuration of 0980 XSL 3x12... variants

1) DO switch mode configured as "Push-Pull" (description in the configuration chapters).

2) DO switch mode configured as "High-Side" (description in the configuration chapters).

LioN-X Class A/B IO-Link ports

Device variant	Port	Pin 1 U _S	Pin 4 / Ch. A (C/Q)				Pin 2 / Ch. B (I/Q)		
0980 XSL 3x13...	Info:	–	4 x Class A 4 x Class B	Type 1	Supply by U _S ¹⁾	Supply by U _S ²⁾	Type 1	Supply by U _S ¹⁾	Supply by U _{Aux}
	X8:	Out (4 A)	IOL (Class B)	DI	DO (0.5 A)	DO (2 A)	–	–	DO/Pwr (2 A)
	X7:	Out (4 A)	IOL (Class B)	DI	DO (0.5 A)	DO (2 A)	–	–	DO/Pwr (2 A)
	X6:	Out (4 A)	IOL (Class B)	DI	DO (0.5 A)	DO (2 A)	–	–	DO/Pwr (2 A)
	X5:	Out (4 A)	IOL (Class B)	DI	DO (0.5 A)	DO (2 A)	–	–	DO/Pwr (2 A)
	X4:	Out (4 A)	IOL (Class A)	DI	DO (0.5 A)	DO (2 A)	DI	DO (2 A)	–
	X3:	Out (4 A)	IOL (Class A)	DI	DO (0.5 A)	DO (2 A)	DI	DO (2 A)	–
	X2:	Out (4 A)	IOL (Class A)	DI	DO (0.5 A)	DO (2 A)	DI	DO (2 A)	–
	X1:	Out (4 A)	IOL (Class A)	DI	DO (0.5 A)	DO (2 A)	DI	DO (2 A)	–

Table 5: Port configuration of 0980 XSL 3x13... variants

¹⁾ DO switch mode configured as "Push-Pull" (description in the configuration chapters).

²⁾ DO switch mode configured as "High-Side" (description in the configuration chapters).

LioN-Xlight Class A IO-Link ports

Device variant	Port	Pin 1 U _S	Pin 4 / Ch. A (C/Q)			Pin 2 / Ch. B (I/Q)
0980 LSL 3x11...	Info:	–	Class A	Type 1	Supply by U _S ¹⁾	Type 1
	X8:	Out (2 A)	IOL	DI	DO (0.5 A*)	DI
	X7:	Out (2 A)	IOL	DI	DO (0.5 A*)	DI
	X6:	Out (2 A)	IOL	DI	DO (0.5 A*)	DI
	X5:	Out (2 A)	IOL	DI	DO (0.5 A*)	DI
	X4:	Out (2 A)	IOL	DI	DO (0.5 A*)	DI
	X3:	Out (2 A)	IOL	DI	DO (0.5 A*)	DI
	X2:	Out (2 A)	IOL	DI	DO (0.5 A*)	DI
	X1:	Out (2 A)	IOL	DI	DO (0.5 A*)	DI

Table 6: Port configuration of 0980 LSL 3x11... variants

Device variant	Port	Pin 1 U _S	Pin 4 / Ch. A (C/Q)			Pin 2 / Ch. B (I/Q)
0980 LSL 3x10...	Info:	–	Class A	Type 1	Supply by U _S ¹⁾	Type 1
	X8:	Out (0.7 A)	–	DI	–	DI
	X7:	Out (0.7 A)	–	DI	–	DI
	X6:	Out (0.7 A)	–	DI	–	DI
	X5:	Out (0.7 A)	–	DI	–	DI
	X4:	Out (2 A)	IOL	DI	DO (0.5 A*)	DI
	X3:	Out (2 A)	IOL	DI	DO (0.5 A*)	DI
	X2:	Out (2 A)	IOL	DI	DO (0.5 A*)	DI
	X1:	Out (2 A)	IOL	DI	DO (0.5 A*)	DI

Table 7: Port configuration of 0980 LSL 3x10... variants

¹⁾ With DO Switch Mode configured as "Push-Pull" (see description in the configuration chapters).

* For **UL applications**: Max. 0.25 A DO.

5 Overview of product features

5.1 CC-Link IE Field Basic product features

CC-Link IE Field Basic network

- ▶ Number of stations: 4 (2 for device variant 0980 LSL 3410-121-0006-010).
- ▶ RX – 64 bits (per station)
- ▶ RY – 64 bits (per station)
- ▶ RWw – 32 words (per station)
- ▶ RWr – 32 words (per station)

Data connection

The connection option provided by LioN-X is the widely-used M12 connector with D-coding for the CC-Link IE Field Basic network.

The connectors are also color-coded to prevent the ports from being mixed up.

Data transmission rates

Featuring a transmission rate of up to 100 MBit/s, the CC-Link IE Field Basic devices can handle both fast transmission of I/O data and transmission of larger volumes of data.

Diagnostic data

The devices support diagnosis flags and extended diagnostic data that can be appended to the I/O data.

5.2 I/O port features

IO-Link specification.

LioN-X is ready for IO-Link specification v1.1.3.

8 x IO-Link Master ports

Depending on the device variant, the device has 4 IO-Link Class A ports, 4 IO-Link Class A ports and 4 IO-Link Class B ports, or 8 IO-Link Class A ports with an additional digital input and optional output (0980 XSL 3x13... variants) on pin 2 of the I/O port. For detailed information see chapter [I/O port overview](#) on page 21.



Warning: If modules with electric isolation and modules without electric isolation are used within the same system, the electric isolation of all connected modules is annulled.

IO-Link port connections

The IO-Link port connection option provided by the module series is the 5-pin M12 connector.

Validation & Backup

The Validation & Backup function checks if the right device is connected and stores / monitors the parameters of the IO-Link Device. The function thus gives you an easy option for replacing the IO-Link Device.

This is possible as of IO-Link specification V1.1 and only if the IO-Link Device **and** the IO-Link Master support the function.

LED

You can see the status of a port by the color of the matching LEDs and their flash pattern. For details on the meanings of the LED colors, please see section [LEDs](#) on page 178.

5.3 Integrated Web server

Network parameter display

Get an overview of network parameters such as the IP address, subnet mask and gateway.

Displaying diagnostics

View diagnostics via the integrated Web server.

User management

Use the integrated Web server for convenient management of all users.

IO-Link Device parameters

Reading and writing of IO-Link Device parameters is supported. The system command Store parameters is needed after parameter writing, to take over the changed parameter into the IO-Link Master backup memory when enabled.

HTTPS

LioN-X supports several security mechanisms (see also [Security features](#) on page 27). One of them is HTTPS (only applicable for device variants 0980 XSL 3912-121-027D-01F and 0980 XSL 3913-121-027D-01F), which allows encryption-based secure communication to access Web pages.

5.4 Security features

Firmware signature

The official firmware update packages contain a signature which helps prevent the system against manipulated firmware updates.

Syslog

The LioN-X multiprotocol variants support the traceability of messages centrally managed and logged via Syslog.

User manager

The Web server provides a user manager to help protect the Web interface against unauthorized access. You can manage the users by groups with different access levels “Admin” or “Write”.

Default user settings:

User: admin

Password: private



Attention: Change the default settings to help protect the device against unauthorized access.

5.5 Other features

Interface protection

The devices have reverse polarity, short-circuit and overload protection for each interface.

For more details, see section [Port assignments](#) on page 37.

Failsafe

The devices support a failsafe function. This allows you to define the behavior of every single channel configured as an output in the case of invalid PLC data (e.g. PLC in STOP) or of lost PLC communication.

Industrial Internet of Things

LioN-X is industry 4.0 ready and supports the integration in IIoT networks via REST API and the IIoT-relevant protocols MQTT, OPC UA and CoAP.

Color-coded connectors

The colored connectors help you avoid confusion in your cabling.

IP protection classes: IP65 / IP67 / IP69K

The IP protection class describes environmental influences that the devices can be exposed to without risk and without suffering damage or causing a risk for the user.

The whole LioN-X family offers IP65, IP67 and IP69K.

6 Assembly and wiring

6.1 General information

Mount the device on a flat surface using 2 screws (M4x 25/30). The torque required here is 1 Nm. Use washers for all fastening methods as per DIN 125.

i **Attention:** The devices have a ground connection with an M4 thread for the conduction of interference currents and the EMC immunity. This is labeled with the symbol for the ground and the designation "FE".

i **Attention:** Use a low-impedance connection to connect the device to the reference ground. When using a grounded mounting surface, you can make the connection directly via the fixing screws.

i **Attention:** If the mounting surface is ground-free, use a ground strap or a suitable FE line (FE = Functional Earth). Use an M4 screw to connect the ground strap or the FE line to the ground point and if possible put a washer and a toothed washer below the fixing screw.

6.2.1 LionX multiprotocol variants with CC-Link IE Field Basic

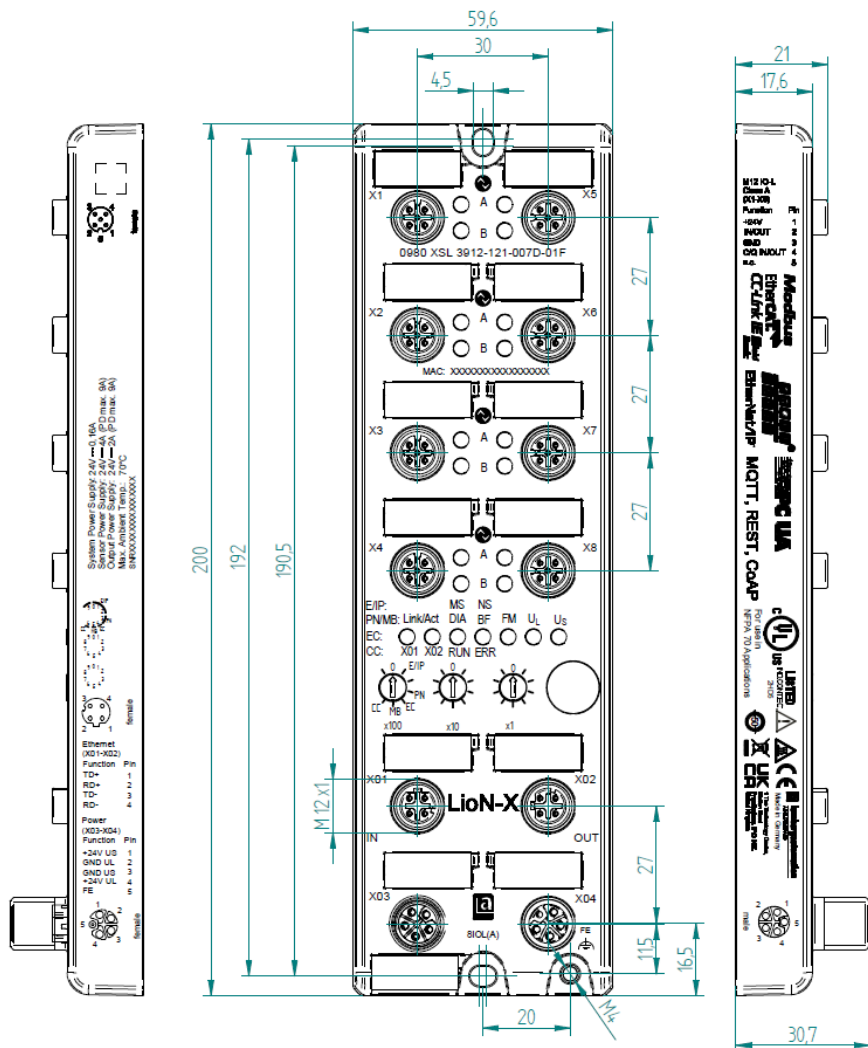


Figure 1: 0980 XSL 3912-121-007D-01F

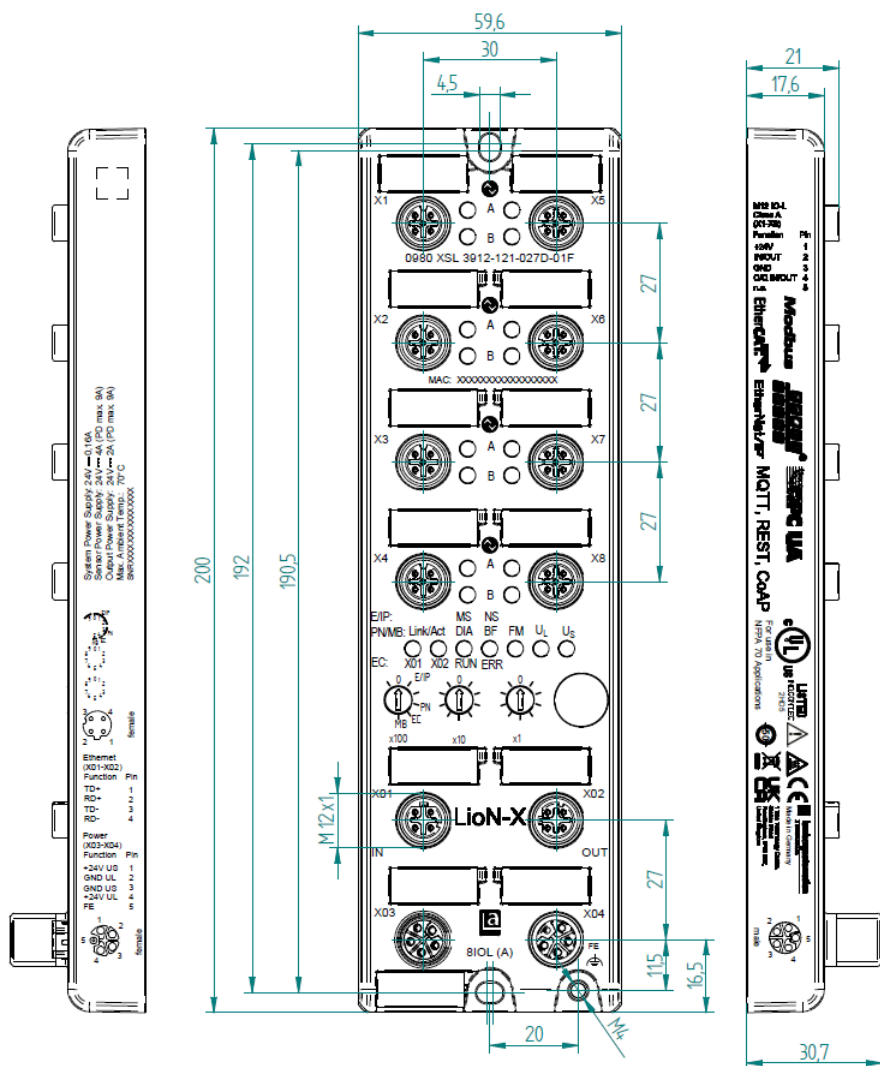


Figure 2: 0980 XSL 3912-121-027D-01F

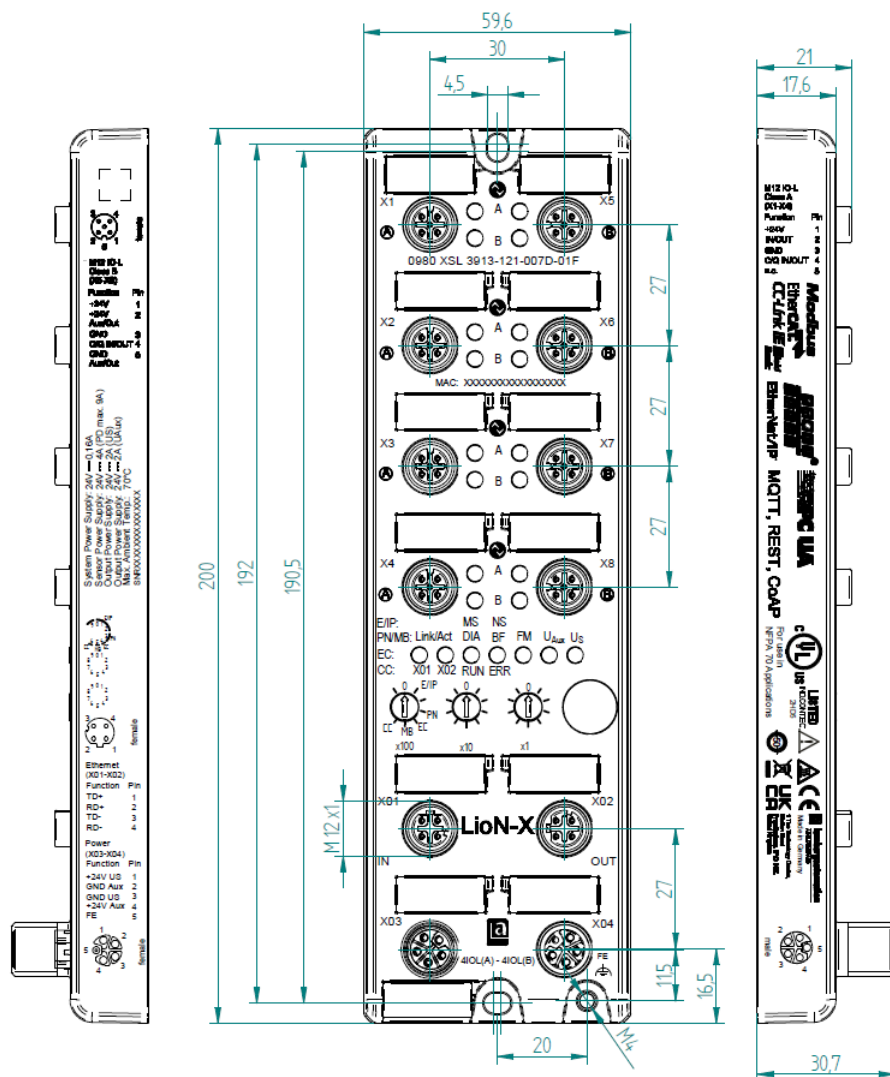


Figure 3: 0980 XSL 3913-121-007D-01F

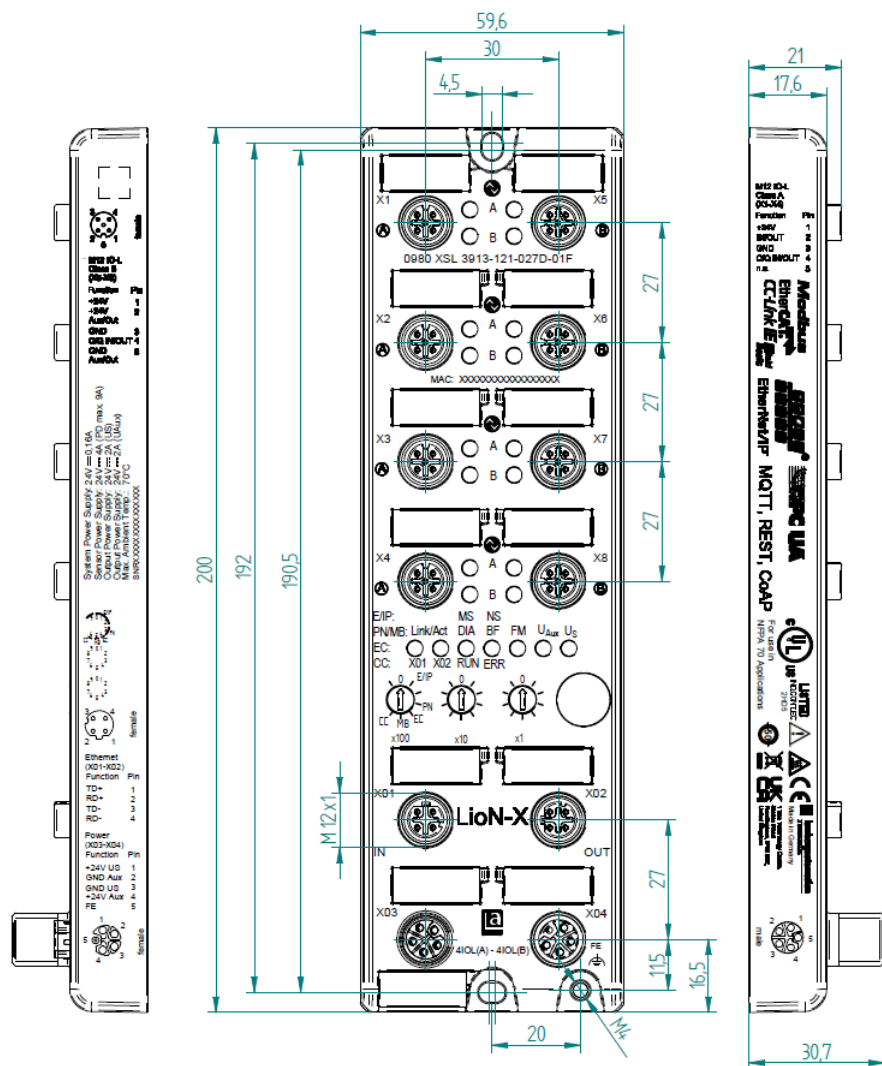


Figure 4: 0980 XSL 3913-121-027D-01F

6.2.2 Lion-Xlight variants with CC-Link IE Field Basic

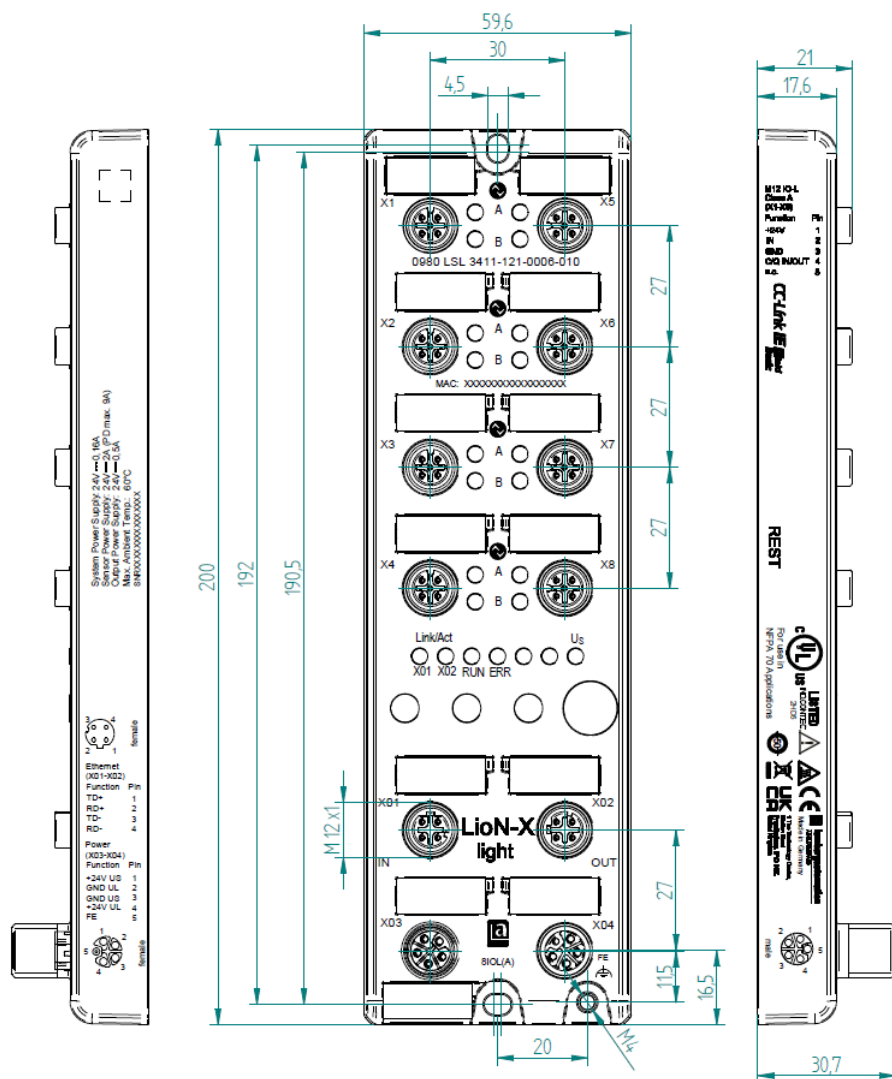


Figure 5: 0980 LSL 3411-121-0006-010

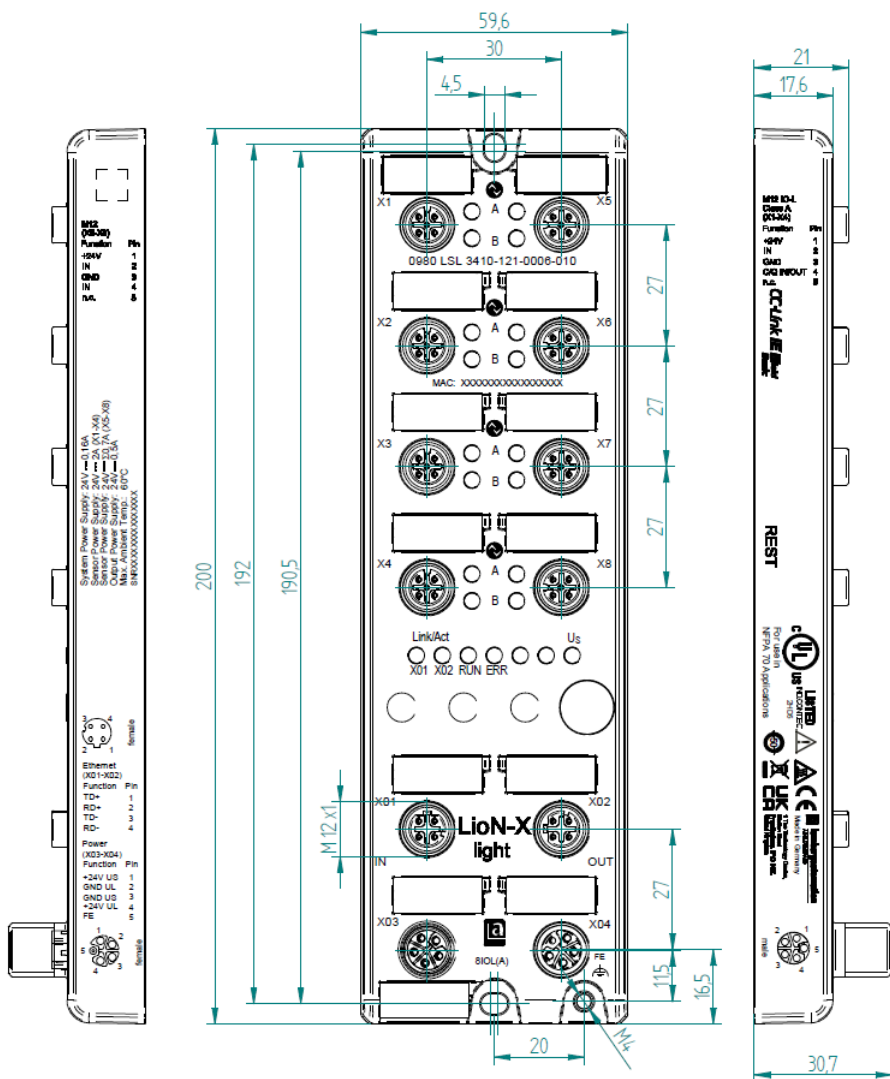


Figure 6: 0980 LSL 3410-121-0006-010

6.2.3 Notifications

**Attention:**

For **UL applications**, be sure to use a UL-certified cable with a suitable evaluation to connect the devices (CYJV or PVVA). To program the control, please refer to the OEM information, and only use suitable accessories.

Only approved for interior use. Please note the maximum elevation of 2000 meters. Approved up to a maximum soiling level of 2.



Warning: Terminals, housings field-wired terminal boxes or components can exceed temperatures of +60 °C (140 °F).



Warning: For **UL applications** at a maximum ambient temperature of +70 °C (158 °F):

Use temperature-resistant cables with heat resistance up to at least +125 °C (257 °F) for all LioN-X and LioN-Xlight variants.



Warning: Observe the following maximum output power for the sensor supply of Class A devices:

Max. 4.0 A per port; for **UL applications** max. 5 A for every port pair X1/X2, X3/X4, X5/X6, X7/X8; max. 9.0 A in total (with derating) for the whole port group X1 .. X8.



Warning: Observe the following maximum output power for the sensor supply of Class A/B devices:

Max. 4.0 A per port; for **UL applications** max. 5.0 A from U_S power supply for every port pair X1/X2, X3/X4, X5/X6, X7/X8 and max. 5.0 A from U_{AUX} power supply in total for port group X5/X6/X7/X8; max. 9.0 A in total (with derating) for the whole port group X1 .. X8.

6.3 Port assignments

All the contact arrangements shown in this chapter show the frontal view of the connection area for the connectors.

6.3.1 Ethernet ports, M12 socket, 4-pin, D-coded

Color coding: green

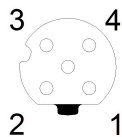


Figure 7: Schematic drawing, ports X01, X02

Port	Pin	Signal	Function
Ethernet Ports X01, X02	1	TD+	Transmit data plus
	2	RD+	Receive data plus
	3	TD-	Transmit data minus
	4	RD-	Receive data minus

Table 8: Assignment of ports X01, X02



Caution: Risk of destruction! Never connect the power supply to the data cables.

6.3.2 Power supply with M12 power L-coded

Color coding: gray

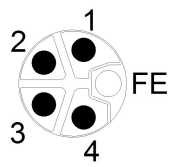


Figure 8: Schematic diagram of the M12 L-coding (connector X03 for Power In)

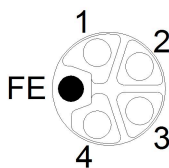


Figure 9: Schematic diagram of the M12 L-coding (socket X04 for Power Out)

6.3.2.1 IO-Link Master with Class A ports

Power supply	Pin	Signal	Function
	1	U_S (+24 V)	Sensor/system power supply
	2	GND_ U_L	Ground/reference potential U_L
	3	GND_ U_S	Ground/reference potential U_S ¹
	4	U_L (+24 V)	Load supply (NOT electrically isolated to U_S internally in device)
	5	FE	Functional ground

Table 9: Power supply with M12-Power Class A



Attention: Only use power supply units for the system/sensor and actuator supply that correspond to PELV (Protective Extra Low Voltage) or SELV (Safety Extra Low Voltage). Power supplies according to EN 61558-2-6 (transformers) or EN 60950-1 (switching power supply units) fulfill these requirements.

¹ U_L and U_S ground connected in device

6.3.2.2 IO-Link Master with Class A/B ports

Power supply	Pin	Signal	Function
Mixed IO-Link (Class A/B) I/O ports	1	U_S (+24 V)	Sensor/system power supply
	2	GND_U_{AUX}	Ground/reference potential U_{AUX} (electrically isolated to GND_U_S internally in device)
	3	GND_U_S	Ground/reference potential U_S
	4	U_{AUX} (+24 V)	Auxiliary supply (electrically isolated to U_S internally in device)
	5	FE	Functional ground

Table 10: Power supply with M12-Power Class A/B



Attention: Only use power supply units for the system/sensor and actuator supply that correspond to PELV (Protective Extra Low Voltage) or SELV (Safety Extra Low Voltage). Power supplies according to EN 61558-2-6 (transformers) or EN 60950-1 (switching power supply units) fulfill these requirements.

6.3.3 I/O ports as M12 sockets

Color coding: black

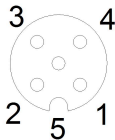


Figure 10: Schematic drawing I/O port as M12 socket IO-Link

6.3.3.1 IO-Link ports (Class A and Class B)

0980 XSL 3x12-121...	Pin	Signal	Function
IO-Link Class A, ports X1 ... X8	1	+24 V	power supply +24 V
	2	IN/OUT	Ch. B: Digital input or digital output
	3	GND	Ground/reference potential
	4	C/Q	Ch. A: IO-Link data communication, digital input or digital output
	5	n.c.	not connected
0980 XSL 3x13-121...	Pin	Signal	Function
IO-Link Class A, ports X1 ... X4	1	+24 V	power supply +24 V
	2	IN/OUT	Ch. B: Digital input or digital output
	3	GND	Ground/reference potential
	4	C/Q	Ch. A: IO-Link data communication, digital input or digital output
	5	n.c.	not connected
IO-Link Class B, ports X5 ... X8	1	+24 V	power supply +24 V
	2	+24 V AUX/OUT	Ch. B: Auxiliary power supply (electrically isolated with respect to the sensor/ system power supply U_S) or digital output
	3	GND	Ground/reference potential of +24 V
	4	C/Q	Ch. A: IO-Link data communication, digital input or digital output
	5	GND AUX	Ground/reference potential of +24 V AUX/ OUT
0980 LSL 3x11-121...	Pin	Signal	Function
IO-Link Class A, ports X1 ... X8	1	+24 V	power supply +24 V
	2	IN	Ch. B: Digital input
	3	GND	Ground/reference potential
	4	C/Q	Ch. A: IO-Link data communication, digital input or digital output
	5	n.c.	not connected

0980 LSL 3x10-121...	Pin	Signal	Function
IO-Link Class A, ports X1 .. X4	1	+24 V	power supply +24 V
	2	IN	Ch. B: Digital input
	3	GND	Ground/reference potential
	4	C/Q	Ch. A: IO-Link data communication, digital input or digital output
	5	n.c.	not connected
Digital Input, ports X5 .. X8	1	+24 V	power supply +24 V
	2	IN	Ch. B: Digital input
	3	GND	Ground/reference potential
	4	IN	Ch. A: Digital input
	5	n.c.	not connected

Table 11: I/O ports as IO-Link Class A and Class B

Used signal names compared to the IO-Link specification conventions:

Pin	LioN-X	IO-Link specification	Comment
1	+24 V	L+	Supplied by U_S
2	IN/OUT	I/Q	
	+24 V AUX/OUT	2L	Supplied by U_{AUX}
3	GND	L-	
4	C/Q IN/OUT	C/Q	
5	GND AUX	2M	

7 Starting operation

7.1 CSP+ file

A CSP+ file describes the information of a CC-Link device and is required to configure the LioN-X and LioN-Xlight variants in an engineering tool. Each device variant requires its own CSP+ file. The file can be downloaded from the product pages on our online catalog: catalog.belden.com

On request, the CSP+ file is also sent by the support team.

The CSP+ file and the associated icons are grouped together in an archive file named "0x4DF_0980 XSL 3912-121-007D-01F_1.0_en.CSPP.zip".

"0x4DF" stands for the vendor ID of Belden Deutschland GmbH, "0980 XSL 3912-121-007D-01F" is the model number of the LioN-X variant.

Download this file and install it as described in chapter [Configuration and operation with GxWorks3](#) on page 78.

Install the CSP+ file for the respective device variant by using the hardware or network configuration tool of your controller manufacturer.

In GxWorks®, install the files with the CSP+ Hardware Installation Tool.

The LioN-X and LioN-Xlight variants are then available in the hardware catalog as Communications Adapter.

7.2 MAC addresses

Every device has three unique assigned MAC addresses that cannot be changed by the user. The first assigned MAC address is printed onto the device.

7.3 State on delivery

CC-Link IE Field Basic parameters in state on delivery or after a factory reset:

Network mode:	Static
Static IP address:	192.168.3.XXX (XXX = rotary switch position or last stored data)
Subnet mask:	255.255.255.0
Gateway address	192.168.3.100
Device designations:	0980 XSL 3912-121-007D-01F 0980 XSL 3912-121-027D-01F 0980 XSL 3913-121-007D-01F 0980 XSL 3913-121-027D-01F 0980 LSL 3411-121-0006-010 0980 LSL 3410-121-0006-010
Product type:	CC-Link IE Field Basic Slave Station

7.4 Setting the rotary encoding switches

The following LioN-X IO-Link Master variants support multiprotocol application for the protocols EtherNet/IP (E/IP), PROFINET (P), EtherCAT® (EC) and Modbus TCP (MB):

- 0980 XSL 3912-121-007D-00F

The following LioN-X IO-Link Master variants additionally provide the protocol CC-Link IE Field Basic (CC):

- 0980 XSL 3912-121-007D-01F
- 0980 XSL 3912-121-027D-01F
- 0980 XSL 3913-121-007D-01F
- 0980 XSL 3913-121-027D-01F



Caution: Risk of device damage due to corrupt device memory

Any interruption of the power supply to the device during and after protocol selection can lead to a corrupt device memory.

After selecting a protocol followed by a restart of the device, the new protocol is initialized. This can take up to 15 seconds. During this time the device is not usable and the LED indicators are out of function. When the protocol change is complete, the LED indicators return to normal operation and the device can be used again.

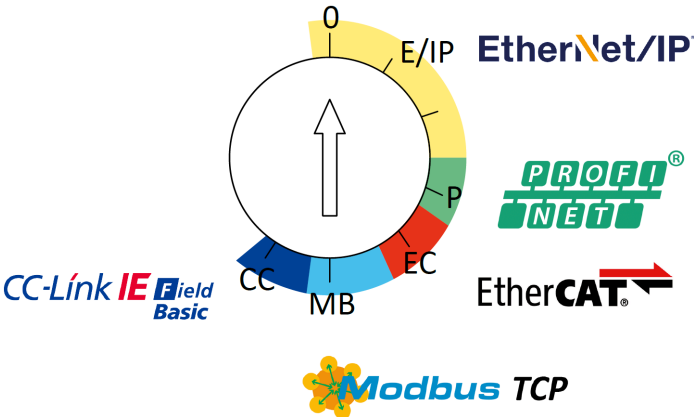
- Make sure that the power supply is maintained during the entire process.

The LioN-X multiprotocol variants allow you to select different protocols for communication within an industrial Ethernet system. In this way the IO-Link Masters with multiprotocol function can be integrated into different networks without it being necessary to purchase products specific for each protocol. This technology also gives you the option to use the same IOL-Master in different environments.

Using rotary encoding switches at the lower front of the devices, you can easily and conveniently set both the protocol and the address of the device, if the protocol to be used supports this. Once you have made a protocol selection and started the cyclical communication, the device stores this

setting permanently and uses the selected protocol from this point on. To use another supported protocol with this device, perform a factory reset.

The multiprotocol devices have a total of three rotary encoding switches. With the first rotary encoding switch (x100) you set the protocol by using the corresponding switch position. Additionally, x100 is used to set the third last digit of the IP address for EIP.



With the other rotary encoding switches (x10 / x1), you set the last two digits of the IP address when you are using EtherNet/IP, Modbus TCP or CC-Link IE Field Basic.

Protocol	x100	x10	x1
EtherNet/IP	0-2	0-9	0-9
PROFINET	P	–	–
EtherCAT®	EC	–	–
Modbus TCP	MB	0-9	0-9
CC-Link IE Field	CC	0-9	0-9

Table 12: Assignment of the rotary encoding switches for each protocol

The setting you make to select a protocol is described detailed in the protocol-specific sections.

In delivery state no protocol settings are stored in the device. In this case only the desired protocol has to be chosen. To take over a changed rotary

encoding switch setting (protocol setting), a power cycle or “Reset” from the Web interface is necessary.

Once you have set the protocol using the rotary encoding switches, the device stores this setting when it starts in cyclic communication. Changing the protocol using the rotary encoding switch is no longer possible after this point. The device will always start using the stored protocol from that point on. The IP address can be changed depending on the selected protocol.

To change the protocol, carry out a factory reset. In this way you restore the factory settings of the respective device. How you perform the factory reset for your device is described in chapter [Factory reset](#) on page 48.

If you position the rotary encoding switch in a manner that is invalid, the device signals this to you with a blink code (the RUN LED blinks continuously).

7.4.1 CC-Link IE Field Basic

If you decide to use CC-Link IE Field Basic as a protocol, use the first rotary encoding switch to select the protocol. The second rotary encoding switch (x10) can be used to configure the 10 position of the last octet of the IP address, and the third rotary encoding switch (x1) allows you to configure the 1 position. Values between 0 and 9 can be selected for the second and third switches. The first three octets of the IP address are set by default to 192.168.3.

For example, the rotary encoding switch setting 6(x100), 1(x10) and 0(x1) gives you an IP address of 192.168.3.10 for CC-Link IE Field Basic. It is only possible to assign IP addresses between 192.168.3.1 and 192.168.3.99 for CC-Link IE Field Basic via the rotary switches.

Rotary switch setting	Function
600 (network parameters already saved)	The network parameters last saved are used (IP address, subnet mask, gateway address).
600 ... 699	The last 2 digits of the saved or preset IP address are overwritten by the setting of the rotary switch.
979	The device performs a reset to the factory settings. The network parameters are also reset to the default values. Communication is not possible in this operation mode.

Table 13: Setting options of the rotary encoding switches for CC-Link IE Field Basic

7.4.2 Factory reset

A factory reset restores the original factory settings and thus resets the changes and settings you have made up to that point. It also resets the protocol selection. To perform a factory reset, set the first rotary encoding switch (x100) to 9, the second (x10) to 7, and the third (x1) also to 9.

Afterwards perform a power cycle and wait 10 seconds due to internal memory write processes.

During the factory reset, the U_S LED is blinking red. After the internal memory write processes have finished, the U_S LED returns to display static green or red light, in dependency of the actual U_S voltage.

	x100	x10	x1
Factory Reset	9	7	9

Follow the steps from section [Setting the rotary encoding switches](#) again to select a new protocol.

For performing a factory reset via software configuration, see chapter [OPC UA configuration](#) on page 103 and the configuration section.

7.5 Setting network parameters

Use the two right-hand rotary switches (x10 and x1) on the front of the device to set the last octet of the static IP address. Each rotary switch in the range of CC-Link IE Field Basic is assigned to one decimal digit, so that you can configure a number between **0 – 99**. During startup, the position of the rotary switches is typically read within one time cycle.

The complete IP address, the subnet mask, the gateway address and the network mode can be configured and stored via the Web server or any other available configuration interfaces. New configuration interfaces can only be applied to after a restart of the device.

For additional information, see chapter [Setting the rotary encoding switches](#).

8 Configuration CC-Link IE Field Basic

Parameters of the LioN-X device can be configured via SNMP, the Web server or IIoT protocols. Acyclic messages over SNMP are sent to read and write the configuration. When sending, all existing parameters will be overwritten by this data and the content of the SNMP messages has the highest valence.

To avoid parameter overwriting by the Web server or IIoT protocols during operation, some lock parameters can be enabled in the PLC configuration respectively in the configuration assembly.

The following chapters represent different setting groups with its configuration parameters. The default values are highlighted.

8.1 General settings

Setting	Description	Default value
Suppress U_{Aux} Diagnosis Mode	Report U_L/U_{Aux} supply voltage fault 0 = Report U_L/U_{Aux} supply voltage fault enabled 1 = Report U_L/U_{Aux} supply voltage fault disabled 2 = Auto	0
Suppress Actuator Diagnosis without U_L	Report actuator fault without U_L/U_{Aux} voltage 0 = Report actuator fault without U_L/U_{Aux} voltage enabled 1 = Report actuator fault without U_L/U_{Aux} voltage disabled	0
Suppress U_S Diagnosis	Report U_S voltage fault 0 = Diagnosis disabled 1 = Diagnosis enabled	0
Reserved	Reserved	0
Output Auto Restart	Output auto restart 0 = Output auto restart disabled 1 = Output auto restart enabled	0
Web Interface Lock	Web interface lock 0 = Web interface lock disabled 1 = Web interface lock enabled	0
Forcing Lock	Force mode lock 0 = Force lock disabled 1 = Force lock enabled	0
External Configuration Lock	External configuration lock 0 = External configuration lock disabled 1 = External configuration lock enabled	1

8.1.1 Force mode lock

The input and output process data can be forced via different interfaces (e.g. Web interface, REST, OPC UA, MQTT). The support of interfaces depends on the available software features. If the *Force mode lock* is enabled, it is no longer possible to force input and output process data through these interfaces.



Danger: Risk of physical injury or death! Unattended forcing can lead to unexpected signals and uncontrolled machine movements.

8.1.2 Web interface lock

The Web interface access can be configured. If *Web interface lock* is enabled, the Web pages are no longer reachable.

8.1.3 Report U_L/U_{AUX} supply voltage fault

During commissioning, it is possible that no power supply is connected to the U_L/U_{AUX} pins. Therefore it can be helpful to suppress and disable the *U_L/U_{AUX} supply voltage fault* diagnosis.

8.1.4 Report actuator fault without U_L/U_{AUX} voltage

During commissioning, it is possible that no power supply is connected to the U_L/U_{AUX} pins. Therefore it can be helpful to suppress and disable the *Report actuator fault without U_L/U_{AUX} voltage* diagnosis.

8.1.5 Report U_S voltage fault

During commissioning, it is possible that no power supply is connected to the U_S pins. Therefore it can be helpful to suppress and disable the *Report U_S voltage fault* diagnosis.

8.1.6 External configuration lock

Configuration parameters can be set via different alternative interfaces (e.g. Web interface, REST, OPC UA, MQTT). An external configuration can only be done, if no cyclic PLC connection is active. Every new PLC configuration overwrites the external configuration settings.

8.2 Port configuration X1 .. X8

Setting	Description	Default value
Port Mode	Port Mode 0: Deactivated 1: IO-Link Manual 2: IO-Link Auto 3: Digital Input 4: Digital Output	3
Validation Check	Validation Option 0: No device check and clear (no data storage) 1: Type compatible V1.0 device (no data storage) 2: Type compatible V1.1 device (no data storage) 3: Type compatible V1.1 device with Backup & Restore (download + upload) 4: Type compatible V1.1 device with Restore (download master to device)	0
IQ (Pin 2) Mode	IQ Mode 0: Deactivated 1: Digital Input 2: Digital Output 5: Aux* *exclusively applicable for Class A/B Mixmodules	1
Cycle Time	Cycle Time 0: As fast as possible 1: 1.6 ms 2: 3.2 ms 3: 4.8 ms 4: 8.0 ms 5: 20.8 ms 6: 40.0 ms 7: 80.0 ms 8: 120.0 ms	0
Vendor ID	Vendor ID 0 .. 65535 ("0")	0
Device ID	Device ID 0 .. 16777215 ("0")	0

Setting	Description	Default value
IO-Link Failsafe Mode	Failsafe Mode 0: Set Low 1: Set High 2: Hold Last 3: Replacement Value 4: IO-Link Master Command	0
IO-Link Failsafe Value 0..31	IOL Failsafe replacement values Between 0 .. 255	0
Swap Length Consuming	Swap Length (Consuming data) 0: DWORD 1: WORD	0
Offset Consuming	Swap Offset (Consuming data) 0 .. 30 Byte	0
Swap Count Consuming	Swap Count (Consuming data) 0 .. 30 Byte	0
Swap Length Producing	Swap Length (Producing data) 0: DWORD 1: WORD	0
Offset Producing	Swap Offset (Producing data) 0 .. 30 Byte	0
Swap Count Producing	Swap Count (Producing data) 0 .. 30 Byte	0
Sensor Supply Disabled	Sensor Supply Disabled 0: Supply electric voltage to sensor 1: Do not supply electric voltage to sensor	0
Suppress all Diagnosis	Suppress all Diagnosis 0: Generate diagnosis on this channel 1: Do not generate any diagnosis on this channel	0
Surv. Timeout (Pin 2)	DO Surveillance Timeout for Pin 2 (IQ) Valid values: 0 .. 255	80
Surv. Timeout (Pin 4)	DO Surveillance Timeout for Pin 4 (CQ) Valid values: 0 .. 255	80

Setting	Description	Default value
Failsafe Mode SIO (Pin 2)	DO Failsafe for Pin 2 (IQ) 0: Set Low 1: Set High 2: Hold Last	0
Failsafe Mode SIO (Pin 4)	DO Failsafe for Pin 4 (CQ) 0: Set Low 1: Set High 2: Hold Last	0
DI Filter (Pin 2)	DI Filter for Pin 2 (IQ) 0: Disabled 1: 10 ms 2: 20 ms 3: 30 ms 4: 60 ms 5: 100 ms 6: 150 ms	0
DI Filter (Pin 4)	DI Filter for Pin 4 (CQ) 0: Disabled 1: 10 ms 2: 20 ms 3: 30 ms 4: 60 ms 5: 100 ms 6: 150 ms	0
DI Logic (Pin 2)	DI Logic for Pin 2 (IQ) 0: Normally Open 1: Normally Close	0
DI Logic (Pin 4)	DI Logic for Pin 4 (CQ) 0: Normally Open 1: Normally Close	0
DO Restart (Pin 2)	DO Restart for Pin 2 (IQ) 0: Disable 1: Enable	0
DO Restart (Pin 4)	DO Restart for Pin 4 (CQ) 0: Disable 1: Enable	0

Setting	Description	Default value
Error LED Disable (Pin 2)	Disable Pin 2 Error LED 0: Enable LED on channel B 1: Disable LED on channel B	0
Error LED Disable (Pin 4)	Disable Pin 4 Error LED 0: Enable LED on channel A 1: Disable LED on channel A	0
Level LED Disable (Pin 2)	Disable Pin 2 Level LED 0: Enable LED on channel B 1: Disable LED on channel B	0
Level LED Disable (Pin 4)	Disable Pin 4 Level LED 0: Enable LED on channel A 1: Disable LED on channel A	0
Use Push-Pull (Pin 4)	Use Push-Pull for Pin 4 0: Use High-Side switches 1: Use Push-Pull	0
Current limit (Pin 2)	Pin 2 current limit (maximum current limit till Pin 2 is turned off) 0 .. 65535	65535
Current limit (Pin 4)	Pin 4 current limit (maximum current limit till Pin 4 is turned off) 0 .. 65535	65535
DI Latch (Pin 4)	Enable Input Latch for Pin 4 0: Disable 1: Enable	0
DI Latch (Pin 2)	Enable Input Latch for Pin 2 0: Disable 1: Enable	0
DI Extension (Pin 4)	Set Input Extension for Pin 4 0 .. 255 ms	0
DI Extension (Pin 2)	Set Input Extension for Pin 2 0 .. 255 ms	0

8.2.1 Port Mode

The *Port Mode* describes how the IO-Link Master handles the presence of an IO-Link device at the port.

Deactivated:

The IO-Link port is deactivated but can be configured for later use. No diagnostics are generated if the IO-Link device is not connected.

IO-Link Manual:

The IO-Link port is activated and explicit port configuration can be done for the parameters *Validation and Backup* (Inspection Level), *Vendor ID*, *Device ID* and *Cycle Time*.

IO-Link Auto:

The IO-Link port is activated and no explicit port configuration is needed. Configurations such as *Validation and Backup* (Inspection Level), *Vendor ID*, *Device ID* and *Cycle Time* are not required.

Digital Input:

In this mode, the channel operates as digital input. The channel state can be seen in the *Digital Input Channel* status of the cyclic process data.

Digital Output:

In this mode, the channel operates as digital output. The channel can be controlled by the *Digital Output Channel Control* (first two bytes of the output data) or by the *IO-Link Output Data* (first byte of each IO-Link device output data) of the cyclic process data. This depends on the *Digital Output Control* parameter in the general settings.

8.2.2 Validation and Backup

With this parameter, the user can set the behavior of the IO-Link ports regarding the type compatibility and data storage mechanism of the connected IO-Link Device.

The precondition for using *Validation and Backup* is that you configure the *Port Mode* to "IO-Link Manual".

The IO-Link Master has a backup memory which can be used for storing the device parameters and for restoring them on the device. This backup memory can be deleted by the following events:

- ▶ IO-Link Master factory reset
- ▶ *Channel Mode* reconfiguration, e.g. from "Digital-Input" to "IO-Link"
- ▶ *Validation and Backup* reconfiguration, e.g. from "No device check" to "Type compatible V1.1 device with Backup & Restore"

For further information refer to the 'IO-Link Interface and System Specification' version 1.1.3 which can be downloaded from <https://io-link.com/>

No device check (no data storage):

No check of connected Vendor ID or Device ID and no "Backup and Restore" support of the IO-Link Master parameter server.

Type compatible V1.0 device (no data storage):

Type compatible according IO-Link specification V1.0 which includes validation of Vendor ID and Device ID. The IO-Link specification V1.0 does not support IO-Link Master parameter server.

Type compatible V1.1 device (no data storage):

Type compatible according IO-Link specification V1.1 which includes validation of Vendor ID and Device ID. "Backup and Restore" is disabled.

Type compatible V1.1 device with Backup + Restore

(upload + download):

Type compatible according IO-Link specification V1.1 which includes validation of Vendor ID and Device ID. "Backup and Restore" is enabled.

Pay attention to the following explanations regarding *Backup and Restore* conditions:

► Backup (Device to Master):

A Backup (upload from IOL-Device to IOL-Master) is performed when an IO-Link Device is connected and the Master does not have any valid parameter data. The read parameter data are permanently stored on the IO-Link Master.

An upload will also be performed, when the IO-Link Device has set the DS_UPLOAD_FLAG (Data Storage Upload Flag). This IOL-Device flag can be set in two ways:

- Parameters written to IOL-Device in *Block Parameter* mode: An IO-Link Device sets the DS_UPLOAD_FLAG self-dependent, if the parameters were written in block parameter mode to the IO-Link Device with the last system command ParamDownloadStore (e.g. by a third party USB IO-Link Master for commissioning).
- Parameters written to IOL-Device in *Single Parameter* mode: If single parameter data is changed on the IOL-Device during runtime, the stored device parameters on the IOL-Master can be updated using the ParamDownloadStore (index 0x0002, subindex 0x00, value 0x05) command. This command sets the DS_UPLOAD_REQ flag on the IOL-Device and thus the IO-Link Master executes an upload procedure from the IO-Link Device.

► Restore (Master to Device):

A Restore (download from IOL-Master to IOL-Device) is performed when an IO-Link Device is connected and the IO-Link Master has valid parameter data stored which are usable for the IOL-Device and not equal compared to the device parameters.

The restore procedure can be blocked by the IO-Link Device via the *Device Access Locks* parameter when supported by the IO-Link Device (Index 0x000C, refer to vendor specific IO-Link Device documentation).

Type compatible V1.1 device with Restore (download Master to Device):

Type compatible according IO-Link specification V1.1 which includes validation of Vendor ID and Device ID. Only "Restore" is enabled.

Pay attention to the following explanations regarding *Restore* conditions:

► Restore (Download / IOL-Master to IOL-Device):

A Restore (download from IOL-Master to IOL-Device) is performed when an IO-Link Device is connected and the IO-Link Master has valid parameter data stored which are usable for the IOL-Device and not equal compared to the device parameters.

In the *Restore* mode no change of the IOL-Device parameters will be stored permanently on the IOL-Master. When the IOL-Device sets the DS_UPLOAD_FLAG in this mode, the device parameters will be restored by the IOL-Master.

The restore procedure can be blocked by the IO-Link Device via the *Device Access Locks* parameter when supported by the IO-Link Device (Index 0x000C, refer to vendor specific IO-Link Device documentation).

8.2.3 IQ Mode

The operating mode of Pin 2 (Channel B) of the respective IO-Link channel can be configured via this parameter.

Digital Output:

In this mode, the channel operates as digital output. The channel can be controlled by the *Digital Output Channel Control* (first two bytes of the output data) or by the *IO-Link Output Data* (first byte of each IO-Link device output data) of the cyclic process data. This depends on the *Digital Output Control* parameter in the general settings.

Digital Input:

In this mode, the channel operates as digital input. The channel state can be seen in the *Digital Input Channel* status of the cyclic process data.

AUX:

This option is exclusively applicable for Class A/B Mixmodules.

In this mode, Pin 2 of the IO-Link port acts as an auxiliary voltage output. The auxiliary voltage is fed by the U_{AUX} supply input. The auxiliary voltage output cannot be controlled.

8.2.4 Cycle Time

The IO-Link cycle time can be configured by this parameter.

The precondition for using *Cycle Time* is that you configure *Port Mode* to "IO-Link Manual".

As fast as possible:

The IO-Link port uses the max. supported IO-Link Device and Master update cycle time for the cyclic I/O data update between IO-Link Master and IO-Link Device.

1.6 ms, 3.2 ms, 4.8 ms, 8.0 ms, 20.8 ms, 40.0 ms, 80.0 ms, 120.0 ms:

The cycle time can be set manually to the provided options. This option can be used e.g. for IO-Link devices which are connected over inductive couplers. Inductive couplers are normally the bottleneck in the update cycle

time between IO-Link Master and IO-Link Device. In this case, please refer to the data sheet of the inductive coupler.

8.2.5 Vendor ID

The *Vendor ID* is needed for the validation of the IO-Link device and can be configured with this parameter.

Precondition for using the *Vendor ID* is that you configure *Port Mode* to "IO-Link Manual". *Validation and Backup* must be set to a type compatible V1.X device.

8.2.6 Device ID

The *Device ID* is needed for the validation of the IO-Link device and can be configured with this parameter.

Precondition for using the *Device ID* is that you configure *Port Mode* to "IO-Link Manual". *Validation and Backup* must be set to a type compatible V1.X device.

8.2.7 IOL Failsafe

The LioN-X devices support a failsafe function for the output data of the IO-Link channels. In case of an internal device error, the PLC is in STOP state and cannot provide valid process data, the connection is interrupted or the communication is lost: The output data of the IO-Link channels is controlled by the configured failsafe values.

Set Low:

If failsafe is active, all bits of the IO-Link output data are set to low ("0").

Set High:

If failsafe is active, all bits of the IO-Link output data are set to high ("1").

Hold Last:

If failsafe is active, all bits of the IO-Link output data are hold the last valid process data state ("0" or "1").

Replacement Value:

A replacement value can be set via the *IO-Link Failsafe* parameter object for every IO-Link device. If failsafe is active, these replacement values are transmitted to the IO-Link device. Take into account that in the case of an error the replacement values are sent instead of the output process data so that a configured *Swapping Mode* has influence on the byte order.

IO-Link Master Command:

If failsafe is active, an IO-Link-specific mechanism for valid/invalid output process data is used and the IO-Link device determines the behavior itself.

8.2.8 IOL Failsafe values

IOL failsafe values represent byte-wise 32 replacement values. If failsafe is active, these values are transmitted to the IO-Link Device.

8.2.9 Swapping Length

The byte order of IO-Link is big endian. For setting output data in the correct format, the parameters *Swapping Mode* and *Swapping Offset* support the user. There can be selected up to 16 words or up to 8 double words for converting the output data.

Raw IO-Link Data:

No byte swap

Data type DWORD:

Data byte order: Byte 1, Byte 2, Byte 3, Byte 4

Order after Swap: Byte 4, Byte 3, Byte 2, Byte 1

Data type WORD:

Data byte order: Byte 1, Byte 2

Order after Swap: Byte 2, Byte 1

8.2.10 Swapping Offset

The *Swapping Offset* describes the start point in the process data for using the configured *Swapping Length*. Both parameters are dependent on the configured input or output data size.

8.2.11 Swapping Count

The *Swapping Count* describes the number of bytes in the process data to be swapped using the configured *Swapping Length*.

8.2.12 Sensor Supply Disabled

The supply of sensors can be disabled when *Sensor Supply Disabled* is set. The IO-Link Master will disable the supply for the respective IO-Link port.

8.2.13 Suppress all Diagnosis

By default, the IO-Link Master generates all possible diagnostics and will send reports via cyclic and cyclic data. All diagnostics can be suppressed by setting *Suppress all Diagnosis*.

8.2.14 DO Surveillance Timeout

The digital output channels are monitored during runtime. The error states are detected and reported as a diagnosis. To avoid error states during the switching of output channels, the surveillance timeout can be configured as a delay with deactivated monitoring.

The delay time begins with a rising edge of the output control bit. After delay time has elapsed, the output is monitored and error states are reported by diagnosis. When the channel is permanently switched on or off, the typical filter value (not changeable) is 5 ms.

8.2.15 DO Failsafe

The LioN-X devices support a failsafe function for the channels used as digital outputs. In case of an internal device error, the PLC is in STOP state and cannot provide valid process data. The connection is interrupted or the communication is lost. The outputs are controlled according to the configured failsafe values.

Set Low:

If failsafe is active, the physical output pin of the channel is set to low ("0").

Set High:

If failsafe is active, the physical output pin of the channel is set to high ("1").

Hold Last:

If failsafe is active, the physical output pin of the channel holds the last valid process data state ("0" or "1").

8.2.16 DO Restart Mode

In case of a short circuit or overload at an output channel, a diagnosis is reported and the output is switched to "off".

If *DO Restart Mode* is disabled, the output channel is not automatically turned on again. It can be turned on after a logical reset of the process output data of the channel.

If *DO Restart Mode* for this channel is enabled, the output will automatically be turned on again after a fix time delay for checking if the overload or short circuit condition is still active. When it is active, the channel is switched off again.

8.2.17 DI Logic

The logical state of an input channel can be configured via these parameters. If a channel is set to "Normally Open", a low signal ("0") is transferred to the process input data (e.g. if a non-damped sensor has an open switching output).

If a channel is set to "Normally Close", a high signal ("0") is transferred to the process input data (e.g. if a non-damped sensor has a closed switching output).

The channel LED shows, independent of these settings, the physical input state of the port pin.

8.2.18 DI Filter

A filter time for every digital input channel can be configured by these parameters. When there is no need for a filter it can be disabled.

8.2.19 Error LED Disable

Every channel of the ports X1 .. X8 has an error LED. The error LED can be disabled by enabling the parameter *Error LED Disable*. When this parameter is enabled, the LED status will not be "ON" in the case of an error on the port.

8.2.20 Level LED Disable

Every channel of the ports X1 .. X8 has a level LED. The level LED can be disabled by enabling the parameter *Level LED Disable*. When this parameter is enabled, the LED status will not be "ON" in case the input or output are high.

8.2.21 Use Push Pull

If *Use Push Pull* is enabled, the output will be switched active to high or low. In low state, the output can be a current sink. The digital output is supplied by U_S with a maximum current of 0.5 A.

When this option is not enabled, it will use option "High-Side switch" and the current limit is set according to the parameter *Current limit*. This option is not available for the Channel B of any port.

8.2.22 Current Limit

With this parameter you can configure the current limitations for the digital outputs. You can choose between different current limit options.

In low state, the output has a high impedance. The digital output is supplied by U_L or U_{AUX} , depending on the device variant, and has a selectable current limit. This means that the output is turned off and the actuator channel error diagnosis is reported when this limit is exceeded. If you set the level to *2.0 A max.*, the current limitation is not active and the maximum output current is available.

8.2.23 DI Latch

i **Note:** Only applicable for firmware version 11.2 or higher in combination with the latest [device description file](#).

With this parameter enabled, a rising edge at digital input is held high in the input status data (latched) as this is acknowledged by the PLC.

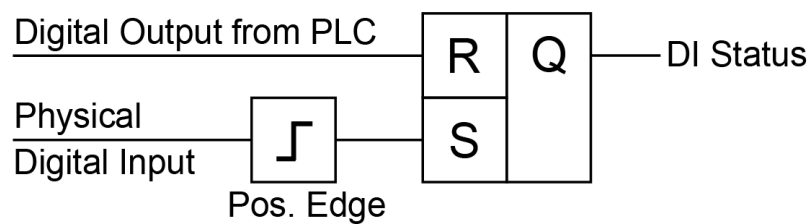


Figure 11: Input latch

R	S	Q
0	0	x (hold last)
0	1	1
1	0	0
1	1	0

Table 14: Truth table for input latch

When the input latch is enabled for a specific channel:

- ▶ The corresponding physical input of the channel is logically connected to the set input of a latch via an edge detector.
- ▶ The corresponding PLC output control bit (consuming data of I/O device) is logically connected to the reset input of the latch.
- ▶ The latch output is connected to the PLC input status data (producing data of the I/O device) of the corresponding channel.
- ▶ The latch will work according to the truth table above.
- ▶ It is not possible to directly read the physical input status data of that input channel, as the latch output is mapped to the PLC input status data.

The behavior in detail:

- ▶ A rising edge on the digital input will trigger the latch and set the latch output to '1'.
- ▶ The output will remain '1' until it is reset by the PLC program.
- ▶ A logical '1' on the corresponding PLC output control bit for that channel will reset the latch and set the latch output to '0', regardless of the set input or physical input state.
- ▶ If the input logic is inverted in the channel configuration, the inverted input logic is connected to the latch. Therefore, it will trigger on the falling edge regarding to a physical input signal.
- ▶ If the input is already high during enabling the latch, the latch will set to '1' (Q).

These DI Latch settings only work for channels that have been set to 'digital input mode'. It is recommended to always reset the latch before usage.

Default: Disabled

8.2.24 DI Extension



Note: Only applicable for firmware version 11.2 or higher in combination with the latest [device description file](#).

This parameter extends the duration of the digital input status after a state change at the physical input, when the input state change is faster than the extension time set.

The extension time will be applied on 'high' to 'low' and 'low' to 'high' input transitions. This setting only works for channels that have been set to 'digital input'.

Example:

The DI extension parameter is set to 16 ms, the physical input signal has low status => a high signal is detected for 8 ms.

In this case, the DI channel reports a high-status signal for 16 ms, regardless of other physical input signal transitions during this time.

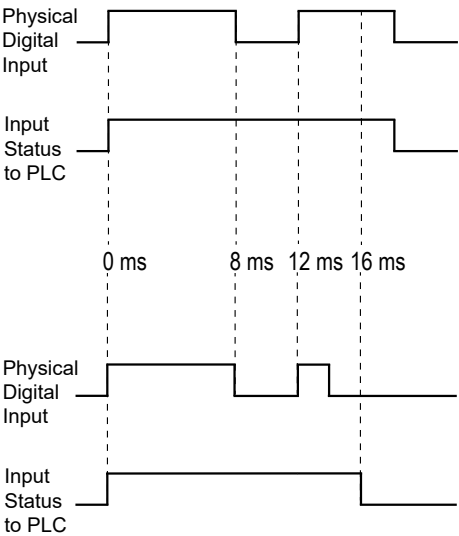


Figure 12: DI Extension

Available values: Off; 8 ms; 16 ms; 64 ms

Default: Off

9 Process data assignment

The LioN-X devices in general support process data communication in both directions. The consuming data in this context is defined as the process output data which controls physical outputs and IO-Link output data. The producing data in this context is defined as the process input data which contains the physical inputs, diagnostics and IO-Link input data with optional extended status and event data.

The following chapters describe the data images for the consuming and producing data direction which are assigned to the output and input assemblies.

9.1 Consuming data (output)

i **Attention:** Depending on the engineering tool used, the numbering of the registers is displayed as octal, decimal or hexadecimal.

Port No.	Pin	Register for DO	Register for IO-Link	Access
X1	4	Y0	RWw00 – RWw0F	RW ("Read/Write")
	2	Y1	–	RW
X2	4	Y2	RWw10 – RWw1F	RW
	2	Y3	–	RW
X3	4	Y4	RWw20 – RWw2F	RW
	2	Y5	–	RW
X4	4	Y6	RWw30 – RWw3F	RW
	2	Y7	–	RW
X5	4	Y8	RWw40 – RWw4F	RW
	2	Y9	–	RW
X6	4	YA	RWw50 – RWw5F	RW
	2	YB	–	RW
X7	4	YC	RWw60 – RWw6F	RW
	2	YD	–	RW
X8	4	YE	RWw70 – RWw7F	RW
	2	YF	–	RW

Register for DO = single bit

Register for IO-Link = WORD

9.2 Producing data (input)



Attention: Depending on the engineering tool used, the numbering of the registers is displayed as octal, decimal or hexadecimal.

Port No.	Pin	Register for DI	Register for IO-Link	Access
X1	4	X0	RWr00 – RWr0F	R ("Read Only")
	2	X1	–	R
X2	4	X2	RWr10 – RWr1F	R
	2	X3	–	R
X3	4	X4	RWr20 – RWr2F	R
	2	X5	–	R
X4	4	X6	RWr30 – RWr3F	R
	2	X7	–	R
X5	4	X8	RWr40 – RWr4F	R
	2	X9	–	R
X6	4	XA	RWr50 – RWr5F	R
	2	XB	–	R
X7	4	XC	RWr60 – RWr6F	R
	2	XD	–	R
X8	4	XE	RWr70 – RWr7F	R
	2	XF	–	R

Register for DI = single bit

Register for IO-Link = WORD

10 Diagnostics processing

Port No.	Register for Diagnosis	Description	Access
X1	X20	X1 IO-Link data valid	R ("Read only")
X2	X21	X2 IO-Link data valid	R
X3	X22	X3 IO-Link data valid	R
X4	X23	X4 IO-Link data valid	R
X5	X24	X5 IO-Link data valid	R
X6	X25	X6 IO-Link data valid	R
X7	X26	X7 IO-Link data valid	R
X8	X27	X8 IO-Link data valid	R

Sr. No.	Register for Diagnosis	Description	Access
1	X38	U _S supply present	R ("Read only")
2	X39	U _S supply Fault	R
3	X3A	U _L supply present	R
4	X3B	U _L supply Fault	R
5	X3C	Internal module error	R
6	X3D	Force mode diagnosis	R

10.1 Error of the system/sensor power supply

The voltage value for the incoming system/sensor power supply is also monitored globally. If the voltage drops below approx. 18 V, or exceeds approx. 30 V, an error diagnosis is generated. The IO-Link specification requires at least 20 V at the L+ (pin1) output supply of the I/O ports. At least 21 V of U_S supply voltage for the IO-Link Master are required to minimize the risk of internal voltage drops in the IO-Link Master.

The green U_S indicator is off.

The error diagnosis has no effect on the outputs.



Caution: It must definitely be ensured that the supply voltage, measured at the most remote participant is not below 21 V DC from the perspective of the system power supply.

10.2 Error of the auxiliary/actuator power supply

The voltage value for the incoming auxiliary/actuator power supply is also monitored globally. If *Report U_L/U_{Aux} Supply Voltage Fault* is enabled, an error message is generated when the voltage drops below approx. 18 V or exceeds approx. 30 V. The U_L/U_{Aux} indicator shows red.

If output channels are set to *High State* and *Report DO Fault without U_L/U_{Aux}* , additional error diagnostics, caused by the voltage failure, are generated on the channels.

If *Report U_L/U_{Aux} Supply Voltage Fault* is disabled, no U_L/U_{Aux} or channel diagnostics appear.

10.3 Overload/short circuit of the digital outputs

In case of an overload or a short circuit of an output channel, the following channel-specific diagnostics are generated in the producing data image.

Port No.	Pin	Register for Diagnosis	Description	Access
X1	4	X10	Short circuit X1 Channel A	R ("Read only")
	2	X11	Short circuit X1 Channel B	R
X2	4	X12	Short circuit X2 Channel A	R
	2	X13	Short circuit X2 Channel B	R
X3	4	X14	Short circuit X3 Channel A	R
	2	X15	Short circuit X3 Channel B	R
X4	4	X16	Short circuit X4 Channel A	R
	2	X17	Short circuit X4 Channel B	R
X5	4	X18	Short circuit X5 Channel A	R
	2	X19	Short circuit X5 Channel B	R
X6	4	X1A	Short circuit X6 Channel A	R
	2	X1B	Short circuit X6 Channel B	R
X7	4	X1C	Short circuit X7 Channel A	R
	2	X1D	Short circuit X7 Channel B	R
X8	4	X1E	Short circuit X8 Channel A	R
	2	X1F	Short circuit X8 Channel B	R

A channel error is determined by comparing the target value set of a controller to the physical value of an output channel.

When an output channel is activated (rising edge of the channel state), the channel errors are filtered for the period that is set by the "Surveillance-Timeout" parameter via the configuration of the device. The value of this parameter can range from 0 to 255 ms; the default setting is 80 ms.

The filter is used to avoid premature error messages during the activation of a capacitive load, the deactivation of an inductive load or during any other voltage peak when changing a status.

10.4 Overload/short circuit of the actuator power supply P24

For the following device variant, the Channel B outputs of X5 .. X8 are supplied by the U_{AUX} power:

► 0980 XSL 3913-121-007D-01F

In case of an overload or a short circuit of the actuator power supply P24 (Class B) on the ports (X5 .. X8), the following channel-specific diagnostics in the producing data image are generated.

Port No.	Register for Diagnosis	Description	Access
X1	X30	reserved	R ("Read only")
X2	X31	reserved	R
X3	X32	reserved	R
X4	X33	reserved	R
X5	X34	X5 actuator supply P24 short circuit	R
X6	X35	X6 actuator supply P24 short circuit	R
X7	X36	X7 actuator supply P24 short circuit	R
X8	X37	X8 actuator supply P24 short circuit	R

10.5 Overload/short-circuit of the I/O port sensor supply outputs

In case of an overload or a short circuit between pin 1 and pin 3 on the ports (X1 .. X8), the following channel-specific diagnostics in the producing data image are generated.

Port No.	Register for Diagnosis	Description	Access
X1	X28	X1 sensor short circuit	R ("Read only")
X2	X29	X2 sensor short circuit	R
X3	X2A	X3 sensor short circuit	R
X4	X2B	X4 sensor short circuit	R
X5	X2C	X5 sensor short circuit	R
X6	X2D	X6 sensor short circuit	R
X7	X2E	X7 sensor short circuit	R
X8	X2F	X8 sensor short circuit	R

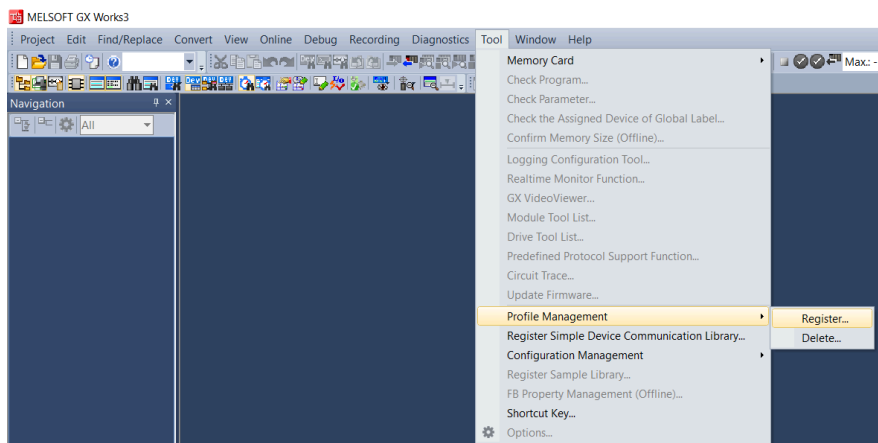
11 Configuration and operation with GxWorks3®

The configuration and start-up of LioN-X devices described in this chapter refers to the Mitsubishi Engineering Tool GxWorks®, V2. If you are using an engineering tool from another provider, please consider the related documentation.

11.1 Integration of a CSP+ file

Perform the following work steps to integrate a CSP+ file in GxWorks3®:

1. Open GxWorks3® and navigate to **Tool > Profile Management > Register**.

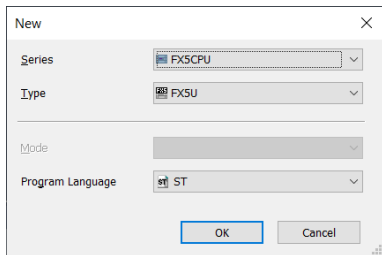


2. Select `0x4DF_0980 XXX_1.0_en.CSPP.zip` and the CSP+ file will be registered.

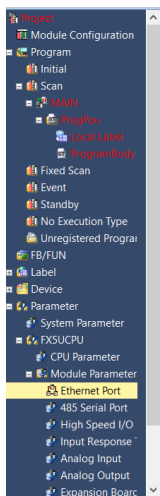
11.2 Network parameters

Perform the following work steps to change the Network parameters:

1. Open GxWorks3® and create a new project.
2. Select the series and the type of the used PLC.

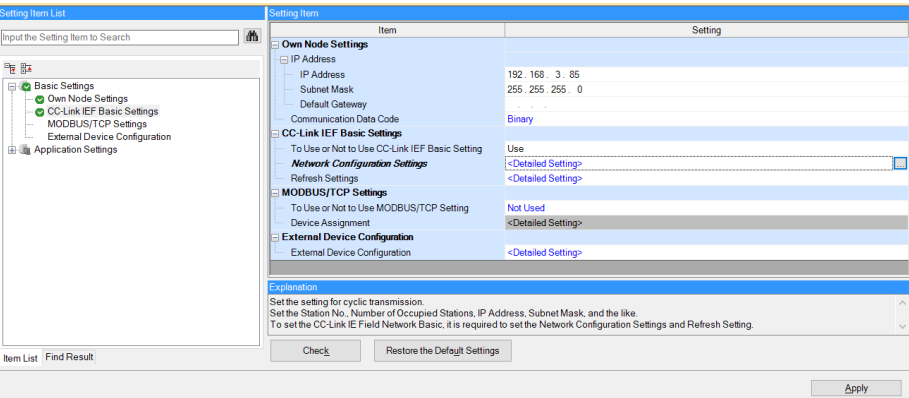


3. To open the setting window, navigate to **Project > Parameter > "the selected CPU module" > Module Parameter**



In the appearing window, the CC-Link IE Field Basic Master station can be configured.

4. Navigate to *Own Node Settings* to configure the PLC or Master station.



5. Under **CC-Link IEF Basic settings > To Use or Not to Use CC-Link IEF Basic Setting** select "Use".

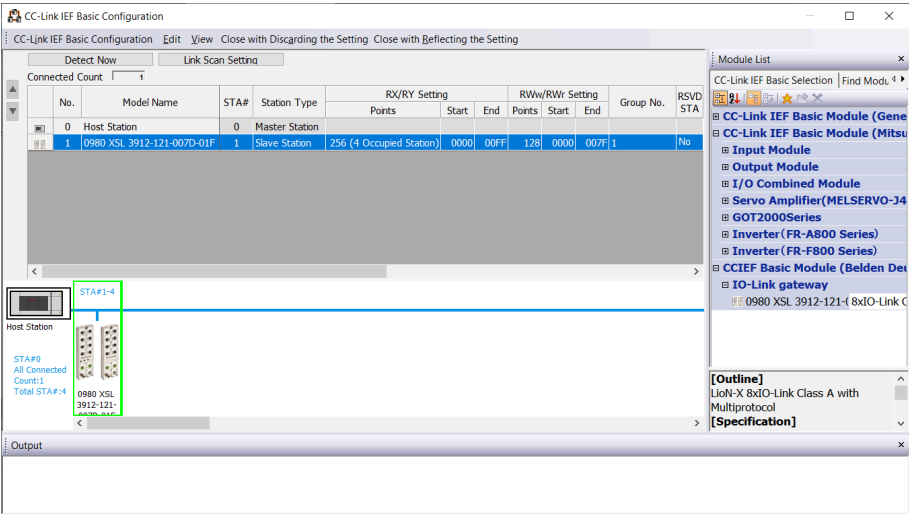
- ▶ The option *Network Configuration Settings* allows you to configure a CC-Link IE Field Basic Master, connected stations, a Network, parameters and many more.
- ▶ Settings under *Refresh Settings* are necessary for the automatic data transfer between Link side and CPU side:

Setting Item									
Link Side					CPU Side				
Device Name	Points	Start	End		Target	Device Name	Points	Start	End
RX	256	00000	000FF	↔	Specify Devi	X	256	100	477
RY	256	00000	000FF	↔	Specify Devi	Y	256	100	477
Rv/r	128	00000	0007F	↔	Specify Devi	R	128	100	227
Rv/w	128	00000	0007F	↔	Specify Devi	W	128	00100	0017F

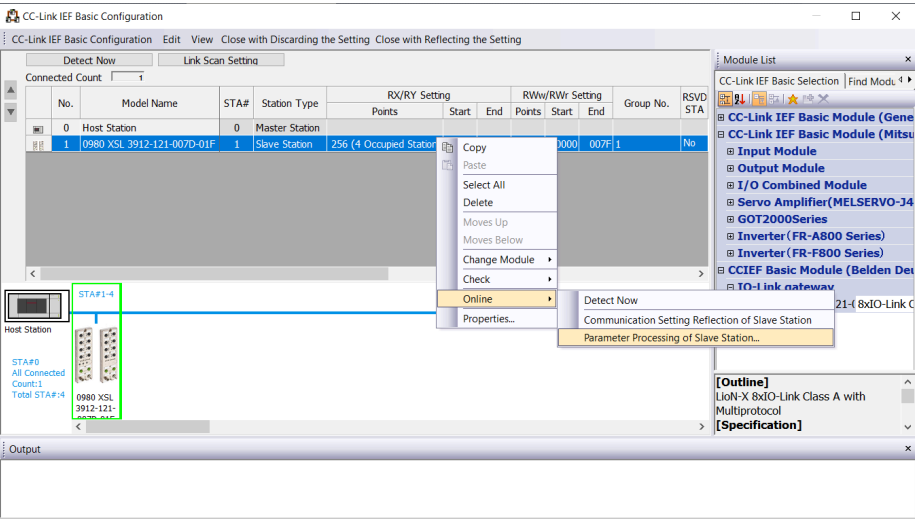
11.3 Parameter processing

Under *Network Configuration Settings*, individual stations can be configured. Perform the following work steps to configure a LioN-X device:

1. Select the LioN-X device from the *Module List*. Alternatively, click the button **Detect Now** for automatic detection of devices.



2. Right-click on "Slave Station" and select **Online > Parameter Processing of Slave Station...**



3. In the next window under *Method selection*, choose “Parameter read” or “Parameter write”, depending on which method you want to configure for the LionX device. For details on the different parameters please refer to chapter [Configuration CC-Link IE Field Basic](#) on page 50.

Parameter Processing of Slave Station

Target Module: 0980 XSL 3912-121-007D-01F
Station No.: 1

Method selection: Parameter read Parameter read Parameter write Read parameter from target module.

Parameter Information

Checked parameters are the targets of selected processes.

Select All Cancel All Selections

Name	Initial Value	Unit	Read Value	Unit	Write Value	Unit	Setting Range	Description
General Settings								
<input checked="" type="checkbox"/> GeneralSettings								General Settings
<input type="checkbox"/> Suppress Uaux Diagnosis Mo...	DEVOL_UL...							
<input type="checkbox"/> Suppress ActuatorDiagnosis ...	0						0 to 1	
<input type="checkbox"/> Suppress US Diagnosis	0						0 to 1	
<input type="checkbox"/> Reserved	0						0 to 1	
<input type="checkbox"/> Output Auto Restart	1						0 to 1	
<input type="checkbox"/> Web Interface Lock	0						0 to 1	
<input type="checkbox"/> Forcing Lock	1						0 to 1	
<input type="checkbox"/> External Configuration Lock	1						0 to 1	

Clear All "Read Value" Clear All "Write Value"

Process Option

There is no option in the selected

- Process is executed to a module of "Target Module Information".
- The device is accessed by using "the current connection destination". Please check if there is any problem with the connection destination.
- For information on items not displayed on the screen, please refer to the Operating Manual.

Import... Export... Execute Close

4. After having adjusted the parameters, click on **Communication Setting Reflection of Slave Station** to apply the changes to the respective module.

12 IIoT functionality

The LioN-X variants offer a number of new interfaces and functions for the optimal integration into existing or future IIoT (Industrial Internet of Things) networks. The devices continue to work as field bus devices which communicate with and are controlled by a PLC (Programmable Logic Controller).

In addition, the devices offer common IIoT interfaces, which enable new communication channels besides the PLC. The communication is performed via IIoT-relevant protocols MQTT and OPC UA. With the help of these interfaces not only all information in a LioN-X device can be read. They also enable its configuration and control, if the user wishes. All interfaces can be configured extensively and offer read-only functionality.

All LioN-X variants provide user administration, which is also applicable for accessing and configuring the IIoT protocols. This allows you to manage all modification options for the device settings via personalized user authorizations.

All IIoT protocols can be used and configured independently of the field bus. It is also possible to use the devices completely without the help of a PLC and control them via IIoT protocols.



Attention: When using the IIoT functionality, a protected local network environment without direct access to the Internet is recommended.



Attention: Only activate one of the IIoT protocols at a time. Exclusively use MQTT **or** OPC UA.

12.1 MQTT

MQTT functions are **only** applicable for the following LioN-X variants:

- ▶ 0980 XSL 3912-121-007D-00F
- ▶ 0980 XSL 3912-121-007D-01F
- ▶ 0980 XSL 3912-121-027D-01F
- ▶ 0980 XSL 3913-121-007D-01F
- ▶ 0980 XSL 3913-121-027D-01F

The MQTT (Message Queuing Telemetry Transport) protocol is an open network protocol for machine-to-machine communication, which provides the transmission of telemetric data messages between devices. The integrated MQTT client allows the device to publish a specific set of information to an MQTT broker.

The publishing of messages can either occur periodically or be triggered manually.



Attention: When using MQTT, the OPC UA protocol must be disabled.

12.1.1 MQTT configuration

In **delivery state**, MQTT functions are **disabled**. The MQTT client can be configured either using the Web interface or directly via a JSON object sent in an HTTP/HTTPS request. For more information see chapter [MQTT configuration - Quick start guide](#) on page 100.

The configuration URL is:

```
http://[ip-address]/w/config/mqtt.json
```

The configuration can also read back as a JSON file:

```
http://[ip-address]/r/config/mqtt.json
```

The configuration is a JSON object. Each JSON member is a configuration element. The object must not contain all elements. Only the provided elements will be changed. The configuration changes apply only after a device restart.

The following configuration elements are available (default values in bold):

Element	Data type	Description	Example data
mqtt-enable	boolean	Master switch for the MQTT client.	true / false
broker	string	IP address of the MQTT Broker	"192.168.1.1"
login	string	Username for MQTT Broker	"admin" (Default: null)
password	string	Password for MQTT Broker	"private" (Default: null)
port	number	Broker port	1883
base-topic	string	Base topic	"iomodule_[mac]" (Default: "lionx")
will-enable	boolean	If true, the device provides a last will message to the broker	true / false
will-topic	string	The topic for the last will message.	(Default: null)
auto-publish	boolean	If true, all enabled domains will be published automatically in the specified interval.	true / false
publish-interval	number	The publish interval in ms if auto-publish is enabled. Minimum is 250 ms.	2000
publish-identity	boolean	If true, all identity domain data will be published	true / false
publish-config	boolean	If true, all config domain data will be published	true / false
publish-status	boolean	If true, all status domain data will be published	true / false
publish-process	boolean	If true, all process domain data will be published	true / false
publish-devices	boolean	If true, all IO-Link Device domain data will be published	true / false
commands-allowed	boolean	Master switch for MQTT commands. If false, the device will not subscribe to any command topic, even if specific command topics are activated below.	true / false
force-allowed	boolean	If true, the device accepts force commands via MQTT.	true / false
reset-allowed	boolean	If true, the device accepts restart and factory reset commands via MQTT.	true / false
config-allowed	boolean	If true, the device accepts configuration changes via MQTT.	true / false

Element	Data type	Description	Example data
qos	number	Selects the "Quality of Service" status for all published messages.	0 = At most once 1 = At least once 2 = Exactly once

Table 15: MQTT configuration

MQTT response:

The resulting response is a JSON object with a "status" field. Status should be "0" if no error occurred and "-1" if there is an error.

In case of an error, the response contains an error array.

The error array contains an error object for each error occurred. The object consists of a field "Element" which names the config element which caused the error, and a field "Message" for the error message.

- ▶ A malformed JSON object produces an error.
- ▶ Not existing parameters produce an error.
- ▶ Parameters with a wrong data type produce an error.

It is not allowed to write all available parameters at once. You may write only one or a limited number of parameters.

Examples:

```
{ "status": -1, "error": [{ "Element": "publish-interval", "Message": "Integer expected" }] }
```

```
{ "status": 0 }
```

```
{ "status": -1, "error": [{ "Element": "root", "Message": "Not a JSON object" }] }
```

For more information see chapter [MQTT topics](#) on page 88.

12.1.2 MQTT topics

MQTT mainly relates to topics. All messages are attached to a topic which adds context to the message itself. Topics may consist of any string and they are allowed to contain slashes (/) as well as wildcard symbols (* , #).

12.1.2.1 Base topic

For all LioN-X variants there is a configurable Base topic which is the prefix for all topics. The Base topic can be chosen freely by the user. The Base topic can also contain selected variables as shown in [Table 16: Base topic variables](#) on page 88.

Variables in the Base topic have to be written in brackets ("["]"). The following variables are possible:

Variable	Description
mac	The MAC address of the device
name	The name of the device
order	The ordering number of the device
serial	The serial number of the device

Table 16: Base topic variables

Example:

The Base topic "io_[mac]" translates to "io_A3B6F3F0F2F1".

All data is organized in domains. The domain name is the first level in the topic after the Base topic. Note the following notation:

Base-Topic/domain/....

There are the following domains:

Domain name	Definition	Example content
identity	All fixed data which is defined by the used hardware and which cannot be changed by configuration or at runtime.	Device name, ordering number, MAC address, port types, port capabilities and more.
config	Configuration data which is commonly loaded once at startup, mostly by a PLC.	IP address, port modes, input logic, failsafe values and more.
status	All (non-process) data which changes quite often in normal operation.	Bus state, diagnostic information, IO-Link Device status and data.
process	All process data which is produced and consumed by the device itself or by attached devices.	Digital inputs, digital outputs, cyclic IO-Link data.
iold	IO-Link Device parameters according to the IO-Link specification.	Vendor name, product name, serial number, hardware revision, software revision and more.

Table 17: Data domains

There is often one topic used for all gateway related information and topics for each port. All identity topics are published just once at start-up, because this information should never change. All other topics are published either in a fixed interval or just triggered manually, according to the configuration.

Topic	Content examples	Total publish count	Publish interval
[base-topic]/identity/gateway	Name, ordering number, MAC, vendor, I&M etc.	1	Startup
[base-topic]/identity/port/n	Port name, port type	8	Startup
[base-topic]/config/gateway	Configuration parameters, ip address etc.	1	Interval
[base-topic]/config/port/n	Port mode, data storage, mapping, direction	8	Interval
[base-topic]/status/gateway	Bus state, device diagnosis, master events	1	Interval
[base-topic]/status/port/n	Port or channel diagnosis, IO-Link state, IO-Link Device events	8	Interval
[base-topic]/process/gateway	All Digital IN/OUT	1	Interval
[base-topic]/process/port/n	Digital IN/OUT per port, IOL-data, pdValid	8	Interval
[base-topic]/iold/port/n	IO-Link Device parameter	8	Interval

Table 18: Data model

An MQTT client which wants to subscribe to one or more of these topics can also use wildcards.

Full topic	Description
[base-topic]/identity/gateway	Receive only indentity objects for the gateway
[base-topic]/identity/#	Receive all data related to the identity domain
[base-topic]/status/port/5	Receive only status information for port number 5
[base-topic]/+/port/2	Receive information of all domains for port number 2
[base-topic]/process/port/#	Receive only process data for all ports
[base-topic]/config/#	Receive config data for the gateway and all ports.

Table 19: Use case examples

12.1.2.2 Publish topic

Overview of all publish JSON data for the defined topics:

Key	Data type
product_name	json_string
ordering_number	json_string
device_type	json_string
serial_number	json_string
mac_address	json_string
production_date	json_string
fw_name	json_string
fw_date	json_string
fw_version	json_string
hw_version	json_string
vendor_name	json_string
vendor_address	json_string
vendor_phone	json_string
vendor_email	json_string
vendor_tech_support	json_string
vendor_url	json_string
vendor_id	json_integer
device_id	json_integer

Table 20: Identity/gateway

Key	Data type	Range	Default value	Remarks
fieldbus_protocol	json_string	PROFINET, EtherNet/IP, EtherCAT®		
ip_address	json_string		192.168.1.1	
subnet_mask	json_string		255.255.255.0	
report_alarms	json_boolean		0.0.0.0	
report_ul_alarm	json_boolean	true / false	true	
report_do_fault_without_ul	json_boolean	true / false	false	
force_mode_lock	json_boolean	true / false	false	
web_interface_lock	json_boolean	true / false	false	
do_auto_restart	json_boolean	true / false	true	
fast_startup	json_boolean	true / false	false	PROFINET and EIP only

Table 21: Config/gateway

Key	Data type	Range	Default value	Remarks
protocol	json_string	wait_for_io_system wait_for_io_Connection failsafe connected error		
ethernet_port1	json_string	100_mbit/s_full 100_mbit/s 10_mbit/s_full 100_mbit/s		
ethernet_port2	json_string	100_mbit/s_full 100_mbit/s 10_mbit/s_full 100_mbit/s		
module_restarts	json_integer	0 .. 4294967295		
channel_diagnosis	json_boolean	true / false		
failsafe_active	json_boolean	true / false		
system_voltage_fault	json_boolean	true / false		
actuator_voltage_fault	json_boolean	true / false		
internal_module_error	json_boolean	true / false		
simulation_active_diag	json_boolean	true / false		
us_voltage	json_integer	0 .. 32		in Volts
ul_voltage	json_integer	0 .. 32		in Volts
forcemode_enabled	json_boolean	true / false		

Table 22: Status/gateway

Key	Data type	Range	Default value	Remarks
Input_data	json_integer[]			
output_data	json_integer[]			

Table 23: Process/gateway

Key	Data type	Range	Default value	Remarks
port	json_integer	1 .. 8		
type	json_string	digital_universal digital_input digital_Output io_link		
max_output_power_cha	json_string	2.0_mA 0.5_mA		
max_output_power_chb	json_string	2.0_mA 0.5_mA		
channel_cha	json_string	input/output input output io_link aux		
channel_chb	json_string	input/output input output io_link aux		

Table 24: Identity/port/1 .. 8

Key	Data type	Range	Default value	Remarks
port	json_integer	1 .. 8		
direction_cha	json_string	input/output input output		
restart_mode_cha	json_string	Manual Auto		
restart_mode_chb	json_string	Manual Auto		
input_polarity_cha	json_string	NO NC		
input_polarity_chb	json_string	NO NC		
input_filter_cha	json_integer			ms
input_filter_chb	json_integer			ms
do_auto_restart_cha	json_boolean	true / false		
do_auto_restart_chb	json_boolean	true / false		

Table 25: Config/port/1 .. 8

Key	Data type	Range	Default value	Remarks
port	json_integer	1 .. 8		
physical_state_cha	json_integer	0 .. 1		
physical_state_chb	json_integer	0 .. 1		
actuator_short_circuit_cha	json_boolean	true / false		
actuator_short_circuit_chb	json_boolean	true / false		
sensor_short_circuit	json_boolean	true / false		
current_cha	json_integer			mA
current_chb	json_integer			mA
current_pin1	json_integer			mA

Table 26: Status/port/1 .. 8

12.1.2.3 Command topic (MQTT Subscribe)

The main purpose of MQTT is to publish data from the device to a broker. This data can then be received by any subscriber who is interested in this data. But also the other way round is possible. The device can subscribe to a topic on the broker and is then able to receive data. This data can contain configuration or forcing data. This allows the user to fully control a device via MQTT only, without using other ways of communication like Web or REST.

If the configuration allows commands in general, the device subscribes to special Command topics on which it can receive commands from other MQTT clients. The Command topic is based upon the Base topic. It always has the following form:

```
[base-topic]/command
```

After the Command topic, there are fixed topics for different writeable objects. The data format of the MQTT payload is always JSON. It is possible to set only a subset of the possible objects and fields.

[...]/forcing

Use the Command topic [base-topic]/command/forcing for *Force object* data. The *Force object* can contain any of the following properties:

Property	Data type	Example values	Remarks
forcemode	boolean	true / false	Forcing Authority: on/off
digital	array (Table 28: Force object: Digital on page 97)		
iol	array (Table 29: Force object: IOL (IO-Link devices only) on page 97)		

Table 27: Force object properties

For the *Force object* properties `digital` and `iol`, there are several value specifications arrayed:

Property	Data type	Example values	Remarks
port	integer	1, 2, 5	
channel	string	"a", "b"	
force_dir	string	"out", "in", "clear"	
force_value	integer	0, 1	

Table 28: Force object: Digital

Property	Data type	Example values	Remarks
port	integer	0, 1, 5	
output	array[integer]	[55, 88, 120]	
input	array[integer]		Input-Simulation

Table 29: Force object: IOL (IO-Link devices only)

[...]/config

Use the Command topic `[base-topic]/command/config` for *Config object* data. The *Config object* can contain any of the following properties:

Property	Data type	Example values	Remarks
portmode	array (Table 31: Config object: Portmode on page 98)		
ip_address	string	"192.168.1.5"	
subnet_mask	string	"255.255.255.0"	
gateway	string	"192.168.1.100"	

Table 30: Config object properties

For the *Config object* property `portmode`, there are several value specifications arrayed:

Property	Data type	Example values	Remarks
port	integer	2	
channelA*	string	"dio", "di", "do", "iol", "off"	
channelB*	string	"dio", "di", "do", "iol", "off", "aux"	
inlogicA	string	"no", "nc"	
inlogicB	string	"no", "nc"	
filterA	integer	3	input filter in ms
filterB	integer	3	input filter in ms
autorestartA	boolean		
autorestartB	boolean		
iolValidation	integer	0 = NoCheck 1 = Type 1.0 2 = Type 1.1 3 = Type 1.1 BR 4 = Type 1.1 RES	
iolDeviceID	integer		for validation
iolVendorID	integer		for validation

Table 31: Config object: Portmode

*channelA = Pin 4, channelB = Pin 2

[...]/reset

Use the Command topic `[base-topic]/command/reset` for *Reset object* data about restart and factory reset issues. The *Reset object* can contain any of the following properties:

Property	Data type	Example values	Remarks
factory_reset	boolean	true / false	
system_reset	boolean	true / false	


Table 32: Reset object properties

[...]/publish

Use the Command topic `[base-topic]/command/publish` for *Publish object* data.

Trigger publish of all topics manually (can be used when auto publish is off or long interval is set).

12.1.3 MQTT configuration - Quick start guide



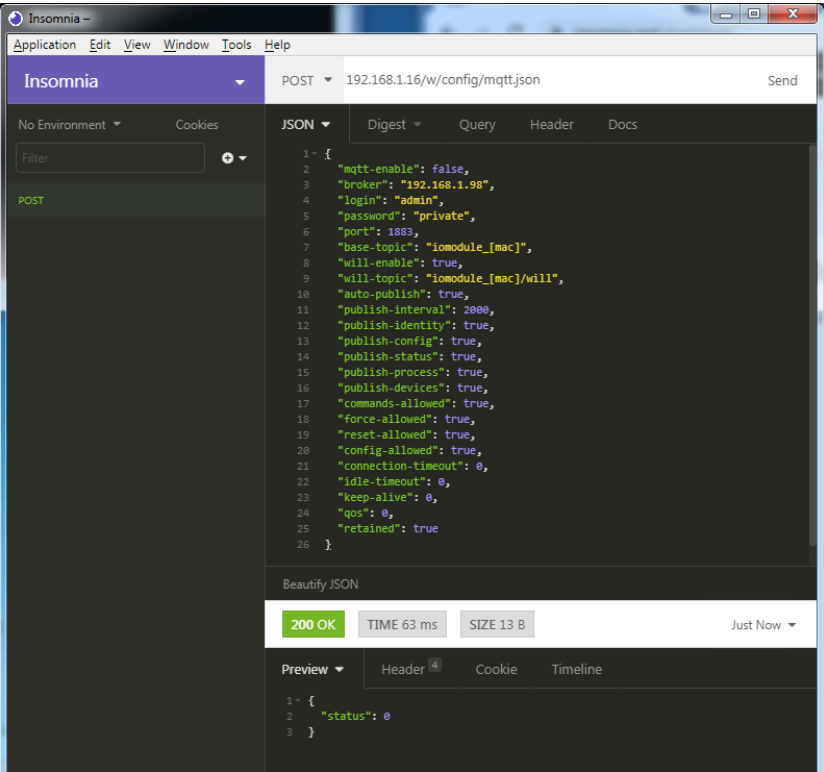
Attention: Lumberg Automation™ is not responsible for any content of the referenced Web pages and provides no warranty for any functionality of the named third party software.

12.1.3.1 MQTT configuration via JSON

1. Depending on your application case, download and install *Insomnia* or a comparable application: <https://insomnia.rest/download/>

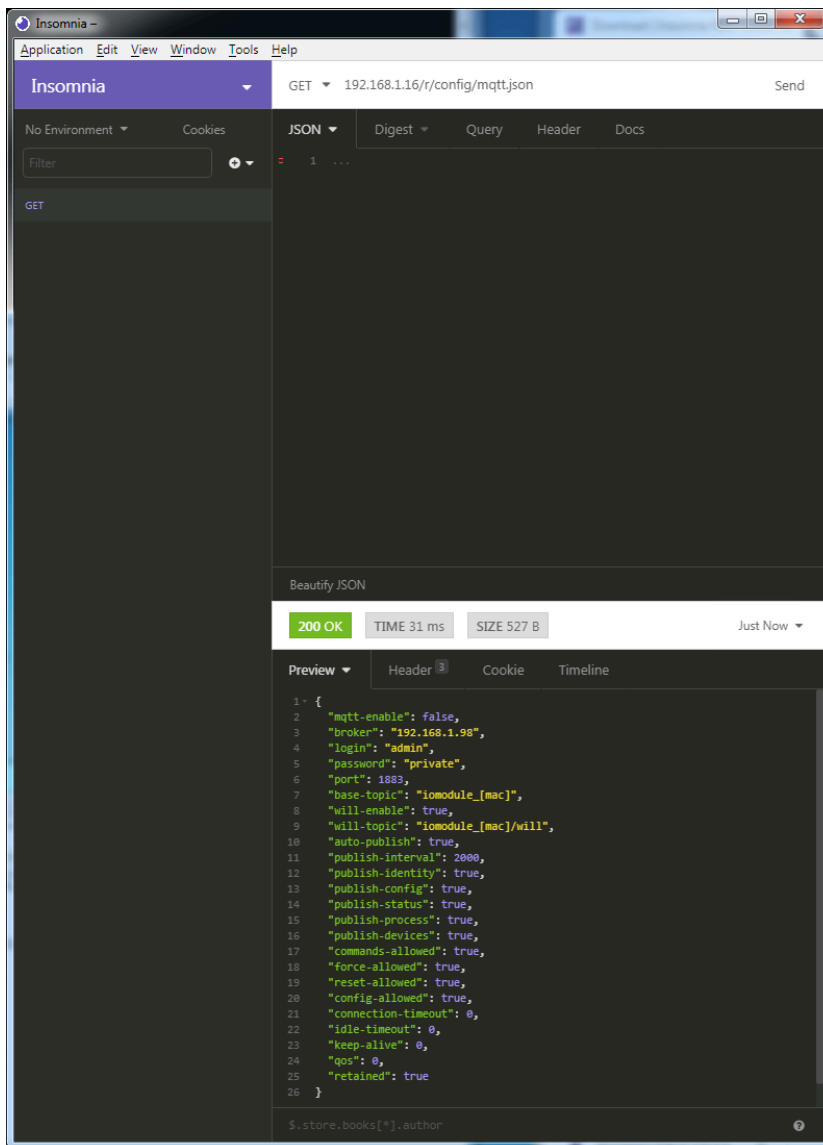
2. Configure MQTT:

POST: [IP-address]/w/config/mqtt.json



3. Read MQTT:

GET: [IP-address]/r/config/mqtt.json



12.2 OPC UA

OPC UA functions are **only** applicable for the following LioN-X variants:

- ▶ 0980 XSL 3912-121-007D-00F
- ▶ 0980 XSL 3912-121-007D-01F
- ▶ 0980 XSL 3912-121-027D-01F
- ▶ 0980 XSL 3913-121-007D-01F
- ▶ 0980 XSL 3913-121-027D-01F

OPC Unified Architecture (OPC UA) is a platform-independent standard with a service-oriented architecture for communication in and with industrial automation systems.

The OPC UA standard is based on the client-server principle and lets machines and devices, regardless of any preferred field bus, communicate horizontally among each other as well as vertically to the ERP system or the cloud. LioN-X provides an OPC UA server on field device level, with which an OPC UA client can connect for information exchange secure in transmission.

For OPC UA, we comply (apart from the exceptions listed [below](#)) with the IO-Link Companion Specification, which can be downloaded from catalog.belden.com or directly from io-link.com.



Attention: When using OPC UA, the MQTT protocol must be disabled.

Feature	Support
Managing IODDs (chapter 6.1.6 in the specification)	Not supported
Mapping IODD information to OPC UA ObjectTypes (chapter 6.3 in the specification)	Not supported
IOLinkIODDDeviceType (chapters 7.2 ff. in the specification)	Not supported
ObjectTypes generated based on IODDs (chapters 7.3 ff. in the specification)	Not supported
Creation of Instances based on ObjectTypes generated out of IODDs (chapter 7.4 in the specification)	Not supported
IODDManagement Object (chapter 8.2 in the specification)	Not supported
RemoveIODD Method (chapter 8.3 in the specification)	Not supported

Table 33: Non-supported OPC UA features according to the IO-Link Companion Specification

12.2.1 OPC UA configuration

In **delivery state**, OPC UA functions are **disabled**. The OPC UA Server can be configured either using the Web interface or directly via a JSON Object sent in an HTTP/HTTPS request. For more information see [OPC UA configuration - Quick start guide](#) on page 106.

The configuration URL is:

`http://[ip-address]/w/config/opcua.json`

The configuration can also read back as a JSON file:

`http://[ip-address]/r/config/opcua.json`

The configuration is a JSON object. Each JSON member is a configuration element. The object must not contain all elements. Only the provided elements will be changed. All configuration changed applies only after a device restart.

There are the following configuration elements (default values in bold):

Element	Data type	Description	Example data
port	integer	Server port for the OPC UA server.	0, 4840 , 0xFFFF
opcua-enable	boolean	Master switch for the OPC UA server.	true / false
anon-allowed	boolean	If true, anonymous login is allowed.	true / false
commands-allowed	boolean	Master switch for OPC UA commands. If false there will be no writeable OPC UA objects.	true / false
force-allowed	boolean	If true, the device accepts force commands via OPC UA.	true / false
reset-allowed	boolean	If true, the device accepts restart and factory reset commands via OPC UA.	true / false
config-allowed	boolean	If true, the device accepts configuration changes via OPC UA.	true / false

Table 34: OPC UA Configuration

All configuration elements are optional and do not need a specific order. Not every element is required to be sent. This means that only configuration changes will be taken over.

Optional: The configuration parameters of OPC UA can be set directly via the Web interface. It is possible to download the Web interface for sharing with other devices.

Response:

The resulting response is a JSON object with a status field. Status should be "0" if no error occurred and "-1" if there is an error.

In case of an error, the response contains an error array.

The error array contains an error object for each error occurred. The object consists of a field "Element" which names the config element which caused the error, and a field "Message" for the error message.

Examples:

```
{ "status": -1, "error": [ { "Element": "opcua-enable", "Message": "Boolean  
expected" } ] }  
  
{ "status": 0 }  
  
{ "status": -1, "error": [ { "Element": "root", "Message": "Not a JSON  
object" } ] }
```

12.2.2 OPC UA address space

OPC UA provides different services on the LioN-X devices with which a client can navigate through the hierarchy of the address space and read or write variables. In addition, the client can monitor up to 10 attributes from the address space for value changes.

A connection to an OPC UA server is established via the endpoint URL:

```
opc.tcp://[ip-address]:[port]
```

Various device data such as MAC address, device settings, diagnostics or status information can be read via *Identity objects*, *Config objects*, *Status objects* and *Process objects*.

Command objects can be read and written. This makes it possible, for example, to transfer new network parameters to the device, to use Force Mode or to reset the entire device to its factory settings.

The following figures illustrate the OPC UA address space of the LioN-X devices. The objects and information displayed depend on the device variant used.

12.2.3 OPC UA configuration - Quick start guide

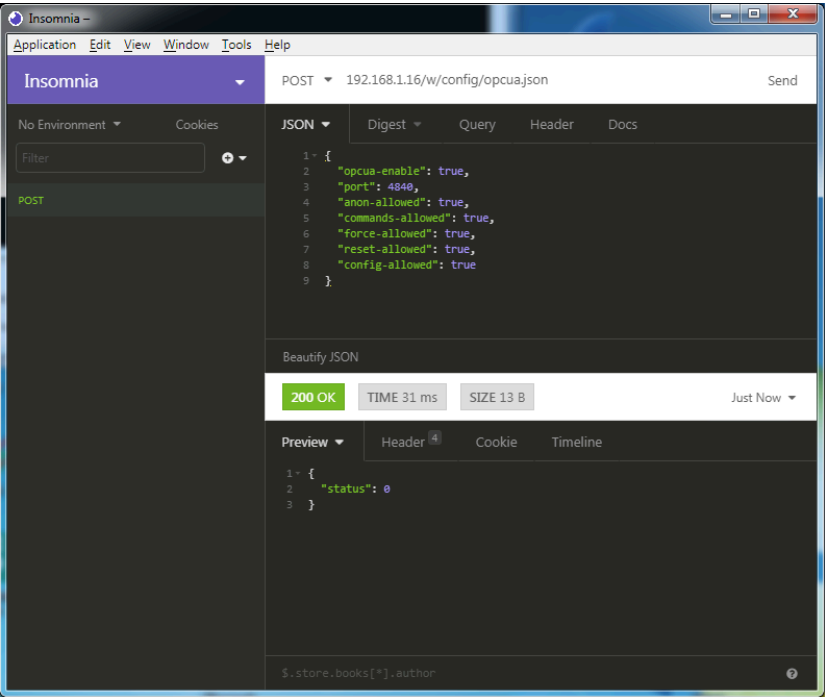
i **Attention:** Lumberg Automation™ is not responsible for any content of the referenced Web pages and provides no warranty for any functionality of the named third party software.

12.2.3.1 OPC UA configuration via JSON

1. Depending on your application case, download and install *Insomnia* or a comparable application: <https://insomnia.rest/download/>

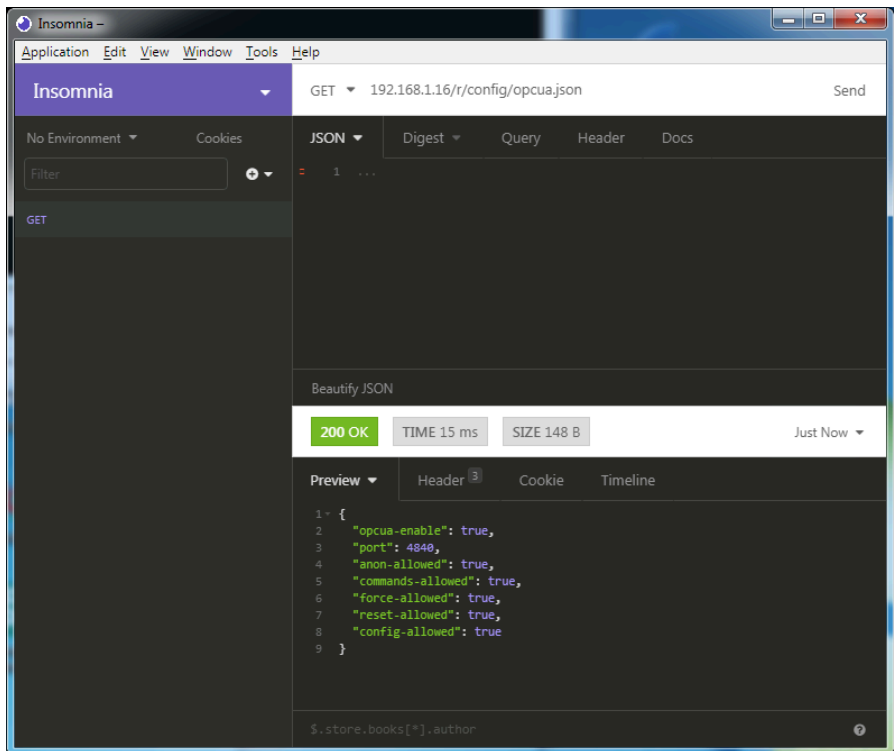
2. Configure OPC UA:

POST: [IP-address]/w/config/opcua.json



3. Read OPC UA:

GET: [IP-address]/r/config/opcua.json



12.3 REST API

The Representational State Transfer – Application Programming Interface (REST API) is a programmable interface which uses HTTP/HTTPS requests to GET and POST data. This enables the access to detailed device information.

For all LioN-X variants, the REST API can be used to read the device status. For the LioN-X multiprotocol variants, the REST API can also be used to write configuration and forcing data.

There are two different REST API standards you can use for the requests:

- 1. A standardized REST API that has been specified by the IO-Link Community and is described separately:

JSON_Integration_10222_V100_Mar20.pdf

Please download the file from catalog.belden.com or directly from io-link.com.



Attention: Consider the following table to get an overview of the supported features of the IO-Link specification:

Feature		Supported
Gateway	GET /identification	Yes
	GET /capabilities	Yes
	GET /configuration	Yes
	POST /configuration	Yes
	POST /reset	Yes
	POST /reboot	Yes
	GET /events	Yes
Master	GET /masters	Yes
	GET /capabilities	Yes
	GET /identification	Yes
	POST /identification	Yes

Feature		Supported
Port	GET /ports	Yes
	GET /capabilities	Yes
	GET /status	Yes
	GET /configuration	Yes
	POST /configuration	Yes
	GET /datastorage	Yes
	POST /datastorage	Yes
Devices	GET /devices	Yes
	GET /capabilities	Yes
	GET /identification	Yes
	POST /identification	Yes
	GET /processdata/value	Yes
	GET /processdata/getdata/value	Yes
	GET /processdata/setdata/value	Yes
	POST /processdata/value	Yes
	GET /parameters	Not supported
	GET /parameters/{index}/subindices	Not supported
	GET /parameters/{parameterName}/subindices	Not supported
	GET /parameters/{index}/value	Not supported
	GET /parameters/{index}/subindices/{subindex}/value	Not supported
	GET /parameters/{parameterName}/value	Not supported
	GET /parameters/{parameterName}/subindices/{subParameterName}/value	Not supported
	POST /parameters/{index}/value	Not supported
	POST /parameters/{parameterName}/value	Not supported
	POST /parameters/{index}/subindices/{subindex}/value	Not supported
	POST /parameters/{parameterName}/subindices/{subParameterName}/value	Not supported
	POST /blockparametrization	Yes
	GET /events	Yes

Feature		Supported
IODD	GET /iodds	Not supported
	POST /iodds/file	Not supported
	DELETE /iodds	Not supported
	GET /iodds/file	Not supported

Table 35: Support of REST API features according to the IO-Link specification

2. A customized Belden REST API that is described in the following chapters.

12.3.1 Standard device information

Request method:	http GET
Request URL:	<ip>/info.json
Parameters	n.a.
Response format	JSON

The goal of the "Standard device information" request is to get a complete snapshot of the current device status. The format is JSON. For IO-Link devices, all ports with connected IO-Link device information are included.

12.3.2 Structure

Name	Data type	Description	Example
name	string	Device name	"0980 XSL 3912-121-007D-00F"
order-id	string	Ordering number	"935 700 001"
fw-version	string	Firmware version	"V.1.1.0.0 - 01.01.2021"
hw-version	string	Hardware version	"V.1.00"
mac	string	MAC address of the device	"3C B9 A6 F3 F6 05"
bus	number	0 = No connection 1 = Connection with PLC	1
failsafe	number	0 = Normal operation 1 = Outputs are in failsafe	0
ip	string	IP address of the device	
snMask	string	Subnet Mask	
gw	string	Default gateway	
rotarys	array of numbers (3)	Current position of the rotary switches: Array element 0 = x1 Array element 1 = x10 Array element 2 = x100	
ulPresent	boolean	True, if there is a UL voltage supply detected within valid range	
usVoltage_mv	number	US voltage supply in mV	
ulVoltage_mv	number	UL voltage supply in mV (only available for devices with UL supply)	
inputs	array of numbers (2)	Real state of digital inputs. Element 0 = 1 Byte: Port X1 Channel A to Port X4 Channel B Element 0 = 1 Byte: Port X5 Channel A to Port X8 Channel B	\[128,3\]
output	array of numbers (2)	Real State of digital outputs. Element 0 = 1 Byte: Port X1 Channel A to port X4 Channel B Element 0 = 1 Byte: Port X5 Channel A to port X8 Channel B	\[55,8\]

Name	Data type	Description	Example
consuming	array of numbers (2)	Cyclic data from PLC to device	
producing	array of numbers (2)	Cyclic data from device to PLC	
diag	array of numbers (4)	<div>Diagnostic information</div> <div>Element 0 = 1 Byte: Bit 7: Internal module error (IME) Bit 6: Forcemode active Bit 3: Actuator short Bit 2: Sensor short Bit 1: U_L fault Bit 0: U_S fault</div> <div>Element 1 = 1 Byte: Sensor short circuit ports X1 .. X8.</div> <div>Element 2 = 1 Byte: Actuator short circuit ports X1 Channel A to X4 Channel B</div> <div>Element 3 = 1 Byte: Actuator short circuit ports X5 Channel A to X8 Channel B</div>	
fieldbus	FIELDBUS Object		
FIELDBUS Object			
fieldbus_name	string	Currently used fieldbus	
state	number	Fieldbus state	
state_text	number	Textual representation of fieldbus state: 0 = Unknown 1 = Bus disconnected 2 = Preop 3 = Connected 4 = Error 5 = Stateless	
forcing	FORCING Object	Information about the forcing state of the device	
channels	Array of CHANNEL (16)	Basic information about all input/output channels	

Name	Data type	Description	Example
iol	IOL Object	Contains all IO-Link related information such as events, port states, device parameters.	
iol/diagGateway	array of DIAG	Array of currently active device/gateway related events	
iol/diagMaster	array of DIAG	Array of currently active IOL-Master related events	
iol/ports	array of PORT (8)	Contains one element for each IO-Link port	
CHANNEL Object			
name	string	Name of channel	
type	number	Hardware channel type as number: 0 = DIO 1 = Input 2 = Output 3 = Input/Output 4 = IO-Link 5 = IOL AUX 6 = IOL AUX with DO 7 = IOL AUX with DO. Can be deactivated. 8 = Channel not available	
type_text	string	Textual representation of the channel type	
config	number	Current configuration of the channel: 0 = DIO 1 = Input 2 = Output 3 = IO-Link 4 = Deactivated 5 = IOL AUX	
config_text	string	Textual representation of the current config	
inputState	boolean	Input data (producing data) bit to the PLC	
outputState	boolean	Output data bit to the physical output pin	

Name	Data type	Description	Example
forced	boolean	True, if the output pin of this channel is forced	
simulated	boolean	True, if the input value to the PLC of this channel is simulated	
actuatorDiag	boolean	True, if the output is in short circuit / overload condition	
sensorDiag	boolean	True, if the sensor supply (Pin 1) is in short circuit / overload condition	
maxOutputCurrent_mA	number	Maximum output current of the output in mA	
current_mA	number	Measured current of the output in mA (if current measurement is available)	
voltage_mV	number	Measured voltage of this output in mV (if voltage measurement is available)	
PORT Object			
port_type	string	Textual representation of the IO-Link port type	
iolink_mode	number	Current port mode: 0 = Inactive 1 = Digital output 2= Digital input 3 = SIO 4 = IO-Link	
iolink_text	string	Textual representation of the current port mode	"Digital Input"
aux_mode	number	Indicates the configured mode for the Pin 2: 0 = No AUX 1 = AUX output (always on) 2 = Digital output (can be controlled by cyclic data) 3 = Digital input	
aux_text	string	Textual representation of the current aux mode	"AUX Output"
cq_mode	number	Port mode according to IOL specification	
iq_mode	number	Pin2 mode according to IOL specification	

Name	Data type	Description	Example
port_status	number	Port status according to IOL specification	
ds_fault	number	Data storage error number	
ds_fault_text	string	Textual data storage error.	
device	DEVICE Object	IO-Link device parameters. → Null if no IO-Link communication active	
diag	array of DIAG (n)	Array of port related events	
DIAG Object			
error	number	Error code	
source	string	Source of the current error.	"device" "master"
eventcode	number	Event code according to IO-Link specification	
eventqualifier	number	Event qualifier according to IO-Link specification	
message	string	Error message	"Supply Voltage fault"
DEVICE Object		Standard parameters of the IOL-Device	
device_id	number		
vendor_id	number		
serial	string		
baudrate	string	Baudrate (COM1,2,3)	
cycle_time	number	Cycle time in microseconds	
input_len	array of numbers (n)	IOL input length in bytes	
output_len	array of numbers (n)	IOL output length in bytes	
input_data	array of numbers (n)	IOL input data	
output_data	array of numbers (n)	IOL output data	
pd_valid	number	"1", if IOL input data is valid	
pdout_valid	number	"1", if IOL output data is valid	
FORCING Object		Forcing information of the device	
forcingActive	boolean	Force mode is currently active	

Name	Data type	Description	Example
forcingPossible	boolean	True, if forcing is possible and force mode can be activated	
ownForcing	boolean	True, if forcing is performed by REST API at the moment	
forcingClient	string	Current forcing client identifier	
digitalOutForced	array of numbers (2)	The force values of all 16 digital output channels.	
digitalOutMask	array of numbers (2)	The forcing mask of all 16 digital output channels.	
digitalInForced	array of numbers (2)	The force values of all 16 digital input channels.	
digitalInMask	array of numbers (2)	The forcing mask of all 16 digital input channels.	

12.3.3 Configuration and forcing

Method: POST

URL: <ip>/w/force.json

Parameters: None

Post-Body: JSON Object

Property	Data type	Example values	Description
forcemode	boolean	true / false	Forcing authority on/off
portmode	array (Port mode object)		
digital	array (Digital object)		
iol	array (IOL object)		

Table 36: Root object

Property	Data type	Example values	Remarks
port	integer	0..7	
channel	integer	"a","b"	optional default is "a"
direction	string	"dio","di","do","iol","off", "aux"	
aux	string	"dio","di","do","iol","off", "aux"	IOL only, but optional
inlogica	string	"no","nc"	
inlogicb	string	"no","nc"	
inputlatch	bool	true / false	enable/disable input latch, optional
inputtext	integer	Depends on the fieldbus: ► eip: 0 (off) - 255 (ms) ► ethercat: 0 (off) - 255 (ms) ► pns: 0 (off), 1 (8 ms), 2 (16 ms), 3 (64 ms) ► cclink: 0 (off) - 255 (ms) ► mbtcp: 0 (off) - 255 (ms)	set input extension, optional
inputfilter	integer	0 .. 255	set input filter, optional

Table 37: Port mode object

Property	Data type	Example values	Remarks
port	integer	0..7	
channel	string	"a","b"	
force_dir	string	"phys_out","plc_in","clear"	optional default is "phys_out"
force_value	integer	0,1	

Table 38: Digital object

Property	Data type	Example values	Remarks
port	integer	0..7	
output	array[integer] or null to clear forcing	[55,88,120]	Output forcing
input	array[integer] or null to clear forcing	[20,0,88]	Input simulation to PLC

Table 39: IOL object

12.3.4 Reading and writing ISDU parameters

The *Indexed Service Data Unit* (ISDU) provides a highly flexible message format, which can contain single or multiple commands.

LioN-X IOL-Masters with IIoT support reading and writing ISDU parameters from connected IOL-Devices. It is possible to do this as a bulk transfer by reading and writing of multiple ISDU parameters via a single request.

12.3.4.1 Reading ISDU

Method:	POST
URL:	<ip>/r/isdu.json
Parameters:	port (0-7)
Example:	192.168.1.20/r/isdu.json?port=5
Post-Body:	JSON array of read ISDU object

Property	Data type	Example values	Remarks
ix	integer	0-INT16	Index to be read
subix	integer	0-INT8	Subindex to be read

Table 40: Read ISDU object

Property	Data type	Example values	Remarks
status	integer	0, -1	0 = no error, -1= an error occurred
message	string		Error Message if error occurred
data	array (Read ISDU data object)		data, if no error occurred. otherwise null

Table 41: Read ISDU response object

Property	Data type	Example values	Remarks
ix	integer	0-INT16	Index that was read
subix	integer	0-INT8	Subindex that was read
status	integer	0, -1	0 = no error, -1= an error occurred
eventcode	integer		IOL eventcode if status is -1
data	array[integer]		data, if no error occurred. otherwise null

Table 42: Read ISDU data object

12.3.4.2 Writing ISDU

Method:

POST

URL:

<ip>/w/isdu.json

Parameters:

port (0-7)

Post-Body:

JSON array of write ISDU object

Property	Data type	Example values	Remarks
ix	integer	0-INT16	Index to be read
subix	integer	0-INT8	Subindex to be read
data	array[integer]		Data to be written

Table 43: Write ISDU object

Response: Write ISDU response object

Property	Data type	Example values	Remarks
status	integer	0, -1	0 = no error, -1= an error occurred
message	string		Error Message if error occurred
data	array (Write ISDU data object)		data, if no error occurred. otherwise null

Table 44: Write ISDU response object

Property	Data type	Example values	Remarks
ix	integer	0-INT16	Index that was written
subix	integer	0-INT8	Subindex that was written
status	integer	0, -1	0 = no error, -1= an error occurred
eventcode	integer		IOL eventcode if status is -1

Table 45: Write ISDU data object



Attention: For LiON-X device variants with HTTPS feature, https:// must be used in front of <ip> for every REST API.

12.3.5 Upload and process an IODD file

The REST API supports IODD file upload to the IO-Link Master.

Perform the following work steps:

1. Check file upload status

Send request: GET file_upload

Purpose: Get file upload status to check if there is another upload in progress.

Expected response:

```
{
  "status": 0,
  "progress": 0,
  "name": "",
  "action": "",
  "upid": 0,
  "errid": 0,
  "errstr": "",
  "pschr": 0
}
```

Check the status ID. If status is '0', you can start a new iodd upload process. For reference, see tables [Table 46: Status ID and meaning](#) on page 126 and [Table 47: Error ID and meaning](#) on page 127. Proceed with the next step.

2. Initiate file upload

Send request: POST file_upload

Content-Type: application/json

Purpose: Send details about the file to be uploaded.

Expected response:

```
{
  "action": "iodd", "upid": {
    "size": <total size>, "name": "<file name>",
    "upload id"
  },
  {
    "size": <total size>,
    "name": "<file name>",
    "action": "iodd",
    "upid": <upload id>
  }
}
```

The upload id (upid) is a number used by the backend to identify a specific upload and parsing process. It has to be used as a query parameter in the following steps.

The action will always be iodd.

The size is the total size of the file in bytes.

The correct content type has to be set.



Note: Remember the upload ID (upid) for subsequent steps

3. Upload file content

Send request: POST file_upload?upid=<value> → Use the upid value from Step 2.

Content-Type: application/octet-stream → The correct content type has to be set.

Purpose: Send file or file chunks (max chunk size: 64KB).



Attention: Sending file chunks bigger than 64KB will result in unresponsive behavior.

4. Monitor upload status

Send request: GET file_upload?upid=<value> → Use the upid value from Step 2.

Purpose: Get the current file upload status.

Expected response:

```
{
  "status": <status id value>,
  "progress": <percentage>,
  "name": "<file name given in step 2>",
  "action": "ioodd",
  "upid": <upload id chosen in step 2>,
  "errid": <error id>,
  "errstr": "",
  "pschr": <count of parsed characters>
}
```

Repeat this step until the status becomes 'idle'. For some states this request triggers the necessary transitions in the internal state machine.

Only after the backend is sure that the correct client identified by its upid received the action finished or error state it will transition to the next one, the idle state.

The fields now show values depending on what was sent in step 2 and on the current process status.

Status ID	Status
0	File upload idle. New upload can be triggered.
1	File upload started.
2	File upload in progress.
3	File upload finished.
4	Error during file upload.
5	File upload timeout.
6	IODD parsing started.
7	IODD parsing finished.
8	IODD parsing error.
9	IODD parsing canceled.

Table 46: Status ID and meaning

ID	Error
0	No error.
1	Json parsing error.
2	Json type error.
4	Upload error.
5	File opening error.
6	File writing error.
7	Thread creating error.
8	Error during file copy.
9	Upload timeout.
10	Upload size exceeded.
11	Unknown action.
12	No upload id.
13	IODD paasing error.
14	Internal error.
15	IODD store full. Delete an IODD before uploading a new one.
16	Internal error.
17	IODD file CRC error.
18	Standard IODD file crc error.
19	No available space for parsing.

Table 47: Error ID and meaning

12.3.6 Example: Reading ISDU

ISDU read request

```
[
  {
    "ix":5,"subix":0},
    {
    "ix":18,"subix":0},
    {
    "ix":19,"subix":0},
    {
    "ix":20,"subix":0}
]
```

Response

```
{
  "message": "OK",
  "data":
  [
    {
      "ix":5,"subix":0,"status":-1,"eventcode":32785},
      {
        "ix":18,"subix":0,"data":[79,68,83,49,48,76,49,46,56,47,76,65,54,44,50,
          48,48,45,77,49,50],"status":0},
        {
          "ix":19,"subix":0,"data":[53,48,49,50,57,53,51,53],"status":0},
          {
            "ix":20,"subix":0,"data":[100,105,115,116,97,110,99,101,32,115,101,110,
              115,111,114],"status":0}
        ],
        "status":0}
  ]
}
```

12.3.7 Example: Writing ISDU

ISDU write request

```
[
  {
    "ix":24,"subix":0,"data":[97,98,99,100,101,102]},
    {
    "ix":9,"subix":0,"data":[97,97,97,97,97,98]}
]
```

Response

```
{
  "message": "OK",
  "data": [
    {
      "ix":24,"subix":0,"status":0},
      {
        "ix":9,"subix":0,"eventcode":32785,"status":-1}
    ],
    "status":0}
}
```


12.4 CoAP server

The CoAP server functions are **only** applicable for the following LioN-X variants:

- ▶ 0980 XSL 3912-121-007D-00F
- ▶ 0980 XSL 3912-121-007D-01F
- ▶ 0980 XSL 3912-121-027D-01F
- ▶ 0980 XSL 3913-121-007D-01F
- ▶ 0980 XSL 3913-121-027D-01F

The **Constrained Application Protocol** (CoAP) is a specialized Internet application protocol for constrained networks such as lossy or low power networks. CoAP is useful especially in M2M (Machine to Machine) communication and can be used to translate simplified HTTP/HTTPS requests of low speed networks.

CoAP is based on the Server-Client principle and a service layer protocol that lets nodes and machines communicate with each other. The LioN-X multiprotocol variants provide CoAP server functionalities via a REST API interface over UDP.

12.4.1 CoAP configuration

In delivery state, CoAP functions are *disabled*. The CoAP server can be configured either using the Web interface or directly via a JSON object sent in an HTTP/HTTPS request. For more information see chapter [CoAP configuration - Quick start guide](#) on page 133.

The configuration URL is:

```
http://[ip-address]/w/config/coapd.json
```

The configuration can also read back as a JSON file:

```
http://[ip-address]/r/config/coapd.json
```

The configuration is a JSON object. Each JSON member is a configuration element. The object must not contain all elements. Only the provided elements will be changed. The configuration changes apply only after a device restart.

The following configuration elements are available (default values in bold):

Element	Data type	Description	Example data
enable	boolean	Master switch for the CoAP server	true / false
port	integer (0 to 65535)	Port of the CoAP server	5683

Table 48: CoAP configuration

CoAP response:

The resulting response is a JSON object with a "status" field. Status should be "0" if no error occurred, and "-1" if there is an error.

In case of an error, the response contains an error array.

The error array contains an error object for each error occurred. The object consists of a field "Element" which names the config element that caused the error, and of a field "Message" for the error message.

Examples:

```
{ "status": -1, "error": [{ "Element": "upcua-enable", "Message": "Boolean expected" }] }

{ "status": 0 }

{ "status": -1, "error": [{ "Element": "root", "Message": "Not a JSON object" }] }
```

12.4.2 REST API access via CoAP

A connection to the CoAP server running on the LioN-X multiprotocol variants can be established via the following URL:

```
coap://[ip-address]:[port]/[api]
```

For LioN-X, the following REST API Requests (JSON format) can be accessed via a CoAP endpoint:

Type	API	Note
GET	/r/status.lr	
GET	/r/system.lr	
GET	/info.json"	
GET	/r/config/net.json	
GET	/r/config/mqtt.json	
GET	/r/config/opcu.json	
GET	/r/config/coapd.json	
GET	/r/config/syslog.json	
GET	/contact.json	
GET	/fwup_status	
GET	/iolink/v1/gateway/identification	
GET	/iolink/v1/gateway/capabilities	
GET	/iolink/v1/gateway/configuration	
GET	/iolink/v1/gateway/events	
GET	/iolink/v1/masters	
GET	/iolink/v1/masters/1/capabilities	
GET	/iolink/v1/masters/1/identification	
GET	/iolink/v1/masters/1/ports	
GET	/iolink/v1/masters/1/ports/{port_number}/capabilities	This API is available for all 8 ports. {port_number} should be between "1" and "8".
GET	/iolink/v1/masters/1/ports/{port_number}/status	This API is available for all 8 ports. {port_number} should be between "1" and "8".
GET	/iolink/v1/masters/1/ports/{port_number}/configuration	This API is available for all 8 ports. {port_number} should be between "1" and "8".
GET	/iolink/v1/devices/master1port{port_number}/identification	This API is available for all 8 ports. {port_number} should be between "1" and "8".

Type	API	Note
GET	/iolink/v1/devices/master1port{port_number}/capabilities	This API is available for all 8 ports. {port_number} should be between "1" and "8".
GET	/iolink/v1/devices/master1port{port_number}/processdata/getdata/value	This API is available for all 8 ports. {port_number} should be between "1" and "8".
GET	/iolink/v1/devices/master1port{port_number}/events	This API is available for all 8 ports. {port_number} should be between "1" and "8".

Table 49: REST API access via CoAP

12.4.3 CoAP configuration - Quick start guide

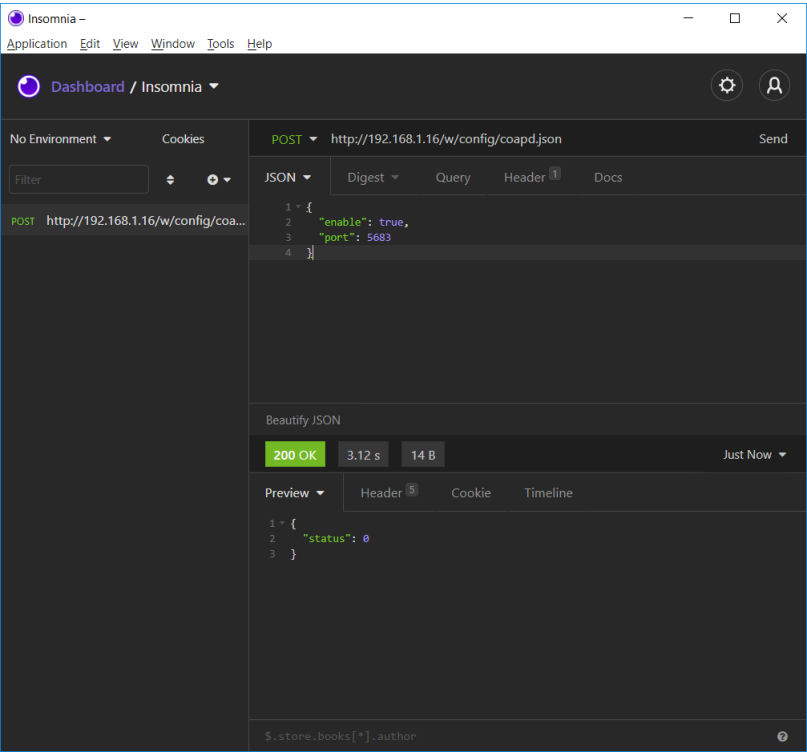
i **Attention:** Lumberg Automation™ is not responsible for any content of the referenced Web pages and provides no warranty for any functionality of the named third party software.

12.4.3.1 CoAP configuration via JSON

1. Depending on your application case, download and install *Insomnia* or a comparable application: <https://insomnia.rest/download/>

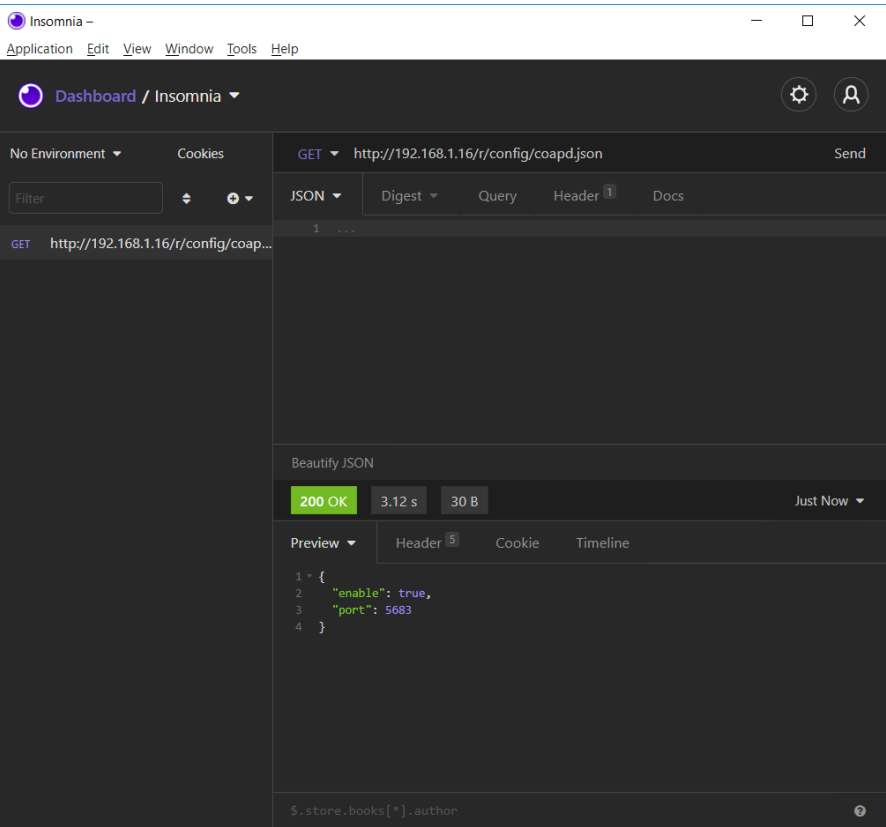
2. Configure CoAP:

POST: [IP-address] /w/config/coapd.json



3. Read CoAP configuration:

GET: [IP-address]/r/config/coapd.json



12.5 Syslog

Syslog functions are **only** applicable for the following LioN-X variants:

- ▶ 0980 XSL 3912-121-007D-00F
- ▶ 0980 XSL 3912-121-007D-01F
- ▶ 0980 XSL 3912-121-027D-01F
- ▶ 0980 XSL 3913-121-007D-01F
- ▶ 0980 XSL 3913-121-027D-01F

The LioN-X multiprotocol variants provide a Syslog client which can connect with a configured Syslog server and is able to log messages.

Syslog is a platform-independent standard for logging messages. Each message contains a timestamp as well as information about the severity level and the subsystem. The Syslog protocol RFC5424 is based on the Server-Client principle and lets machines and devices send messages in the network and collect them centrally. (For more details on the used syslog standard, please refer to <https://datatracker.ietf.org/doc/html/rfc5424>.)

LioN-X supports the storage of 256 messages in a ring buffer which are sent to the configured Syslog server. When the ring is full with 256 messages, the oldest message is always replaced by the newly arriving messages. All messages can be saved on the Syslog server. The Syslog client of the IO-Link Master will not store any message permanently.

12.5.1 Syslog configuration

In **delivery state**, Syslog functions are **disabled**. The Syslog client can be configured either using the Web interface or directly via a JSON object sent in an HTTP/HTTPS request. For more information see chapter [Syslog configuration - Quick start guide](#) on page 138.

The configuration URL is:

```
http://[ip-address]/w/config/syslog.json
```

The configuration can also read back as a JSON file:

```
http://[ip-address]/r/config/syslog.json
```

The configuration is a JSON object. Each JSON member is a configuration element. The object must not contain all elements. Only the provided elements will be changed. The configuration changes apply only after a device restart.

The following configuration elements are available (default values in bold):

Element	Data type	Description	Example data
syslog-enable	boolean	Master switch for the Syslog client	true / false
global-severity	integer	<u>Severity level of Syslog client</u> 0 – Emergency 1 – Alert 2 – Critical 3 – Error 4 – Warning 5 – Notice 6 – Info 7 – Debug The client will log all messages of severity according to the setting, including all below levels.	0/1/2/ 3 /4/5/6/7
server-address	string (IP address)	IP address of the Syslog server	192.168.0.51 (Default: null)
server-port	integer (0 to 65535)	Server port of the Syslog server	514
server-severity	integer (0 to 7)	<u>Severity level of Syslog server</u> 0 – Emergency 1 – Alert 2 – Critical 3 – Error 4 – Warning 5 – Notice 6 – Info 7 – Debug	0/1/2/ 3 /4/5/6/7

Table 50: Syslog configuration

Syslog response:

The resulting response is a JSON object with a "status" field. Status should be "0" if no error occurred, and "-1" if there is an error.

In case of an error, the response contains an error array.

The error array contains an error object for each error occurred. The object consists of a field "Element" which names the config element that caused the error, and of a field "Message" for the error message.


Examples:

```
{ "status": -1, "error": [{ "Element": "upcua-enable", "Message": "Boolean  
expected" }] }
```

```
{ "status": 0 }
```

```
{ "status": -1, "error": [{ "Element": "root", "Message": "Not a JSON  
object" }] }
```

12.5.2 Syslog configuration - Quick start guide



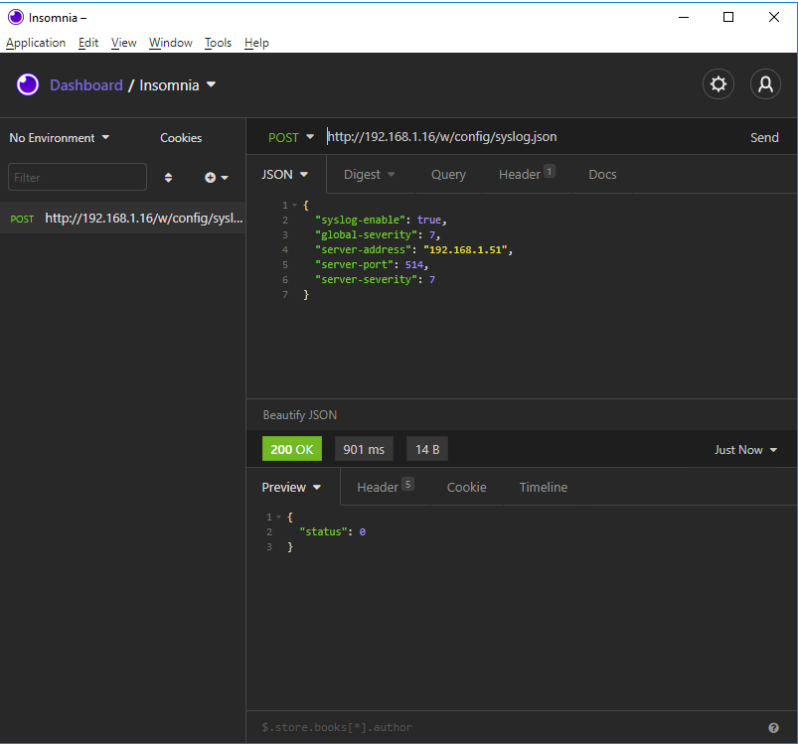
Attention: Lumberg Automation™ is not responsible for any content of the referenced Web pages and provides no warranty for any functionality of the named third party software.

12.5.2.1 Syslog configuration via JSON

1. Depending on your application case, download and install *Insomnia* or a comparable application: <https://insomnia.rest/download/>

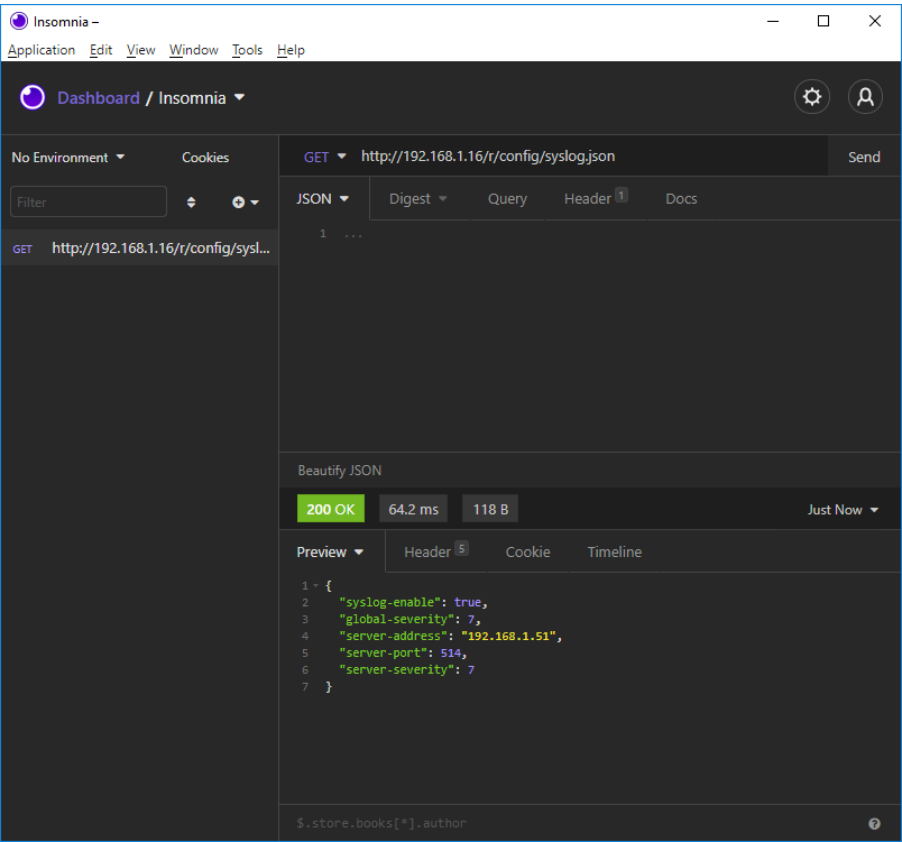
2. Configure Syslog:

POST: [IP-address]/w/config/syslog.json



3. Read Syslog configuration:

GET: [IP-address]/r/config/syslog.json



12.6 Network Time Protocol (NTP)

The NTP function is **only** applicable for the following LioN-X variant:

- ▶ 0980 XSL 3912-121-007D-00F
- ▶ 0980 XSL 3912-121-007D-01F
- ▶ 0980 XSL 3912-121-027D-01F
- ▶ 0980 XSL 3913-121-007D-01F
- ▶ 0980 XSL 3913-121-027D-01F

The LioN-X multiprotocol variants provide an NTP client (version 3) which can connect with a configured NTP server and is able to synchronize the network time at a configurable interval.

NTP is a network protocol which uses UDP datagrams to send and receive timestamps in order to synchronize with a local clock. The NTP protocol RFC1305 is based on the Server-Client principle and exclusively supplies the synchronization with Coordinated Universal Time (UTC). (For more details on the used NTP standard, please refer to <https://datatracker.ietf.org/doc/html/rfc1305>.)

12.6.1 NTP configuration

In **delivery state**, the NTP client is **disabled**. The NTP client can be configured either using the Web interface or directly via a JSON object sent in an HTTP/HTTPS request. For more information see chapter [NTP configuration - Quick start guide](#) on page 142.

The configuration URL is:

```
http://[ip-address]/w/config/ntpc.json
```

The configuration can also read back as a JSON file:

```
http://[ip-address]/r/config/ntpc.json
```

The configuration is a JSON object. Each JSON member is a configuration element. The object must not contain all elements. Only the provided elements will be changed. The configuration changes apply only after a device restart.

The following configuration elements are available (default values in bold):

Element	Data type	Description	Example data
NTP client state	boolean	Master switch for the NTP client	true / false
Server address	string	IP address of the NTP server	192.168.1.50
Server port	integer	Port of the NTP server	123
Update interval	integer	Interval at which the client will connect with the configured NTP server (see table row "Server address"). Note: This value is in seconds.	1/2/10/ 60

Table 51: NTP configuration

NTP response:

The resulting response is a JSON object with a "status" field. Status should be "0" if no error occurred, and "-1" if there is an error.

In case of an error, the response contains an error array.

The error array contains an error object for each error occurred. The object consists of a field "Element" which names the configuration element that caused the error, and of a field "Message" for the error message.

Examples:

```
{ "status": -1, "error": [{ "Element": "ntpc-enable", "Message": "Boolean expected" }] }
```

```
{ "status": 0 }
```

```
{ "status": -1, "error": [{ "Element": "root", "Message": "Not a JSON object" }] }
```

12.6.2 NTP configuration - Quick start guide

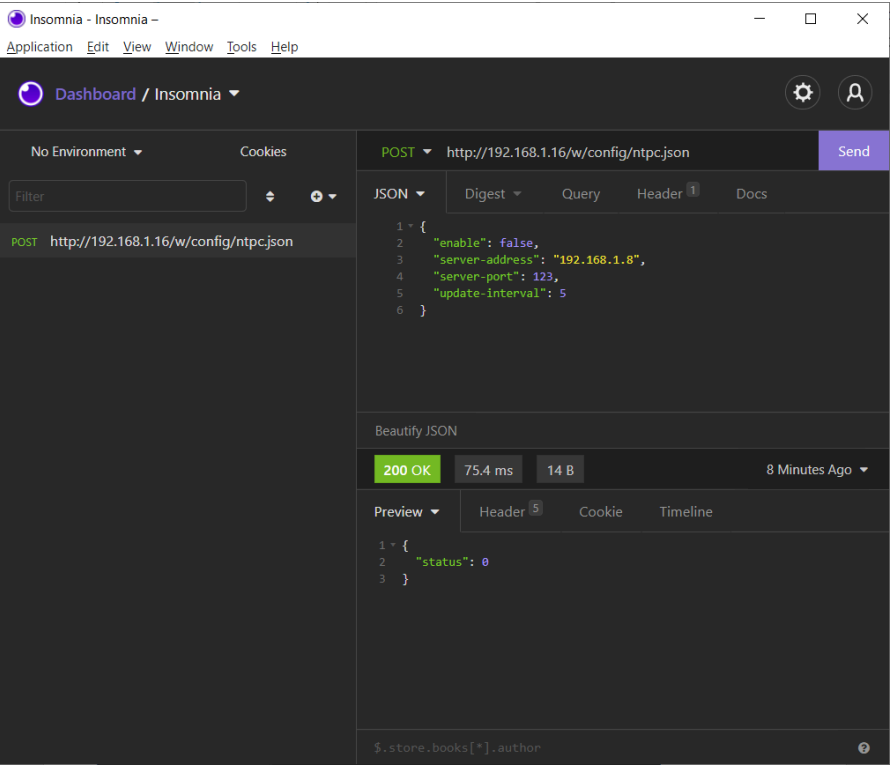
i **Attention:** Lumberg Automation™ is not responsible for any content of the referenced Web pages and provides no warranty for any functionality of the named third party software.

12.6.2.1 NTP configuration via JSON

1. Depending on your application case, download and install *Insomnia* or a comparable application: <https://insomnia.rest/download/>

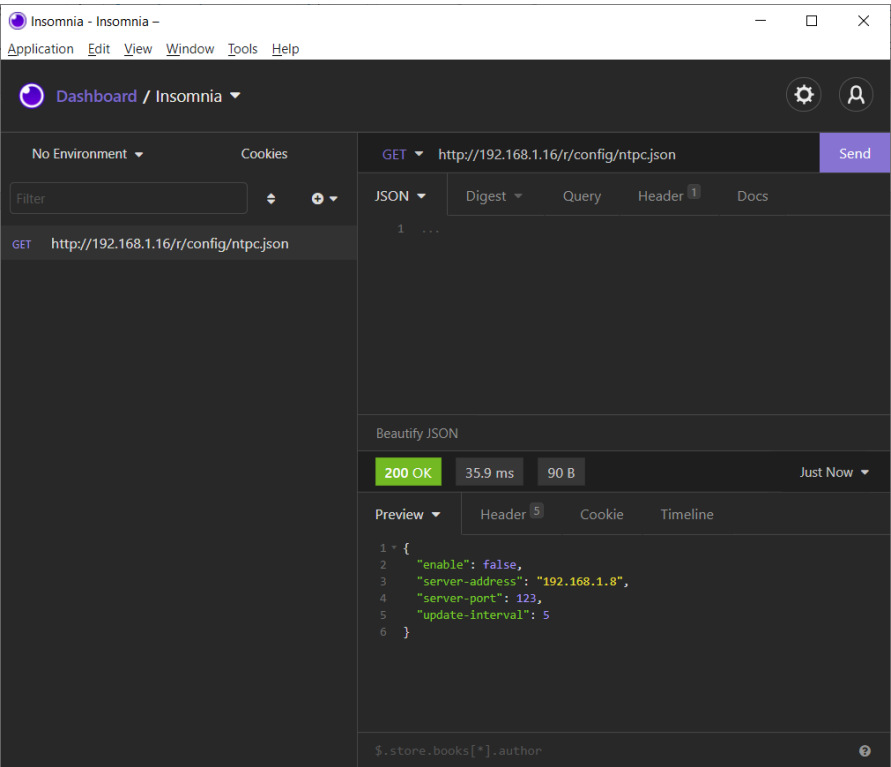
2. Configure NTP:

POST: [IP-address]/w/config/ntpc.json



3. Read NTP configuration:

GET: [IP-address]/r/config/ntpc.json



13 The integrated Web server

All device variants are equipped with an integrated Web server which makes functions for the device configuration and the display of status and diagnostic information available via a Web interface.

The Web interface provides an overview of the configuration and status of the device. It is also possible to use the Web interface to trigger a reboot, reset to the factory defaults, or perform a firmware update.

Enter "http://" or "https://" followed by the IP address, such as "http://192.168.1.5", in your Web browser's address bar. If the status page of the device is not displayed, check your browser and firewall settings.

13.1 LioN-X 0980 XSL... variants

13.1.1 The Status page

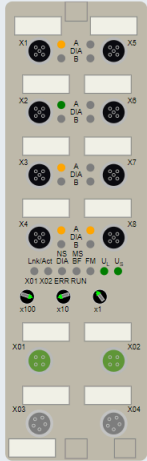


LioN-X Web Interface

Status Ports System User Contact

Status

Device Overview



Device Information

Name: LioN-X 8xIO-Link Class A with Multiprotocol
 Application Version: 10.0.1.26228
 Fieldbus Version: 1.0.0.0
 Bus: **OPERATE**
 Device Diagnosis: Forcemode: Forcing is locked. **Locked**

Port Information

Channel	Type	Configuration	State	Dia	Details
X1 A	IO-Link	Digital Input 1 Bit in	On		①
X1 B	Digital Input/Output	Digital Input 1 Bit in	Off		①
X2 A	IO-Link	IO-Link 4 Bytes in, 4 Bytes Out	Operate		①
X2 B	Digital Input/Output	Digital Input 1 Bit in	Off		①
X3 A	IO-Link	Digital Output 1 Bit Out	On		①
X3 B	Digital Input/Output	Digital Input 1 Bit in	Off		①
X4 A	IO-Link	Digital Output 1 Bit Out	On		①
X4 B	Digital Input/Output	Digital Input 1 Bit in	Off		①
X5 A	IO-Link	Digital Input 1 Bit in	Off		①
X5 B	Digital Input/Output	Digital Input 1 Bit in	Off		①
X6 A	IO-Link	Digital Input 1 Bit in	Off		①
X6 B	Digital Input/Output	Digital Input 1 Bit in	Off		①
X7 A	IO-Link	Digital Input 1 Bit in	Off		①
X7 B	Digital Input/Output	Digital Input 1 Bit in	Off		①
X8 A	IO-Link	Digital Output 1 Bit Out	On		①
X8 B	Digital Input/Output	Digital Input 1 Bit in	Off		①


The status page provides a quick overview of the current state of the device.

The left side shows a graphical representation of the module with all its LEDs and the positions of the rotary encoding switches.

The right side shows the "Device Information" table with some basic data for the module; for example, the variant, the cyclic communication status and a diagnostic indicator. The indicator shows whether diagnostics for the module exist.

The "Port Information" table shows the configuration and state of the I/O ports.

13.1.2 The Ports page



lumbergautomation
A BELDEN BRAND

LioN-X Web Interface

StatusPortsSystemUserContact

Port Details

Show details for port

☐ X1☒ X2☐ X3☐ X4☐ X5☐ X6☐ X7☐ X8

Port Information

Forcemode

Forcemode off

Port

X2

Type

IO-Link

Dia

IO-Link

Port Diagnosis

No diagnosis

Pin 4 / Channel A

IO-Link

Function4 Bytes In, 4 Bytes Out

State

Operate

Pin 2 / Channel B

IO-Link

FunctionInactive

State

Inactive

IO-Link Events

No events

IO-Link

Vendor ID362

Device ID36741114

Vendor NameBELDEN Deutschland GmbH

Vendor Textwww.beldensolutions.com

Product Name0960 IOL 381-001

Product ID934992002

Product TextLioN-P IO-Link I/O-Hub, 16DI

Serial No.x42n

HW RevisionV1

FW RevisionV3.0.0.0

SpeedCOM3

Cycle time1000

IODD

Upload

Configure device

Application Name (Tag)

appTag7

Set

83 c9 00 00

HEX

Name	Value
Port X1A	false
Port X1B	false
Port X2A	false
Port X2B	false
Port X3A	false
Port X3B	false

The page shows detailed port information. In the field **Port Diagnosis**, incoming and outgoing diagnostics are displayed as clear text. **Pin 2** and **Pin 4** contain information about the configuration and state of the port. For IO-Link ports, additional information relating to the connected sensor and the process data is displayed.

13.1.2.1 IODD upload

The button **UPLOAD** allows uploading an IODD file into the module, regardless of the device for which the IODD is designed.

The maximum number of IODDs is limited due to storage space. If there is no more space for a new IODD left, there will be a message of the detected error.

With the help of the IODD management page ("System" page), not used IODDs can be deleted. If there is already a matching IODD stored in the system for the connected IO-Link device, the button **CONFIGURE** is shown. By clicking this button, the page "IODD - Device configuration" will open, where the IO-Link device can be configured.

146

Manual CC-Link IE Field Basic
Version 2.0 08/2024

IODD - Device configuration

Quality (ic:225, subic:0)	At System Limit		
Vendor Name (ic:16, subic:0)	SICK AG		
Product Name (ic:18, subic:0)	WTB4C-3P3464		
Serial Number (ic:21, subic:0)	08470007		
Hardware Revision (ic:22, subic:0)	1.40		
Firmware Revision (ic:23, subic:0)	1.47		
Quality (ic:225, subic:0)	At System Limit		
Q Signal (ic:226, subic:1)	No target detected		
Pollution (ic:226, subic:2)	None		
Short Circuit (ic:226, subic:5)	None		
Scanning Distance (ic:144, subic:0)	<input type="text" value="100"/>	mm	<input type="text" value="4"/> mm <input type="text" value="150"/> mm
Hysteresis (ic:145, subic:0)	<input type="text" value="5"/>		<input type="text" value="0"/> <input type="text" value="15"/>
System Command (ic:2, subic:0)	<input type="button" value="Teach"/>		
Key Lock (ic:81, subic:1)	<input type="text" value="Unlocked"/>		

13.1.3 The System page



LioN-X Web Interface

Status
Ports
System
User
Contact

System

General Information

Firmware	
Application Version	11.1.6.4700
Fieldbus Version	1.2.0.0
IO Version	1.0.556.0
Safety Core Version	0.3 - CRC: 0x0A3AC5AD
Safety App Version	0.3 - CRC: 0x190E1B1F
Device	
Name	LioN-Safety 0/4-F-DI 4-F-DO 2-IOLM M12 - EIP / CIP Safety
Product ID	0980 SSL 3131-121-007D-202
Ordering Number	935023001
Hardware	1.0
Serial Number	123456
Production Date	2020-12-24T12:00:00Z
Ethernet	
MAC Address	3C:B9:A6:20:05:30
Network	
IP Address	192.168.1.10
Subnetmask	255.255.255.0
Gateway	192.168.1.100
Source	Manual
Fieldbus	
Name	EthernetIP
State	ERROR

IP Settings

Parameter	Settings
IP-Address	<input type="text" value="0"/> <input type="text" value="0"/> <input type="text" value="0"/> <input type="text" value="0"/>
Subnet Mask	<input type="text" value="0"/> <input type="text" value="0"/> <input type="text" value="0"/> <input type="text" value="0"/>
Gateway	<input type="text" value="0"/> <input type="text" value="0"/> <input type="text" value="0"/> <input type="text" value="0"/>
Startup configuration	<input checked="" type="radio"/> Static <input type="radio"/> DHCP

MQTT Config

Mqtt state	Disabled
Broker	192.168.1.1
Port	1883
Base Topic	iomx
Auto Publish	Yes
Publish Interval (ms)	2000
Publish Identify	Yes
Publish Config	Yes
Publish Status	Yes
Publish Process	Yes
Publish Devices	No
Will State	Disabled
Will Topic	
Listen for Commands	No
Process Forcing	No
Change Config	No
Device Reset	No
QoS	At most once

OPC UA Server Config

Opua state	Disabled
Port	4840
Anonymous login	Yes
Listen for Commands	No
Process Forcing	No
Change config	No
Device Reset	No

Syslog

Syslog state	Disabled
Global severity	3
Server address	
Server port	514
Server severity	3

CoAP

CoAP state	Disabled
Port	5683

NTP

NTP client state	Disabled
Server address	0.0.0.0
Server port	123
Update interval	60

License Information

Config upload/download

Choose config file to upload:
 No file chosen

IODD

Restart device

☐ Confirm to restart the device. All connections will be closed.

Reset configuration to factory defaults

Restoring factory settings affects all network parameters, including fieldbus specific settings.
 All network connections will be closed.

Note: If the module has rotary switches, the new IP address is equivalent to the rotary switch position.

☐ Confirm to reset the device. All configuration data will be overwritten by default values!

Firmware update

System diagnosis

Store time:

The System page shows the basic information for the module like Firmware version, Device information, Ethernet, Network and Fieldbus information.

IP Settings

Use this parameter to change the current IP address of the module.

For PROFINET, this is only useful during commissioning. Normally, the PLC sets the IP address at start-up by detecting the PROFINET module via its device name.

13.1.3.1 License

This button opens a new window with Open Source Software information used in this product.

13.1.3.2 Config upload/download

With this feature, settings configured via the Web interface can be stored outside the I/O-Device (Download) for later Upload, e.g. after an I/O-Device change.

Config upload/download

Choose config file to upload:

Browse...

No file selected.

Upload config

Download config

Downloaded config_LioN-X_SN123456_2024-06-03T13-49-09.cfg

The following settings will be stored inside this file:

Scope	Type	Setting	Options	Details
Gateway		deviceId		To check device identity.
	iol	applicationSpecificTag		
	iol	functionTag		
	iol	locationTag		
		forcing		Enable/disable forcing
		channel_count		
		network configuration	ip	
			snMask	
			gw	
			source	1 - manual 2 - dhcp 3 - rotary 4 - dcp
Channel		index		channel index starting from 0
		channel configuration		0 - DIO 1 - IN 2 - OUT 3 - IOL 4 - AUX 5 - SAFIN 6 - SAFOUT
	iol	forced		
	iol	simulated		
	iol	force values		array
	iol	simulated		
	iol	sim values		array
	iol	validation	option	validation and backup
			vendorId	
			deviceId	
	digital	force		

Scope	Type	Setting	Options	Details
	digital	force value		
	digital	simulate		
	digital	sim value		
	digital	inputPolarity		
	digital	autorestart mode		
	digital	inputFilter100us		
	digital	currentLimit		
	digital	outputRestartMode		
	digital	failsafeMode		
	digital	surveillanceTimeouMs		
OPC UA		opcua	opcua-enable	
			port	
			anon-allowed	
			commands-allowed	
			force-allowed	
			reset-allowed	
			config-allowed	
	digital		dcu-allowed	
MQTT		mqtt	mqtt-enable	
			broker	
			login	
			password	
			port	
			base-topic	
			will-enable	
			will-topic	
			auto-publish	
			publish-interval	
			publish-identity	

Scope	Type	Setting	Options	Details
	iol		publish-config	
			publish-status	
			publish-process	
			publish-devices	
			commands-allowed	
			force-allowed	
			reset-allowed	
			config-allowed	
			qos	
SYSLOG		syslog	syslog-enable	
			global-severity	
			server-address	
			server-port	
			server-severity	
COAP		coap	enable	
			port	
NTP		ntpc	enable	
			server-address	
			server-port	
			update-interval	

13.1.3.3 IODD

The button **Manage IODDs** opens a new page for the IODD management on the I/O-Device. IODDs can be uploaded or deleted on this page, and all uploaded IODDs are listed here. For configuring connected IO-Link devices, open the related "Ports" page.

Manage IODDs			
Vendor ID	Device ID	Name	Action
26	1040119	SICK-WTB4C-3P3464-20100429-IODD1.0.1.xml	Delete
362	3674113	BeldenDeutschlandGmbH-0960IOL381-001-20171117-IODD1.1.xml	Delete
			Upload

13.1.3.4 Restart device

The module initializes a software reset.

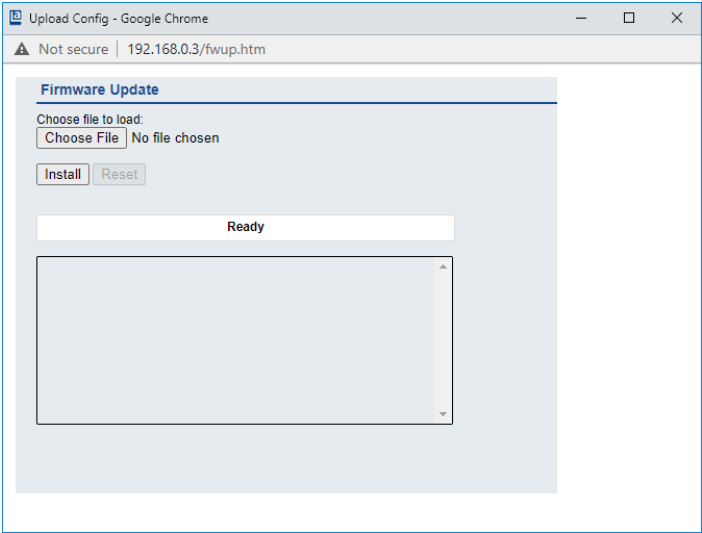
13.1.3.5 Reset configuration to factory defaults

The module restores to the default factory settings.

13.1.3.6 Firmware update

The module initializes a Firmware update.

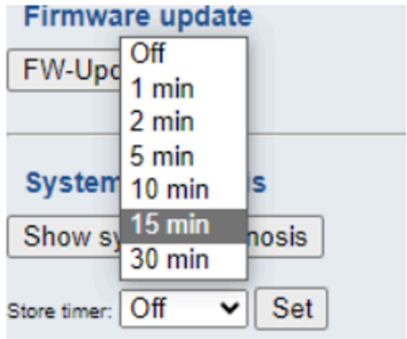
For a firmware update choose the *.ZIP container available on our website or ask our support team. Afterwards follow the instructions shown on your screen.



13.1.3.7 System diagnosis

All Syslog messages will be displayed in a ring buffer with 512 entries. By activation of the 'Store timer', the buffer content will be stored nonvolatile in the selected interval of 1, 2, 5, 10, 15 or 30 minutes.

The default value is 'Off' (no nonvolatile storage of system diagnosis ring buffer).



13.1.3.8 HTTPS

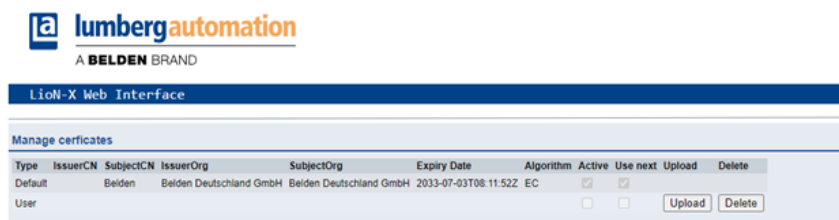
Https-based or http-based communication with the Lion-X Web server. If this option is selected, the communication with the Lion-X Web server will be secure and encryption-based.

13.1.3.9 HTTPS certificate manager

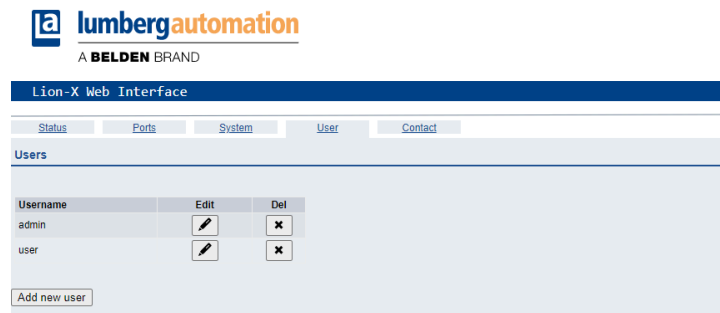
The HTTPS certificate manager shows a default certificate and the currently active certificate for the Web server. You are allowed to delete, upload and select new certificates. For an example of how to create and sign your own certificate with *Mako Server* by Real Time Logic LLC, refer to chapter [Certificate creation – example](#) on page 156.



Attention: It is not possible to delete the default certificate.



13.1.4 The User page



The User page provides the user management of the Web interface. New users with access rights "Admin" or "Write" can be added here. For

security reasons please change the default admin password immediately after configuring the device.

Default user login data:

- ▶ User: admin
- ▶ Password: private

13.1.5 Certificate creation – example

1. Create certificate database:

In *Makro server* by Real Time Logic LLC, navigate to *Create Certificate Database*. Enter *DB Name*, select *Type* as “Elliptic Curve Certificate”, and select *SharkSSL Mode* as shown below.

2. Create certificate:

- ▶ Key Size: Any value from drop down list can be selected. “secp256r1” is recommended.
- ▶ Signature size: “sha256” → The higher the number in the encryption, the higher the security level of communication.

- ▶ Days: Enter the number of days you wish this certificate to be valid (e.g. "3650" for 10 years).
- ▶ Country name: "DE" ("DE" stands for Germany. For other countries, please refer to <https://www.ssl.com/country-codes/>).
- ▶ State or Province: Enter your local province or state (e.g. "Baden-Württemberg").
- ▶ City or Locality: Enter name of city (e.g. "Neckartenzlingen").
- ▶ Organization Name: Enter name of organization (e.g. "Belden Deutschland GmbH").
- ▶ Organization Unit: Enter name of organization unit (e.g. "Belden Deutschland GmbH").
- ▶ Common Name: The common name here belongs to domain name. It must reflect fully or in parts the domain name of where LioN-X device is accessible.
- ▶ Email address: The e-mail address of the certificate's creator.

Create Certificate Database

Database	example (SharkSSL Enabled)	
Key Size	secp256r1	?
Signature Size	sha256	?
Days	10950	?
Country Name	DE	?
State or Province	Baden-Wuttemberg	?
City or Locality	Neckartenzlingen	?
Organization Name	Belden Deutschland GmbH	?
Organizational Unit	Belden Deutschland GmbH	?
Common Name	Lumberg	?
Email Address	info@belden.com	?

Create Key & Certificate

Certificate Management App (V 5) Real Time Logic © 2018

3. Upload the certificate onto the LioN-X device:

In the HTTPS certificate manager (Belden Web interface), click on the button *Upload* and choose the “.pem” and “.key” files generated in the previous step for the upload.

Click on *Upload*.

Server certificate upload

Chose server certificate file:
 certificate.pem

Choose private key file:
 privkey.pem

Passphrase:

Upload idle.
Uploading file...
File uploaded succesfully
Running action...
Post upload action finished

13.2 LioN-Xlight 0980 LSL... variants

13.2.1 The System page



LioN-X Webserver

System Contact

System

General Information

Firmware	
Version	10.0.0
Device	
Name	LioN-Xlight 8xIO-Link Class A with Profinet
Product ID	0980 LSL 3010-121-0006-001
Ordering Number	935701001
Hardware	1.0
Serial Number	123456
Production Date	2020-12-24T12:00:00Z
Ethernet	
MAC Address	3C:B9:A6:20:05:30
Network	
IP-Address	192.168.0.3
Subnetmask	255.255.255.0
Gateway	192.168.0.3
Fieldbus	
Name	PROFINET
State	OPERATE

IP Settings

Parameter	Settings			
IP-Address	192	168	0	3
Subnet Mask	255	255	255	0
Gateway	192	168	0	3
Startup configuration	<input checked="" type="radio"/> Static <input type="radio"/> DHCP			

Submit

Restart device

☐ Confirm to restart the device. All connections will be closed.

Restart

Reset configuration to factory defaults

Restoring factory settings affects all network parameters, including fieldbus specific settings. All network connections will be closed.

Note: If the module has rotary switches, the new IP address is equivalent to the rotary switch position.

☐ Confirm to reset the device. All configuration data will be overwritten by default values!

Factory Reset

Firmware update

FW-Update

The System page shows the basic information for the module like Firmware version, Device information, Ethernet, Network and Fieldbus information.

Restart Device

The module initializes a software reset.

Reset to Factory Settings

The module restores to the default factory settings.

IP Settings

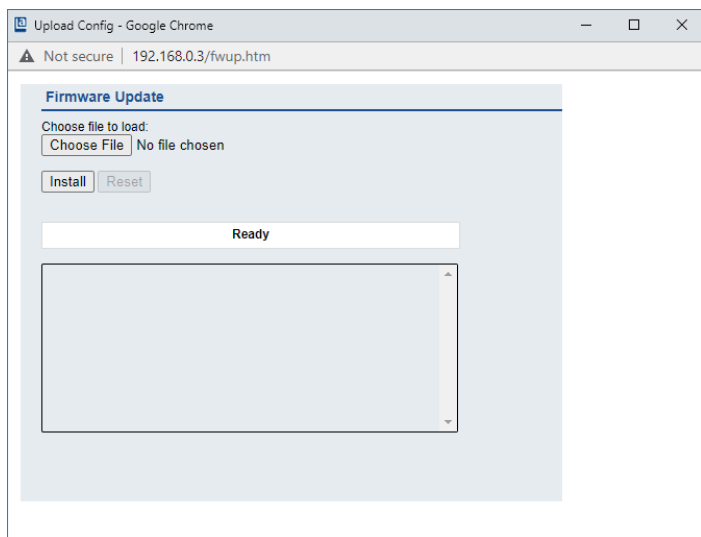
Use this parameter to change the current IP address of the module.

For PROFINET, this is only useful during commissioning. Normally, the PLC sets the IP address at start-up by detecting the PROFINET module via its device name.

Firmware Update

The module initializes a Firmware update.

For a firmware update choose the **.ZIP* container available on our website or ask our support team. Afterwards follow the instructions shown on your screen.



14 IODD

IODD functions are **only** applicable for the following device variants:

- ▶ 0980 XSL 3912-121-007D-00F
- ▶ 0980 XSL 3912-121-007D-01F
- ▶ 0980 XSL 3912-121-027D-01F
- ▶ 0980 XSL 3913-121-007D-01F
- ▶ 0980 XSL 3913-121-027D-01F

The **IO Device Description** (IODD) is a set of files formally describing an IO-Link Device. The IODD is created by the vendor and is mandatory for each IO-Link Device.

Belden LioN-X IO-Link Masters with the "IODD on Module" functionality are ready to use IODDs in order to make the IO-Link Device configuration much more easier and the process data human readable in a better way. IODDs can be uploaded via the Web Interface and remanently stored on the IO-Link Master afterwards.

If a corresponding IO-Link Device is connected, the stored IODD is used to provide a user friendly configuration page, where all parameters of the device can be viewed and edited. Additionally, according to the IODD, the process data will also be formatted and displayed to the user.

14.1 IO-Link Device parameters and ISDU requests

Every IO-Link Device provides parameters that can be read and written via the special IO-Link service ISDU (Indexed **S**ervice **D**ata **U**nit).


Every parameter is addressed by an index. Sub-indices are possible but optional. Some parameters (most of them read-only) are mandatory for IO-Link devices an can be found always on the same indices (See *Table B.8* in the *IO-Link Interface and System Specification*: https://io-link.com/share/Downloads/Package-2020/IOL-Interface-Spec_10002_V113_Jun19.pdf).

A vendor can use additional parameters and therefore more indices for their devices in order to provide additional configuration options. These vendor specific parameters can be described in an IODD. The "IODD on Module" feature of the LioN-X IO-Link Masters can read and parse this information out of an IODD and use it to provide the user viewing and editing options for vendor specific parameters without any additional knowledge about the vendor specific device features.

14.2 Web GUI functionality

All of the "IODD on Module" features are accessible via the LioN-X Web interface.

14.2.1 Port Details page

 **lumbergautomation**
A BELDEN BRAND

LioN-X Web Interface

Status Ports System User Contact

Port Details

Show details for port

☐ X1 ☒ X2 ☐ X3 ☐ X4 ☐ X5 ☐ X6 ☐ X7 ☐ X8

Port Information

Forcemode **Forcemode off**

Port X2

Type IO-Link

Dia

Port Diagnosis

No diagnosis

Pin 4 / Channel A

Function IO-Link

4 Bytes In, 4 Bytes Out

State **Operate**

Pin 2 / Channel B

Function Inactive

State **Inactive**

IO-Link Events

No events

IO-Link

Vendor ID 362

Device ID 36741114

Vendor Name BELDEN Deutschland GmbH

Vendor Text www.beldensolutions.com

Product Name 0960 IOL 381-001

Product ID: 934992002

Product Text LioN-P IO-Link (IO-Hub, 16DI)

Serial No. x42n

HW Revision V1

FW Revision V3.0.0.0

Speed COM3

Cycle time 1000

IODD

Application Name (Tag)

Name	Value
Port X1A	false
Port X1B	false
Port X2A	false
Port X2B	false
Port X3A	false
Port X3B	false

The Port Details Page shows all information about the selected port. In the left column, all port and channel specific information is displayed. If the port is configured as IO-Link and there is an IO-Link Device connected, all IO-Link information for the connected device is displayed in the right column.

IODD buttons

The row called *IODD* provides access to the "IODD on Module" features. The button *UPLOAD* will let the user upload an IODD file into the module, regardless of the original device the IODD has been designed for.

The maximum number of IODDs is limited due to storage space. If there is no more space left for new IODDs, there will be an error message. In this case, navigate to the IODD Management page to delete IODDs which are no longer used.

If there is a matching IODD for the currently connected device already stored in the system, the button *CONFIGURE* is shown in the interface. By clicking this button, the Parameter Page will open to configure the device.

Process data

For every connected IO-Link Device, raw process data for input and output direction (set of bytes) is on display.

If a matching IODD providing information about process data is already stored in the system, this data will also be displayed in a user-friendly format according to the IODD.

14.2.2 Parameters page

IODD - Device configuration

Diagnosis

Parameter	Value	Unit	Min	Max	Description
Device Status	Device is OK				Indicator for the current device condition and diagnosis state.

Identification

Parameter	Value	Unit	Min	Max	Description
Vendor Name	BELDEN Deutschland GmbH				The vendor name that is assigned to a Vendor ID.
Vendor Text	www.beldensolutions.com				Additional information about the vendor.
Product Name	0960 IOL 381-001				Complete product name.
Product ID	934992002				Vendor-specific product or type identification (e.g., item number or model number).
Product Text	LioN-P IO-Link I/O-Hub, 16DI				Additional product information for the device.
Serial Number	x42n				Unique, vendor-specific identifier of the individual device.
Hardware Revision	V1				Unique, vendor-specific identifier of the hardware revision of the individual device.
Firmware Revision	V3.0.0.0				Unique, vendor-specific identifier of the firmware revision of the individual device.
Application-specific Tag	appTag7		0	32	Possibility to mark a device with user- or application-specific information.
Function Tag	functionTag5		0	32	
Location Tag	locationTag5		0	32	

Parameter

Parameter	Value	Unit	Min	Max	Description
User Serial Number	x42n		0	16	
Module Identification ID	1		0	127	

General Device Settings

Parameter	Value	Unit	Min	Max	Description
I/O data mapping	LioN-P				
DIS-PRM-RST	enable parameter reset				

General Diagnostic Settings

Parameter	Value	Unit	Min	Max	Description
Disable peripheral diagnosis	enable diagnosis				

Input Filter

Parameter	Value	Unit	Min	Max	Description
Port X1A	off				
Port X1B	0.5ms				
Port X2A	1ms				
Port X2B	2ms				
Port X2C	2ms				

The parameters page "IODD – Device configuration" shows all parameters which are provided by the IODD of the device. That means the parameter set is variable and depends on the connected IO-Link Device.

The stored IODD reads the parameter meta data, such as names, units, min/ max values, descriptions etc. The values will be obtained directly from the connected device. For that reason it may take several seconds until the page is updated.

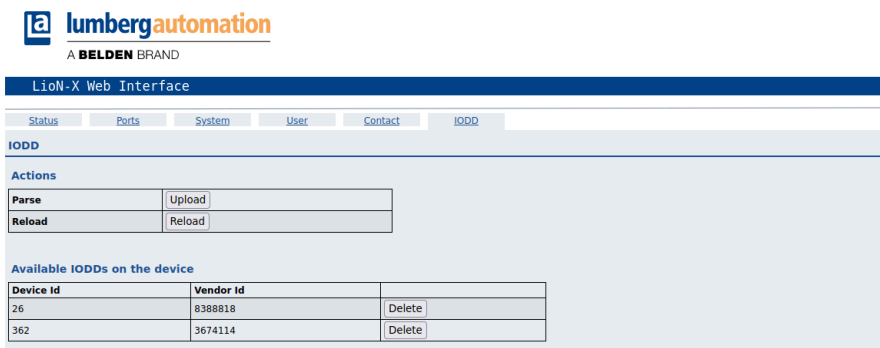
If not already saved into the browser, you will be asked for your credentials to continue. A valid user access with Web Interface group membership is needed in order to edit the device parameters. After the registration, enabled values can be changed. Disabled values cannot be changed and may be

marked as "read-only" in the IODD. All values are directly written back to the device after any change.

Limitations

- ▶ Editing parameter values will directly change them inside the connected device. No parameter server action is triggered by that.
- ▶ There is a maximum size of the IODD in order to be uploaded into the system. This depends on several values, such as file size, parameter count, nesting levels etc.

14.2.3 IODD Management page



lumbergautomation
A BELDEN BRAND

Lion-X Web Interface

Status Ports System User Contact IODD

IODD

Actions

Parse	Upload
Reload	Reload

Available IODDs on the device

Device Id	Vendor Id	
26	8388818	Delete
362	3674114	Delete

The IODD Management Page can be accessed via the System page displaying all IODDs that are currently stored in the system. All IODDs matching connected devices are marked. On the IODD Management page, you can manually delete any IODD in the system.

Standard Definitions File

IODDs are usually referencing to a Standard Definitions File. The latest Standard Definitions File is already pre-installed on the system when the device is shipped. It can also be updated manually by clicking the button "Upload Standard Definitions File".

15 Technical data

The following sections give an overview of the most important functional data needed to operate the device. For further information and detailed technical data, see the respective **Data Sheet** of your required product in the product specific download area on catalog.belden.com.

15.1 General

Protection class (Only applies if the connectors are screwed together or if protective caps are used.) ²	IP65 IP67 IP69K	
Ambient temperature (during operation and storage)	0980 XSL 3x12-121...	-40 °C .. +70 °C (-40 °F .. +158 °F)
	0980 XSL 3x13-121...	
	0980 LSL 3x11-121...	-20 °C .. +60 °C (-4 °F .. +140 °F)
	0980 LSL 3x10-121...	
Weight	LioN-X 60 mm	approx. 500 gr. (17.6 oz)
Ambient moisture	Max. 98% RH (For UL applications: Max. 80% RH)	
Housing material	Die-cast zinc	
Surface finish	Frosted nickel	
Flammability class	UL 94 (IEC 61010)	
Vibration resistance (oscillation) DIN EN 60068-2-6 (2008-11)	15 g / 5-500 Hz	
Shock resistance DIN EN 60068-2-27 (2010-02)	50 g / 11 ms +/- X,Y,Z	
Fastening torques	M4 fixing screws	1 Nm
	M4 ground connection	1 Nm
	M12 connector	0.5 Nm
Permitted cables	Ethernet cables according to IEEE 802.3, min. CAT 5 (shielded) Max. length of 100 m, not routed out of facility (= local network)	

Table 52: General information

² Not under UL investigation.

15.2 CC-Link IE Field Basic protocol

Protocol	CC-Link IE Field Basic
Update cycle	1 ms
Transmission rate	100 Mbit/s, full duplex
Transmission procedure Autonegotiation	100BASE-TX supported
Product type	0x001F IO-Link Master
Product code	0980 XSL 3912-121-007D-01F, 935700002 0980 XSL 3912-121-027D-01F, 935710001 0980 XSL 3913-121-007D-01F, 935703001 0980 XSL 3913-121-027D-01F, 935711001 0980 LSL 3411-121-0006-010, 935701005 0980 LSL 3410-121-0006-010, 935702005
Supported Ethernet protocols	ICMP ARP HTTP / HTTPS SNMP
Switch functionality	Integrated
CC-Link IE Field Basic interface Connections Autocrossing	2 M12 sockets, 4-pin, D-coded (see pin assignments) 2 M12 Hybrid male/female, 8-pin supported
Electrically isolated Ethernet ports -> FE	2000 V DC

Table 53: CC-Link IE Field Basic protocol

15.3 Power supply of the module electronics/sensors

Port X03, X04	M12-L-coded Power, connector/socket, 5-pole Pin 1 / Pin 3		
Nominal voltage U_S	24 V DC (SELV/PELV)		
Current U_S	Max. 16 A		
Voltage range	21 .. 30 V DC		
Power consumption of module electronics	Typically 160 mA (+/-20 % at U_S nominal voltage)		
Power supply interruption	Max. 10 ms		
Voltage ripple U_S	Max. 5 %		
Current consumption sensor system (L+ / Pin 1)	0980 XSL 3912-121...	Port X1 .. X8 (Pin 1)	max. 4 A per port (at $T_{\text{ambient}} = 30^\circ \text{C}$)
	0980 XSL 3913-121...		
	0980 LSL 3x11-121...	Port X1 .. X8 (Pin 1)	max. 2 A per port (at $T_{\text{ambient}} = 30^\circ \text{C}$)
	0980 LSL 3x10-121...	Port X1 .. X4 (L+ / Pin 1)	max. 2 A per port (at $T_{\text{ambient}} = 30^\circ \text{C}$)
		Port X5 .. X8 (Pin 1)	max. 0.7 A in total for ports X5 .. X8
Voltage level of the sensor power supply	Min. ($U_S - 1.5 \text{ V}$)		
Short circuit/overload protection of sensor supply	Yes, per port		
Reverse polarity protection	Yes		
Operational indicator (U_S)	LED green:	18 V (+/- 1 V) < U_S	
	LED red:	$U_S < 18 \text{ V (+/- 1 V)}$	

Table 54: Information on the power supply of the module electronics/sensors

15.4 Power supply of the actuators

15.4.1 IO-Link Class A devices (U_L)

Nominal voltage U_L	24 V DC (SELV/PELV)
Voltage range	18 .. 30 V DC
Current U_L	Max. 16 A
Voltage ripple U_L	Max. 5 %
Reverse polarity protection	Yes
Operational indicator (U_L)	LED green: 18 V (+/- 1 V) < U_L LED red: U_L < 18 V (+/- 1 V) or U_L > 30 V (+/- 1 V) * if "Report U_L supply voltage fault" is enabled.
Port X03, X04	M12_L-coded Power, connector/socket, 5-pole Pin 2 / Pin 4

Table 55: Information on the power supply of the actuators

15.4.2 IO-Link Class A/B devices (U_{AUX})

Nominal voltage U_{AUX}	24 V DC (SELV/PELV)
Voltage range	18 .. 30 V DC
Current U_{AUX}	Max. 16 A
Voltage ripple U_{AUX}	Max. 5 %
Reverse polarity protection	Yes
Electric isolation $U_S \leftrightarrow U_{AUX}$	500 V
Operational indicator (U_{AUX})	LED green: 18 V (+/- 1 V) < U_{AUX} LED red: U_{AUX} < 18 V (+/- 1 V) or U_{AUX} > 30 V (+/- 1 V) * if "Report U_{AUX} supply voltage fault" is enabled.
Port X03, X04	M12_L-coded Power, connector/socket, 5-pole Pin 2 / Pin 4

Table 56: Information on the power supply of the actuators

15.5 I/O ports Channel A (Pin 4)

0980 XSL 3912-121...	Port X1 .. X8	Class A	IOL, DI, DO	M12 socket, 5-pin, Pin 4
0980 LSL 3x11-121...	Port X1 .. X8	Class A	IOL, DI, DO	
0980 LSL 3x10-121...	Port X1 .. X4	Class A	IOL, DI, DO	
	Port X5 .. X8	—	—, DI, —	
0980 XSL 3913-121...	Port X1 .. X4	Class A	IOL, DI, DO	
	Port X5 .. X8	Class B	IOL, DI, DO	

Table 57: IO-Link Master ports: Functional overview for Ch. A (Pin 4)

15.5.1 Configured as digital input, Ch. A (Pin 4)

Input connection	0980 XSL 3912-121...		Type 1 as per IEC 61131-2
	0980 LSL 3x11-121...		
	0980 LSL 3x10-121...		
	0980 XSL 3913-121...		
Nominal input voltage	24 V DC		
Input current	Typically 3 mA		
Channel type	Normally open, p-switching		
Number of digital inputs	0980 XSL 3912-121...	X1 .. X8	8
	0980 LSL 3x11-121...		
	0980 LSL 3x10-121...		
	0980 XSL 3913-121...		
Status indicator	yellow LED		
Diagnostic indicator	red LED per channel		

Table 58: I/O ports Ch. A (Pin 4) configured as digital inputs

15.5.2 Configured as digital output, Ch. A (Pin 4)

i Attention: For variants 0980 XSL 3912-121-007D-00F, 0980 XSL 3912-121-007D-01F and 0980 XSL 3912-121-027D-01F, the digital outputs of Channel A are **supplied by the U_L power** when parameterized to "High-Side Switch" mode.

i Attention: For variants 0980 XSL 3913-121-007D-01F and 0980 XSL 3913-121-027D-01F, the digital outputs are supplied as follows:

► "X1 .. X8 / Channel A" are supplied by the U_S power

i Attention: For variants 0980 LSL 3010-121-0006-001 and 0980 LSL 3011-121-0006-001 , the digital outputs of Channel A are **supplied by the U_S power**.

Output type	normally open, p-switching (parameterized to "High-Side Switch" mode)	
Nominal output voltage per channel		
Signal status "1"	min. (U _S -1 V) or min. (U _L -1 V) depending on the device variant	
Signal status "0"		
Max. output current per device	0980 XSL 3912-121...	9 A (power supplied via U _L)
	0980 XSL 3913-121...	9 A (power supplied via U _S)
	0980 LSL 3x11-121...	4 A (power supplied via U _S)
	0980 LSL 3x10-121...	2 A (power supplied via U _S)
Max. output current per channel ³	0980 XSL 3912-121... (X1 .. X8)	2 A (power supplied via U _S)
	0980 XSL 3913-121... (X1 .. X8)	2 A (power supplied via U _S)
	0980 LSL 3x11-121... (X1 .. X8)	0.5 A (power supplied via U _S)
	0980 LSL 3x10-121... (X1 .. X4)	0.25 A for UL applications

³ Max. 2.0 A per channel; for every port pair X1/X2, X3/X4, X5/X6, X7/X8 max. 6.5 A (for **UL applications** max. 5.0 A); for the whole port group X1 .. X8 max. 9.0 A in total (with derating).

Short-circuit/overload protected	yes/yes	
Behavior in case of short circuit or overload	deactivation with automatic power-on (parameterized)	
Number of digital outputs	0980 XSL 3912-121... (X1 .. X8)	8
	0980 XSL 3913-121... (X1 .. X8)	
	0980 LSL 3x11-121... (X1 .. X8)	
	0980 LSL 3x10-121... (X1 .. X4)	4
Status indicator	yellow LED per output	
Diagnostic indicator	red LED per channel	

Table 59: I/O ports Ch. A (Pin 4) configured as digital outputs

15.5.3 Configured as IO-Link port in COM mode, Ch. A

IO-Link Master specification	v1.1.3 ready, IEC 61131-9	
Communication rates	4.8 kbaud (COM 1) 38.4 kbaud (COM 2) 230.4 kbaud (COM 3)	
Line lengths in the IO-Link Device	max. 20 m	
Number of IO-Link ports	0980 XSL 3912-121... (X1 .. X8)	8
	0980 XSL 3913-121... (X1 .. X8)	8
	0980 LSL 3x11-121... (X1 .. X8)	8
	0980 LSL 3x10-121... (X1 .. X4)	4
Min. IO-Link cycle time	400 µs	

Table 60: Configured as IO-Link port in COM mode

15.6 I/O ports Channel B (Pin 2)

0980 XSL 3912-121...	Port X1 .. X8	Class A	DI, DO	M12 socket, 5-pin, Pin 2
0980 LSL 3x11-121...	Port X1 .. X8	Class A	DI	
0980 LSL 3x10-121...	Port X1 .. X4	Class A	DI	
	Port X5 .. X8	–	DI	
0980 XSL 3913-121...	Port X1 .. X4	Class A	DI, DO	
	Port X5 .. X8	Class B	DO, U _{AUX}	

Table 61: IO-Link Master ports: Functional overview for Ch. B (Pin 2)

15.6.1 Configured as a digital input, Ch. B (Pin 2)

Input connection	0980 XSL 3912-121...		Type 1 as per IEC 61131-2
	0980 XSL 3913-121...		
	0980 LSL 3x11-121...		
	0980 LSL 3x10-121...		
Nominal input voltage	24 V DC		
Input current	Typically 3 mA		
Channel type	Normally open, p-switching		
Number of digital inputs	0980 XSL 3912-121...	X1 .. X8	8
	0980 XSL 3913-121...	X1 .. X4	4
	0980 LSL 3x11-121...	X1 .. X8	8
	0980 LSL 3x10-121...	X1 .. X8	8
Status indicator	white LED		
Diagnostic indicator	red LED per channel		

Table 62: I/O ports Ch. B (Pin 2) configured as digital inputs

15.6.2 Configured as a digital output, Ch. B (Pin 2)



Attention: For variants 0980 XSL 3912-121-007D-00F, 0980 XSL 3912-121-007D-01F and 0980 XSL 3912-121-027D-01F, the digital outputs of Channel B are **supplied by the U_L power**.



Attention: For variants 0980 XSL 3913-121-007D-01F and 0980 XSL 3913-121-027D-01F, the digital outputs are supplied as follows:

- ▶ "X1 .. X4 / Channel B" are supplied by the U_S power
- ▶ "X5 .. X8 / Channel B" are supplied by the U_{AUX} power



Attention: For variants 0980 LSL 3010-121-0006-001 and 0980 LSL 3011-121-0006-001, the digital outputs of Channel B are **supplied by the U_S power**.

Output type	normally open, p-switching	
Nominal output voltage per channel Signal status "1" Signal status "0"	min. ($U_S - 1\text{ V}$) or min. ($U_L - 1\text{ V}$) or min. ($U_{AUX} - 1\text{ V}$) depending on the device variant max. 2 V	
Max. output current per device	0980 XSL 3912-121...	9 A (power supplied via U_L)
	0980 XSL 3913-121...	8 A (power supplied via U_{AUX})
	0980 LSL 3x11-121...	4 A (power supplied via U_S)
	0980 LSL 3x10-121...	2 A (power supplied via U_S)
Max. output current per channel 4,5	0980 XSL 3912-121...	2 A (power supplied via U_S)
	0980 XSL 3913-121...	X1 .. X4: 2 A (power supplied via U_S)
		X5 .. X8: 2 A (power supplied via U_{AUX})
	0980 LSL 3x11-121...	0 A (no outputs on Ch. B)
	0980 LSL 3x10-121...	0 A (no outputs on Ch. B)
Short-circuit/overload protected	yes/yes	
Behavior in case of short circuit or overload	deactivation with automatic power-on (parameterized)	
Number of digital outputs	0980 XSL 3912-121...	8
	0980 XSL 3913-121...	8
	0980 LSL 3x11-121...	–
	0980 LSL 3x10-121...	–
Status indicator	white LED per output	

4 For Class A devices: Max. 2.0 A per channel; for every port pair X1/X2, X3/X4, X5/X6, X7/X8 max. 6.5 A (for **UL applications** max. 5.0 A); for the whole port group X1 .. X8 max. 9.0 A in total (with derating).

5 For Class A/B devices: Max. 2.0 A per channel; for every port pair X1/X2, X3/X4, X5/X6, X7/X8 max. 6.5 A (for **UL applications** max. 5.0 A); for port group X5/X6/X7/X8 max. 5.0 A from U_{AUX} ; for the whole port group X1 .. X8 max. 9.0 A in total (with derating).

Diagnostic indicator	red LED per channel
----------------------	---------------------

Table 63: I/O ports Ch. B (Pin 2) configured as digital outputs

15.7 LEDs

LED	Color	Description
U _L /U _{AUX}	Green	Auxiliary sensor/actuator voltage OK $18\text{ V (+/- 1 V)} < U_L/U_{AUX} < 30\text{ V (+/- 1 V)}$
	Red*	Auxiliary sensor/actuator voltage LOW $U_L/U_{AUX} < 18\text{ V (+/- 1 V)}$ or $U_L/U_{AUX} > 30\text{ V (+/- 1 V)}$ * if "Report U _L /U _{AUX} supply voltage fault" is enabled.
	OFF	None of the above conditions.
U _S	Green	System/sensor voltage OK $18\text{ V (+/- 1 V)} < U_S < 30\text{ V (+/- 1 V)}$
	Red	System/sensor voltage LOW $U_S < 18\text{ V (+/- 1 V)}$ or $U_S > 30\text{ V (+/- 1 V)}$
	Red flashing	Device performs a factory reset (position of rotary encoding switches: 9-7-9)
	OFF	None of the above conditions.
X1 .. X8 A	Green	IO-Link COM Mode: IO-Link communication exists.
	Green flashing	IO-Link COM Mode: No IO-Link communication.
	Yellow	Standard-I/O Mode: Status of digital input or output on C/Q (pin 4) line "on".
	OFF	None of the above conditions
X1 .. X8 B	White	Status of digital input or digital output on pin 2 line "on".
	Red	Short circuit on pin 4 and pin 2 line. / All modes: Overload or short circuit on L+ (pin 1) line / communication error
	OFF	None of the above conditions.
P1 Lnk/Act P2 Lnk/Act	Green	Ethernet connection to another subscriber exists. Link detected.
	Yellow flashing	Data exchange with another subscriber.
	OFF	No connection to another subscriber. No link, no data exchange.

LED	Color	Description
BF	Red	Bus fault. No configuration, no or slow physical connection.
	Red flashing at 2 Hz	Link exists but no communication link to the CC-Link IE controller.
	OFF	CC-Link IE controller has established an active connection to the device.
DIA	Red	CC-Link IE module diagnostic alarm active.
	Red flashing at 1 Hz	Watchdog time-out; fail safe mode is active.
	Red flashing at 2 Hz, 3 sec	DCP signal service is initiated via the bus.
	Red double flash	Firmware update
	OFF	None of the above conditions.
MS	Green	Device is ready for operation.
	Green flashing	Device is ready but not configured yet.
	Red	Serious error that cannot be resolved.
	Red flashing	Minor error that can be resolved Example: An incorrect or contradictory configuration is classified as a minor error.
	Flashing alternately:	The device is performing a self-test.
	Red Green	
	OFF	The device is switched off.

LED	Color		Description
NS	Green		Connected: The device has at least one connection.
	Green flashing		No connection: The device has no connection. IP address exists.
	Red		Duplicate IP address: The device has detected that the assigned IP address is already being used by another device.
	Red flashing		Connection has exceeded time limit or connection interrupted.
	Flashing alternately:		The device is performing a self-test.
	Red	Green	
	OFF		The device is switched off or has not been assigned an IP address.

Table 64: Information on the LED colors

15.8 Data transfer times

The following tables give an overview of the internal data transfer times of the Lion-X IO-Link Master with a connected IO-Link Device as digital I/O extension (Belden article 0960 IOL 380-021 16DIO Hub with a minimum cycle time of 1 ms).

There are three measured data direction values for each use case:

- ▶ **PLC to DO:** Transfer of a changed PLC output data to IO-Link Device digital output.
- ▶ **DI to PLC:** Transfer of a changed digital input signal on IO-Link Device to PLC.
- ▶ **Round-trip time (RTT):** Transfer of a changed PLC output data to IO-Link Device digital output. The digital output is connected to an IO-Link Device digital input. Transfer of the changed digital input signal on IO-Link Device to PLC. $RTT = [PLC \text{ to } DO] + [DI \text{ to } PLC]$.

The measured values are taken from the ethernet data transmission line. The values are therefore without PLC processing times and PLC cycle time.

The configurable digital input filter value on 0960 IOL 380-021 was set to "off" (0 ms).

For calculation of user specific data transfer and round-trip times of possible input filters, PLC processing and cycles times must be taken into calculation.

The measured values are valid for a maximum of 48 bytes of IO-Link data for the IO-Link Master in each direction (Input/Output).

Use case 1:

IO-Link Master configuration with enabled Web interface and *disabled* IIoT protocols

Data direction	Data transfer time in ms		
	Minimum	Average	Maximum
PLC to DO	3.7	6.0	7.7
DI to PLC	1.1	3.0	4.3
RTT	6.1	8.9	11.1

Use case 2:

IO-Link Master configuration with enabled Web interface and *enabled* IIoT protocols

Data direction	Data transfer time in ms		
	Minimum	Average	Maximum
PLC to DO	7.7	10.0	13.4
DI to PLC	3.3	4.4	5.6
RTT	12.1	14.3	17.0

16 Accessories

In order to get access to various types of accessories, please visit our Web page:

<https://www.belden.com>